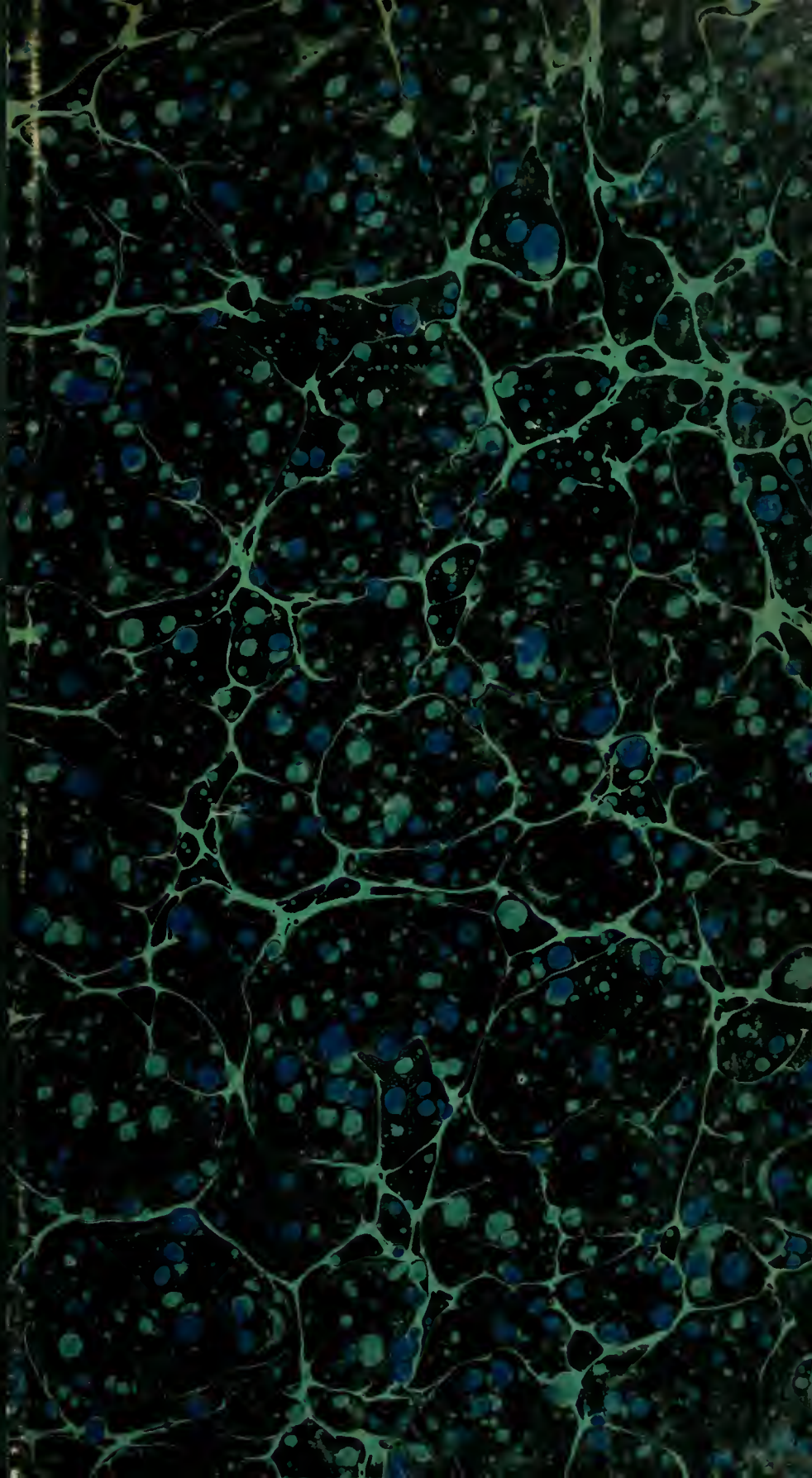


CJ  
319  
S72c

D  
0  
0  
0  
0  
6  
8  
4  
4  
7  
4  
0

UNIVERSITY OF SOUTHERN REGIONAL LIBRARY FACILITY





THE LIBRARY  
OF  
THE UNIVERSITY  
OF CALIFORNIA  
LOS ANGELES















CATALOGUE  
OF  
THE COLLECTION OF  
**GREEK COINS**

In Gold, Silver and Electrum, 719

AND

A FEW ROMAN, BYZANTINE, ENGLISH AND FOREIGN PIECES IN GOLD,

THE PROPERTY OF THE RIGHT HONBLE.

**THE EARL OF ASHBURNHAM,**

FROM THE

THOMAS, NORTHWICK, ADDINGTON, AND WIGAN

COLLECTIONS, AND OTHER SOURCES.

---

WHICH WILL BE SOLD BY AUCTION,

BY MESSRS.

**SOTHEBY, WILKINSON & HODGE,**

*Auctioneers of Literary Property & Works illustrative of the Fine Arts,*

AT THEIR HOUSE, No. 13, WELLINGTON STREET, STRAND, W.C.

On MONDAY, 6th day of MAY, 1895, and following Day,

AT ONE O'CLOCK PRECISELY.

---

MAY BE VIEWED TWO DAYS PRIOR. CATALOGUES MAY BE HAD.

---

DRYDEN PRESS: J. DAVY & SONS, 137, LONG ACRE, W.C.

## CONDITIONS OF SALE.

---

- I. The highest bidder to be the buyer ; and if any dispute arise between bidders, the lot so disputed shall be immediately put up again, provided the auctioneer cannot decide the said dispute.
- II. No person to advance less than 1s. ; above five pounds, 2s. 6d., and so on in proportion.
- III. In the case of lots upon which there is a reserve, the auctioneer shall have the right to bid on behalf of the seller.
- IV. The purchasers to give in their names and places of abode, and to pay down 5s. in the pound, if required, in part payment of the purchase-money ; in default of which the lot or lots purchased to be immediately put up again and re-sold.
- V. The sale of any lot is not to be set aside on account of any error in the enumeration of the numbers stated, or errors of description.
- VI. The lots to be taken away, at the buyer's expense, immediately after the conclusion of the sale ; in default of which Messrs. SOTHEBY, WILKINSON & HODGE will not hold themselves responsible if lost, stolen, damaged, or otherwise destroyed, but they will be left at the sole risk of the purchaser. If, at the expiration of Two Days after the conclusion of the sale, the lots are not cleared or paid for, they will then be catalogued for immediate sale, and the expense, the same as if re-sold, will be added to the amount at which they were bought. Messrs. SOTHEBY, WILKINSON & HODGE will have the option of re-selling the lots uncleared, either by public or private sale, without any notice being given to the defaulter.
- VII. Upon failure of complying with the above conditions, the money required and deposited in part of payment shall be forfeited, *and if any loss is sustained in the re-selling of such lots as are not cleared or paid for, all charges on such re-sale shall be made good by the defaulters at this sale.*

---

*Gentlemen, who cannot attend this Sale, may have their Commissions faithfully executed by their humble Servants,*

SOTHEBY, WILKINSON & HODGE,

13, Wellington Street, Strand, London.



Call  
311  
570.e

CATALOGUE  
OF THE COLLECTION OF  
**GREEK COINS**

And a few English and Foreign Pieces,

THE PROPERTY OF THE RIGHT HONBLE.

**THE EARL OF ASHBURNHAM.**

FIRST DAY'S SALE.

**HISPANIA AND GALLIA.**

LOT

*O'Hagan*

1 **Hispania.** R Drachm. Male head with curled hair to right, in front two dolphins and behind head another.

R Celtiberian legend, Cavalier galloping to right, holding palm branch, wt. 63 grs.

**Gallia.** R Tetradrachm. Debased type of Philip II of Macedon, head of Zeus to right.

R DY. [O?] VY., Figure on horse-back, under raised forepaw of horse Π., wt. 196.5 grs., fine. 2

*Peasle*

2 **Hispano-Carthaginian.** Circa B.C. 234-210? R Tetradrachm of thick fabric. Head of Zeus laureate to right, border of dots.

R Elephant trumpeting, and advancing to right, above spear head in exergue K. wt. 259 grs., fine and very rare. Compare MM. Imhoof-Blumer and Keller "Tier-und Pflanzen Bilder" (Pl. IV, 2). 1

Plate I.

B

15

2 2

2.17 -

## AMPANIA.

- 2 4 . 3 **Cales.** *Circa* B.C. 334.  $\mathcal{R}$  Didrachm. Head of Pallas in crested Corinthian helmet to right decorated with coiled serpent, behind neck a thunderbolt.
- $\mathcal{R}$  **CALENO.** (in exergue), Victory in biga to right, *wt.* 114 *grs.*, *very fine* 1
- Plate I.*
- 3 1 . 4 **Nuceria Alifaterna.** B.C. 308.  $\mathcal{R}$  Didrachm. Oscan inscription, *Nukrinum Alafaternum*, Youthful male head with ram's horn to left.
- $\mathcal{R}$  one of the Dioskuri standing beside his horse, *wt.* 111.3 *grs.*, *very fine* 1
- 2 2 . 5 **Teanum Sidicinum.** B.C. 300-268.  $\mathcal{R}$  Didrachm. Head of Young Herakles to right, in lion's skin, not covering back of head; the paws knotted under chin, behind club.
- $\mathcal{R}$  Oscan inscription (in exergue) Nike in triga, horses in high action, to right, *wt.* 111.2 *grs.*, *very fine* 1

Rollins

Seltman

—do—

## CALABRIA.

- 59 . 6 **Tarentum,** B.C. 400-330.  $\mathcal{A}$  Stater. **TAPA.** Head of Demeter or Hera? to right, wearing stephane decorated with palmettes; veil on back of head, earring and necklace; in front of head dolphin; beneath neck **KOW.**
- $\mathcal{R}$  [ $\Delta$ IO $\Sigma$ ]KOPOI., the Dioskuri riding to left, the further horse in advance, the near figure carries a palm branch to which is attached a wreath and fillet, in exergue  $\Sigma$ A., *wt.* 132.1, *very fine and very rare* (Carelli, CIII, 12). 1

*Plate I.*

- 94 . 7 **Tarentum.** B.C. 400-330.  $\mathcal{A}$  Stater. **TAPA.** Head of Demeter or Hera? wearing stephane and veil, &c. as on the preceding piece, but from a different die, dolphin in front, below the neck  $\Sigma$ I.
- $\mathcal{R}$  Young horseman to right, naked, aiming javelin, and carrying circular shield and two spare javelins; in front of horse's head a thunderbolt and below  $\mathcal{A}\Pi.$ , *wt.* 131.1 *grs.*, *very fine style and condition, very rare* (Carelli, CIII, 10). 1

*Plate I.*

Groenev

—do—

Collin

8 **Tarentum.** B.C. 400-300.  $\mathcal{A}$  Stater. Head of Demeter or Hera? wearing stephane, veil, &c., from a different die to the preceding pieces, the veil does not descend below truncation, and without dolphin in front of head.

℞ Taras as a child holding out his arms to his father Poseidon, enthroned before him; in field  $\Gamma$ . and a star, *wt.* 132 *grs.*, *very fine and excessively rare* (Carelli CIII, 7). 1

Plate I.

Spink

9 **Tarentum.** B.C. 212-209.  $\mathcal{A}$  Drachm. Horseman galloping to right, about to hurl javelin; behind  $\Phi$  I., below horse  $\Phi$  I A I A P X O S.

℞ [T] A P A C C., Taras on dolphin to right, about to hurl a trident, *wt.* 56 *grs.*, *very fine.* 1

### LUCANIA.

Collin

10 **Heraclea.** B.C. 380-300.  $\mathcal{A}$  Didrachm. Head of Pallas, her hair bound with olive wreath, waved in front and turned up at back; displayed upon  $\mathcal{A}$ gis with border of serpents.

℞ ΗΡΑΚΛΕΙΩΝ., Herakles nude, seated on rock, covered with lion's skin, holding vase, at his feet club, *wt.* 121 *grs.*, *fine and rare* 1

Plate I.

Groncy

11 **Heraclea.** B.C. 380-300.  $\mathcal{A}$  Didrachm.  $\Gamma$  ΗΡΑΚΛΗΙΩΝ., Head of Pallas in crested Corinthian helmet to right, helmet ornamented with Seylla, behind neck K.

℞  $\Gamma$  ΗΡΑΚΛΗΙΩΝ., Herakles, naked, standing facing holding club downwards in right hand, and strung bow and one arrow in left hand, over left arm lion's skin; to left AΘA., in field a one-handed vase, *wt.* 124 *grs.*, *very fine and scarce in this state.* 1

Collin

12 **Metapontum.** Period III. Finest Art. Circa B.C. 400-350,  $\mathcal{A}$  Stater  $\Gamma$  O M O N O I A., Head of Homonia to left, hair waved and bound with narrow diadem.

℞ M E T A., Ear of barley with leaf to left, *wt.* 122.2 *grs.*, *fine, a scarce type.* 1

Plate I.

Groncy

13 **Poseidonia.** Period-II. Circa B.C. 480-400,  $\mathcal{A}$  Stater. Π Ο Σ Ε Ι Δ Α Ν., Nude figure but for chlamys which hangs loosely over shoulders, of Poseidon, to right, wielding trident, in field a dolphin, border of dots.

℞ Π Ο Σ Ε Ι Δ Α Ν Ι., Bull to left; in exergue dolphin, *wt.* 126 *grs.*, *very fine.* 1

Plate I.

91. 3. -  
 2 5 14 **Thurium.** B.C. 420-390.  $\mathcal{A}$  Stater. Head of Athena in helmet bound with olive. *New Smith*  
 $\mathcal{R}$  ΘΟΥΡΙΩΝ., Bull butting to right, beneath E., in exergue a fish, *wt.* 119 gr., *very fine.* 1
- 6 7 6 15 **Thurium.** B.C. 390-350,  $\mathcal{A}$  Distater. Head of Pallas in crested Athenian helmet adorned with Scylla in front  $\Phi$ . *Rollin*  
 $\mathcal{R}$  ΘΟΥΡΙΩΝ., Bull butting to right, *wt.* 245.1 grs., *fine.* 1
- 30 10 16 **Thurium.** B.C. 390-350.  $\mathcal{A}$  Distater. Head of Pallas to right, wearing crested Athenian helmet, adorned with Scylla, dogs' heads springing from her waist, the neck piece is decorated with a griffin. *Spink*  
 $\mathcal{R}$  ΘΟΥΡΙΩΝ., Bull butting to right, on buttoek the monogram VE.; in exergue a fish, *wt.* 243.1 gr., *very fine.* 1  
 \* \* Northwiek, No. 114.  
 Plate I.
- 8 17 **Velia.** B.C. 390-350.  $\mathcal{A}$  Didrachm. Head of Athena wearing crested Athenian helmet, ornamented with a griffin. *Money*  
 $\mathcal{R}$  [ΥΕΛ]ΗΤΩΝ. (above), Lion seizing stag; dotted exergual line, *wt.* 119.4 grs., *very fine, and of fine style, apparently an unpublished variety, compare Carelli CXLII, 76, for R.* 1  
 Plate I.
- 5 10 18 **Velia.** Period IV, B.C. 400-268.  $\mathcal{A}$  Didrachm. Head of Pallas, in crested Corinthian helmet, wearing earring and necklace, the helmet is adorned with representation of fast Quadriga driven by Nike; on band, beneath crest, the signature of the artist, ΦΙΛΙΣΤΙΩΝ., on the neckpiece, figure of a horseman. *Rollin*  
 $\mathcal{R}$  ΥΕΛΗΤΩΝ. (in exergue), Lion to left, on bones of carcase, devouring prey, above Nike flying, to right traces of  $\Phi$  I., *wt.* 106.5 grs., *very fine.* 1  
 Plate I.
- 14 19 **Velia.** B.C. 400-268.  $\mathcal{R}$  Didrachm. Head of Athena to left, wearing crested Athenian helmet decorated with griffin, &c., above A. *O'Haga*  
 $\mathcal{R}$  [ΥΕΛΗ]ΤΩΝ., Lion attacking stag, *wt.* 114 grs., *fine.* 1

## BRUTTIUM.

- 42 20 **Bruttii.** B.C. 282-203.  $\mathcal{A}$  Drachm (Attic). Head of Poseidon, wearing plain diadem to left, behind trident, and beneath a dolphin; border of dots. *Rollin*  
 $\mathcal{R}$  ΒΡΕΤΤΙΩΝ. Amphitrite, veiled, seated on sea horse; before her stands Eros drawing a bow, in field, to right, a star, *wt.* 65.2 grs., *in extremely fine state, rare.* 1  
 Plate I.

- Rollin* 21 **Caulonia.** B.C. 550-480.  $\mathcal{A}$  Stater.  $\text{KAY}\Lambda$ ., Apollo, nude, holding in raised right hand a branch, and on his outstretched left arm is a small running figure carrying two branches; in front a stag looking back. 3 5
- $\mathcal{R}$  Same type, incuse, with exception of the small figure which is in relief, and the legend is not shewn, *wt.* 121 *grs.*, *very fine* 1
- Plate I.*
- Money* 22 **Croton.** B.C. 480-420.  $\mathcal{A}$  Stater. Eagle standing looking back in pediment of a temple, in front an antelope's skull. 2 4
- $\mathcal{R}$   $\varphi$ PO., Tripod, to right spray of olive, *wt.* 123.5 *gr.*, *fine.* 1
- \* \* \* *B. M. Cat.*, page 350, no. 70.
- Ready* 23 **Croton.** Before B.C. 420.  $\mathcal{A}$  Stater.  $\text{O}\Sigma\text{K}\Sigma\text{M}\text{TAM}$ ., Nude Figure of Herakles seated on rock covered with lion's skin, he supports with left hand his club, and in his right hand holds a filleted branch, before him is a flaming altar, and behind him, to right, bow and quiver, in exergue two fish. 30
- $\mathcal{R}$   $\varphi$ POT., Tripod, grain of corn to left, and  $\text{E}$ . in exergue, *wt.* 124 *grs.*, *in very fine condition, of the highest rarity, and apparently unpublished* 1
- Plate I.*
- Money* 24 **Croton.** B.C. 420-390.  $\mathcal{A}$  Stater. Head of Hera Lakinia, nearly facing, wearing stephanos, to right  $\text{B}$ . 22
- $\mathcal{R}$   $\text{K}\rho\text{O}\tau\text{O}\nu\text{I}\tau\alpha\text{C}$ ., Herakles seated on rock covered with lion's skin, holding wine cup and club, *wt.* 120 *grs.*, *very fine.* 1
- Plate I.*
- Spink* 25 **Rhegium.** B.C. 415-387.  $\mathcal{A}$  Tetradrachm.  $\text{P}\eta\text{G}\text{I}\text{N}\text{O}\text{N}$ ., Laureate head of Apollo to right; behind spray of olive. 22 15
- $\mathcal{R}$  Lion's scalp facing, *wt.* 265 *grs.*, *very fine.* 1
- Plate I.*
- Money* 26 **Terina.** B.C. 440-400.  $\mathcal{A}$  Stater. Head of the nymph Terina, of finest style, to right, wearing ampyx ornamented with honeysuckle and lotus, behind neck  $\phi$ ., the whole within wreath of olive. 10 10
- $\mathcal{R}$  Nike, winged, seated left on square cippus, one side of which is decorated with a wreath; she holds in her left hand caduceus, and supports with right hand upon her right knee a hydria, into which flows a stream of water from a fountain in form of a lion's head, fixed into a stone wall; in the basin of the fountain is a swan swimming left, *wt.* 117.1 *gr.* 1
- \* \* \* *Carelli*, CLXXVIII, 26.
- Plate I.*

7. 3. 6  
15 10 · 27 **Terina.** B.C. 440-400.  $\mathcal{R}$  Stater. **TEPINAION**, Head of the Nymph Terina to right, hair bound with sphenone.

$\mathcal{R}$  Winged Nike seated on square cippus, with small bird perched on her forefinger, *wt.* 120·2 *grs.*, *very fine.* 1

*Plate I.*

2 8 · 28 **Terina.** B.C. 400-388.  $\mathcal{R}$  Stater. **TEPINAION**, Head of the Nymph Terina, richly ornate, with curled hair, triple earring and necklace.

$\mathcal{R}$  Winged Nike seated on square cippus holding small bird, as on preceding piece, *wt.* 115 *grs.*, *fine.* 1

### SICILY.

1 10 · 29 **Agrigentum.** B.C. 472-417.  $\mathcal{R}$  Tetradrachm. **AKRAC-ANTOZ**, Eagle standing left, on capital of column.

$\mathcal{R}$  Crab; below rosebud, with double volute, *wt.* 269 *grs.*, *very fine* 1

260 · 30 **Agrigentum.** B.C. 415-406.  $\mathcal{R}$  Tetradrachm, **AKPAΓ**, Two Eagles standing on supine hare; the further, with spread wings, is about to tear the prey; the nearer, with closed wings, raising its head and screaming, the whole within dotted border.

$\mathcal{R}$  **AKPAΓA[NNTIN]ON**, Crab, and beneath Scylla, with flowing hair, and dogs springing from her waist, the right hand raised, *wt.* 268 *grs.*, *a magnificent piece, in very fine state, and of considerable rarity.* 1

*Plate I.*

61 · 31 **Agrigentum.** B.C. 415-406.  $\mathcal{R}$  Tetradrachm. **AKPAΓANTINON**, Eagle with wings spread, standing to left on supine hare and about to devour it, supporting the hare a rock, on which, a conch and scallop shell.

$\mathcal{R}$  Crab and broad sea fish with open mouth, on either side of crab an scallop shell and conch, *wt.* 270 *grs.*, *very fine and rare in this condition.* 1

*Plate I.*

24 10 · 32 **Camarina.** B.C. 461-405.  $\mathcal{R}$  Tetradrachm. Head of Herakles, slightly whiskered, wearing lion's skin to left, in front a bow.

$\mathcal{R}$  **KAMAPINA.** (in exergue), Quadriga driven to right by Pallas, above, flying Nike about to crown charioteer, in exergue, dividing the legend two amphoræ, *wt.* 263 *grs.*, *very fine and rare.* 1

\* \* Northwick 251.

*Plate I.*



Rollin

33 **Catana.** Period of Archaic art before B.C. 476. AR Tetradrachm. Man-headed bull, with one knee bent, to right, on his back Scilen kneeling right; in exergue pistrinx.

℞ **KATANAION.**, Catana as Nike advancing left wearing long chiton, &c., and carrying fillets in either hand, *wt. 265 grs., very fine and very rare.* 1

\* \* Northwick 264.

Plate II.

Hagan

34 **Catana** (under the name  $\text{\AA}$ etna). B.C. 476-461. AR Litra or Obol. Head of Scilen wearing wreath of ivy.

℞ **AI-TN.**, Winged thunderbolt, *wt. 9.9 grs., fine and rare.* 1

Grouley

35 **Catana** (after the Restoration). B.C. 461-415. AR Tetradrachm. **KATANAION.**, Laureate head of Apollo to right, the hair at back waved and turned up under the tie of wreath.

℞ Quadriga of walking horses to right, *wt. 264 grs., very fine.* 1

Plate II.

Ready

36 **Catana.** B.C. 461-415. AR Tetradrachm. **KATANAION.**, Head of Apollo similar to last, but from a different die, the legend is differently disposed and the lettering larger.

℞ Quadriga of walking horses to right, *wt. 268.5 grs., very fine.* 1

Rollin

37 **Catana.** B.C. 465-403. AR Drachm. **AMENANOΣ.**, Head of young river-god to left, with short horn and plain diadem; around, two river fish and a cray-fish.

℞ **KATANAIΩ[N].** (in exergue) Fast Quadriga to right, the rein of furthest horse hangs loose, above Nike flying left, crowning charioteer, *wt. 66.5 grs., a very pleasing coin in fine condition.* 1

\* \* From the cabinets of Prince Torremuzza and Lord Northwick (265).

Plate II.

do -

38 **Heraclea-Minoa.** B.C. 409-241. AR Tetradrachm. Head of Persephone, copied from the coins of Syracuse, wearing necklace and earring, and crowned with corn leaves; around, four dolphins.

℞ Quadriga to right, horses galloping, the charioteer crowned by flying Nike, in exergue Punic legend (*B. M. Catalogue, Sicily, p. 251, No. 6*), *wt. 264 grs., very fine and scarce.* 1

Ready.

39 **Himera** (under Theron and Thrasydaeus). B.C. 481-467. AR Didrachm. **HIMERA.**, Cock to left.

℞ Crab, *wt. 134.2 grs., very fine and scarce.* 1

Plate II.

- 1 1 · 40 **Leontini.** Circa B.C. 500-466. *AR* Tetradrachm. Quadriga going slowly to right, above Nike crowning horses.  
*R* ΛΕΟ-Ν-ΤΙ-Ν-ΟΝ., Lion's head, with open jaw; around, four corn grains, *wt.* 266 *grs.*, *fine.* 1
- 29 · 41 **Leontini and Catana.** B.C. 415-403. *AR* Hemidrachm. Λ[Ε]ΟΝ., Laureate head of Apollo, in front laurel leaf with berry, and pellet under neck.  
*R* ΚΑΤΑΝΙΩΝ., Bull butting to right, in exergue a fish, *wt.* 30 *grs.*, *in very fine condition and of charming style, apparently unpublished.*  
 Northwick 269, see note by the late M. Borrell 1  
 \* \* Possibly by the artist Prokles, the engraver of the Naxian didrachm, lot 43.
- 22 · 42 **Naxos.** B.C. 415-403. *AR* Tetradrachm. Head of Dionysos bearded, to right, the hair bound by broad diadem ornamented with ivy wreath.  
*R* ΝΑΞΙΟΝ., Silenos seated on ground, from which a vine springs, holding thyrsos and kantharos, *wt.* 261 *grs.*, *very fine and rare.* 1  
*Plate II.*
- 15 10 · 43 **Naxos.** B.C. 415-403. *AR* Didrachm. ΝΑΞΙΩΝ., Laureate head of Apollo to right, behind, laurel leaf with berry, under neck a pellet.  
*R* Silenos seated with thyrsos and kantharos, similar to last, in field to right, priapic term, *wt.* 133.2 *grs.*, *very fine and rare.* 1  
*Plate II.*
- 167 · 44 **Segesta.** B.C. 480-415. *AR* Tetradrachm. ΣΕΓΕΣΤΑΪΙΑ., Head of Segesta, hair in sphendone, adorned with stars, and border with dentated pattern, to right, behind head, ear of corn.  
*R* ΕΓΕΣΤΑΙΩΝ., Nude figure of youthful hunter accompanied by two dogs, his conical cap falls back upon his shoulder, he carries two spears and his chlamys hangs over left arm, and stands with one foot resting on rock; before him is a terminal figure, *wt.* 268 *grs.*, *very fine and of the highest rarity.* 1  
*Plate II.*
- 1 2 · 45 **Segesta.** B.C. 500-480. *AR* Litra. Head of Nymph Segesta, nearly facing, the hair turned up at sides under cord, between two laurel branches, the whole within dotted border.  
*R* ΕΓΕΣΤ[Α]ΙΩΝ., Hound to left; above Gorgon head, in front murex, *wt.* 13 *grs.*, *fine and rare.* 1

Money

Ready

Spunk

Seltman

Money

do

46 **Syracuse** before B.C. 500.  $\mathcal{R}$  Tetradrachm.  $\Sigma\text{YRA.}$ , Slow  
 Quadriga to right; border of dots. 8 10

$\mathcal{R}$  Incuse square divided into four parts, in the centre the head of a nymph or goddess, of archaic style, *wt. 265 grs., very fine and rare.* 1

Plate II.

47 **Syracuse.** B.C. 500-478.  $\mathcal{R}$  Tetradrachm.  $\Sigma\text{YRA}\rho\text{O}\Sigma\text{I}\text{O}\text{N.}$ , 25  
 Female head, the hair indicated by dots; surrounded by dolphins.

$\mathcal{R}$  Quadriga to right, above flying Nike to right, who holds in right hand a wreath, *wt. 266 grs., of fine style and condition, very rare in this state.* 1

\* \* Northwick 340.

Plate II.

48 **Syracuse.** B.C. 500-478.  $\mathcal{R}$  Didrachm.  $\Sigma\text{YPA}\rho\text{O}\Sigma\text{I}\text{O}\text{N.}$ , 5  
 Female head of early style, surrounded by dolphins, as on the preceding piece.

$\mathcal{R}$  Man riding one horse and leading a second, *wt. 133 grs., very fine and scarce.* 1

49 **Syracuse.** B.C. 405-345.  $\mathcal{N}$  Piece of 100 litra or Double 28  
 Dekadrachm,  $\Sigma\text{YPAKO}\Sigma\text{I}\text{O}\text{N.}$ , Head of goddess to left wearing sphenone ornamented with stars, single drop earring, and necklace, on either side of neck a pellet thus ● ●

$\mathcal{R}$  Hercules and lion, *wt. 90 grs., very fine and rare.* 1

\* \* For marks of value see Dr. B. V. Head, *Num. Chron., N.S., vol. XIV, page 20, note 28, in reference to a piece in the Gréau collection, engraved in the Annuaire de Numismatique, tome III, 1868, pl. III.*

Plate II.

50 **Syracuse.** B.C. 405-345.  $\mathcal{N}$  Piece of 50 litrae or Golden 14 10  
 Dekadrachm,  $\Sigma\text{YPAKO}\Sigma\text{I}\text{O}\text{N.}$ , Young male head (the River Anapus?) to left.

$\mathcal{R}$   $\Sigma\text{YPAKO}\Sigma\text{I}\text{O}\text{N}$  upon a band, free horse prancing to right, the whole within a shallow incuse, *wt. 45 grs., of fine style and in beautiful condition, nearly F.D.C.; rare in this state* 1

Plate II.

C

15 10

*O. Hagan*

**51 Syracuse.** B.C. 405-335.  $\mathcal{R}$  Dekadrachm or Medallion by Euainetos (signed).  $\Sigma\Upsilon\text{ΑΚΟΞΙΩΝ.}$ , Head of Persephone to left, wearing earring and necklace, hair turned up at back, arranged in wavy curls and bound with wreath of corn leaves, around, four dolphins, beneath the chin  $\Delta.$ , and below neck **EYAINE.**

$\mathcal{R}$  Quadriga driven to left, horses in high action, above flying Nike about to crown charioteer, in exergue suit of defensive armour, *wt. 651 grs. The rev. is fine and well spread, the obv. somewhat rough in appearance, the engraver's signature is, however, quite distinct ; a desirable specimen* 1

50

**52 Syracuse.** B.C. 405-345.  $\mathcal{R}$  Dekadrachm or Medallion by KIMON.  $\Sigma\Upsilon\text{ΑΚΟΞΙΩ.}$ , Female head, Arethusa? hair in net, and wearing broad bandeau on which the initial of the artist's **K.** ; around four dolphins, on the one immediately below neck the signature of the artist in full, **KIMΩΝ.**

$\mathcal{R}$  Quadriga driven to left, the horses in high action, above flying Victory about to crown charioteer, on exergual line signature of artist, and below, suit of defensive armour, cuirass, greaves, helmet, &c., under cuirass **ΑΘΛΑ.**, *wt. 668 grs., an extremely beautiful and rare piece in very fine condition ; it is unusual to find the inscription ΑΘΛΑ. absolutely clear and well defined. See note by A. J. Evans, Esq., Num. Chron. 3rd series, vol. X, pp. 239-240* 1

*Ready*

\* \* From the collections of Prince Torremuzza and Lord Northwick.

*Plate II.*

91

**53 Syracuse.** B.C. 405-305. Medallion or Dekadrachm. Attributed to a new and unknown artist,  $\Sigma\Upsilon. \text{PA. KO. ΣΙΩΝ.}$  "The *Obv.* exhibits the Head of Persephone to the left, wreathed with barley leaves, and with four dolphins playing around as in Euaineto's well known design. The present type, however, differs in important particulars from all known examples of Euaineto's handiwork, &c. &c."

$\mathcal{R}$ . "The Victorious Quadriga, Victory above, and the panoply below, the most striking divergence from the received type is, however, to be seen in the legend **ΑΘΛΑ.**, which, instead of being relegated in small type to the narrow space beneath the cuirass, is here inscribed in large letters across the open space above the shield, &c." *wt. 660 grs., very fine and of the highest rarity, presumably only one other specimen being known* 1

*Rollin*

\* \* For a most full and interesting account of a similar medallion see Num. Chron. 3rd Series, vol. XI, pp. 230-250, by A. J. Evans, Esq., from whose description the above is abridged.

*Plate II.*

NewSmith	54	<b>Syracuse.</b> B.C. 345-317. <i>El.</i> , Piece of 50 Litra. Laureate Head of Apollo to left ⚔ [ΣΥΡΑΚ]ΟΣΙΩΝ., Tripod, <i>wt.</i> 57 grs., <i>fine</i>	4 . . 1
Seltman	55	<b>Syracuse.</b> B.C. 345-317. <i>El.</i> , Piece of 30 Litra. [ΞΕΥΣ] ΕΛΕΥ[Θ]ΕΡΙ[ΟΣ.], Head of Zeus to left. ⚔ ΣΥΡΑΚΟΣΙΩΝ., Pegasus to left, in front A., <i>wt.</i> 32 grs., <i>scarce</i>	1 17 . 1
Rollin	56	<b>Syracuse.</b> B.C. 317-310. <i>AR</i> Tetradrachm. Head of Persephone to left, wreathed with leaves of barley, around three dolphins, two in front of head and one behind; beneath neck ΦΙ. ⚔ ΣΥΡΑΚΟΣΙΩΝ. (in exergue), Quadriga to left, horses in high action, above triskelis; in exergue, below legend, ΑΙ. ( <i>mon.</i> ), <i>wt.</i> 266 grs., <i>extremely fine</i>	2 8 . 1
		<i>Plate II.</i>	
Money	57	<b>Syracuse.</b> B.C. 317-310. Tetradrachm. Head of Persephone as on preceding piece, with ΦΙ. below neck ⚔ Quadriga, legend in exergue, but without the monogram, <i>wt.</i> 263 grs., <i>very fine</i>	2 10 . 1
Rollin	58	<b>Syracuse.</b> B.C. 317-310. Tetradrachm. Head of Persephone as on the preceding ⚔ ΣΥΡΑΚΟΣΙΩΝ. (in exergue), Quadriga to left, above treskelis, below legend the monogram ΑΙ., <i>wt.</i> 265 grs., <i>fine</i>	2 6 . 1
—do—	59	<b>Syracuse</b> (under Hieron II). B.C. 287-278. Head of Persephone with long hair, wearing wreath of barley leaves, behind head a bee ⚔ ΣΥΡΑΚΟΣΙΩΝ. (in exergue), Quadriga driven by winged Nike to left, above a star, <i>wt.</i> 195 grs., <i>extremely fine and rare, variety of Torremuzza LXXIV, 3</i>	20 10 . 1
		* * Northwick, 370. <i>Plate II.</i>	
—do—	60	<b>Syracuse</b> (under Hieron II). B.C. 275-216. <i>AR</i> Piece of 32 Litra, Head of Hieron wearing royal diadem, to left. ⚔ ΒΑΣΙΛΕΟΣ. ΙΕΡΩΝΟΣ., Quadriga driven by Nike to right, above a star, under fore-leg of nearest horse the letter Κ., <i>wt.</i> 411 grs.; <i>the obv. fine, a piece of high rarity</i>	42 10 . 1
		<i>Plate II.</i>	

- 4 8 · 61 **Syracuse** (under Gelon II). B.C. 275-216.  $\mathcal{A}$  Piece of 8 Litra. Diademed Head of Gelon II, to left, within dotted border.  
 ⚔ **ΒΑΣΙΛΕΩΣ. ΓΕΛΩΝΟΣ.**, Biga driven by winged Nike to right, beneath horses **ΓΑ.** and **Ε.**, *wt. 93.2 grs. (Head, pl. XI, 4), very fine.* 1  
*Plate II.*
- 11 · 62 **Syracuse** (under Philistis). B.C. 280-190.  $\mathcal{A}$  Tetradrachm. Veiled Head of Philistis to left, behind torch.  
 ⚔ **ΒΑΣΙΛΙΣΣΑΣ. ΦΙΛΙΣΤΙΔΟΣ.**, Nike in quadriga, horses galloping to right, underneath **Ε.**, *wt. 209 grs., extremely fine.* 1  
*Plate II.*
- 2 2 · 63 **Syracuse** (under Philistis)). B.C. 280-190.  $\mathcal{A}$  Tetradrachm. Veiled Head of Philistis to left, branch behind.  
 ⚔ Legends as on preceding. Nike in quadriga, horses going slowly to right, underneath **Α.**, *wt. 218 grs., fine.* 1
- 29 · 64 **Syracuse.** 280-190.  $\mathcal{A}$  Pieces of 8 Litra. Head of Demeter veiled, and wearing wreath of barley.  
 ⚔ **ΣΙΚΕΛΙΩΤΑΝ.** (in exergue). Quadriga to right, above monogram **ΙΗΣ.**, *wt. 104 grs., very fine and extremely rare.* 1  
 \* \* Northwick, 230.  
*Plate II.*
- 30 · 65 **Syracuse.** Democracy. B.C. 215-212.  $\mathcal{N}$  Piece of 40 Litra. Head of Pallas in crested Corinthian helmet, to left.  
 ⚔ **ΣΥΡΑΚΟΣΙΩΝ.**, Artemis huntress with hound, in front **ΣΩ.**, *wt. 41.3 grs., extremely fine and exceedingly rare.* 1  
 \* \* Thomas (400); Northwick, 217.  
*Plate II.*
- 2 17 6 · 66 **Syracuse.** B.C. 215-212.  $\mathcal{A}$  Piece of 12 Litra, Head of Pallas to left, helmet ornamented with a griffin.  
 ⚔ **ΣΥΡΑΚΟΣΙΩΝ.**, Artemis huntress with hound, in field to left  
**ΥΑ.**  
**ΣΛ.** *wt. 152 grs., fine.* 1  
 \* \* Northwick, 373.
- 8 10 · 67 **Tauromenium.** B.C. 275-210.  $\mathcal{N}$  Piece of 15 Litra. Laureate head of Apollo to left, behind, an altar?  
 ⚔ **ΤΑΥΡΟΜΕ-ΝΙΤΑΝ.**, Tripod-lebes, in field to right **ΠΑ.** (*mon.*), *wt. 19 grs., extremely fine, scarce in this state.* 1  
 \* \* Northwick, 229.\*  
*Plate II.*

Rollin

Ingram

Lincoln

Rollin

Money

Rollin

Money

Groney

- 68 **Tauromenium.** B.C. 275-210. *AR* Piece of 4 Litra.  
Laureate Head of Apollo to right, star behind.  
*A* TAYPOME—NITAN., Tripod lebes. (*B. M. Guide*, pl. XLVII,  
40), *wt.* 49 *grs.*, *fine and scarce.* 1

112

## MACEDONIA.

Stobart

- 69 **Lete.** B.C. 500. Naked Ithyphallic Satyr, with horse's feet, &c.,  
seizing by the wrist, a woman clad in sleeveless talaric chiton with  
diplois, pellets in field.  
*R* Quadripartite square, *wt.* 153 *grs.*, *very fine.* 1

110

Rollin

- 70 **Bisaltae.** B.C. 500-480. *AR* Octadrachm. Naked Warrior,  
wearing kausia, armed with two spears, standing by horse to right;  
on flank of horse, **C=B.**, the within border of dots.  
*R* Quadripartite incuse square, *wt.* 440 *grs.*, *extremely fine and of*  
*considerable rarity.* 1

41

Plate III.

Groney

- 71 **Odomanti? Derronicus!** B.C. before 480. *AR*  
Dekadrachm. Male figure holding whip in raised right hand, seated  
in chariot drawn by oxen, above, in field, a helmet and circular  
shield, beneath oxen a flower (a rose?) springs from the ground;  
dotted exergual line.  
*R* Triquetra of legs, with floral ornaments in the spaces between,  
*wt.* 619 *grs.*, *obv. fine, rev. in fair state, and very rare.* 1  
\* \* Most probably from the Wigan collection, (*see M. Imhof-Blumer*  
"Monnaies Grecques," page 99, *d.*)

40

Plate III.

Seltman

- 72 **Acanthus.** B.C. 500-424. *AR* Tetradrachm. Lion attacking  
bull, above  $\Theta$ , in exergue floral ornament, the whole within dotted  
border.  
*R* Quadripartite incuse square, *wt.* 253 *grs.*, *very fine and rare.* 1

36

Rollin

- 73 **Chalcidice.** Epoch of the League, B.C. 392-370. *A* Stater.  
Laureate Head of Apollo to right.  
*R* XAA. KID. [E]ON., Lyre with five cords, *wt.* 133 *grs.*, *very fine*  
*and excessively rare.* 1

60

Plate III.

Salting

- 74 **Chalcidice.** Epoch of the League, B.C. 392-379. *AR* Tetra-  
drachm. Head of Apollo, of exceedingly beautiful style, to right,  
behind  $\leftarrow$ .  
*R* XAA. KID. EON., Lyre with seven strings, on upper part  
of lyre O—A., *wt.* 224 *grs.*, *extremely fine and rare in this con-*  
*dition.* 1

49 10

\* \* Collection of an Amateur, 1863.

Plate III.

62	<p>75 <b>Amphipolis.</b> B.C. 424-358. AR Tetradrachm. Laureate head of Apollo, three-quarter face to right, with lion on shoulder.</p> <p>℞ ΑΜΦΙΡΟΛΙΤΕΩΝ., on raised framework enclosing racing torch, to left of which A.; the whole within an incuse square, wt. 221.5 grs., <i>very fine and rare.</i> 1</p> <p style="text-align: center;">* * * Collection of an Amateur, 1863.</p> <p style="text-align: center;">Plate III.</p>	Spink
62	<p>76 <b>Philip II.</b> B.C. 359-336. A Stater. Laureate head of Apollo to right.</p> <p>℞ ΦΙΛΙΠΠΟΥ., Biga, horses galloping to right, under horses a rose and the letters PO. (Rhodes), above the horses, the name of the Rhodian Magistrate ΜΝΑΣΙΜΑΧΟΣ. (this name occurs on a tetradrachm described in Mionnet, vol. III, p. 420, no. 193), wt. 131.7 grs., <i>extremely fine and of the highest rarity.</i> 1</p> <p>* * * From the Northwick collection, 610, where it is described by the late Mr. Borrell as presumably unique. Published by Millengen from this piece.</p> <p style="text-align: center;">Plate III.</p>	Rollin
7 7	<p>77 <b>Philip.</b> B.C. 359-336. A Stater. Head of Apollo to right.</p> <p>℞ ΦΙΛΙΠΠΟΥ. (in exergue), Biga to right, below horses a Boeotian buckler, and above the goad of driver a coiled serpent, wt. 132.5 grs., <i>extremely fine.</i> 1</p> <p style="text-align: center;">* * * Northwick, 601.</p>	-do-
4 15	<p>78 <b>Philip.</b> B.C. 359-336. A Stater. Head of Apollo.</p> <p>℞ ΦΙΛΙΠΠΟΥ. (in exergue), Biga to right, symbol, an ivy leaf under horses, wt. 132.5 grs., <i>fine</i> 1</p>	Money
6 2 6	<p>79 <b>Philip.</b> B.C. 359-336. A Stater. Head of Apollo.</p> <p>℞ Biga to right, symbol, a bee under horses, wt. 133 grs., <i>very fine and of fine style</i> 1</p>	Rollin
4	<p>80 <b>Alexander the Great.</b> B.C. 334. A Stater. Head of Pallas in crested Corinthian helmet, adorned with griffin.</p> <p>℞ ΑΛΕΞΑΝΔΡΟΥ. ΒΑΣΙΛΕΩΣ., Winged Nike holding wreath, &amp;c., in field to left H., and below, wreath enclosing monogram, wt. 132 grs., <i>fine.</i> 1</p>	O'Hagan
4 4	<p>81 <b>Alexander the Great.</b> B.C. 334. A Stater. Head of Pallas, the helmet adorned with coiled snake.</p> <p>℞ ΑΛΕΞΑΝΔΡΟΥ., Nike holding wreath, &amp;c., in field palm, Phoenician letter, and ΣΙ (Sidon), wt. 133 grs., <i>very fine.</i> 1</p>	NewSmith



Money	82	<b>Alexander the Great.</b> B.C. 334. <i>N</i> Stater. Head of Pallas, the helmet adorned with griffin. R <b>ΑΛΕΞΑΝΔΡΟΥ.</b> , Nike holding wreath, &c., in field to right O. = (Ace), <i>wt.</i> 132 <i>grs.</i> , <i>very fine and scarce.</i>	6	15	.
Wagan	83	<b>Alexander the Great.</b> B.C. 334. <i>N</i> Stater. Head of Pallas, helmet adorned with coiled serpent. R <b>ΑΛΕΞΑΝΔΡΟΥ.</b> , Nike with wreath, &c., symbols, bipennis and ear of corn, <i>wt.</i> 132 <i>grs.</i> , <i>very fine.</i>	4	.	.
do	84	<b>Alexander the Great.</b> B.C. 334. <i>N</i> Stater. Head of Pallas, helmet adorned with griffin. R <b>ΑΛΕΞΑΝΔΡΟΥ.</b> , Nike with wreath, &c., in field, at feet of Nike a plant, <i>wt.</i> 132 <i>grs.</i> , <i>in fair condition.</i>	3	12	6
do	85	<b>Alexander the Great.</b> B.C. 334. <i>R</i> Tetradrachm. Head of Herakles in lion's skin. R <b>ΑΛΕΞΑΝΔΡΟΥ.</b> , Jupiter seated, symbol a rose, under chair <b>ΡΟ</b> (Rhodes), and across the field, left, <b>ΔΑΜΑΤΡΙΑΣ</b> , <i>wt.</i> 260 <i>grs.</i> , <i>very fine.</i>	1	1	.
do	86	<b>Alexander the Great.</b> B.C. 334. <i>R</i> Tetradrachm. Head of Herakles in lion's skin. R <b>ΑΛΕΞΑΝΔΡΟΥ.</b> , Jupiter seated, symbol a trident, and below <b>ΜΥ.</b> ( <i>mon.</i> ), Mylasa, <i>wt.</i> 262 <i>grs.</i> , <i>fine.</i>		16	.
Money	87	<b>Alexander the Great.</b> B.C. 336-334. ( <i>Attic Drachm.</i> of his early coinage), Head of the young Herakles in lion's skin. R <b>ΑΛΕΞΑΝΔΡΟΥ.</b> , Eagle on fulmen, symbol, a prow, <i>wt.</i> 63.1 <i>grs.</i> , <i>fine and very rare.</i> * * Northwick, No. 652*.	1	12	.
Rollin	88	<b>Demetrius Poliorcetes.</b> B.C. 306-283. <i>R</i> Tetradrachm. Head of Demetrius, horned, and wearing plain fillet, to right. R <b>ΒΑΣΙΛΕΩΣ ΔΗΜΗΤΡΙΟΥ.</b> , Poseidon with one foot resting on rock, holding long trident in left hand, two monograms in field, <i>wt.</i> 267 <i>grs.</i> , <i>very fine.</i>	2	18	.
Money	89	<b>Philip V.</b> B.C. 220-179. <i>R</i> Didrachm. Diademed Head of Philip V to right. R <b>ΒΑΣΙΛΕΩΣ ΦΙΛΙΠΠΟΥ.</b> , in two lines, divided by a club; the whole within wreath of oak, <i>wt.</i> 98 <i>grs.</i> , <i>a fine portrait, but a considerable portion of the coin is wanting, rare.</i> * * Northwick, 703.	1	1	.

11

90 **Perseus.** B.C. 178-168.  $\mathcal{R}$  Tetradrachm. Diademed Head of Perseus to right.  
 $\mathcal{R}$  **ΒΑΣΙΛΕΩΣ ΠΕΡΣΕΩΣ.**, Eagle on fulmen, above **HP.** (*mon.*), and between the legs of eagle  $\Phi$ ; the whole within a wreath of oak, below tie of wreath a plough, *wt.* 261.8 *grs.*, *very fine.* 1  
 \* \* Northwick, 708.  
*Plate III.*

Rollin

THRACE.

40

91 **Aenus.** B.C. 450-400.  $\mathcal{R}$  Tetradrachm. Head of Hermes to right wearing close-fitting petasos, which is inscribed **AINI.**  
 $\mathcal{R}$  Incuse square, within which linear square, containing a goat; around, the name of magistrate, **ΑΝΤΙΑΔΑΣ.** Symbol, a naked figure of Pan, *wt.* 248.5 *grs.*, *fine*, and a rare variety. 1  
*Plate III.*

Money

5 2 6

92 **Aenus.** B.C. 400-350.  $\mathcal{R}$  Tetradrachm. Head of Hermes facing, in close-fitting petasos.  
 $\mathcal{R}$  **ΑΙΝΙΟΝ.**, Goat to right, in front an amphora with ivy spray, below, an astragalos, *wt.* 240 *grs.*, *fine.* 1

Settman

4 15

93 **Abdera.** B.C. 450-430.  $\mathcal{R}$  Tetradrachm. Griffin with curled wing, seated on fish to left; one paw raised, magistrate, **ΚΑΛΛΙΔΑΜΑΣ.**  
 $\mathcal{R}$  **ΑΒΔΗΡΙΤΕΩΝ.**, in shallow incuse, in centre smaller square quartered, *wt.* 231 *grs.*, (*B. M. Cat. Thrace*, p. 67), an exceedingly well preserved specimen. 1

Spink

41

94 **Abdera.** B.C. 408-350.  $\mathcal{R}$  Stater. **ΑΒΔΗ.**, Recumbent Griffin to left.  
 $\mathcal{R}$  Figure of Herakles advancing left, carrying club in left hand, and over right shoulder a strung bow, in field escallop shell and dolphin, magistrate, **ΕΡΙ. ΤΗΛ[Ε]ΜΑΧΟ.**, the whole within shallow incuse, *wt.* 172.8 *grs.*, *very fine and very rare*, apparently unpublished. 1  
*Plate III.*

Rollin

15

95 **Thasos.** B.C. 550-465.  $\mathcal{R}$  Stater. Naked ithyphallic Satyr kneeling on one knee, and carrying in his arms a nymph.  
 $\mathcal{R}$  Quadripartite incuse square, *wt.* 150 *grs.*, *very fine.* 1

O'Hagan

Rollin

96 **Thasos.** B.C. 465-311.  $\mathcal{R}$  Drachm. Naked ithyphallic Silenos, with horse's tail, and crowned with ivy, kneeling on one knee, carrying in his arms a nymph, *wt. 56.5 grs., very fine, and of beautiful style.*

$\mathcal{R}$  Quadripartite incuse square.

\* \* "In style many of these later Thasian staters, &c., are admirable as works of art, and quite worthy of the age of Pheidias."—*Hist. Num.* p. 227.

Plate III.

—do—

97 **Thrace.** Lysimachus. King. B.C. 323-281.  $\mathcal{A}$  Stater. Head of the deified Alexander, with horn of Ammon.

$\mathcal{R}$  ΒΑΣΙΛΕΩΣ ΛΥΣΙΜΑΧΟΥ., Pallas seated, *wt. 131 grs., very fine, and of fine style.* 1

Plate III.

NewSmith

98 **Thrace.** Lysimachus. King. B.C. 323-281.  $\mathcal{R}$  Tetradrachm. Head of the deified Alexander, with the horn of Ammon.

$\mathcal{R}$  ΒΑΣΙΛΕΩΣ ΛΥΣΙΜΑΧΟΥ., Pallas Nikephoros seated, in front caduceus, and behind a bee, *wt. 263.3 grs., very fine, and of fine style.* 1

\* \* Northwick, 539 (from the Modena collection).

### THESSALY.

O'Hagan

99 **Ænians.** Circa B.C. 168-146.  $\mathcal{R}$  Didrachm. Head of Athena, helmet adorned with four horses.

$\mathcal{R}$  ΑΙΝΙΑΝΩΝ., Slinger adjusting his sling, behind him two javelins, &c. Magistrate, ΕΥΞΕΝΟΣ., *wt. 110.1 grs., fine.* 1

\* \* *Hist. Num.* fig. 173. Northwick, 715.

Rollin

100 **Larissa.** B.C. 400-344.  $\mathcal{R}$  Didrachm. Head of the water nymph, Larissa, nearly facing, of very fine style, copied from Kimon's head of Arethusa.

$\mathcal{R}$  ΛΑΡΙ (in exergue), ΣΑΙΩΝ., Horse grazing to right, offside leg raised, *wt. 179 grs., fine and exceedingly rare.* 1

\* \* This piece has been gilt in ancient times.

Plate III.

Ready.

101 **Phalanna.** B.C. 400-314.  $\mathcal{R}$  Trihemiobol. Cybele, seated on lion going to left, holding scarf, beneath lion ΓΟ.

$\mathcal{R}$  ΦΑΛΑΝΝΑΙΩ[Ν]., Hunter wearing short cloak, advancing to right and about to strike with spear or javelin, while with his left hand he holds a hound which is about to spring at the prey, *wt. 23.9 grs., in good condition, and apparently unpublished.* 1

Plate III.

D



## PHOCIS.

Rollin 109 **Delphi.** B.C. 420. AR Stater. Ram's head to right with dolphin beneath; border of dots. 51

℞ Four deep incuse squares, with double framing, each containing a star of four points, *wt.* 186.5 *grs.*, *very fine and presumably unique*, (see *Hist. Num.*, page 289, referring to this coin.) 1

Plate III.

## BŒOTIA.

Money 110 **Thebes.** B.C. 426-387. AR Stater. Bœotian shield. 7

℞ ΘΕ, the infant Herakles strangling serpents; in field strung bow and club, *wt.* 184 *grs.*, *fine and rare.* 1

Plate III.

Rollin 111 **Thebes.** B.C. 426-387. AR Stater. Bœotian shield. 8

℞ ΘΕ, Head of bearded Dionysos, crowned with ivy to right, *wt.* 188.5 *grs.*, *very fine and rare.* 1

\* \* Northwick, 774.

Plate III.

Spink 112 **Thebes.** B.C. 426-387. EL, Head of bearded Dionysos, wearing wreath of ivy to right. 16 10

℞ ΘΕ, the infant Herakles strangling serpents, the whole within shallow incuse, *wt.* 47 *grs.*, *very fine and very rare.* 1

\* \* From the Merlin Collection.

Plate III.

New Smith 113 **Thebes.** B.C. 338-315. AR Stater. Bœotian shield. 1 14

℞ ΒΟ-Ω, an Amphora, symbol, a bunch of grapes above, *wt.* 190.5 *grs.*, *very fine.* 1

## ATTICA.

Ready 114 **Athens.** B.C. 527-430. AR Tetradrachm (Syrian or Phœnician copy). Head of Pallas in close-fitting helmet, wearing round carring. 4

℞ ΣΘ, Owl facing (as on the Dekadrachm), sprig of olive on either side with two leaves and a berry, *wt.* 265 *grs.*, *very fine and rare.* 1

\* \* Compare Class A, pl. III, B.M. Catalogue, Attica, &c.

Money 115 **Athens.** B.C. 86-83? (Period V). AR Tetradrachm. Head of Athena Parthenos, wearing crested helmet, the front adorned with the foreparts of four horses, and the side with a griffin. 2 5

℞ Owl upon an Amphora, inscribed with A, monogram on either side, the whole within olive wreath, *wt.* 260 *grs.*, *very fine.* 1

\* \* B.M. Cat. Attica, &c., pl. XIII, no. 7.

## SICYONIA.

- 6 . . 116 **Sicyon.** B.C. 400-322. AR Stater. Chimæra to right; below, the head of the river god, Asopus?  
 R Dove flying within wreath of olive, *wt. 188.2 grs., very fine and a scarce type.* 1  
 \*\*\* From the Merlin Collection.
- 3 10 . 117 **Sicyon.** B.C. 400-322. AR Stater. ΣΕ., Chimæra to right.  
 R Dove flying, within wreath of olive, *wt. 189.7 grs., very fine.* 1  
 \*\* Northwick, 818.

## ELIS.

- 27 . . 118 **Elis.** B.C. 480-421. AR Stater. [F]ΑΛΕΙ. Ο[Ν], Eagle with spread wings.  
 R FA., Winged Nike, looking back, and holding fillet, *wt. 187.5 grs., fine and of beautiful style, apparently unpublished.* 1  
 Plate III.
- 42 . . 119 **Elis.** B.C. 471. AR Stater. Eagle with closed wings, standing on, and tearing a serpent, the whole upon a circular shield within dotted border.  
 R FA (the A incuse), Fulmen, with volutes and sprays of olive, border of dots, the whole in circular incuse, *wt. 186 grs., very fine and rare in this state.* 1  
 Plate III.
- 14 10 . 120 **Elis.** B.C. 471-370. AR Stater. Head of an eagle of very fine work to left, leaf below.  
 R F. A., Fulmen with volutes, &c., the whole within wreath of olive, *wt. 187 grs., very fine and rare.* 1  
 Plate IV.
- 3 . . 121 **Elis.** B.C. 362-312. AR Stater. Laureated head of Zeus to right.  
 R FΑΛΕΙΩΝ., Eagle with closed wings standing on meta, *wt. 187.1 grs., fine, the head of Zeus of good style.* 1  
 Plate IV.

## LACONIA.

- 16 5 . 122 **Lacedaemon.** B.C. 310-266. AR Tetradrachm. Diademed head of king, (Arens King of Sparta?) to left, borders of dots.  
 R Λ-A., Archaic agalma of the Apollo of Amyclæ helmeted, holding spear and bow, and adorned on the side with a cock standing on a plustre, to right of statue a goat, and to left a wreath, *wt. 259.4 grs., very fine and excessively rare.* 1  
 Plate II.

Devolmish

Money

Rollin

Money

Spink

Rollin

Money

Money

123 **Lacedaemon.** *Circa* B.C. 200. *AR* Tetradrachm. Head of Pallas to right in crested Corinthian helmet.

℞ Λ—Α., Herakles seated on rock, which is covered with lion's skin, his right hand resting on club, *wt.* 239 *grs.*, *fine*, but there are several scratches in field on rev., *very rare.* 1

\* \* Northwick, 833.

*Plate IV.*

8 5

### ARCADIA.

do

124 **Stymphalus.** B.C. 400-362. *AR* Stater. Head to right of Artemis Stymphalia, laureate and wearing earring with five pendants. 131

℞ ΣΤΥΜΦΑΛΙΩΝ., Herakles with lion's skin wrapped round left arm and holding bow to left with uplifted club, between his legs ΣΟ., *wt.* 185 *grs.*, *very fine*, the rev. is in especially fine state, *very rare.* 1

\* \* Merlin Collection.

*Plate IV.*

### CRETE.

Rollin

125 **Cydonia.** *Circa* B.C. 350-300. *AR* Stater. Dionysiac female head to right, crowned with vine leaves, &c. 2 10

℞ ΚΥΔΩΝ., Kydon as a naked archer stringing his bow, *wt.* 171.5 *grs.*, in excellent condition, and scarce. 1

\* \* Northwick, 864.

Money

126 **Itanus.** B.C. 400-300. *AR* Stater. Head of Athena Salmonia in crested Athenian helmet. 14 5

℞ [Ι]ΤΑΝΙ[ΩΝ]., Eagle looking back, all in shallow incuse square, *wt.* 178 *grs.*, *very fine* and of exceedingly good style, scarce 1

\* \* Northwick, 881.

*Plate IV.*

do

127 **Itanus.** B.C. 400-300. *AR* Drachm. Head to left of Athena Salmonia in crested Athenian helmet. 6 10

℞ ΙΤΑΝΙΩΝ., Eagle looking back, to right in field a fish god, the whole with incuse square, *wt.* 84 *grs.*, *very fine* and scarce. 1

\* \* Northwick, 882.

do

128 **Phalasarna.** B.C. 400-300. *AR* Stater. Head of Diktynna, hair rolled. 5 5

℞ Φ. Α., between the prongs of upright trident, border of dots, *wt.* 87.5 *grs.*, *very fine* and rare. 1

\* \* Northwick, 892.

*Plate IV.*

## THE CYCLADES.

8 8 · 129 **Naxos (Insula).** *Circa* B.C. 600-490.  $\mathcal{A}$  Stater. Kantharos, bound with ivy-wreath and with bunch of grapes depending from each handle; above an ivy leaf.

℞ Incuse square quartered, *wt.* 185·9 *grs.*, *very fine and rare.* 1

\* \* Northwick, 1072.

Money

## ASIA.

## COLCHIS AND PAPHLAGONIA.

11 · 130 **Colchis.** B.C. 400 or later.  $\mathcal{A}$  Tetrobol. Female head of Archaistic style.

℞ Bull's head, *wt.* 35 *grs.*, (*B. M. Cat., Pontus, &c., pl. I., 10.*)

**Sinope.** *Circa* B.C. 333-306.  $\mathcal{A}$  Tetrobol. Head of Sinope to left, hair in sphendone, wearing necklace and earring.

℞ ΣΙ.—ΝΩ., Eagle facing, head to left, in field to right Π. Ρ. (monogram), *wt.* 47 *grs.*, *very fine.*

**Sinope.** *Circa* B.C. 333-306.  $\mathcal{A}$  Diobol. Head of Sinope, three quarters to left, wearing necklace.

℞ ΣΙ.—Ν[Ω], Eagle facing, head to left, *wt.* 24 *grs.*, *fine.* 3

Ready

## KINGS OF PONTUS, &amp;c.

5 5 · 131 **Mithradates VI, the Great.** B.C. 121-63. Diademed head of king to right, the hair blown back.

℞ ΒΑΣΙΛΕΩΣ. ΜΙΘΡΑΔΑΤΟΥ. ΕΥΠΑΤΟΡΟΣ., Stag browsing, in field, crescent and star, monogram and the date ΕΚΣ., the whole with wreath of ivy, *wt.* 260 *grs.*, *very fine.* 1

1 · 132 **Polemon II.** B.C. 37-63.  $\mathcal{A}$  Denarius. ΒΑΣΙΛΕΩΣ. ΠΟΛΕΜΩΝΟΣ., diademed bust to right.

℞ ΕΤΟΥΣ. Κ. (20th regnal year) laureate bust of Nero, *wt.* 55 *grs.*, *fine and scarce.* 1

\* \* Northwick, 917.

Spink

Stobar





## SECOND DAY'S SALE.

### BITHYNIA.

LOT

*Lincoln* 133 **Heracleia Pontica** (time of Timotheus and Dionysius).  
B.C. 347-338.  $\mathcal{R}$  Stater. Head of young Dionysos ivy crowned,  
&c., to left.

$\mathcal{R}$  ΤΙΜΟΘΕΟΥ. ΔΙΟΝΥΣΙΟΥ., Herakles erecting trophy, at  
his feet a ram's head, *wt.* 146 *grs.*, *fine.* 1

\* \* Northwick 925.

*Rollin* 134 **Heracleia Pontica** (time of Lysimachus). B.C. 302-281.  
Head of young Herakles in lion's skin to right.

$\mathcal{R}$  ΗΡΑΚΛΕΩΤΑ[N]. Dionysos seated holding kantharos and  
thyrsos beneath seat, ΕΥ. (mon.), *wt.* 147.5 *grs.*, *very fine and ex-*  
*tremely rare.* 1

\* \* Northwick, 921.

*Plate IV.*

### KING OF BITHYNIA.

*Lincoln* 135 **Nicomedes II.** B.C. 149-91.  $\mathcal{R}$  Tetradrachm. Diademed  
head of King to right.

$\mathcal{R}$  ΒΑΣΙΛΕΩΣ. ΕΠΙΦΑΝΟΥΣ. ΝΙΚΟΜΗΔΟΥΣ., Zeus stand-  
ing, holding spear and wreath, in field Eagle on fulmen, mon. and  
ΑΙΣ., *in fair condition, but has been filed on edge, thus reducing the*  
*weight to 229 grs.* 1

\* \* Northwick, 947.

### MYSIA.

#### CYZICUS.\*

*Rollin* 136 **Stater, El.** Dionysiac female head wearing wreath of ivy, be-  
neath tummy. 29

$\mathcal{R}$  Incuse square divided into four, *wt.* 246.5 *grs.*, *of fine style and in*  
*very fine condition (p. 67, no. 37) [pl. II, 14].* 1

*Plate IV.*

\* References to "Electrum Coinage of Cyzicus," by W. Greenwell, M.A., D.C.L.,  
F.R.S., F.S.A., &c. : Rollin & Fewardent, London and Paris, 1887.

- |           |   |  |             |
|-----------|---|--|-------------|
| 9 15      | · | 137 <b>Stater.</b> <i>El.</i> Herakles kneeling right on tunny, and strangling the Nemean lion.<br><i>R.</i> Incuse as before, <i>wt.</i> 248 <i>grs.</i> , <i>fine and rare</i> ( <i>p.</i> 86, <i>no.</i> 69) [ <i>pl.</i> III, 20].   | Spink<br>1  |
| 25 10     | · | 138 <b>Stater.</b> <i>El.</i> Bearded head to left wearing conical head dress, wreathed with laurel, beneath tunny.<br><i>R.</i> Incuse, <i>wt.</i> 246.1, <i>very fine and a very rare type</i> ( <i>p.</i> 86, <i>no.</i> 70) [ <i>pl.</i> III, 21].                                 | Rollin<br>1 |
| Plate IV. |   |  |             |
| 11        | · | 139 <b>Stater.</b> <i>El.</i> Naked figure kneeling to left on tunny, and holding on his right arm a crested helmet, and in his left hand a short sword.<br><i>R.</i> Incuse, <i>wt.</i> 246 <i>grs.</i> , <i>fine and scarce</i> ( <i>p.</i> 96, <i>no.</i> 90) [ <i>pl.</i> IV, 13]. | — do —<br>1 |
| 10 10     | · | 140 <b>Stater.</b> <i>El.</i> Lion with open mouth, seated to left on tunny, the right fore-paw raised.<br><i>R.</i> Incuse, <i>wt.</i> 249.6 <i>grs.</i> , <i>fine</i> ( <i>p.</i> 103, <i>no.</i> 105) [ <i>pl.</i> IV, 34].   | — do —<br>1 |
| 7         | · | 141 <b>Stater.</b> <i>El.</i> Bull standing on tunny, butting to right.<br><i>R.</i> Incuse, <i>wt.</i> 248 <i>grs.</i> , <i>fine</i> ( <i>p.</i> 109, <i>no.</i> 122) [ <i>pl.</i> V, 16].  | — do —<br>1 |
| 9         | · | 142 <b>Stater.</b> <i>El.</i> Pegasus flying to right, beneath tunny to right.<br><i>R.</i> Incuse, <i>wt.</i> 248 <i>grs.</i> , <i>fine</i> ( <i>p.</i> 111, <i>no.</i> 127) [ <i>pl.</i> V, 21].   | — do —<br>1 |
| 9         | · | 143 <b>Stater.</b> <i>El.</i> Ram, with head turned back, kneeling to left on tunny.<br><i>R.</i> Incuse, <i>wt.</i> 247.5 <i>grs.</i> , <i>fine</i> ( <i>p.</i> 113, <i>no.</i> 131) [ <i>pl.</i> V, 25].   | — do —<br>1 |
| 7         | · | 144 <b>Stater.</b> <i>El.</i> Head of goat to left, behind tunny upwards.<br><i>R.</i> Incuse, <i>wt.</i> 247.3 <i>grs.</i> , <i>fine</i> ( <i>p.</i> 113, <i>no.</i> 134) [ <i>pl.</i> V, 29].  | Ready<br>1  |
| 3 8       | · | 145 <b>Stater.</b> <i>El.</i> Griffin with rounded wing, seated on tunny to left, the right fore-paw raised.<br><i>R.</i> Incuse, <i>wt.</i> 247 <i>grs.</i> , <i>in fair condition</i> ( <i>p.</i> 118, <i>no.</i> 144) [ <i>pl.</i> VI, 6].  | — do —<br>1 |
| 9 5       | · | 146 <b>Stater.</b> <i>El.</i> Griffin with pointed wings seated to left on tunny.<br><i>R.</i> Incuse, <i>wt.</i> 246.6 <i>grs.</i> , <i>fine ; a rare type</i> ( <i>p.</i> 118, <i>no.</i> 146) [ <i>pl.</i> VI, 8].  | Rollin<br>1 |
| 2 7 6     | · | 147 <b>Hecta.</b> <i>El.</i> Youthful male head to left, behind tunny downwards.<br><i>R.</i> Incuse, <i>wt.</i> 40.1 <i>grs.</i> , <i>fine and unpublished.</i> ( <i>For a Stater of this issue see p.</i> 92, <i>no.</i> 7) [ <i>pl.</i> III, 32].                                   | — do —<br>1 |
| 2 12      | · | 148 <b>Hecta.</b> <i>El.</i> Male figure, naked, beardless, kneeling to right, holding in right hand a knife, and on extended left hand a tunny.<br><i>R.</i> Incuse, <i>wt.</i> 42 <i>grs.</i> , <i>fine</i> ( <i>p.</i> 95, <i>no.</i> 88) [ <i>pl.</i> IV, 11].                     | Spink<br>1  |

- Seltman* 149 **Lampsacus.** *Circa* B.C. 500. *El.* Stater. Fore-part of winged horse to left. 4 6  
 ⚔ Quadripartite incuse square, *wt.* 239 *grs.*, *fine and scarce.* 1  
*Plate IV.*
- do* 150 **Lampsacus.** B.C. 450-412. *El.* Stater. Fore-part of winged horse to left in vine wreath, below  $\equiv$ . 4 6  
 ⚔ Quadripartite incuse square, *wt.* 235 *grs.*, *fine and scarce.* 1
- Ready* 151 **Lampsacus.** B.C. 412-350. *N.* Stater. Head of Ariadne or Mænad, wearing wreath of ivy, hair blown back. 20 5  
 ⚔ Fore-part of winged horse, *wt.* 130.3 *grs.*, *very fine and rare.* 1  
*Plate IV.*

## KING OF PERGAMUM.

- Spink* 152 **Eumenes II.** B.C. 197-159. *R.* Tetradrachm. Diademed head of the King to right. 1 9  
 ⚔ ΦΙΛΕΤΑΙΡΟΥ. (in front), Pallas enthroned crowning name; behind, shield and bow, in field, ivy leaf and A., *wt.* 263 *grs.*, *fine.* 1

## TROAS.

- Ready* 153 **Neandria.** B.C. 403-300. *R.* Hemidrachm. Head of Apollo to right. 10  
 ⚔ NEAN., Ram feeding; the whole within incuse, *wt.* 30 *grs.*, *very fine and very rare, presumably unpublished.* 1  
 \* \* \* For a small piece weighing 7.5 *grs.* See Fox ii, 48.  
*Plate IV.*

## ISLAND OF TROAS.

- do* 154 **Tenedos.** B.C. 400-350. *R.* Stater. Janiform head of fine style (Dionysos and Ariadne). 11  
 ⚔ [T]ENE. ΔΙ. ΟΝ., Double Axe, to right, a lyre; to left a bunch of grapes; the whole within incuse square, *wt.* 225 *grs.*, *very fine and rare.* 1  
 \* \* \* Northwick, 1022.  
*Plate IV.*

## ÆOLIS.

- Seltman* 155 **Myrina.** *Circa* B.C. 197. *R.* Tetradrachm. Laureate head of Apollo to right. 2 3  
 ⚔ ΜΥΡΙΝΑΙΩΝ., Statue of Apollo Gryneus, standing with lustral branch and patera; at his feet omphalos and patera, *wt.* 251.5 *grs.*, *fine.* 1  
 \* \* \* Northwick, 1028.

## LESBOS.\*

## ELECTRUM COINAGE OF MYTILENE.

HECT.E—*Circa* B.C. 450-387. *Weight averaging about 40 grs.*

3	12	6	156	Head of lion, with open mouth to right. R Calf's Head, incuse, <i>very fine</i> . <i>B. M. Cat., Plate XXXI, 21.</i>	1	Rollin
2	.	.	157	Fore-part of Winged Boar to right. R Lion's Head, incuse to right, <i>very fine</i> . <i>B. M. Cat., Plate XXXI, 6.</i>	1	O'Hagan
4	10	.	158	Fore-part of Winged Lion to left. R Cock's Head, incuse to left, <i>very fine</i> . <i>B. M. Cat., Plate XXXI, 26.</i>	1	Rollin
3	.	.	159	Fore-part of Boar to right. R Lion's Head, in incuse square, <i>very fine</i> . <i>B. M. Cat., Plate XXXII, 3.</i>	1	Ready.
5	2	6	160	Head of Pallas, in crested helmet, wearing round earring to right; behind $\Lambda$ [E]. R Two Calves' Heads facing, in incuse square, <i>fine</i> . <i>B. M. Cat., Plate XXXII, 8.</i>	1	—do—
4	17	6	161	Bearded Head, of fine style, with horn of Ammon to right. R Female Head, wearing diadem, in shallow incuse, <i>very fine</i> . <i>B. M. Cat., Plate XXXII, 26.</i>	1	Rollin
4	4	.	162	Head of Pallas, of fine style, wearing crested helmet adorned at the side with volute. R Bearded Head, wearing Persian head-dress, in linear square, <i>very fine, and a scarce type</i> . <i>B. M. Cat., Plate XXXIV, 17.</i>	1	—do—
2	.	.	163	Head of Apollo to right. R Lyre in linear square, <i>very fine</i> . <i>B. M. Cat., Plate XXXIII, 4.</i>	1	O'Hagan
4	.	.	164	Youthful Male Head, wearing kausia, cord passing under chin. R Leopard in linear square, <i>very fine</i> . <i>B. M. Cat., Plate XXXIII, 11.</i>	1	Ready
1	16	.	165	Another, similar to last, <i>not such good style, but the rev. is more complete</i> . <i>B. M. Cat., Plate XXXIII, 11.</i>	1	O'Hagan

\* *References to Catalogue of the British Museum "Troas, Aeolis & Lesbos,"*  
by W. Warwick Wroth, Esq., 1895.

<i>Spink</i>	166	Head of Demeter, veiled, wearing earring and wreath of corn. R Tripod with pendant fillet, in linear square, <i>very fine</i> . <i>B. M. Cat., Plate XXXIV, 28.</i>	1	4	12	.
<i>—do—</i>	167	Head of Demeter, hair rolled at back, wearing round earring and wreath of corn. R Bull butting left, in linear square, <i>very fine</i> . <i>B. M. Cat., Plate XXXIII, 9.</i>	1	2	.	.
<i>Seltman</i>	168	Head of Ariadne, ? wearing veil and wreath, with bunches of grapes. R Lion devouring prey, in linear square, <i>very fine</i> . <i>B. M. Cat., Plate XXXIII, 10.</i>	1	4	10	.
<i>Rollin</i>	169	Youthful Male Head, with horn of Ammon to right. R Eagle looking back, in linear square, <i>very fine</i> . <i>B. M. Cat., Plate XXXIV, 22.</i>	1	2	17	6
<i>O'Hagan</i>	170	Head of Apollo, of fine style, laureate, hair long, to right. R Female Head with flowing hair, in linear square, <i>fine</i> . <i>B. M. Cat., Plate XXXIV, 16.</i>	1	1	16	.
<i>Seltman</i>	171	Head of one of the Dioskuri, wearing conical pileus bound with wreath; on either side a star. R Female Head in linear square, <i>in very good condition</i> . <i>B. M. Cat., Plate XXXIV, 13.</i>	1	1	9	.
<i>Rollin</i>	172	Female Head, wearing wreath, earring with three pendants; and necklace to right. R Youthful Head crowned with wreath of ivy leaves, in linear square, <i>very fine</i> .	1	4	4	.
<i>O'Hagan</i>	173	Another, similar to last, but the head on <i>obv.</i> wears single pendant, earring, <i>fine</i> . <i>B. M. Cat., Plate XXXIII, 18.</i>	1	1	16	.
<i>Seltman</i>	174	Head of young Dionysos, ivy crowned, to right. R Youthful head, wearing plain fillet and projecting horn, in linear square, <i>very fine</i> . <i>B. M. Cat., Plate XXXIII, 24.</i>	1	3	10	.
<i>Ready</i>	175	Youthful male Head, the hair short, bound with plain diadem. R Female Head, wearing sphenone, in linear square, <i>fine</i> . <i>B. M. Cat., Plate XXXIII, 27.</i>	1	2	.	.
<i>Seltman</i>	176	Head of Apollo, laureate to right. R Female Head wearing sphenone to right, coiled serpent behind, <i>very fine</i> . <i>B. M. Cat., Plate XXXIII, 28.</i>	1	1	13	.

- 2 1 . 177 Another, very similar to last, but from different die, the head on rev. being smaller, *fine*. 1  
*B. M. Cat., Plate XXXIV, 2.*
- 2 2 . 178 Head of Young Dionysos, ivy crowned, to right. 1  
 ♂ Female Head, hair in korymbos, in linear square, *fine*.  
*B. M. Cat., Plate XXXIV, 5.*
- 1 7 . 179 **Colophon.** B.C. Fifth century. ♂ Drachm. Head of Apollo, Klarios. 1  
 ♂ ΚΟΛΟΦΩΝΙΟΝ., Lyre, the whole within square incuse, *wt. 85 grs., fine and scarce.*
- 2 . . 180 **Ephesus.** B.C. 394-295. ♂ Tetradrachm. Ε. Φ., a bee. 1  
 ♂ Fore-part of stag with head turned back; behind it a palm tree, magistrate, ΕΟΡΑΘΙΔΗΣ. (*Head's Coinage of Ephesus, p. 34*), *wt. 233 grs., fine and scarce.*
- 4 1 . 181 **Ephesus.** B.C. 258-202. ♂ Didrachm. Bust of Greek Artemis to right. 1  
 ♂ Ε-Φ., Fore-part of stag looking back, in field above the Φ. a bee. magistrate, ΜΙΝΝΟΣ., *wt. 100.5 grs., fine.*  
*Plate IV.*
- 2 17 6 182 **Ephesus.** B.C. 159-133. ♂ Didrachm. Of the undated Cistophori class, club and lion's skin of Herakles within a wreath of laurel. 1  
 ♂ ΕΦΕ., a bunch of Grapes displayed upon a vine leaf; above, a bee, in field Α, and torch, *wt. 86.1 grs., very fine and very rare, (var. of Head, Coinage of Ephesus, pp. 62, 63, nos. 16, 17).*  
*Plate IV.*
- 2 2 . 183 **Magnesia ad Maeandrum.** B.C. 350-300. ♂ Drachm. 1  
 Horseman, wearing short cloak, with couched lance to right.  
 ♂ ΜΑΓΝ., Bull butting to left, magistrate's name, ΑΠΟΛΛΟΔΩΡΟΣ., the whole within circular border of Mæander pattern, *wt. 48.5 grs., very fine.*  
*Plate IV.*
- ELECTRUM HECTÆ OF PHOCAEA.\*  
 B.C. 480-400. *Weight, about 40 grs.*
- 2 . . 184 Head of Griffin, with open mouth and protruding tongue; behind, a seal. 1  
 ♂ Irregular incuse, *fine*.  
*B. M. Cat., Type of Plate IV, 12.*
- 2 4 . 185 Head of Hermes, wearing petasos, the hair in short curls. 1  
 ♂ Mill sail incuse, *very fine*.  
*B. M. Cat., Plate IV, 23.*

Ready

O'Hagan

Ready

—do—

Rollin

Seltman

Spink

Ready

—do—

\*.\* References to British Museum Catalogue "Ionia," by B. V. Head, Esq. D.C.L., &c. 1892.

Rollin	186	Young Male Head, wearing wreath of ivy, &c., to left. ⚔ Mill sail incuse, <i>very fine</i> . <i>B. M. Cat., Plate IV, 25.</i>	1	2 12
Ready	187	Female Head to left, wearing single pendant earring, the hair drawn forward, in a roll, and fastened in a knot on forehead; beneath, a seal. ⚔ Mill sail incuse, <i>fine</i> . <i>B. M. Cat., Plate V, 11 (var.).</i>	1	3 3
O'Hagan	188	Female Head to left, wearing single pendant earring, the hair in reticulated sakkos. ⚔ Mill sail incuse, <i>fine</i> . <i>B. M. Cat., Plate V, 13.</i>	1	2 2
Rollin	189	Female Head to left, wearing sphendone, the forepart of which is ornamented with wreath; under neck a seal. ⚔ Mill sail incuse, <i>fine</i> . <i>B. M. Cat., Plate V, 15.</i>	1	2 16
O'Hagan	190	Head of Pallas in crested helmet, the side adorned with figure of a griffin with rounded wing; below, a seal. ⚔ Mill sail incuse, <i>fine</i> . <i>B. M. Cat., Plate V, 2.</i>	1	1 8
Spink	191	Head of Omphale, wearing lion's skin, club behind neck; below a seal. ⚔ Mill sail incuse, <i>very fine</i> . <i>B. M. Cat., Plate V, 8.</i>	1	3
Rollin	192	<b>Smyrna.</b> B.C. 190-133. ⚔ Tetradrachm. Head of Kybele to right, wearing turreted crown. ⚔ ΣΜΥΡΝΑΙΩΝ., Lion to right, the off side forepaw raised, in exergue ΜΟΞΧΟΣ; the whole with wreath, <i>wt. 253 grs., very fine.</i> 1		7 7

## ISLANDS OF IONIA.

Lincoln	193	<b>Chios.</b> Circa B.C. 600-490. ⚔ Didrachm. Sphinx to left, in front an amphora. ⚔ Quadripartite incuse square, <i>wt. 122.8 grs.</i>	1	2
Salting	194	<b>Chios.</b> B.C. 478-412. ⚔ Tetradrachm. Seated sphinx, with rounded wing, to left, in front a pointed amphora, above a bunch of grapes; behind sphinx astragalus. ⚔ Quadripartite incuse square, <i>wt. 240 grs., in extremely fine state, the whole of the type well defined, rare in this condition.</i> * * Northwick 1073. <i>Plate IV.</i>	1	56

1 14

195 **Chios.** B.C. 478-412. *AR* Drachm. Sphinx with rounded wing seated to left, in front pointed amphora; above a bunch of grapes.  
*R* Quadrupartite incuse square, *wt.* 55.7 *grs.*, *very fine* 1

Ready

90

196 **Samos.** B.C. 594-365. *AR* Rhodian Tridrachm of the Federal Coinage (*Waddington, Rev. Num.*, 1863, p. 233), **ΣΥΝ.**, The infant Herakles kneeling on left knee, strangling two serpents, the hero is nude, with the exception of a cord which passes over the left shoulder, and from which hangs five bullæ.  
*R* **Σ-A.**, Lion's scalp, *wt.* 177.1 *grs.*, *this excessively rare piece is in very beautiful state.* 1

Salting

\* \* Northwick 1077.

Plate IV.

## CARIA.

1 7

197 **Myndus.** *AR* Drachm. Second century B.C., Head of Zeus, laureate, to right.  
*R* **ΜΥΝΔΑΙΩΝ.—ΠΙΓΟΝΟC.**, Head-dress of Isis, *wt.* 42 *grs.*, *fine and very rare.* 1

Ready

Plate IV.

3 4

198 **Calymna** (Insula). *Circa* B.C. 350-335. *AR* Didrachm. Young head in crested helmet, with cheek pieces.  
*R* **ΚΑΛΥΜΝΙΟΝ.**, Lyre within dotted square, *wt.* 100.8 *grs.*, *extremely fine and scarce.* 1  
 \* \* Thomas (2228) and Northwick (1126) collections.

—do—

7 15

199 **Cos** (Insula). *Circa* B.C. 400-300. *AR* Tetradrachm. Bearded head of Herakles, wearing lion's skin.  
*R* **ΚΩΙΟΝ.—ΑΡΚΕΤΙΩΝ.**, Crab; the whole in dotted square, *wt.* 226 *grs.*, *very fine.* 1

Rollin

## PHRYGIA.

19

200 **Cibyra.** *AR* Drachm. Helmeted male head to right, border of dots.  
*R* **ΚΙΒΥΡΑΤΩΝ.**, Galloping horseman with couched spear, *wt.* 48.5 *grs.*, *very fine and scarce.* 1  
 \* \* \* Northwick 1218.

O'Hagan

## PAMPHYLIA.

5

201 **Aspendus.** B.C. 400-300. *AR* Stater. Two wrestlers engaged.  
*R* **ΕΣΤΦΕΔΙΙΥΣ.**, A Slinger to right, in field triskelis, and eagle, the whole in square border of dots in shallow incuse, *wt.* 167.2 *grs.*, *fine.* 1

Lincoln



## DYNAST OF LYCIA.

*Rollin* 202 **Kubernis**, son of Kossicas. *Circa* B.C. 480. Fore-part of wild boar to right, on shoulder **KY**.

℞ Irregular incuse with > <, *wt.* 144 *grs.*, *fine and rare* (*Babelon*, p. 64, 432 *var.*). 1

*Plate IV.*

## CILICIA.

## KINGS AND SATRAPS.

*do* 203 **Syennesis IV.**? *Circa* 401 B.C. ℞ Stater. King on horse-back going to right, holding short sword.

℞ Legend wanting; nude figure of Greek hoplite kneeling right, with couched lance, behind large shield, which is ornamented with head of Medusa, *wt.* 161.5 *grs.*, *fine and rare*. (*Babelon*, pp. 17, 18, No. 141). 1

*Plate IV.*

*D'Hagan* 204 **Mazaios**. B.C. 361-333. ℞ Stater. כַּעְתָּר Baaltars seated to left, head and body facing, he holds in left hand a long sceptre, and in extended right hand an ear of corn and bunch of grapes, upon which is perched an eagle; under chair כ, and in the field to left ♠, the whole within dotted border.

℞ מַרְדֵי, Lion devouring a bull; beneath a spray of corn, the whole within plain border, *wt.* 166.5 *grs.*, *very fine and scarce*. (*Compare Babelon*, pl. v, nos. 9, 10, 11, and 12). 1

## KING OF GALATIA.

*do* 205 **Amyntas**. B.C. 36-25. ℞. Head of Pallas in crested helmet to right.

℞ ΒΑΣΙΛΕΩΣ ΑΜΥΝΤΟΥ., Nike advancing to left, carrying sceptre bound with diadem, *wt.* 21 *grs.*, *very fine and rare*. 1

*Plate IV.*

*Rollin* 206 **Amyntas**. B.C. 36-25. ℞ Tetradrachm. Head of Pallas as in preceding, but with monogram behind.

℞ ΒΑΣΙΛΕΩΣ ΑΜΥΝΤΟΥ., Nike advancing, carrying sceptre bound with diadem in field, left IB., *wt.* 243.5 *grs.*, *fine*. (*B. M. Guide*, pl. LX, no. V11). 1

## KING OF CAPPADOCIA.

- 11 207 **Ariarathes VII.** *Circa* B.C. 100.  $\mathcal{R}$  Tetradrachm (1st Type), Diademed Head of the king to right. *Rollin*
- $\mathcal{R}$  ΒΑΣΙΛΕΩΣ. ΑΡΙΑΡΑΘΟΥ. ΕΥΣΕΒΟΥΣ. [ΦΙΑ]  
ΟΠΑΤΟΡΟΣ. Α. (year 1), Pallas Nikephoros standing, *wt.*  
246 grs., *fine and rare.* 1
- \* \* Northwick, 1258.  
*Plate IV.*

## KINGS OF SYRIA.

- 8 208 **Antiochus II** (Theos). B.C. 261-246.  $\mathcal{R}$  Tetradrachm. *do*  
Head of Antiochus II to right, wearing diadem ornamented with a  
wing at side.
- $\mathcal{R}$  ΒΑΣΙΛΕΩΣ. ΑΝΤΙΟΧΟΥ., Apollo seated on Omphalos, hold-  
ing arrow in right hand, the left hand rests on a bow, in field to  
left monogram, in exergue a horse grazing and monogram (struck  
at Alexandria Troas), *wt.* 259 grs., *very fine.* (*Babelon, Rois de Syrie,*  
*p. 29.*) 1
- 10 10 209 **Antiochus III** (Magnus). B.C. 222-187.  $\mathcal{R}$  Tetradrachm, *Salting*  
Head of Antiochus III, diademed, to right.
- $\mathcal{R}$  ΒΑΣΙΛΕΩΣ. ΑΝΤΙΟΧΟΥ., Apollo seated on Omphalos, *wt.*  
264 grs., *extremely fine.* 1
- \* \* From the Dimsdale, Thomas (2532) and Northwick collec-  
tions (1289).  
*Plate IV.*
- 2 6 210 **Antiochus IV** (Theos Epiphanes). B.C. 175-164.  $\mathcal{R}$  Tetra- *Rollin*  
drachm. Diademed Head of Antiochus to right, within dotted  
border.
- $\mathcal{R}$  ΒΑΣΙΛΕΩΣ. ΑΝΤΙΟΧΟΥ., Apollo seated on Omphalos to  
left, in exergue IA and in the field, to left a branch and monogram,  
*wt.* 263 grs., *fine, but the obv. slightly double struck.* 1
- \* \* Northwick 1300.
- 2 15 211 **Antiochus IV** (Theos. Epiphanes). B.C. 175-164.  $\mathcal{R}$  Te- *do*  
tradrachm. Diademed Head of Antiochus, within fillet border.
- $\mathcal{R}$  ΒΑΣΙΛΕΩΣ. ΑΝΤΙΟΧΟΥ. ΘΕΟΥ. ΕΠΙΦΑΝΟΥ[Σ]., Zeus  
Nikephoros enthroned, in exergue, monogram, *wt.* 257 grs., *very*  
*fine.* 1
- \* \* Northwick, 1305.  
*Plate IV.*

*Rollin* 212 **Antiochus V** (Eupator). B.C. 164-162.  $\mathcal{R}$  Tetradrachm. Youthful Head of Antiochus V, diademed to right, within fillet border. 8

$\mathcal{R}$  ΒΑΣΙΛΕΩΣ. ΑΝΤΙΟΧΟΥ. ΕΥΠΑΤΟΡΟΣ., Zeus, semi-draped, seated to left, holding small statuette of Victory and spear; in field to left monogram. *wt.* 255.2 *grs.*, *very fine and rare.* 1

\* \* From the Thomas (2546) and Northwick collections (1312).

*Plate V.*

*D'Hagan* 213 **Demetrius I** (Soter). B.C. 162-150.  $\mathcal{R}$  Tetradrachm, Diademed Head of Demetrius, within fillet border. 1 5

$\mathcal{R}$  ΒΑΣΙΛΕΩΣ. ΔΗΜΗΤΡΙΟΥ. ΣΟΤΗΡΟΣ., Figure of Fortune seated to left, holding an arrow and cornucopia, in field to left, two monograms, and in the exergue the date, ΑΞΡ = 161, *wt.* 258 *grs.*, *fine.* 1

\* \* From the Thomas (2552) and Northwick collections (1317).

*do* 214 **Alexander I** (Bala). B.C. 150-145.  $\mathcal{R}$  Tetradrachm, draped Bust of Alexander, wearing broad diadem, to right, within dotted border. 4

$\mathcal{R}$  ΒΑΣΙΛΕ[ΩΣ]. ΑΛΕΞΑΝΔΡΟΥ., Eagle on prow, in front monogram of Tyre, and behind eagle, ΓΞΡ. = 163, and ΗΡ. monogram, *wt.* 219.7 *grs.*, *of exceedingly good work and fine.* 1

\* \* From the Thomas (2560) and Northwick collections (1322).

*Plate V.*

*Spink* 215 **Antiochus VI** (Dionysos). B.C. 145-142.  $\mathcal{R}$  Tetradrachm, Diademed and radiate Head of Antiochus VI to right, within fillet border. 5

$\mathcal{R}$  ΒΑΣΙΛΕΩΣ. ΑΝΤΙΟΧΟΥ. ΕΠΙΦΑΝΟΥΣ. ΔΙΟΝΥΣΟΥ., the Dioskuri on horseback, with couched lances, to left, beneath ΟΡ. = 170 in field to right, ΤΡΥ. monogram, and ΣΤΑ., the whole within border of lotus, ivy, &c., *wt.* 255, *in fair condition, rare.* 1

\* \* Northwick, 1334.

*Salting* 216 **Antiochus VII** (Evergetes). B.C. 138-129.  $\mathcal{R}$  Tetradrachm, draped and diademed Bust of Antiochus VII, to right, within dotted border. 7.7

$\mathcal{R}$  ΒΑΣΙΛΕΩΣ. ΑΝΤΙΟΧΟΥ., Eagle on prow, palm branch near right wing, in field to left, ΕΟΡ. = 175, with monogram, to right, ΣΙΔΩ., and aplustre (struck at Sidon), *wt.* 220 *grs.*, *very fine.* 1

\* \* From the Thomas (2657) and Northwick (1341) collections.

*Plate V.*

F

546. 3.

11 15

217 **Cleopatra, Thea, and Antiochus VIII** (Grypus) B.C. 127-121. AR Tetradrachm. Jugate Busts of Cleopatra diademed and veiled, and Antiochus diademed, to right, within dotted border.

Ready

℞ ΒΑΣΙΛΙΣΣΗΣ. ΚΛΕΟΠΑΤΡΑΣ. ΘΕΑΣ. ΚΑΙ. ΒΑΣΙΛΕΩΣ. ΑΝΤΙΟΧΟΥ., Zeus, semi-draped, seated to left, holding figure of Victory and long sceptre, monogram to left, and in exergue date ΘΠΡ.=189, wt. 260.1 grs., very fine and rare. 1

\* \* \* From the Collections of the Duke of Modena (counter-marked) and Lord Northwick (1352); this fine piece possesses an additional interest as being the identical coin described by Mionnet, *Supp. V*, p. 63, no. 323.

Plate V.

2 2

218 **Antiochus VIII** (Grypus). B.C. 125-96. AR Tetradrachm. Diademed Head of Antiochus Grypus within fillet border.

O'Hagan

℞ ΒΑΣΙΛΕΩΣ. ΑΝΤΙΟΧΟΥ. ΕΠΙΦΑΝΟΥΣ., semi-draped Figure of Zeus standing to left, head surmounted by a crescent, he holds in right hand a long spear, and in the left a star, in field right N. to left, IE. with A. below, the whole within laurel border, wt. 254 grs., very fine. 1

1

219 **Antiochus VIII** (Grypus). B.C. 125-96. AR Tetradrachm. Diademed Head of Antiochus VIII, to right, within fillet border.

do

℞ ΒΑΣΙΛΕΩΣ. ΑΝΤΙΟΧΟΥ. ΕΠΙΦΑΝΟΥΣ., Zeus seated on throne holding figure of Victory and long spear, monogram under throne and in field left, wt. 254.3 grs., fine. 1

15

220 **Antiochus VIII** (Grypus). B.C. 125-96. AR Tetradrachm. Diademed Head of King, as on preceding.

do

℞ Legend and type similar to last, but with Π. under throne, wt. 252 grs., fine. 1

KING OF ARMENIA.

3

221 **Tigranes I, the Great.** B.C. 97-56. AR Tetradrachm. Bust of Tigranes to right, wearing Armenian tiara and diadem, the tiara ornamented with two eagles, between them a star, the whole in fillet border.

do

℞ ΒΑΣΙΛΕΩΣ. ΤΙΓΡΑΝΟΥ., Tyche of Antioch seated, holding palm, the river Orontes swimming at her feet, in field AP. (mon.), wt. 245 grs., fine. 1

564. 15.

## PHOENICIA.

- 222 **Tyre.** *Circa* B.C. 450-332. *AR* Tetradrachm. Melkarth holding bow, and riding over the waves on a sea-horse, below a dolphin, border of dots.  
 ⚔ Owl with crook and flail, border of dots, *wt.* 211 *grs.*, *fine* 1

3 12 6

## JUDEÆA.

- 223 **Simon Maccabæus.** B.C. 143-135. *AR* Shekel. "*Shekel Israel,*" Cup or Chalice, with date above (year 2).  
 ⚔ "*Jerusalem Kedoshah,*" branch with three buds, *wt.* 209.2 *grs.*, *in fair state.* 1  
 \* \* Northwick, 1460.

3 12

- 224 **Simon Maccabæus.** B.C. 143-135. Half Shekel of the same year as the preceding, *wt.* 96 *grs.*, *in very good condition.* 1  
 225 Second Revolt. A.D. 132-135. *AR* (struck over a Roman denarius) Simon Barcochab, Bunch of grapes.  
 ⚔ *Lacheruth Jerusalem,* Palm branch, *wt.* 36 *grs.*, *fine and rare.* 1

2 16

3 3

## KING OF PERSIA.

- 226 **Darius I.** B.C. 521-485. *A* Daric, the King Darius half kneeling, to right, holding bow and long javelin.  
 ⚔ Irregular oblong incuse, *wt.* 129 *grs.*, *fine.* 1

3 3

## KING OF BACTRIA.

- 227 **Demetrius (son of Euthydemus).** *Circa* B.C. 187. *AR* Tetradrachm. Bust of the king draped, and wearing elephant's skin and diadem, dotted border.  
 ⚔ ΒΑΣΙΛΕΩΣ ΔΗΜΗΤΡΙΟΥ., Herakles standing, facing, with club and lion's skin, crowning himself, in field left monogram KP., *wt.* 261 *grs.*, *very fine and rare.* 1  
*Plate V.*

2 1

## EGYPT.

- 228 **Alexander IV.** B.C. 323-311. (Struck under Ptolemy I) *AR* Tetradrachm. Youthful Head of Alexander to right, wearing diadem and covered with elephant's skin.  
 ⚔ ΑΛΕΞΑΝΔΡΟΥ., Athena Alkis hurling thunderbolt, monogram to left in circle, and to right ΔΙ. and the Ptolemaic Eagle, *wt.* 237 *grs.*, *fine.* 1

2

- 10 229 **Ptolemy Soter.** B.C. 305-285. *N* Tetradrachm. Diademed Head of Soter to right.  
 ⚔ ΒΑΣΙΛΕ[ΩΣ]. ΠΤΟΛΕΜΑΙΟΥ., Eagle on thunderbolt, in field to Σ., wt. 275.5 grs., very fine. 1  
 \* \* Northwick  
 Plate V.
- 2 6 230 **Ptolemy Soter.** *N* Hemidrachm. Diademed Bust of Soter, ægis around neck.  
 ⚔ ΒΑΣΙΛΕΩΣ ΠΤΟΛΕΜΑΙΟΥ., Eagle on thunderbolt, in front ΜΙ. (mon.), wt. 27.1 grs., very fine. 1  
 Plate V.
- 2 4 231 **Ptolemy Soter.** *A* Tetradrachm. Diademed Head of Soter, Ægis knotted around neck to right, border of dots.  
 ⚔ ΒΑΣΙΛΕΩΣ. ΠΤΟΛΕΜΑΙΟΥ., Eagle on thunderbolt; in front Χ., wt. 229 grs., very fine. 1
- 15 232 **Ptolemy II** (Philadelphus). B.C. 285-244. *N* Octadrachm. ΑΔΕΛΦΩΝ., jugate Busts of Philadelphus and Arsinoe; behind, shield.  
 ⚔ ΘΕΩΝ., Deified Heads of Ptolemy Soter and Berenice, wt. 430 grs., very fine. 1
- 8 8 233 **Ptolemy II** (Philadelphus). B.C. 285-244. *N* Tetradrachm. ΑΔΕΛΦΩΝ., jugate Busts of Philadelphus and Arsinoe, as on the preceding.  
 ⚔ ΘΕΩΝ., jugate Busts of Ptolemy Soter and Berenice, wt. 215 grs., very fine. 1
- 13 15 234 **Arsinoe II** (wife of Ptolemy Philadelphus). *N* Octadrachm. Diademed and veiled Bust of Arsinoe to right; behind Κ.  
 ⚔ ΑΡΣΙΝΟΗΣ. ΦΙΛΑΔΕΛΦΟΥ., Double Cornucopia, with pendant, taenia, &c., wt. 427.1 grs., very fine. 1  
 \* \* From the Thomas (2846) and Northwick (1575) collections.
- 17 10 235 **Ptolemy III** (Energetes). B.C. 247-222. *N* Octadrachm. Radiate Bust of Energetes, wearing ægis, and with trident sceptre over his shoulder.  
 ⚔ ΒΑΣΙΛΕΩΣ. ΠΤΟΛΕΜΑΙΟΥ., Radiate cornucopiæ, in field ΔΙ., wt. 429.9 grs., very fine and scarce. 1  
 \* \* From the Thomas (2859) and Northwick (1519) collections.  
 Plate V.
- 15 236 **Berenice II.** Queen Consort of Egypt. B.C. 247-222. *N* Octadrachm. Veiled Bust of Berenice to right.  
 ⚔ ΒΕΡΕΝΙΚΗΣ. ΒΑΣΙΛΙΣΣΗΣ., single Cornucopiæ, with pendant taenia, wt. 429 grs., fine and very rare. 1  
 Plate V.

O'Hagan

Spink

Rollin

Spink

O'Hagan

do

do

do

Rollin

237 **Ptolemy V.** Epiphanes. B.C. 205-181.  $\mathcal{R}$  Tetradrachm.  
Draped and diademed Bust of the young Prince to right, a wheat  
ear on diadem.

⊕ [ΒΑΣΙΛΕ]ΩΣ. ΠΤΟΛΕΜΑΙΟΥ., Eagle on thunderbolt, be-  
tween legs **NI.** (struck at Marathus?), *wt.* 218.4 *grs.*, *very fine*  
*and scarce.* 1

\* \* \* From the Thomas (2946) and Northwick (1533) collections.

*Plate V.*

6 2 6

W. Hagan

238 **Ptolemy V.** Epiphanes. Diademed Bust, aegis around neck.

⊕ ΒΑΣΙΛΕΩΣ. ΠΤΟΛΕΜΑΙΟΥ., Eagle on thunderbolt,  
javelin at shoulder, in front **L. AZ.** = 37, and between **ΣΑ.**  
(Salamis), *wt.* 220 *grs.*, *very fine.* 1

Rollin

239 **Cleopatra I.** Regent. Minority of Philometor. B.C. 181-173.

$\mathcal{R}$  Tetradrachm. Jugate Busts of Serapis and Isis to right.  
⊕ ΒΑΣΙΛΕΩΣ ΠΤΟΛΕΜΑΙΟΥ., Eagle on thunderbolt; be-  
tween the legs **ΔΙ.**, and behind double cornucopiae, *wt.* 220 *grs.*,  
*very fine and rare.* 1

*Plate V.*

C. B.

240 **Cleopatra VII and Mark Antony.** B.C.

36-30.  $\mathcal{R}$  Tetradrachm. ΒΑΣΙΛΙΣΣΑ. ΚΛΕΟΠΑΤΡΑ.  
ΘΕΑ. ΝΕΩ[ΤΕΡΑ], draped and diademed Bust of Cleopatra,  
wearing necklace of pearls, &c.

⊕ ΑΝΤΩΝΙΟ. C. ΑΥΤΟΚΡΑΤΩΡ. ΤΡΙΤΟΝ. ΑΝΔΡ[ΩΝ.]  
Head of Antony to right, *wt.* 234 *grs.*, *in good state.* 1

*Plate V.*

### CYRENAÏCA.

Ready

241 **Cyrene?** B.C. 530-480.  $\mathcal{R}$  Didrachm, Female figure clad in long  
chiton confined at waist by cord, running to right, the head looking  
left, she carries in either hand a flower, the whole within plain  
border.

⊕ Quadripartite incuse square, *wt.* 132 *grs.*, *very fine and very rare.* 1

\* \* \* See Monsieur E. Babelon, *Rev. Num.* 1885, p. 395, *seq.*, and Dr. B.  
V. Head, *Num. Chron.* 3rd Series, vol. XI, p. 7, *seq.*

*Plate V.*

Rollin

242 **Cyrene.** 480-431.  $\mathcal{R}$  Tetradrachm, **ΚΥΡΑ.**, Head of Zeus  
Ammon, of early transitional style, within knurled border, in shallow  
circular incuse.

⊕ Silphium Plant, *wt.* 267.7 *grs.*, *very fine.* 1

\* \* \* From the Thomas (2955) and Northwick (1591) collections.

*Plate V.*

25 10

- 4 8 . 243 **Cyrene.** B.C. 431-321. *N* Stater. Blundered legend, victorious Quadriga driven by Kyrene, above star.  
 R NOIANANAQYK., Zeus Ammon enthroned; behind, an eagle, wt. 128.5 grs., in very good condition, but of barbarous style. 1
  
- 1 2 . 244 **Cyrene.** B.C. 431-321. *N* One-tenth of Stater. Head of Zeus Ammon to right.  
 R Thunderbolt between two stars, wt. 13.3 grs., fine. 1
  
- 11 . 245 **Cyrene.** B.C. 431-321. *N* One-tenth of Stater. KYΘ., young male head with ram's horn to right, in plain border.  
 R Head of Kyrene, the hair rolled to right, plain border, wt. 13.2 grs., fine. 1
  
- 51 . 246 **Barce.** *Circa* B.C. 431-321. *AR* Tetradrachm. AKE—ΣΙΟΣ., on either side of full-faced head of Zeus Ammon, the whole within triple border, composed of a beaded or dotted line between two plain lines.  
 B-A. arranged thus on either side of Silphium Plant, border of  
 R P-K. dots, wt. 199.4 grs., very fine and rare.  
 A-I.  
 \* \* From the Thomas (2949) and Northwick (1588) collections.

Plate V.

ZEUGITANA.

- 3 . 247 **Carthage.** B.C. 410-310. *AR* Tetradrachm. Fore-part of bridled Horse to right, crowned by Victory flying above, in front corn grain, and below Punic legend.  
 R Date-palm tree, traces of Punic legend, wt. 266 grs., in fair condition. 1
  
- 2 4 . 248 **Carthage.** B.C. 400-336. *AR* Tetradrachm. Head of Persephone to left, wearing triple earring, necklace and wreath of corn leaves; around, four dophins.  
 R Punic legend, Bust of Horse, with palm tree behind, wt. 268 grs., fine. 1
  
- 8 2 6 249 **Carthage.** B.C. 400-336. *AR* Tetradrachm. Head of Persephone, as on the preceding piece, but of rather more careful work.  
 R Bust of Horse, legend and palm tree, as on no. 248; wt. 264 grs., very fine. 1

Plate V.

O'Hagan

—do—

Seltn ar

Rollin

Iran

O'Hagan

Rollin



Rollin

250 **Carthage.** B.C. 400-336. AR Tetradrachm. Head of Persephone (very closely copied from the coins of Euainetos), wearing triple earring, necklace and wreath of corn leaves; around, four dolphins.

℞ Horse standing to right before palm tree, a small flower springing from ground under horse, *wt.* 250.5 grs., *very fine and of fine style.* 1

Plate V.

10 10 .

Spink

251 **Carthage.** B.C. 336-280. AR Tetradrachm. Head of the Tyrian Herakles Melkarth, in lion's skin to right.

℞ Punic legend below bust of horse to left, behind a date palm, *wt.* 251 grs., *very fine and of fine bold style.* 1

3 18 .

Lincoln

252 **Carthage.** B.C. 340-242. El. Stater. Head of Persephone to left, wearing earring and necklace with pendants, and corn wreath in hair.

℞ Horse standing to right, *wt.* 115 grs., *fine* 1

1 2 .

Rollin

253 **Carthage.** B.C. 241-218. AR Dekadrachm. Head of Persephone to left wearing earring and wreath of corn.

℞ Punic legend beneath Pegasus to right, *wt.* 566 grs., *very fine and very rare* 1

Plate V.

2 4 10 .

Lincoln

254 **Various.** Velia Didrachm, *poor.* Demetrius Poliorcetes Hemidrachm, Victory on prow, *rev.* Poseidon hurling trident.

**Athens Tetradrachm.** B.C. 527-430; a **Stater** of Aegina. *Circa* B.C. 700. With two counter-marks.

**Drachm** of the Achæan league; and an **Obol** of Tyre, sea-horse with dolphin beneath.

℞ Owl with crook and flail. 6

16 .

## ROMAN AND BYZANTINE A.

O'Hagan

255 **Julian II,** Emperor. A.D. 360-363. Solidus, FL. CL. IVLIANVS. PF. AVG., Bust draped and wearing cuirass, to right.

℞ VIRTVS. EXERCITVS. ROMANORVM., Emperor in military costume, helmeted, carrying a trophy, and dragging by the hair a captive; in exergue ANT. Γ. (*Cohen, 2nd ed. no. 79*), *fine, but pierced behind head.* 1

1 2 .

872. 10. 16

- 2 . 256 **Pulcheria** (wife of Marcianus.) A.D. 414-453. Solidus, AEL. *Lincoln*  
 PVLCHERIA. AVG., Draped and diademed bust of Pulcheria to right,  
 crowned by a hand from above.  
 R VOT XX. MVLT. XXX. e., Victory holding long cross, in exergue,  
 CONOB. (*Sabatier*, no. 4), *fine but pierced below bust, rare.* 1
- 18 . 257 **Basil I and Constantine IX.** A.D. 869-870. *O'Hagan*  
 Solidus. BASILIOS. ET. CONSTANS. AVGG., Diademed busts, facing,  
 of Basil and Constantin holding between them a long Greek cross.  
 R IHS. XPS. REX. REGNANTIVM., Christ seated holding the Gospels  
 (*Sabatier*, 5), *fine.* 1
- 2 2 . 258 **Theodora.** A.D. 1055-1066. Solidus (of thin flat fabric), *Rollin*  
 ΘΕΟΔΟΡΑ. ΑΥΓΟΥΣΤΑ., The B. Virgin and Theodora  
 standing, facing, and holding labarum between them.  
 R IHS. XIS. REX. REGNANTIVM., Christ standing holding the Gospels  
 (*Sabatier* 1), *very fine and rare.* 1

## ENGLAND.

- 2 2 . 259 **Henry VIII.** Half Crown (*Rul.* v, 8), *obr. double struck.* *Smith*  
 R *good.*
- James I.** Sovereign, *m. m.* lis, bust in ornamented armour.  
 R FACIAM. EOS. &c. *good*; and a Quarter Guinea, George I, *fine.* 3
- 4 15 . 260 **Anne.** 1702-1714. Two Guinea Piece, ANNA. DEL. GRATIA., *O'Hagan*  
 Draped and diademed bust of Anne to left.  
 R MAG. BRI. FR. &c., Four crowned Shields cruciformly arranged,  
 garter in centre, and sceptres in the angles; date 1711, *in good con-*  
*dition.*
- William and Mary.** 1688-1694. Guinea, GVLIELMVS.  
 ET. MARIA. DEL. GRATIA., Jugate busts of William and Mary to right.  
 R MAG. BR. PR. &c., Shield of Arms with crown over, dividing date  
 1691, *fine.* 2
- 2 12 . 261 **George III.** 1760-1820. Pattern guinea (probably by pupil *Lincoln*  
 of Yeo), GEORGIVS III. DEI GRATIA, Laureate bust of George III,  
 hair in long curls descending below truncation.  
 R M. B. F. ET. H. REX, &c., Garnished shield, crowned, date 1774, edge  
 plain, *very fine.* 1

## FRANCE.

<i>O'Hagan</i>	262	<b>Louis I.</b> 781. Solidus, DILVVDVI. . AVG., Laureate bust to right. R LVIMHIDVNVN., Cross within wreaths, <i>scarce</i> .	1	2	2
<i>do</i>	263	<b>Philip VI.</b> Ecu d'Or, + PHILIPPVS DEI. GRA. FRANCORVM REX. King seated on Gothic chair of State, holding sword and shield. R XPC. IMPERAT., Floreate cross within quatrefoil, &c., <i>Hoff Pl. xvi. 3, fine</i> .	1	15	
<i>Rollin</i>	264	<b>Louis XVI.</b> Double Louis d'Or, by Duvivier, LVD. XVI. D. G. FR. ET. NAV. REX., Bust to left. R CHRS. REGN. VINC. IMPER., 1786, Conjoined shields of France and Navarre under crown; below A., struck at Paris, <i>very fine</i> , and a "Louis" of same type and mintage, dated 1785 ( <i>Hoff, Pl. cxviii., 5 and 6</i> ).	2	10	

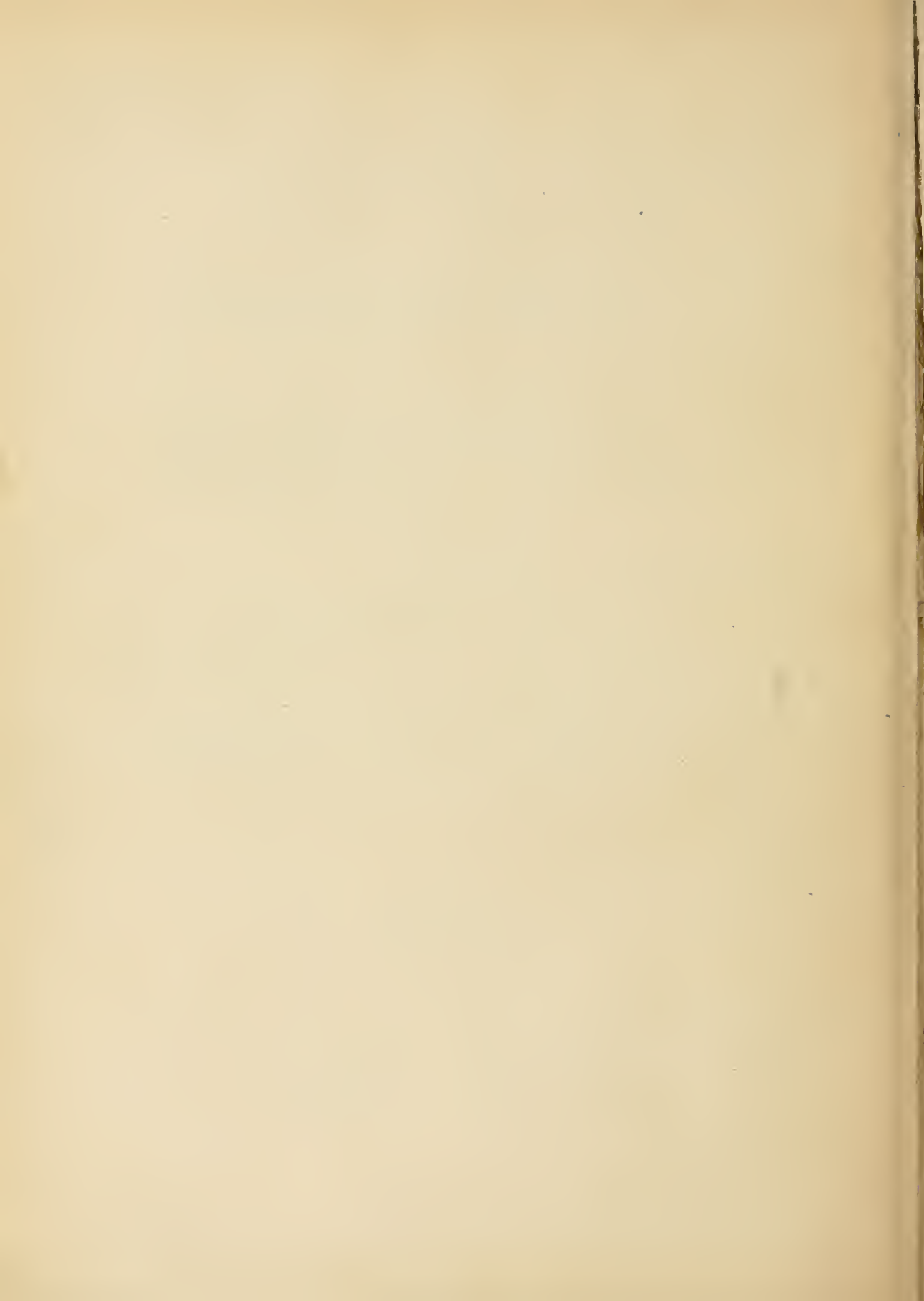
## PORTUGAL, &amp;c.

<i>C.B.</i>	265	<b>John V.</b> Piece of 20,000 Reis ( <i>N</i> ). IOANNES. V. D. G. PORT. ET. ALG. REX., Arms under crown, value at side, &c. R IN. HOC. SIGNO. VINCES., Cross with M. in each angle, <i>fine</i> .	1	7	15
<i>Ready</i>	266	<b>Oriental.</b> Dinars, two, Half sequin of Turkey, 1223 A. H., and a quarter sequin, same date, &c.	5	2	1
<i>O'Hagan</i>	267	<b>Lysimachus</b> of Thrace. Tetradrachm, in gold, <i>false</i> , cast in gold of drachm of Lampsacus, <i>false</i> , <i>N</i> Stater of Athens, R of Lycia, <i>false</i> , &c.	5	7	5

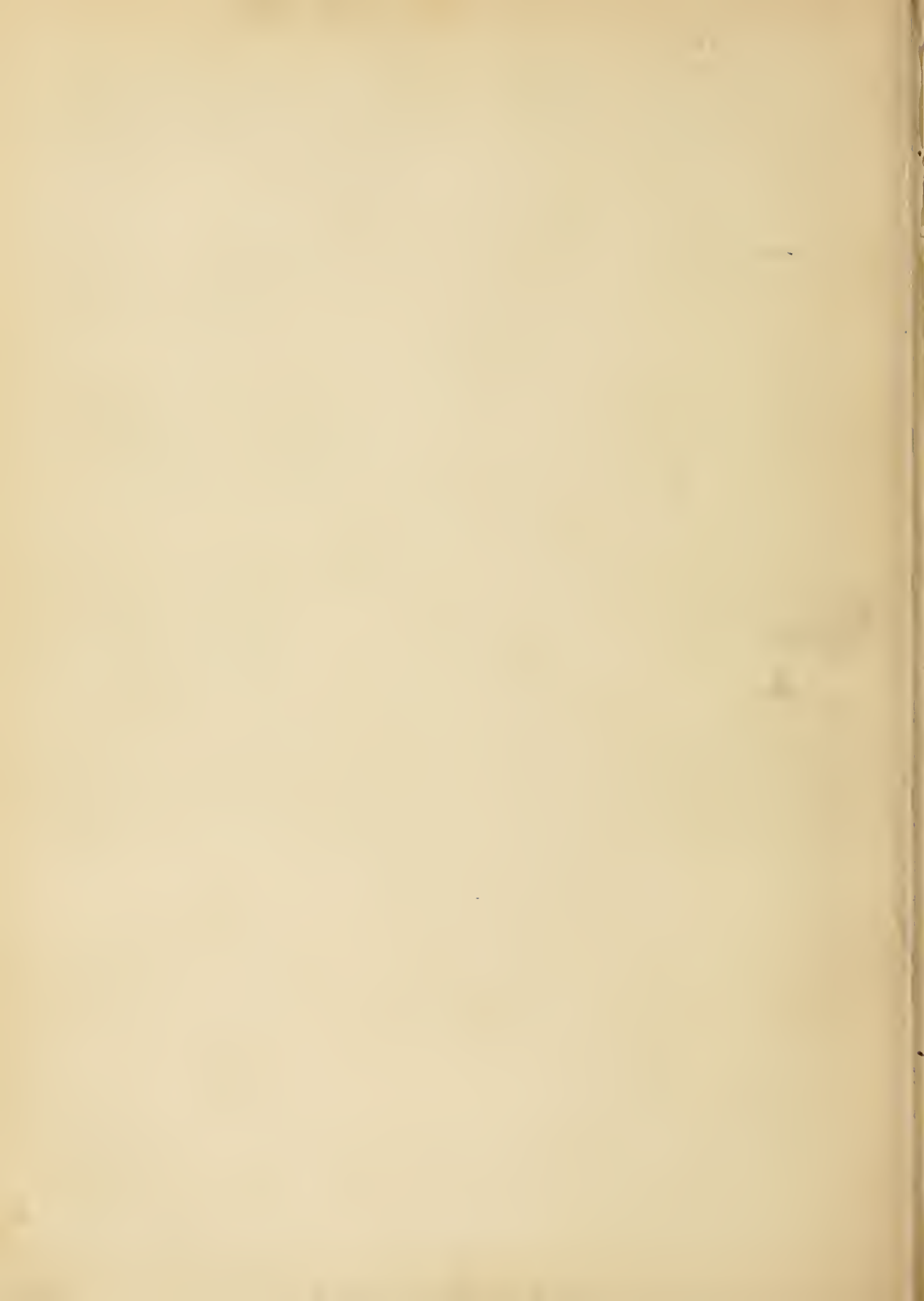
£909. 7. 6

END OF SALE.

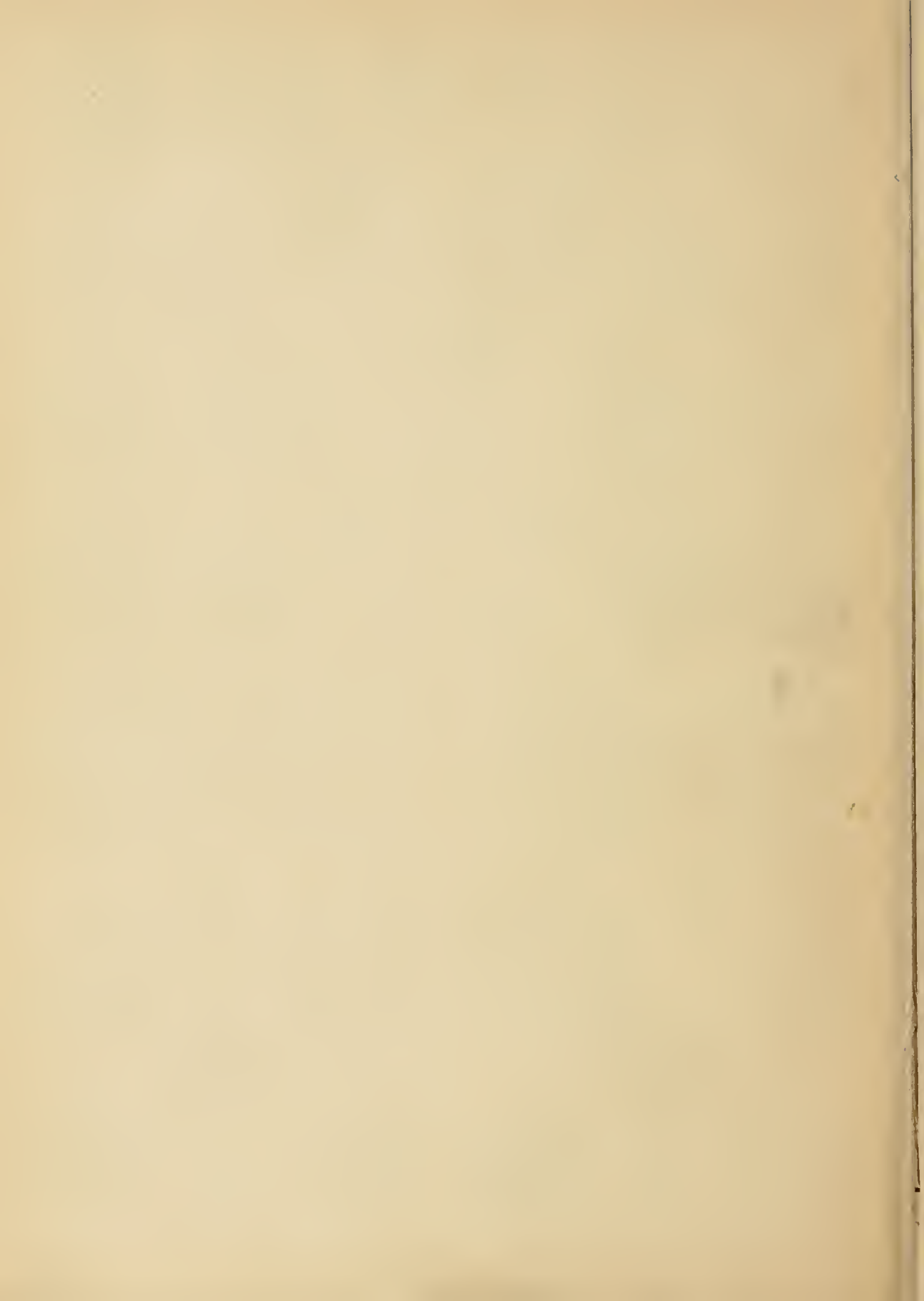
Total of Sale £3736.1. -



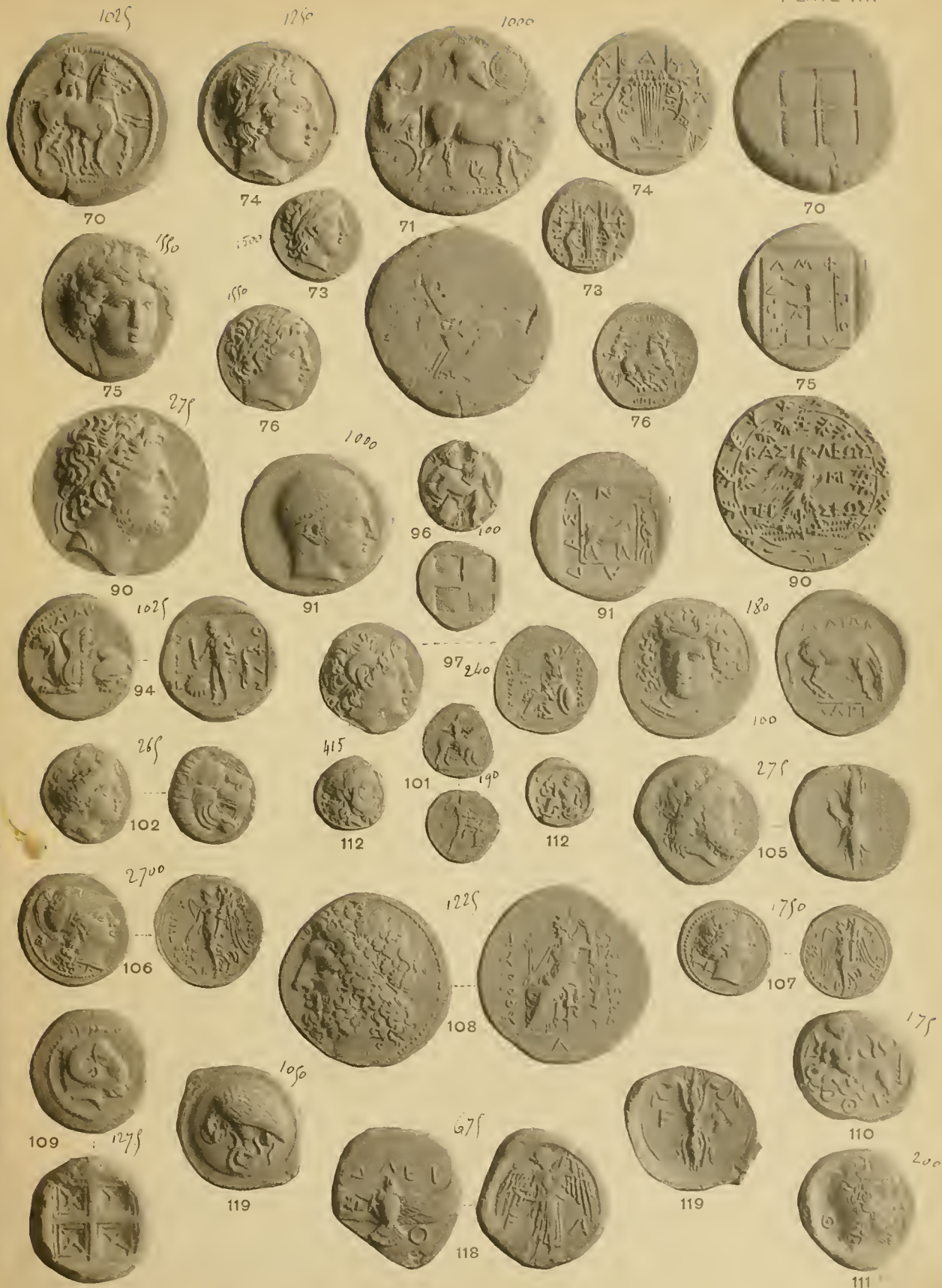


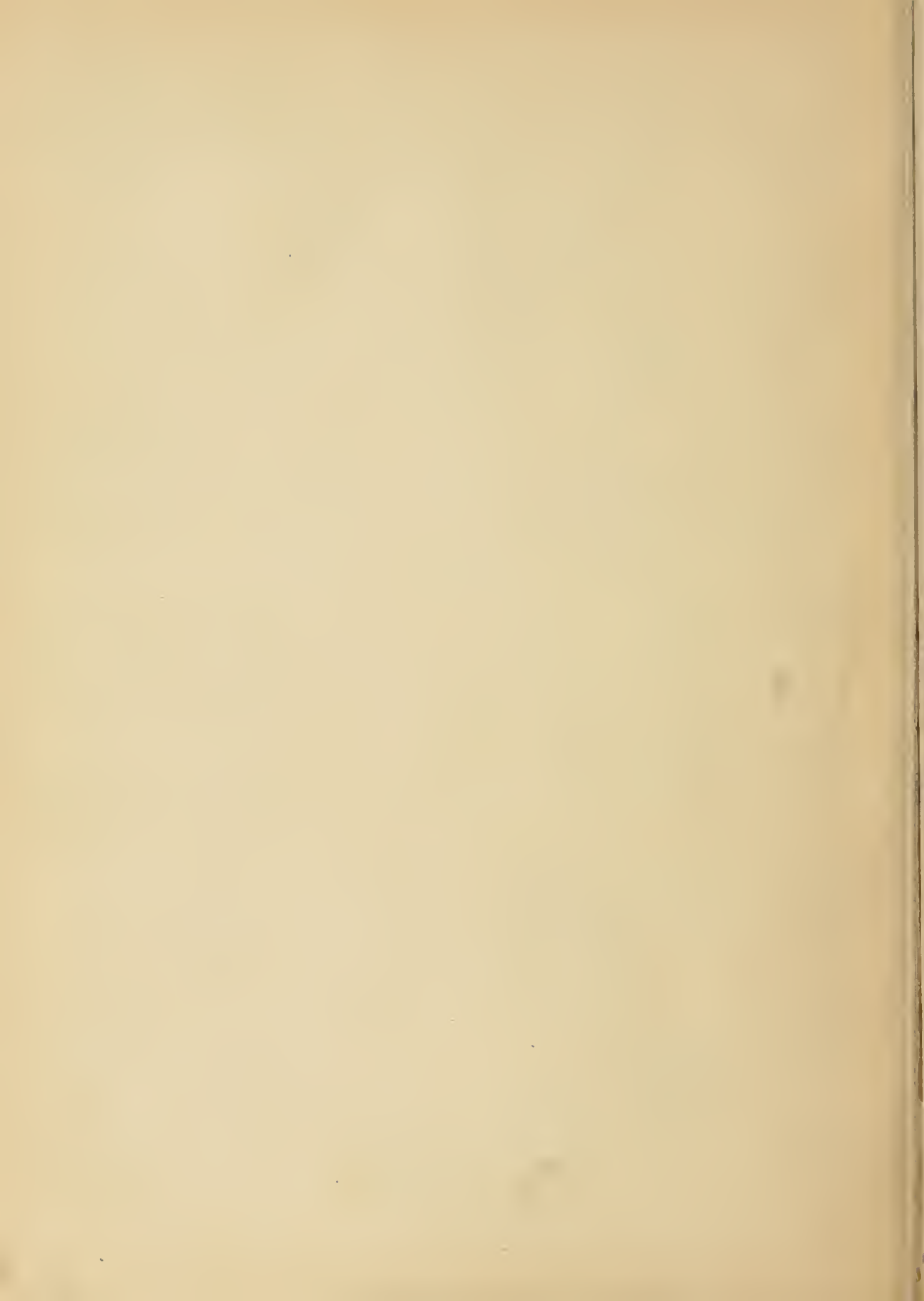






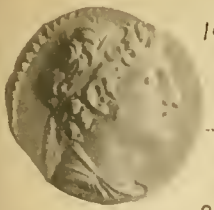












100

214



212

200



200

216



250

229



217

300



217



229



235

430



227

525



236

375



227



237

160



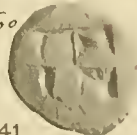
150

240



241

80



315

239



635

242



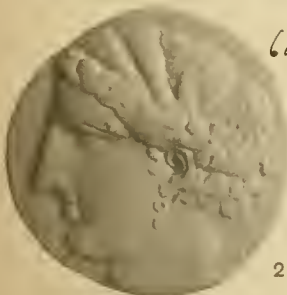
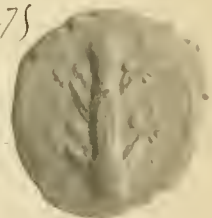
230

205



1275

246



253



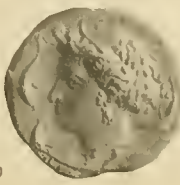
249



260

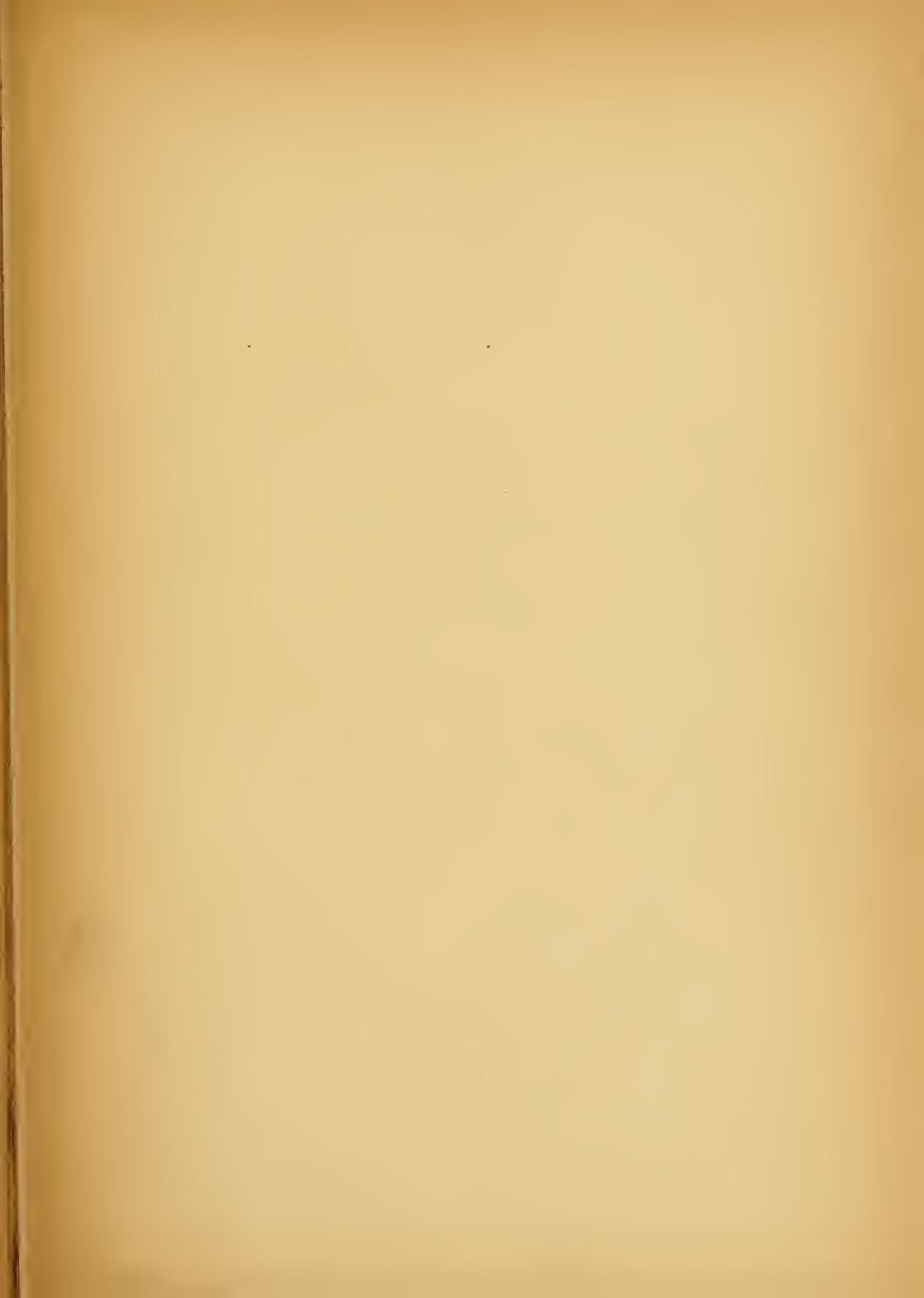


250



253















UNIVERSITY OF CALIFORNIA LIBRARY

Los Angeles

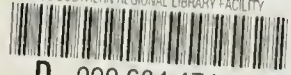
This book is DUE on the last date stamped below.

---

--	--	--

41584

UC SOUTHERN REGIONAL LIBRARY FACILITY



D 000 684 474 0

