

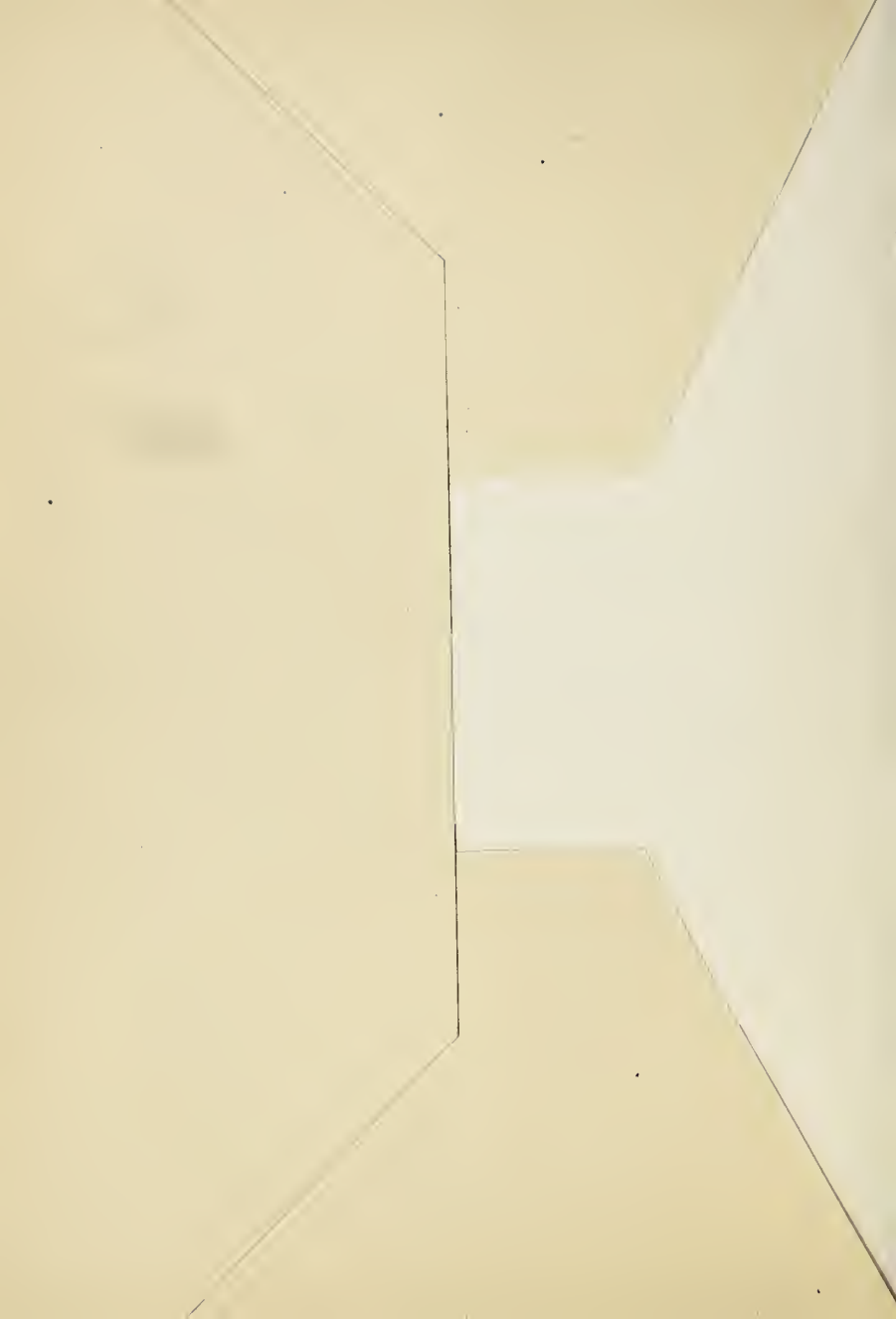
THE PRIVATE COLLECTION

OF

THE WELL-KNOWN CONNOISSEUR

MR. EDWARD RUNGE

TO BE SOLD UNDER THE MANAGEMENT OF
THE AMERICAN ART ASSOCIATION
NEW YORK



Mar. 24/14

Compliments
of N. A. Lanthier
From
Clapp Graham

ON FREE PUBLIC VIEW
FROM 9 A. M. UNTIL 6 P. M.
AT THE AMERICAN ART GALLERIES
MADISON SQUARE SOUTH
FROM TUESDAY, MARCH 3rd, 1914
UNTIL THE MORNING OF THE DATE OF SALE

THE PRIVATE COLLECTION
OF
THE WELL-KNOWN CONNOISSEUR
MR. EDWARD RUNGE

TO BE SOLD
AT UNRESTRICTED PUBLIC SALE
AT THE AMERICAN ART GALLERIES
ON SATURDAY AFTERNOON, MARCH 7th, 1914
BEGINNING AT 3 O'CLOCK

ILLUSTRATED CATALOGUE
OF THE
BEAUTIFUL OLD CHINESE
PORCELAINS

AND OTHER ORIENTAL OBJECTS

FORMING

THE PRIVATE COLLECTION

OF

THE WELL-KNOWN CONNOISSEUR

MR. EDWARD RUNGE

FOR OVER TWENTY YEARS REPRESENTATIVE IN CHINA OF
MR. THOMAS B. CLARKE

TO BE SOLD AT UNRESTRICTED PUBLIC SALE

ON THE DATE HEREIN STATED


THE SALE WILL BE CONDUCTED BY

MR. THOMAS E. KIRBY

OF THE

AMERICAN ART ASSOCIATION, MANAGERS
NEW YORK

1914



Digitized by the Internet Archive
in 2017 with funding from
Duke University Libraries

PREFATORY NOTE

The porcelains here catalogued are the last importations made by Mr. Edward Runge, purchased by him in China, where he has long been known as a veteran seeker of these distinctive productions of ancient Cathay. Originally he was there for Herter Brothers, who are well known to New York; later for twenty years or more on behalf of and in connection with Mr. Thomas B. Clarke of this city, known even more widely as a collector of works of art than as a dealer for many years particularly in Oriental porcelains. Mr. Runge's health has led him to retire from activity in this absorbing pursuit. Much the greater proportion of the objects making up the collection have stands.

CONDITIONS OF SALE

1. **Any bid** which is merely a nominal or fractional advance may be rejected by the auctioneer, if, in his judgment, such bid would be likely to affect the sale injuriously.

2. **The highest bidder** shall be the buyer, and if any dispute arise between two or more bidders, the auctioneer shall either decide the same or put up for re-sale the lot so in dispute.

3. **Payment** shall be made of all or such part of the purchase money as may be required, and the names and addresses of the purchasers shall be given immediately on the sale of every lot, in default of which the lot so purchased shall be immediately put up again and re-sold.

Payment of that part of the purchase money not made at the time of sale shall be made within ten days thereafter, in default of which the undersigned may either continue to hold the lots at the risk of the purchaser and take such action as may be necessary for the enforcement of the sale, or may at public or private sale, and without other than this notice, re-sell the lots for the benefit of such purchaser, and the deficiency (if any) arising from such re-sale shall be a charge against such purchaser.

4. **Delivery** of any purchase will be made only upon payment of the total amount due for all purchases at the sale.

Deliveries will be made on sales days between the hours of 9 A. M. and 1 P. M., and on other days—except holidays—between the hours of 9 A. M. and 5 P. M.

Delivery of any purchase will be made only at the American Art Galleries, or other place of sale, as the case may be, and only on presenting the bill of purchase.

Delivery may be made, at the discretion of the Association, of any purchase during the session of the sale at which it was sold.

5. **Shipping**, boxing or wrapping of purchases is a business in which the Association is in no wise engaged, and will not be performed by the Association for purchasers. The Association will, however, afford to purchasers every facility for employing at current and reasonable rates carriers and packers; doing so, however, without any assumption of responsibility on its part for the acts and charges of the parties engaged for such service.

6. **Storage** of any purchase shall be at the sole risk of the purchaser. Title passes upon the fall of the auctioneer's hammer, and thereafter, while the Association will exercise due caution in caring for and delivering such purchase, it will not hold itself responsible if such purchase be lost, stolen, damaged or destroyed.

Storage charges will be made upon all purchases not removed within ten days from the date of the sale thereof.

7. **Guarantee** is not made either by the owner or the Association of the correctness of the description, genuineness or authenticity of any lot, and no sale will be set aside on account of any incorrectness, error of cataloguing, or any imperfection not noted. Every lot is on public exhibition one or more days prior to its sale, after which it is sold "as is" and without recourse.

The Association exercises great care to catalogue every lot correctly, and will give consideration to the opinion of any trustworthy expert to the effect that any lot has been incorrectly catalogued, and, in its judgment, may either sell the lot as catalogued or make mention of the opinion of such expert, who thereby would become responsible for such damage as might result were his opinion without proper foundation.

SPECIAL NOTICE

Buying or bidding by the Association for responsible parties on orders transmitted to it by mail, telegraph or telephone, will be faithfully attended to without charge or commission. Any purchase so made will be subject to the above Conditions of Sale, which cannot in any manner be modified. The Association, however, in the event of making a purchase of a lot consisting of one or more books for a purchaser who has not, through himself or his agent, been present at the exhibition or sale, will permit such lot to be returned within ten days from the date of sale, and the purchase money will be returned, if the lot in any material manner differs from its catalogue description.

Orders for execution by the Association should be written and given with such plainness as to leave no room for misunderstanding. Not only should the lot number be given, but also the title, and bids should be stated to be so much *for the lot*, and when the lot consists of one or more volumes of books or objects of art, the bid per *volume* or *piece* should also be stated. If the one transmitting the order is unknown to the Association, a deposit should be sent or reference submitted. Shipping directions should also be given.

Priced copies of the catalogue of any sale, or any session thereof, will be furnished by the Association at a reasonable charge.

AMERICAN ART ASSOCIATION,
American Art Galleries,
Madison Square South,
New York City.

CATALOGUE



AFTERNOON SALE

SATURDAY, MARCH 7, 1914

AT THE

AMERICAN ART GALLERIES

BEGINNING AT 3.00 O'CLOCK

Which includes Catalogue Nos. 1 to 137

SINGLE-COLOR PORCELAINS OF MINIATURE SIZES

1—DEEP-GREEN BOTTLE (*Ch'ien-lung*)

15 →
Pear-shape, on short circular foot, with full, short neck. Dense white porcelain, covered with a deep green glaze of rich color-quality and dull luster, with a delicate crackle. Rim glazed in black.

2—LIGHT-BROWN BOTTLE (*Ch'ien-lung*)

10 ←
Globular, with retreating foot and short, straight neck. Delicate, light porcelain, covered with a glaze of smooth but unreflecting surface, in light brown hue as of lightly stained and well-smoothed wood, splashed delicately with light yellow and golden-brown, the glaze on the foot deepening to a dark brown.

3—MILK-WHITE SMALL PEAR-SHAPED BOTTLE
(*Ch'ien-lung*)

20 — With tapering, slender neck and short, circular foot. Pure white, heavy porcelain, covered with a rich milk-white glaze of delectable quality.

Height, 4½ inches.

4—MUSTARD-YELLOW MINIATURE BALUSTER
VASE (*Ch'ien-lung*)

500 — Bulbous body, tapering to a wide neck expanding at the lip. Light mustard-yellow glaze of greenish tinge, having a fish-roe crackle. Interior of neck glazed in dark green, with a faint crackle.

5—BROWNISH-BLACK MINIATURE PEAR-SHAPED
BOTTLE (*Ch'ien-lung*)

250 — With flat foot, recessed underneath, and short neck. Brilliant brownish-black glaze, with delicate hair-line splashings or sprinklings of a faint brown or bronze tone, giving the vessel a curiously mottled and somewhat metallic effect.

6—TEA-DUST JAR

7 3 2
Ovoid body, with flat foot recessed underneath, short sloping shoulder and full, wide, straight neck. Coated with a thick glaze of unctuous surface and dull luster in the hue and of the appearance of powdered tea. Underneath the brown-glazed foot a seal.

Height, 3 inches.

7—MIRROR-BLACK BOTTLE (*Ch'ien-lung*)

12 5 2
Ovoid, with narrow foot and steeply-sloping shoulder, and graceful neck gently expanding. Covered with a pure, brilliant glaze in mirror-black of lustrous depths; rim and under-foot glazed in white.

Height, 3 inches.

8—PORCELAIN SNUFF BOTTLE (*Ch'ien-lung*)

30 2
In flask shape on a narrow foot. Pure white porcelain, dense and thick, deeply carved and intricately modeled with a fungus reticulation or open coral formation, overlain by foliate scrolls and the eight Buddhistic emblems of happy augury, the whole glazed in a bright vermilion. At base and shoulder a scepter-head border, modeled and incised; on the neck a border of key-fret, and beneath the lip a circlet of miniature bosses.

Height, 3 inches.

9—PEACOCK-BLUE BOTTLE (*Ch'ien-lung*)

20" — Ovoidal with tubular neck; deeply recessed foot. Luminous glaze of turquoise-blue and turquoise-green, with mottlings and shifting color presenting in places the peculiar sheen of peacock-blue. A fine crackle over the entire surface.

Height, 4 inches.

10—MUSTARD-YELLOW VASE (*Ch'ien-lung*)

25" — Ovoidal, with high, sloping shoulder, short neck and broadly flaring lip. Glazed in a bright mustard-yellow having a fine crackle with a notable uniformity of distribution. Soft, dull luster with delicate metallic suggestions.

Height, 4 inches.

MINIATURE JADE ORNAMENTS

(All with Stands)

11—JADE CARVING OF TWO ANIMALS

10" — Two animals, apparently of the cat family or foxes, are carved in the round, in a single piece of two-color jade, the one in opaque white jade and the other in jade of steel-black hue, and are represented as foot-to-foot—except that a sprig of the sacred fungus lies between them a part of the way—and they are facing in opposite directions.

12—CARVED JADE ORNAMENT: FOX AND GRAPES

10 "—
In two-color jade. Not necessarily the classic fable, but a representation of a bushy-tailed animal with a rodent's head, carved in semi-translucent white jade, perched upon a bunch of large grapes, which is carved in bold relief and undercut in a gray-black jade, a vein of the white which continues in the black section being utilized to counterfeit the stem.

13—JADE ORNAMENT OF AQUATIC LIFE

70 "—
Two fish-dragons are carved in black jade, undercut and pierced, overlying a stratum of translucent gray jade which is carved in representation of lotus leaves with a lotus seed-pod, and a twisted shell; the tails of the fish-monsters etched in fine lines.

14—JADE BIRD AND FRUIT

65 "—
A thin slab of jade, two-thirds of it black, the other third a translucent white jade, is carefully carved, the black jade with a cluster of tree fruits on a stem, much in the form of the Chinese pointed peach of longevity, carved "in the round" but flattened; the white portion is carved in representation of a long-billed web-footed bird, its feathers finely etched. A recurring touch of the black stone is utilized for the carving of a blossom resting in relief on the bird's back.

15—JADE CAT AND RAT

22⁵⁰ Carved in the round and undercut, touching only at feet, tails and nose, the rat carved in lustrous steel-black jade and the cat in the contiguous stratum of translucent white jade, each with a soft polish. On the back of the cat's neck a fungus branch is carved in low relief, pierced and etched.

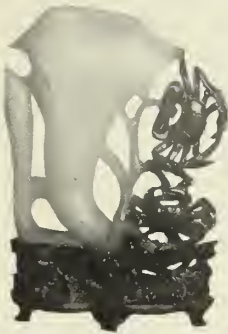
16—JADE ORNAMENT: TWO TIGERS

25⁰⁰ Carved in a single piece of black and white jade, each animal having its head turned sidewise against one shoulder and resting on the hind feet of the other; one carved in the black jade and one in the white, and done in the round, the stone being cut away between the bodies. Bright polish.

17—JADE ANIMAL AND FIGURE GROUP

30⁰⁰ In mottled jade. A sturdy, robust figure of the sacred cow, in squatting attitude, is carved in detail in the round in stone of a light chocolate-brown, the feet, legs and tail mottled with gray, as is the middle of the back. Mounted over the white spot of the back, carved in bold relief and undercutting in a sprawling attitude in translucent white jade is a laughing figure who controls the cow by a rope and supports on his shoulder a large hat in brown. Brilliant polish.

18—BLACK AND WHITE JADE FLOWER-HOLDER



A deep, cornucopia-shaped blossom, with an elongated bud on one side and a stem of leaves on the other—a conventionalized lotus or other aquatic plant—is carved in upright position in translucent white jade. In an adjoining vein of black jade appear two crabs, carved, pierced and undercut, each grasping in its claws a stem of the plant beside it. The white jade has a soft polish, the black a mirror surface.

Height, 3¼ inches.

JADE, CRYSTAL, GLASS, AGATE AND AMBER
SNUFF BOTTLES

(Each with Stand)

19—HAIR CRYSTAL SNUFF BOTTLE

12 32

Flattened, with ovate contour. Transparent crystal delicately clouded, and veined with dark hair-lines or vagrant striations. At either side a rudimentary archaic animal-head-and-loop handle carved in relief. Green jade stopper.

20—HAIR CRYSTAL SNUFF BOTTLE

2 57
Broad flask-shape. Clear transparent crystal, with a bold, vagarious, internal "hatch" of light but firm lines, and brilliant fracture. Unadorned save for the brilliant polish. Pink coral and green stopper.

21—HAIR CRYSTAL SNUFF BOTTLE

0 "
Miniature flask shape; transparent, exhibiting an intricate "cross-hatch" in its interior structure, in black lines. Brilliantly polished. Pink coral and blue stopper.

22—AQUAMARINE SNUFF BOTTLE

2 750
Light blue, turning to pale green against the light; transparency blocked by structural variations and cleavages. Carved in gourd shape—vine and fruit—brightly polished, and the veinings of the leaves delicately etched. Pink stopper.

23—JADE SNUFF BOTTLE

7 50
Flask-shape, on elliptical foot. Semi-transparent white jade, with a broad diagonal shading of gray-black from one shoulder to foot; one face lightly carved in the center with a group of rocky cliffs. Pink coral stopper.

24—JADE SNUFF BOTTLE

250
Flattened ovoidal flask-shape, with narrow foot lightly defined, the body ribbed as a melon, and having a deep cylindrical neck. One face of the bottle, and more than half its substance, clouded-gray jade; the other face and remainder mottled with reddish and light brown in the hues of iron corrosion. Green stopper.

25—MOTTLED JADE SNUFF BOTTLE

1300
Flat, the sides slightly ovoidal. Black and smoky-gray jade mottled with lighter grays, and encircled by a narrow belt or vein of gray-white which runs through the structure. Bright pink stopper.

26—AGATE SNUFF BOTTLE

250
Flattened flask-shape, very thin, with sloping shoulder and short neck and well-defined elliptical foot. Translucent agate of a light, liquid brown tone, crossed by an undulating band of dark brown, pale yellow and white strata about midway of its height.

27—RARE AGATE SNUFF JAR



Ovoidal, broad, and of very deep body, the back also of ovoid curvature, the front less pronouncedly so owing to a richly carved relief ornamentation. The substantial, dignified body is of brown agate of various rich, dark tones, mottled with wandering black strata and smoothly polished, with a mirror-surface. A stratum

of yellow, in the hues of old-fashioned molasses candy, covering the face, is carved in relief with a Taoist immortal under a pine tree—possibly Lan Ts'ai-ho with fruit instead of flowers in the basket, or perhaps Hsi Wang Mu with two of her peaches of longevity—and is polished to the brilliancy of the brightest porcelain glaze.

Height, $3\frac{1}{4}$ inches; width, $2\frac{3}{4}$ inches; depth, $2\frac{1}{4}$ inches.

28—BROWN AGATE SNUFF BOTTLE

In fat flask-shape. Dense dark brown agate with a smooth polish of mirror quality. Green stopper carved with a border of bats encircling a Shou medallion—emblematic of long life and happiness.

250

29—AMBER-MATRIX SNUFF BOTTLE

220^z Of ovate contour and irregular surface, somewhat like a partially pressed fig; the mass a light yellow-brown streaked and mottled with dark rich chestnut browns. Smooth, soft polish, the surface carrying a very delicate, scarcely visible tracery of landscape in hair-line engraving. *Fei-ts'ui* stopper.

30—CLOUDED AMBER SNUFF BOTTLE

70^z Flattened flask-shape fashioned of a single block of beautifully clouded amber, pale bright yellow of sundry mottlings, opaque throughout and brilliantly polished.

31—GRAY JADE MINIATURE VASE

250^z Baluster-shape, with a carved oval base, recessed and undercut, on four short feet; contracted neck and lightly spreading lip; cow's-head ornaments or rudimentary handles carved in low relief on the shoulders. Rare, translucent pearl-gray jade, beautifully mottled, with an occasional seal-brown "tiger-stripe" visible at the base. Four-character incised inscription on the face.

32—MOTTLED JADE SNUFF BOTTLE

12⁵⁰ In the form of an ovoidal jar slightly flattened, with blunt shoulder, short cylindrical neck and low elliptical foot; ornamented animal-head and ring shoulder-handles carved in relief. Yellow-brown, chestnut-brown and gray streaked and mottled jade, with brilliant polish; a vein of pure white stone adjacent on the obverse carved with a *mei* tree in blossom. The reverse is occupied by an incised inscription.

33—MOTTLED JADE ORNAMENT

22⁵⁰ A curious piece of stone which is mottled in a semi-liquid, soft blue-gray, a denser gray, an iron-rust brown and a darker, richer brown, with various seal-brown fleckings—and again taking a milky-opalescent hue—and is carved in the form of a peach of longevity standing upright on its curled stem, with several leaves clinging to its body. Incised inscription in four characters.

34—WHITE AND YELLOW JADE SNUFF BOTTLE

12⁵⁰ Ovate on flat foot, with flattened shoulder and short cylindrical neck. White jade with the palest of green flecks on the back, a brighter one at the side of the face—the latter utilized in a delicate carving of a pine tree. Overlying the face is a vein

of yellow jade in which a wild plum tree and a bamboo tree have been carved in bold relief—down to the white jade ground—and engraved in the white at one side is a branch of the sacred fungus. Pink coral stopper.

35—SPOTTED AGATE SNUFF BOTTLE

1200—In irregular flask-shape, with well-defined foot and coral stopper. Translucent gray jade of melting mutton-fat suggestion, spotted with rich browns and black. The face is carved with the figure of a man fishing under a pine tree, a fish leaping from the waves at the end of his line, fungus branches and flying birds, the dark spots skilfully utilized to bring out these features and details. Lustrous polish.

36—AGATE SNUFF BOTTLE

1250—Flattened, ovoidal contour. Translucent gray agate with rich iron-rust and velvety-brown mottlings, which so notably take the form of a tall cliff with outlying rocks at its foot that the artist has turned this natural tinting to account and has carved dashing sea waves at the base, above the foot of the bottle. Coral stopper carved with a crawling land-dragon.

37—CAMEO AGATE SNUFF BOTTLE

17⁰⁰—Ovoidal contour and thick body. Translucent light yellow-brown agate with darker spots—in one of which a flying bat is engraved—and with an overlying vein of opaque yellow and brown across the face, in which is carved in relief a three-clawed dragon in pursuit of the pearl of omnipotence. Emerald-green stopper.

38—AGATE SNUFF BOTTLE

1 J⁰⁰—Capacious flask-shape. Pale blond or ashen-hued translucent agate, with a smooth, lustrous polish, carved in relief on one side with a stout horse, hitched to a post which rests on a brick foundation—reddened and yellowing variations in the structure and color of the material being effectively used in giving shading and quality to the picture.

39—AGATE SNUFF BOTTLE

15⁰⁰—In generous flask-shape, one face duly hollowed or indented. Clear translucent, semi-transparent agate of “ashen-blond” hue, polished to a lustrous mirror-surface. In the depression on one face is a mass of matrix or iron-brown and yellow agate, of curious aspect. It takes roughly the form of a duck swimming and has been skilfully handled in the way of emphasizing the impression.

40—MOTTLED AGATE SNUFF BOTTLE

12⁰⁰ — In gourd-form, combining fruit and vine, carved, pierced and engraved, and brilliantly polished. The color varies from an opaque starch-blue to a semi-translucent amethystine hue, with one of the leaves executed in a dark sugary brown.

41—BROWN CRYSTAL SNUFF BOTTLE

58⁰⁰ — Flattened flask-shape, carved in transparent brown crystal which against the light takes a tone of pale *aubergine*-brown, smoothly polished and unadorned.

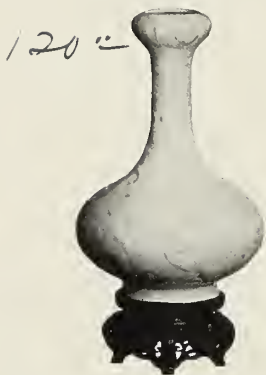
SINGLE-COLOR PORCELAINS OF CABINET SIZE

42—PEACOCK-BLUE BOTTLE (*Ch'ien-lung*)

27⁰⁰ — Ovoid body and long, full, straight neck, something of the ten-pin shape, the flat foot deeply recessed underneath; light porcelain of open texture, covered with a mirror-glaze of the blue approximating a deep-toned turquoise and classified as peacock-blue; exhibiting a firm, pronounced crackle throughout.

Height, 6 inches.

43—WHITE BOTTLE-SHAPED VASE (*Ch'ien-lung*)



Squat-ovoidal body on a circular, slightly-spreading foot; delicate, slender neck, expanding in a bulbous lip. *Fun-ting-yao*, the light so-called "soft paste" porcelain, covered evenly with a soft and beautiful creamy-white glaze of lustrous surface, over a bas-relief decoration of three-clawed lizard-dragons grasping in jaws and claws scrolling branches of the *polyporus lucidus*—the

sacred magic fungus. This decoration extends from foot to neck; and on the lip is a circlet of downward-pointing palm leaves.

Height, $5\frac{1}{4}$ inches.

44—TURQUOISE VASE (*Ch'ien-lung*)

30" — A short cylindrical or drum-shaped body, set low, slopes at a slow angle to a contracted and slightly-spreading short foot; the broadly-sloping shoulder curving gracefully into a neck narrow and slender at its start, which expands in elongated funnel-shape as it rises to the flat lip. Glazed in a brilliant turquoise-blue with a fine fish-roe crackle, the glaze thickening and

deepening at shoulder-edge, base of drum and foot-spread to a dark and lustrous hue. Underneath the foot a pond-scum green glaze.

Height, 5 inches.

45—CALF'S-LIVER GALLIPOT (*Ch'ien-lung*)

55⁰⁰ White porcelain coated with a glaze of dull luster in the reddish-brown tone of fresh liver, the surface with that incipient crinkle which suggests the texture after which the glaze has been named. The color occasionally deepens to a burnished mahogany-brown. Rim and foot glazed in white.

Height, 5½ inches.

46—PEACOCK-BLUE BOTTLE (*Ch'ien-lung*)

25⁰⁰ Pear-shape on a bold foot, with short slender tubular neck. Brilliant glaze of the turquoise order, approaching the hue defined as peacock-blue and having a fine fish-roe crackle throughout.

Height, 6 inches.

47—MAZARINE-BLUE BOTTLE (*Ch'ien-lung*)

20⁰⁰ Globular-ovoidal body with flat foot, recessed underneath, and full, tubular neck. Heavy white porcelain clothed in a rich monochrome glaze of deep mazarine-blue and mirror-quality, with *peau-d'orange* surface.

Height, 5¾ inches.

48—PEACOCK-BLUE JAR (*Ch'ien-lung*)

45^{cc}—Oviform, the rounded shoulder sloping into a short neck which has started on an outward curve at the lip, the neck-root modeled on the shoulder. Coated with a lustrous *truité* glaze of peacock-blue in rich tone, and beautifully mottled in deeper key.

Height, 5½ inches.

49—MIRROR-BLACK BOTTLE (*Ch'ien-lung*)

27⁵⁰—Globular-ovoidal body on a flat foot slightly recessed underneath; sloping shoulder and straight tubular neck. White porcelain enwrapped in a mirror-glaze of midnight blackness and remarkable uniformity and luster, a ring of brown glaze both inside and outside the rim, and an iron-rust and black glaze underneath the foot.

Height, 5¾ inches.

50—BLEU-SOUFFLÉ GALLIPOT (*Ch'ien-lung*)

50^{cc}—Pure white vibrant porcelain, with an unctuous glaze of dull luster and interesting quality presenting notes of the robin's-egg *soufflé*—or pale malachite tone—largely overborn by a soft and deep gray-blue, all in the *soufflé* method.

Height, 5¾ inches.

51—CAMELLIA-LEAF GREEN VASE (*Ch'ien-lung*)



Flattened pear-shape on a spreading foot, with short neck and everting lip and two loop shoulder-handles. Pure white porcelain coated with a rich and luminous glaze in the deep green of the camellia leaf, marked by a bold, firm crackle. Green glaze continues underneath the foot and in lighter tone on the interior of the neck.

Height, 5¾ inches.

52—MAZARINE-BLUE BOTTLE (*Ch'ien-lung*)

22⁰⁰ Ovoid with a thick, full neck very slightly expanding; the glaze a dark mazarine-blue that runs almost to black and has a brilliant surface.

Height, 6 inches.

53—CORAL BOTTLE (*Ch'ien-lung*)

60⁰⁰ Full-bodied pear-shape, on a low foot; with short, slender straight neck. Clear hard paste with a thin glaze in soft coral-hue, having a dull lustre with delicate metallic suggestions.

Height, 6 inches.

54—CELADON VASE (*Ch'ien-lung*)



Low, ovoidal body on a circular foot, the shoulder flattened, the neck straight and slender and lightly flaring at the lip. The glaze a pure, pale sea-green, delicate in quality and lightly emphasizing a beautiful flower and fungus scroll which is modeled and etched in the paste below it.

Height, 5½ inches.

55—ROSE-SOUFFLÉ BOTTLE-SHAPED VASE
(*Ch'ien-lung*)

35-00 Ovoid body, sloping shoulder and straight tubular neck. Heavy hard paste, with a bountiful *rose-soufflé* glaze over a white ground, and presenting the unusual detail of rich green fleckings, widely scattered. Under foot a gray-white glaze minutely crackled; interior of neck with dark green crackled glaze.

Height, 5½ inches.

56—"PEACOCK-BLUE" BOTTLE (*Ch'ien-lung*)

70 — Pear-shaped, on a deep circular foot, with short slender neck; heavy vibrant porcelain covered with a glaze of the turquoise order but dark in tone and with green trend, placing it among the peacock-blues, and having a minute fish-roe crackle.

Height, 6¼ inches.

MONOCHROME GLAZE PORCELAINS OF
INTERMEDIATE SIZES

57—RARE LIME-GREEN JAR (*Ch'ien-lung*)

65 — Melon-shape, with six lobes or ribs, on flat foot slightly recessed underneath; narrow rounding shoulder and wide mouth; a line of bosses just beneath the shoulder, one to each lobe. The glaze is a rare one, in the rich, bright green hue of the unripe lime, and has a dull luster and an infinitesimal, almost invisible crackle.

Height, 4¾ inches; diameter, 4 inches.

58—"SOFT PASTE" WHITE VASE (*Ch'ien-lung*)

10 " In bulbous pear-shape on a deep, flaring foot, the body tapering slowly to a full neck which spreads lightly and ends in a beveled lip. *Fun-ting-yao*, or the so-called "soft paste," of delicate texture, coated with a rich cream-white glaze, which on the neck shows a colorless crackle and on the underbody and foot and under the foot a pale *café-au-lait* crackle. Lightly etched and modeled in the paste, on one face, is a branching and blossoming rock peony.

Height, $7\frac{3}{4}$ inches.

(Illustrated)

59—MIRROR-BLACK VASE (*K'ang-hsi*)

160 " Somewhat of amphora-shape without handles. Tall ovoidal body on flat foot recessed underneath, with flattened shoulder, short neck and wide trumpet-lip. Brilliant mirror-black glaze of *peau d'orange* surface, flowing evenly from the white-glazed lip to the perfect foot—which underneath has a white glaze.

Height, $7\frac{3}{4}$ inches.

60—LAPIS-BLUE BOTTLE (*Ch'ien-lung*)

55 " Globular-ovoidal body and tubular neck. Clear hard paste of sonorous quality, coated with a lustrous glaze in bright lapis-lazuli hue, with the gray trend in strong evidence and a *peau-d'orange* surface.

Height, $8\frac{1}{4}$ inches.

61—WHITE VASE (*Ch'ien-lung*)

70⁰⁰ Bulbous ovoidal body on a slightly spreading foot, with wide neck formed by the body-line recurving, and continuing in a light flare to the thin lip. Sonorous hard paste, carrying an ornate chrysanthemum-scroll modeled under the luminous soft white glaze, around the body, and on the neck a deep border of palmations modeled and etched.

Height, 8 inches.

62—TURQUOISE-BLUE BOTTLE-SHAPED VASE
(*Ch'ien-lung*)

38⁰⁰ In the form of a broad ovoid jar with a baluster-shape vase superposed as neck. Dense hard paste covered with a crackled turquoise glaze varying from blue to the green of the washed stone, the color deepening to a dark clear sky-blue in a ring at the base of the neck. (Lip slightly nicked.)

Height, 7¼ inches.

63—PEACOCK-BLUE BOTTLE (*Ch'ien-lung*)

45⁰⁰ Ovoid, on flat foot, with underfoot recess; tall thick neck. Dense porcelain, coated in a monochrome glaze of peacock-blue, minutely crackled, of lustrous surface, and exhibiting a succession of transverse striations, besides mottlings.

(*Illustrated*) *Height, 8¼ inches.*

huc. Interior of neck and foot have the same gray glaze, the rim of the foot glazed in brown, and the under-foot bearing the seal of Ch'ien-lung in brilliant blue under the glaze.

(Illustrated) Height, $8\frac{1}{4}$ inches.

67—PEACOCK-BLUE BOTTLE (Ch'ien-lung)



Ovoid, with flat foot, recessed underneath, and tall full neck. Sonorous hard paste, brilliantly glazed in peacock-blue with fish-roe crackle, the glaze mottled with deep sky-blue and turquoise-green, and those uncertain green dapplings seen in a peacock's coat.

Height, $8\frac{3}{4}$ inches.

68—CELADON VASE (K'ang-hsi)

67
60"

Cylindrical club-shape on low foot; narrow sloping shoulder and wide neck, with flange-lip. Dense, resonant porcelain of K'ang-hsi coated with a pure, luminous glaze of grayish sea-green tone, over an elaborate and profuse floral scroll ornamentation incised and modeled in the paste and engraved; the rim white.

Height, $8\frac{1}{4}$ inches.

69—POWDER-BLUE VASE (*K'ang-hsi*)



30" Oviform on a high and flaring foot, with broadly-sloping shoulder, cylindrical neck and flanged lip. Clear white porcelain, sonorous, covered with a *bleu-fouetté* glaze rich and lustrous, of cobalt quality and mirror surface.

Height, 8½ inches.

70—CELADON VASE (*Yung Chêng*)

69

65" Chêng

Inverted pear-shape with broad foot, and rounded shoulder recurring in a short neck and flaring lip. The body is encircled by groups of three lightly molded ridges with channels between them, this formation occurring three times—at shoulder and low waist and midway between. Dense porcelain covered with a gray-celadon glaze of dull luster with a strong *café-au-lait* crackle. Under foot the seal of Yung Chêng in dark blue under the glaze.

Height, 9 inches.

71—PAIR MUSTARD-YELLOW SPHERICAL TRIPOD
JARS WITH COVERS (*Ch'ien-lung*)



Divided equatorially, and each section supplied with three deep palmate projections, the whole, with the ornamentation, taken from an ancient bronze original—a fad of the Emperor *Ch'ien-lung* with regard to the porcelain industry of his day. Clear porcelain with a ringing note, in a monochrome glaze of mustard-yellow with metallic luster. Exterior en-

tirely covered with relief and incised swastika and key fret, flame and fungus scrolls, in bands and medallions and detached details.

Height, 8½ inches; diameter, 6½ inches.

72—RED-BROWN BOTTLE (*Ch'ieu-lung*)

50'—Globular on low foot; short neck. Clear white porcelain coated with a red-brown glaze of peculiar color-quality, flushing to a real red near the lip and in a ring at the foot.

Height, 8½ inches.

73—LIGHT GRAY VASE (*Ch'ien-lung*)

90

Inverted pear-shape, the rounded shoulder somewhat flattened; short, thick neck with slightly everted and round lip. Clear hard paste, encircled by three molded bands—at shoulder and waist and midway between them—the bands perhaps channeled but hardly perceptibly. The shape is an adaptation of an older form that sometimes appears in the celadons, and the light gray glaze that covers it resembles somewhat a celadon at a glance but really more nearly approximates a *clair-de-lune* glaze of grayish tendency. The glaze is pervaded by a *café-au-lait* crackle. Underneath the foot the seal of the reign, in blue under the glaze.

Height, 9 inches.

74—FINE CAMELLIA-GREEN VASE (*Yung Chêng*)

850

Globular bottle-shape with tubular neck. Fine white porcelain glazed in a rich, deep camellia-leaf green.

Height, 13 inches.

75—PEARL-GRAY BOTTLE (*Ch'ien-lung*)

Pear-shape with short foot and full neck.

135⁰⁰—Clear sonorous heavy white porcelain covered with a lustrous glaze of even quality in a soft pearl-gray tone. Seal of *Ch'ien-lung* in brilliant blue under the glaze of the foot.

Height, 9 inches.

NOTABLE MONOCHROME GLAZE PORCELAINS

76—PEACOCK - BLUE BOTTLE - SHAPED VASE
(*Ch'ien-lung*)

100⁰⁰—Globular, with thick neck. The glaze a brilliant peacock-blue, duly speckled in darker color and having a fish-roe crackle.

Height, 12¼ inches.

77—DARK SHAGREEN BOTTLE-SHAPED VASE
(*Ch'ien-lung*)

210⁰⁰—Globular, with short wide neck. Coated with a dark shagreen glaze, densely crackled.

Height, 11½ inches.



78—LARGE MOTTLED MAROON BOTTLE-SHAPED
VASE (*Ch'ien-lung*)

+ 50 "Globular, with a finely proportioned neck. A vase of remarkably excellent quality throughout—porcelain, modeling, glaze and finish. The paste has a lightly rumpled surface and is coated, on the exterior, with a lustrous and rich maroon glaze which is mottled about the underbody. Under the foot, which is glazed in a beautiful pistache-green, the seal of *Ch'ien-lung* appears in vermilion within a reserved square of white glaze. Interior of neck also in pistache-green; the white-glazed rim gilded.

Height, 12½ inches.

79—LARGE CREAMY-WHITE BOTTLE-SHAPED VASE
(*Ch'ien-lung*)

2580—Globular, with slender neck. Between a paneled base-border and a shoulder border of scepter-heads the body is covered with a profuse conventional chrysanthemum scroll, incised and modeled in the paste. The neck has a wave border at the root, a circlet of deep palmations, and beneath the lip foliate and key-fret borders. The entire surface covered with a lustrous glaze of soft creamy white.

Height, 13½ inches.

80—LARGE ROYAL BLUE BOTTLE-SHAPED VASE
(*Ch'ien-lung*)

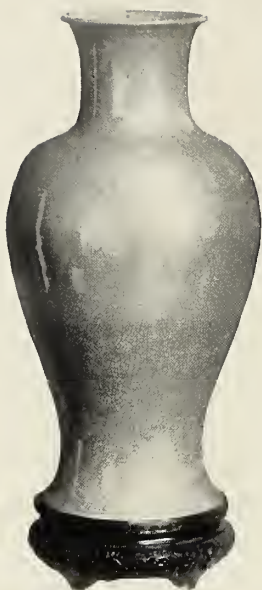
8900—Low ovoidal broad body on bold concavo-convex foot, with slender neck and lightly flaring lip. Exterior coated with a brilliant mirror-glaze of royal blue; rim, interior of neck and underfoot white. Foot bears *Ch'ien-lung's* seal in deep blue under the glaze.

Height, 14½ inches.

81—ROBIN'S-EGG SOUFFLÉ VASE (*Ch'ien-lung*)

1700—Squat bottle-shape on deep circular foot; tapering to a slender neck with spreading lip. Affluent robin's-egg *soufflé* glaze of dull luster in deep gray-blue and pale malachite-green effects.

Height, 13 inches.



82—TALL CAFÉ-AU-LAIT VASE (*Ch'ien-lung*)

200^{us} Tall inverted pear-shape with flaring foot, high rounded shoulder, and short wide neck with spreading lip. Heavy porcelain, covered with a rich dark *café-au-lait* glaze having a bold, emphatic crackle in very dark lines, the glaze extending to the interior of the neck. Under foot a gray-white glaze with brown crackle.

Height, 18 inches.



83—TALL SANG-DE-BŒUF VASE (*K'ang-hsi*)

1200-
Inverted pear-shape with spreading foot, short neck and flaring lip. Dense porcelain of *K'ang-hsi* enameled with a remarkable *sang-de-boeuf* glaze of great brilliancy, exhibiting the highly-prized effect in all its phases, from the rich red of the fresh ox blood through the clotting to the dark brown of the wholly congealed blood, with notable pittings and strange drippings, and the whole crackled. Under foot and within lip a gray-white glaze with crackle.

Height, 17 $\frac{3}{4}$ inches.

84—TALL BLUE BOTTLE (*Ch'ien-lung*)

25"

In pear-shape, with opulent body on a spreading foot, and slender neck. Dense, heavy porcelain of sonorous quality, glazed in a rich, deep-toned lapis-blue, with the *peau-d'orange* surface and a mirror luster.

Height, 19½ inches.

85—TALL GRAY BOTTLE (*Ch'ien-lung*)

17 1/2"

Pear-shape, on circular foot, tapering to a short and slender straight neck. Coated with a gray, or drab, crackle glaze, the crackle being for the most without color in the upper portions of the vase, while about the underbody it is a well-marked *café-au-lait*. Underneath the foot, which is similarly glazed, the *Ch'ien-lung* seal in blue.

Height, 18¾ inches.

86—RARE TALL BLUE VASE (*K'ang-hsi*)

21 1/2"

Oviform, with spreading foot, and short neck marked by a molded ring; lip lightly flaring. Light porcelain covered with a luminous blue glaze of cobalt quality, parts of the surface a mirror, the glaze a gray uncertain blue on the upper portions of the vase, and deepening toward a lapis below. (Lip repaired.)

Height, 17½ inches.



87—RARE AND BEAUTIFUL LANG-YAO VASE
(*K'ang-hsi*)

958
Superb in form, an opulent inverted-pear shape, narrowing almost to a "wasp waist," with flaring foot; the wide neck short, with the lip spreading. The glaze, of wondrous brilliancy, is smooth in the body and of *peau-d'orange* texture on the neck. It is variously crackled and its wealth of color ranges from the deep glow of the ox blood and the clottings and congealing to the delicate tints of the peachblooms and ashes-of-roses.

Height, $17\frac{1}{4}$ inches.

SINGLE-COLOR PORCELAINS OF VARIOUS
FORMS AND SIZES

88—LIVER-COLOR VASE (*Ch'ien-lung*)

88 — Squat ovoid body on a spreading foot, with long tubular neck. Coated with a brilliant glaze of pale liver-color.

Height, 10 inches.

89—PEACOCK-BLUE BOTTLE (*Ch'ien-lung*)

89 — Low ovoidal body on a bold circular foot, with thick straight neck. Covered with a brilliant glaze of peacock-blue, variously mottled, and having a strongly-marked crackle in dark lines.

Height, 11½ inches.

90—POWDER-BLUE BOTTLE (*Ch'ien-lung*)

90 — Globular body slightly compressed, with graceful neck of lightly curved outline. Covered with a lustrous powder-blue glaze, the rim and foot glazed in white. The foot bears a six-character inscription of K'ang-hsi penciled in blue under the glaze, but the foot and the porcelain both point to later manufacture, namely the period of Ch'ien-lung.

Height, 12 inches.



91—RARE MONOCHROME JAR (*Ch'ieu-lung*)

7000 In the form of a pear-shaped vase of full body and wide neck with the neck truncated; on a deep circular foot. Firm and delicate hard paste porcelain with a clear musical note, coated with a pure and luminous glaze of an unusual pink tone, with shadings of peachbloom tint and of soft, refined quality.

Height, 10 $\frac{1}{4}$ inches.

92—LARGE CORAL-RED VASE (*Ch'ien-lung*)

+ 0 05" The body ovoidal and somewhat squat, with steeply-sloping shoulder tapering into a short full neck. Coated with a mottled coral glaze of metallic luster, somewhat dull on the shoulder and brilliant on the underbody and neck. Near the foot the glaze exhibits a curious crackle or veining, resembling the veining in marble.

Height, 12¼ inches.

93—TALL BROWN BOTTLE (*Ch'ien-lung*)

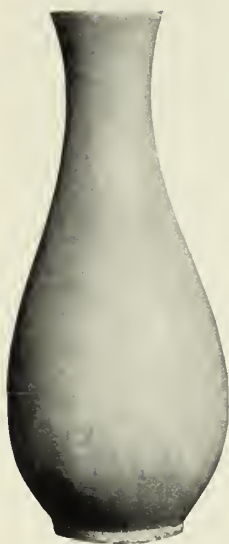
0 5" Pear-shaped on a short foot, with slender neck. Glazed in the colors of *feuilles mortes*, ranging from a reddish-brown to a brown deepening and darkening toward a seal note.

Height, 13¼ inches.

94—WHITE BOTTLE-SHAPED VASE (*Ch'ien-lung*)

1 00 05" In bulbous pear form tapering to a short slender neck; on deep foot. The body is surrounded by an elaborate peony scroll, incised and modeled in the paste, between a scepter-head shoulder-border and a border of deep and narrow panels at the base, while the neck has borders of scepter-heads, key fret, and alternate long and short leaves. The whole glazed in a soft creamy white.

Height, 13½ inches.



95—IVORY WHITE VASE (*Ming*)

+ 20⁰⁰—
In baluster or graceful elongated-pear shape, on a low foot. Covered with an ivory-white glaze that is almost a *café-au-lait*, or a cream-yellow, densely cracked.

Height, 16 $\frac{3}{4}$ inches.

96—TALL BROWN BOTTLE (*Ch'ien-lung*)

70⁰⁰—
Full-bodied pear-shape on short foot, with slender neck. Mirror-glaze of a rich and mellowed brown tone of pinkish trend, with here and there at the base the grayer brown of cooked-liver color.

Height, 13 $\frac{1}{2}$ inches.

97—POWDER-BLUE BEAKER (*Ch'ien-lung*)

20" — Conventional form, coated with a rich glaze in cobalt blue *fouetté* of lustrous depths and charming quality, with a mirror-surface.

Height, 17¾ inches.

98—MIRROR-BLACK BEAKER (*Ch'ien-lung*)

+ 70" — Conventional form, coated with a brilliant mirror glaze in black with raven's-wing and metallic luster, which reveals plainly the designs of an original extensive decoration in gold, comprehending the phoenix and dragon motives and floral and arboreal forms.

Height, 17¼ inches.

99—CELADON JAR (*Ming*)

80" — Ovoid with flat foot, the sloping shoulder terminating in a raised and rounded lip. Stone-weight porcelain with a heavy leaf and blossom scroll decoration modeled in the paste, between borders, the whole covered with a dark sea-green glaze of bright surface.

Height, 8¼ inches.

100—LARGE CELADON BOTTLE (*Ch'ien-lung*)

100 "—Ovoid with a full neck of lightly curving outline. Modeled in the paste and incised is an extensive decoration of conventionalized floral scroll, scepter-head, scroll-fret and key-fret borders, and deep palmations. Covered with a brilliant monochrome glaze of pale, light sea-green tint, which continues on the bottom and the interior of the neck.

Height, 14½ inches.

101—CELADON VASE (*K'ang-hsi*)

101 "—Bulbous pear-shape with a flaring lip, on a tall spreading foot. The decoration, modeled in the paste and etched, consists of a rich peony scroll occupying the main part of the body, with a deep band of palmations about the neck, and borders at shoulder and on the foot. Over all a luminous sea-green glaze, the green inclining to brown, with white at rim and base.

Height, 15 inches.

102—PEACOCK-BLUE VASE (*Ch'ien-lung*)

102 "—In the form of an ovoidal jar with flat foot and high shoulder, wide neck and short spreading lip. Light porcelain coated with a richly mottled, brilliant peacock-blue glaze with a fine fish-roe crackle.

Height, 13¾ inches.



103—REGAL CELADON JAR (*K'ang-hsi*)

235"
Elongated ovoidal form with high, full shoulder and short neck, and narrowing to a slightly spreading foot. Sonorous porcelain of the stone-weight variety, with an extensive landscape decoration of trees, pavilions and rocks at the seashore, modeled boldly in the paste and etched. Covered with a luminous monochrome glaze of pure sea-green tone. On the white-glazed foot, *Ta-Ch'ing K'ang-hsi nien-chih*, in blue under the glaze.

Height, 17½ inches.

104—TALL CELADON JAR (*Ch'ien-lung*)

260"—Elongated form, expanding slowly as it rises from a flat circular foot to a high rounded shoulder which recurves in a short neck flaring at the lip. Carved in relief in the paste is an all-over flower-scroll decoration and an elaborate scepter-head and scroll shoulder-border, with other borders and palmations at base and neck modeled in the paste and incised. Delicate sea-green glaze of great brilliance, inclining toward blue, over all.

Height, 17 inches.

105—POWDER-BLUE BOTTLE (*Ch'ien-lung*)

135"—Spherical on a low foot, with a tall, slender, tubular neck. Beautiful glaze of *bleu-fouetté*, soft and rich, in cobalt quality, with brilliant surface. Mark, the blue double ring on the white glazed foot.

Height, 17¼ inches.

106—MUSTARD-YELLOW JAR (*Ch'ien-lung*)

800"—Ovoid on a spreading foot; with short, wide, abbreviated neck. Coated with a monochrome glaze of mustard-yellow, the color warming and deepening on the shoulder.

Height, 12¼ inches.

107—TALL LANG-YAO BOTTLE (*Ch'ien-lung*)



207 — Spherical body, on a bold foot the exterior of which is left unglazed, exposing the pure biscuit; tall, slender "funnel" neck. Enamelled with a brilliant *sang-de-bœuf* glaze—smooth on neck and main part of body, and having the orange-skin surface about shoulder and foot—embodying the various red and brown tones of clotted and congealed ox-blood, the glaze on the neck being crackled. Under the foot a gray-white glaze with *café-au-lait* crackle.

Height, 16¾ inches.

108—TALL LANG-YAO VASE (*K'ang-hsi*)

670 — Oviform with spreading foot, and wide short neck flaring at the lip. Brilliant glaze in the peachbloom colors, from pale greenish-gray of the neck and shoulder through washes of varying pink and pale rose to *sang-de-bœuf* notes about the foot. Bold crackle. On the interior of the neck a gray-white glaze with a fine *café-au-lait* crackle. Foot glazed in white. Has stand.

Height, 16 inches.

109—TALL SANG-DE-BŒUF JAR (*K'ang-hsi*)

1200" Cylindrical club-shape with spreading lip. Brilliant glaze in the dark red hue of the clotted ox-blood, unusually even in the general color-tone from the white rim to the perfect foot. Inside the neck and under the foot a *café-au-lait* crackled glaze. Has stand.

Height, 17¼ inches.

110—BRILLIANT LANG-YAO VASE (*K'ang-hsi*)

600" Oviform with spreading foot, short neck and flaring lip. The mirror glaze, pale at the top in pink and ashes-of-roses, deepens slightly and changes to *sang-de-bœuf* colors further down, and near the foot reveals the characteristic gray and greenish tones found in these and the peachbloom vases. Cracked throughout. On the white-glazed foot the six-character mark of Ch'eng Hua (apocryphal). Has stand.

Height, 16½ inches.

111—MIRROR-BLACK VASE (*K'ang-hsi*)

500" Cylindrical club shape with slightly in-drawn foot, cylindrical neck encircled by a molded ring, and flanged lip. Sonorous porcelain covered with a brilliant mirror-black glaze of a very delicate *peau-d'orange* finish. Has stand.

Height, 18 inches.

112—TALL POWDER-BLUE VASE (*K'ang-hsi*)

250 "
Cylindrical club-shape with low foot and flange lip; lustrous glaze in the *bleu-fouetté*, dark and rich. Mark, a blue double ring. Has stand.

Height, 18 inches.

113—TALL POWDER-BLUE VASE (*K'ang-hsi*)

60 "
Cylindrical club-shape; low foot and flanged lip. Lustrous glaze of blue *fouetté*, or powder-blue, of rich quality, delicately mottled in lighter and darker patches. Has stand.

Height, 17½ inches.

DECORATED PORCELAINS

114—GREEN DECORATED JAR (*Ch'ien-lung*)

210 "
Quadrilateral, the sides rounding in to a square and spreading foot, and similarly to a short quadrilateral neck with a slightly expanding lip. Covered with a brilliant deep green glaze of slight metallic luster. Decorated under the glaze with landscapes in black, also several borders, including lattice, cross-hatch and key-fret, and on the neck palmations. Has stand.

Height, 14½ inches.



115—BLUE AND WHITE VASE (*Ming*)

375⁰⁰

Octagonal, with bulging shoulder, contracting gently in ovoidal curvature to a heavy pedestal-foot of two tiers: short contracted neck, expanding at the lip. Stone-weight porcelain, the white glaze rich and soft; decorated in two shades of underglaze blue with magnolia, plum and other trees in blossom, birds singing from the branches and insects winging through the air, in panels with elaborate borders, and on neck and shoulder with other motives.

Height, 17 inches.



116—TALL BLUE AND WHITE VASE (*Yung Chêng*)

2200"-
 Oviform with short neck. *Fun-ting-yao*—so-called soft paste—covered with a rich, creamy-white glaze marked by a peculiar crackle. Decorated in underglaze and overglaze blue—with subsequent final firing—with large branches of the fruits of the three abundances, the endless-knot and the twin-fish—emblems of long life and conjugal felicity—and several borders and other devices. Has stand.

Height, 19 inches.



117—BLUE AND WHITE VASE (*K'ang-hsi*)

7570c Club-shaped, with cylindrical neck and spreading lip. Dense resonant porcelain of *K'ang-hsi*, coated with a brilliant powder-blue glaze of rich cobalt quality, interrupted by white reserve medallions, foliar, fruit and fan-shaped, square and circular, painted in two tones of blue with literary ladies and playing boys, landscape and the sea, articles of household ornament and various flowers. Marked with the blue double ring. Has stand.

Height, 20 inches.

THE FOLLOWING DESCRIBED PAIR OF VASES WITH THE
BEAKER FOLLOWING WOULD MAKE A HANDSOME
GARNITURE

118—PAIR DECORATED VASES (*Ch'ieu-lung*)

300 "
Broad ovoidal body, large neck and trumpet lip. Rich, dark blue ground of *peau-d'orange* surface, penciled in gold with scrolling foliations, the swastika, and bat symbols of happiness; on the body this glaze is interrupted by molded panels glazed in white and painted with clusters of the peach, pomegranate and Buddha's-hand citron, and branches, in pink, red, yellow, green and *aubergine*. Interior of neck and foot glazed in pistache color. Ch'ien-lung seal in coral.

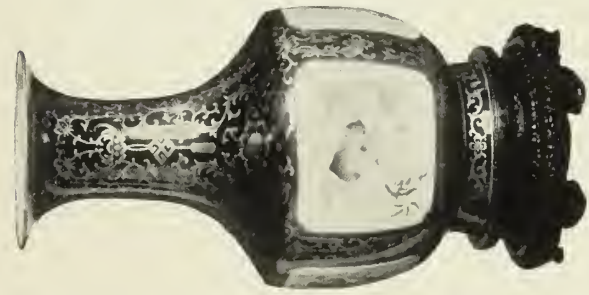
Height, 21 inches.

(*Illustrated*)

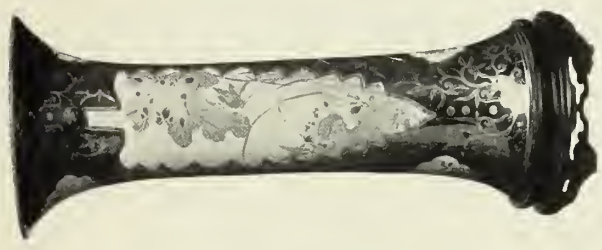
119—TALL DECORATED BEAKER (*Ch'ien-lung*)

325 "
Sonorous stone-weight porcelain, glazed in a rich dark blue adorned with foliations in gold. On obverse and reverse deep, down-pointing, serrated-leaf panels, molded and glazed in white; one painted with lotus plants and flowers and a long-billed bird, and the other with the peony, magnolia and sacred fungus, in overglaze and enamel colors in naturalistic variety. (Foot repaired.)

(*Illustrated*) *Height, 23¼ inches.*



118



119



118

DECORATED VASES OF THE CHIEN-LUNG PERIOD

121—PAIR IMPORTANT “PEACH” BOTTLES (*Ch'ien-lung*)

3 100°—Similar to the preceding, in porcelain, form, decoration and workmanship, except that the biscuit is heavier and the peaches instead of being ripe are ripening. Blue, green, pink, white, yellow, black and *aubergine* appear in the abundantly rich decoration of enamel colors. Ch'ien-lung seal in blue under the foot. Have stands.

Height, 20 inches; diameter, 14½ inches.

122—UNIQUE DECORATED VASE (*Ch'ien-lung*)

120°—Ovoid body with finely proportioned full neck. Light, resonant porcelain coated with a light green glaze which holds an all-over decoration in the form of a curiously wandering hair-line reticulation in black, at times vermiculate, in general suggesting as much as anything else a strange jumble of cloud-forms or intestinal convolutions. On the white-glazed foot the Ch'ien-lung seal penciled in red.

Height, 14 inches.



123—LARGE "DRAGON" BOTTLE (*Ch'ien-lung*)

40712
Globular, with tall graceful neck. Dense, vibrant porcelain, covered with a *peau-d'orange* glaze of pale pistache color. An enormous Imperial dragon is carved and painted in *rouge de cuivre*, his claws and eyes enameled in white. About him are cloud, flame and fungus scrolls in parti-colored enamels, and below him a lesser five-clawed dragon in purple is emerging from a billowing green-blue sea with white spray leaping in the air. Seal of the reign in red on white reserve. Has stand.

Height, 20 inches.



127—GRAND DECORATED PLAQUE (*Yung Chêng*)

3 25^{→c} Circular and deep with a bold foot; sonorous porcelain of a deep, bell tone. Glazed in a pure and lustrous white, and decorated with trees and flowers in blossoming time in joyous enamel colors, the decoration beginning at the foot and extending both about the back of the rim and over the interior or upper surface. Mark, the six characters of the reign within a double circle in brilliant underglaze blue.

Diameter, 20 inches.

128—PORCELAIN STATUETTE (*Yung Chêng*)

207 "
A man with a genial smile stands holding up in one hand a yellow box, the other hand extended over it, calling attention to it, and his mouth is open as though speaking. His face and hands are in flesh tones, and his gorgeous apparel, in places penciled with exquisite delicacy, is again boldly modeled and finished with brilliant, flashing glazes. His jacket is mauve and his skirt a light green and yellow, and he displays many other colors.

Height, 10½ inches.

129—PORCELAIN STATUETTE—THE GOD OF WAR
(*Yung Chêng*)

250 "
He sits with left hand resting on knee, and the right raised in front of him in the gesture of making a deliverance or formal announcement. The flesh is rendered in warm tones, and his magnificent robes are modeled, tooled and penciled, and glazed in brilliant enamel colors of great variety, his chief robe green. His long mustaches and chin beard are of black silk threads.

Height, 11 inches.

The three following described Buddhistic pageant figures, productions of the reign of Yung Cheng, were presentation pieces sent to the Princess of Siam on her marriage. They are of extraordinary character and unusual importance.

130—BUDDHISTIC PAGEANT GROUP (*Yung Chêng*)

+ 75" —
The goddess Kuan-yin is seated on a thalamus which is mounted on the back of an elephant, the whole in heavy porcelain, wonderfully glazed. She is gorgeously arrayed in many colors, the embroideries of her robes penciled in gold; the trappings of the elephant are worked in even greater intricacy and magnificence, and like the goddess's robes are jeweled. The whole in enamel glazes of great brilliancy, notably that of the ivory-white elephant. The thalamus is in the natural lotus pink. Has stand.

Height, 27 inches; length, 21 inches.

(*Illustrated*)

131—BUDDHISTIC PAGEANT GROUP (*Yung Chêng*)

+ 25" —
Kuan-yin, the Chinese goddess of mercy, divine hearer of prayers, is seated on a lotus throne in the same attitude and the same array as in the preceding group, but here she rides on a Fu lion, green and gray-blue and almost as brilliantly caparisoned as the preceding elephant. Has stand.

Height, 27 inches; length, 23 inches.



130

BUDDHISTIC PAGEANT GROUP OF THE YUNG
CHENG PERIOD.

132—BUDDHISTIC PAGEANT GROUP (*Yung Chêng*)

275
Kuan-yin is sitting on a thalamus in the same position as in the two foregoing groups, but with her right hand in a different attitude; and here she is mounted on a grotesque creature of the Chinese imaginary animal kingdom that has some resemblance to what the Celestials call in art a cow. The beast's trappings are uniform with those of the Fu lion, and the colors in both are the same as those on the elephant, but the beast itself is yellow and tawny brown. The goddess's rich and ornate garb is the same, except that her cape is dark instead of being a light green. Has stand.

Height, 27 inches; length, 21 inches.



133—LARGE BOTTLE-SHAPED VASE (*Ch'ien-lung*)

200 Globular-ovoidal of majestic proportions with full neck delicately incurved. Covered with a lustrous, soft pearl-white glaze marvellously crackled. On the underbody and the upper part of the neck the crackle takes a pale *café-au-lait* tone. Mark, the seal of Ch'ien-lung under the foot. Has stand.

Height, 22 inches.



134—TALL BEAKER-SHAPED VASE (*K'ang-hsi*)

158 " A majestic and beautiful example, and rare; it has been conjectured that this vase is one of the great "black hawthorns" in the making, as it were. Conventional form and perfect proportions, glazed in a bright sage green with a brilliant metallic iridescence. Under the white-glazed foot, the six-character mark of Chêng Hua (apocryphal). Has stand.

Height, 27 inches.



135—TALL FLOWER-SHAPE VASE (*Ch'ien-lung*)

225"

Quarterfoil, flattened; wide at the shoulder, contracting to a narrow foot; short neck with flaring lip. Glazed in a pure and brilliant starch-blue, of rich quality. Has stand.

Height, 21¼ inches.

136—LARGE BLUE BOTTLE (*Ch'ien-lung*)

450"

Globular with short neck. Coated with a brilliant deep blue glaze of lapis quality and limpid depths, with a delicate *peau-d'orange* surface. Has stand.

Height, 21½ inches.



137—LARGE BOTTLE-SHAPED VASE (*Yung Chêng*)

Globular on a heavy pedestal-foot, with wide neck, gently flaring at the lip—the body in the form of ancient bronze vessels.

280 " Very heavy porcelain, with two molded bands encircling the body and another the base of the neck. Coated with an even pearl-gray glaze of soft luster, having a giant crackle part of which appears in pale *café-au-lait* tone. Seal of the reign underneath foot. Has stand.

Height, 23¼ inches.

AMERICAN ART ASSOCIATION,

Managers.

THOMAS E. KIRBY,

Auctioneer.

COMPOSITION, PRESSWORK
AND BINDING BY





