

⊕ SHIMADZU SEISAKUSHO GOJO WORKS

Location : 11 Sai Umazukacho, Ukyoku, Kyoto

Plant : Land 52,046 sq. meter (15,744 tsubo)

Building area 8,925 " (2,700 ")

Floor space 20,105 " (6,082 ")

(Tw
Wa

Bldg. No 3

Electric appliances
(1,980 sq. m.)

Bldg. No 2 (Two storied Build.)

Electric appliances work shop
(2,640 sq. m.)

Production : Electric Furnaces, Dryers,
Heaters, Stoves and Toasters etc

Bldg. No 8

Welding Shop

Bldg. No 7

Welding Shop



775013

Bldg. No 7
Welding Shop

Bldg. No 1 (Two storied Build.)

Spinning Pumps and Lubricators work shop
(3.300 sq. m.)

Production : Spinning Pumps for Rayon and
Lubricators etc.

Bldg. No 6

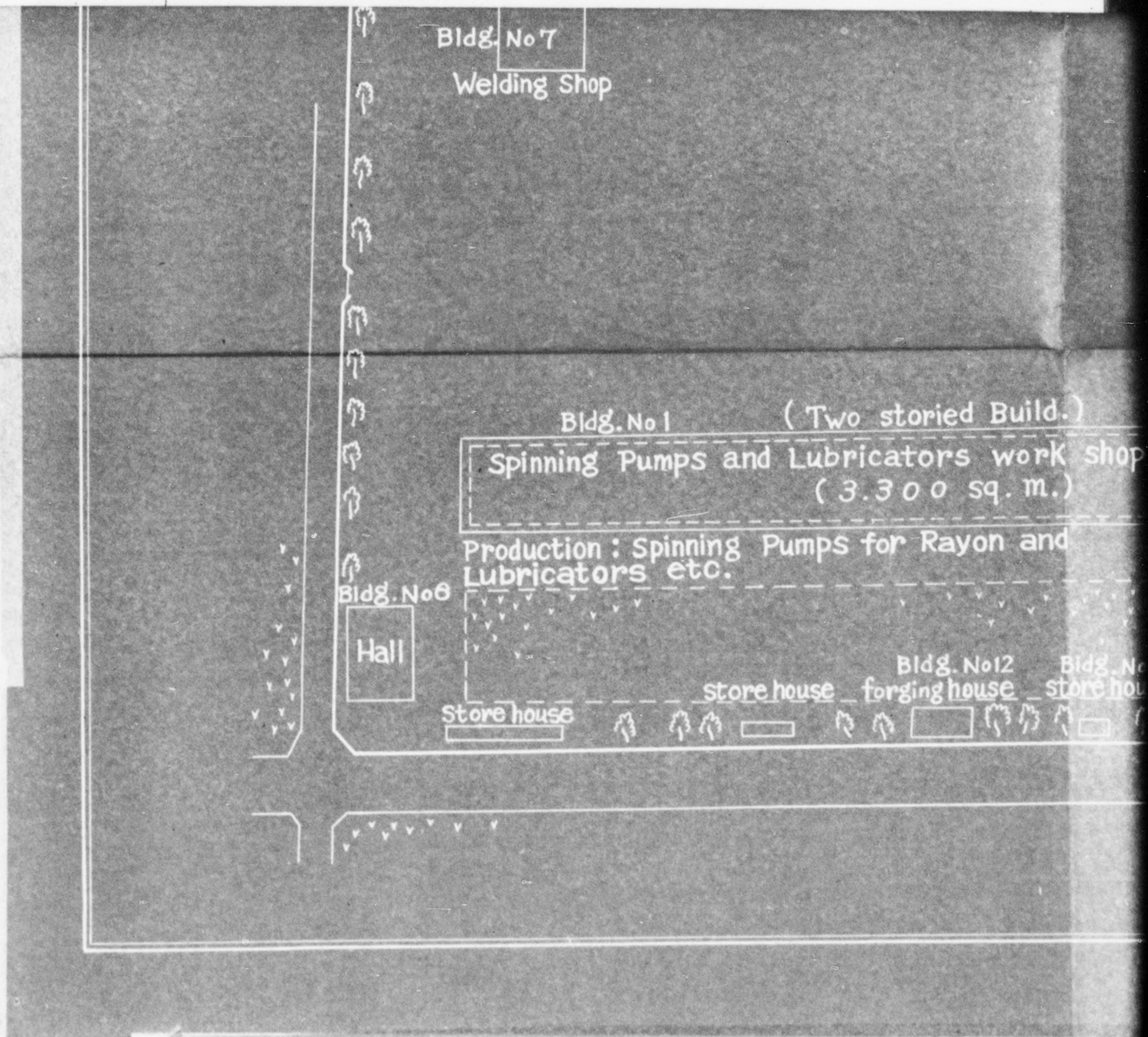
Hall

Store house

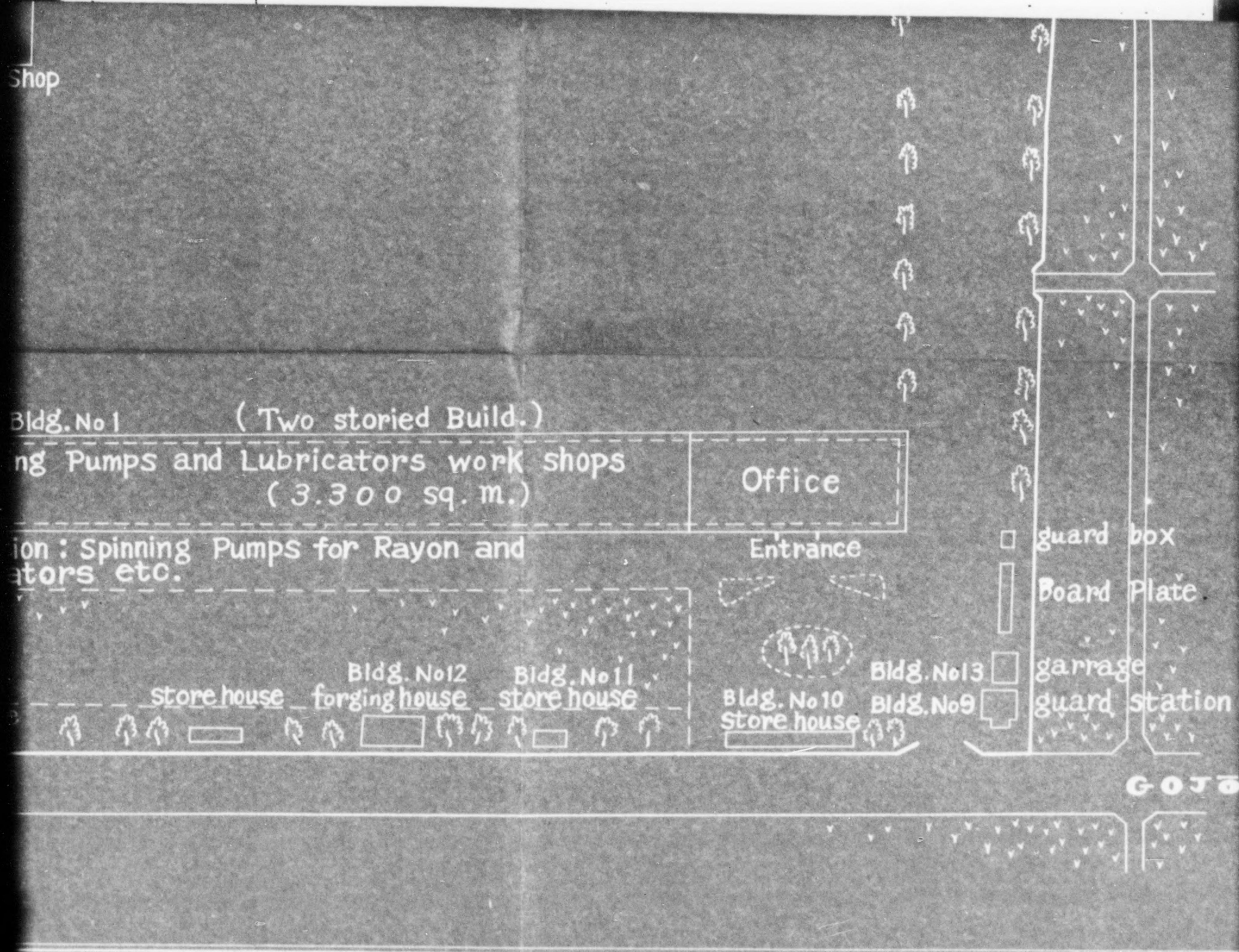
store house

Bldg. No 12
forging house

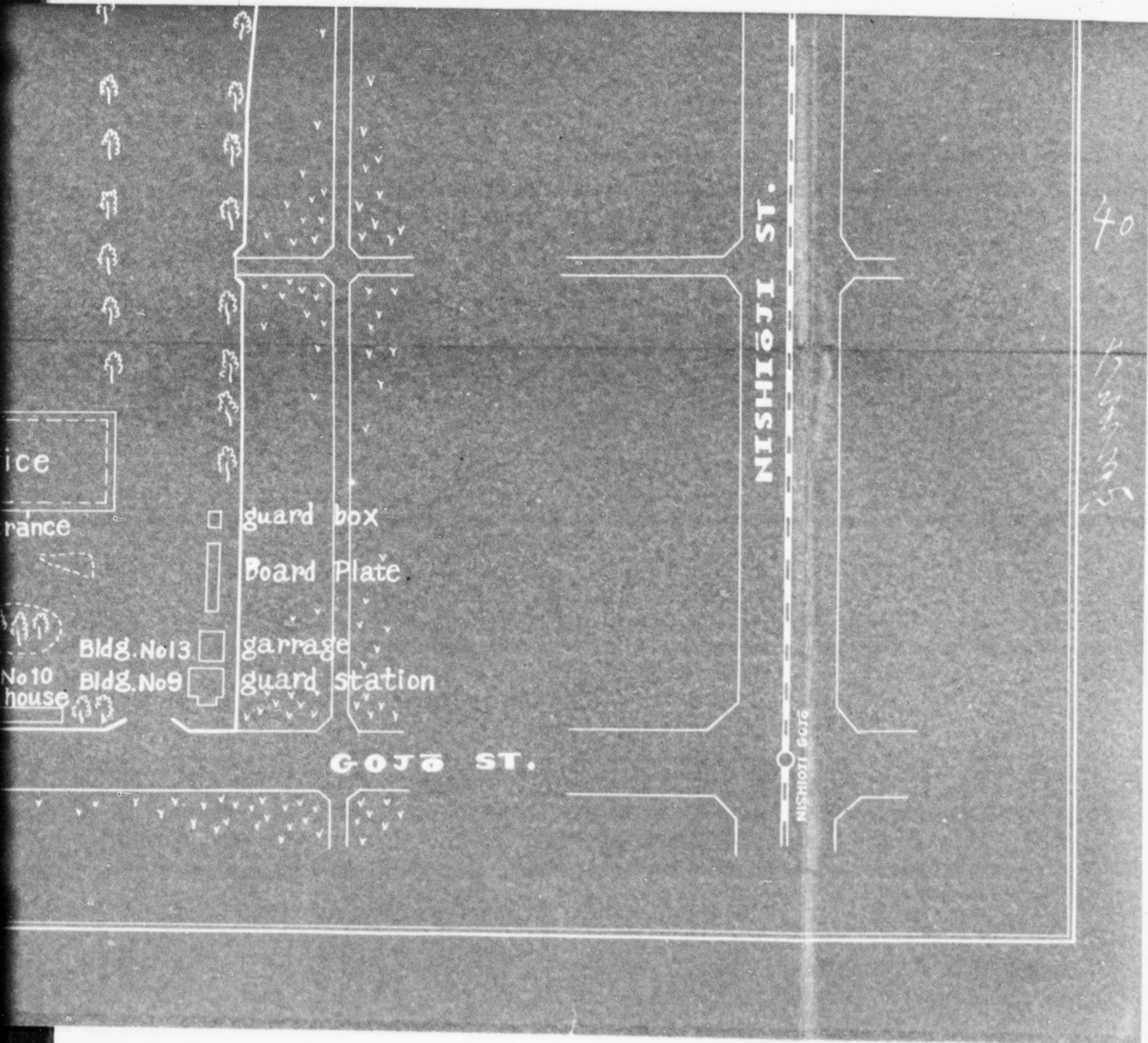
Bldg. No
store hou



775013



775013



40
急
急

775013

2



775013

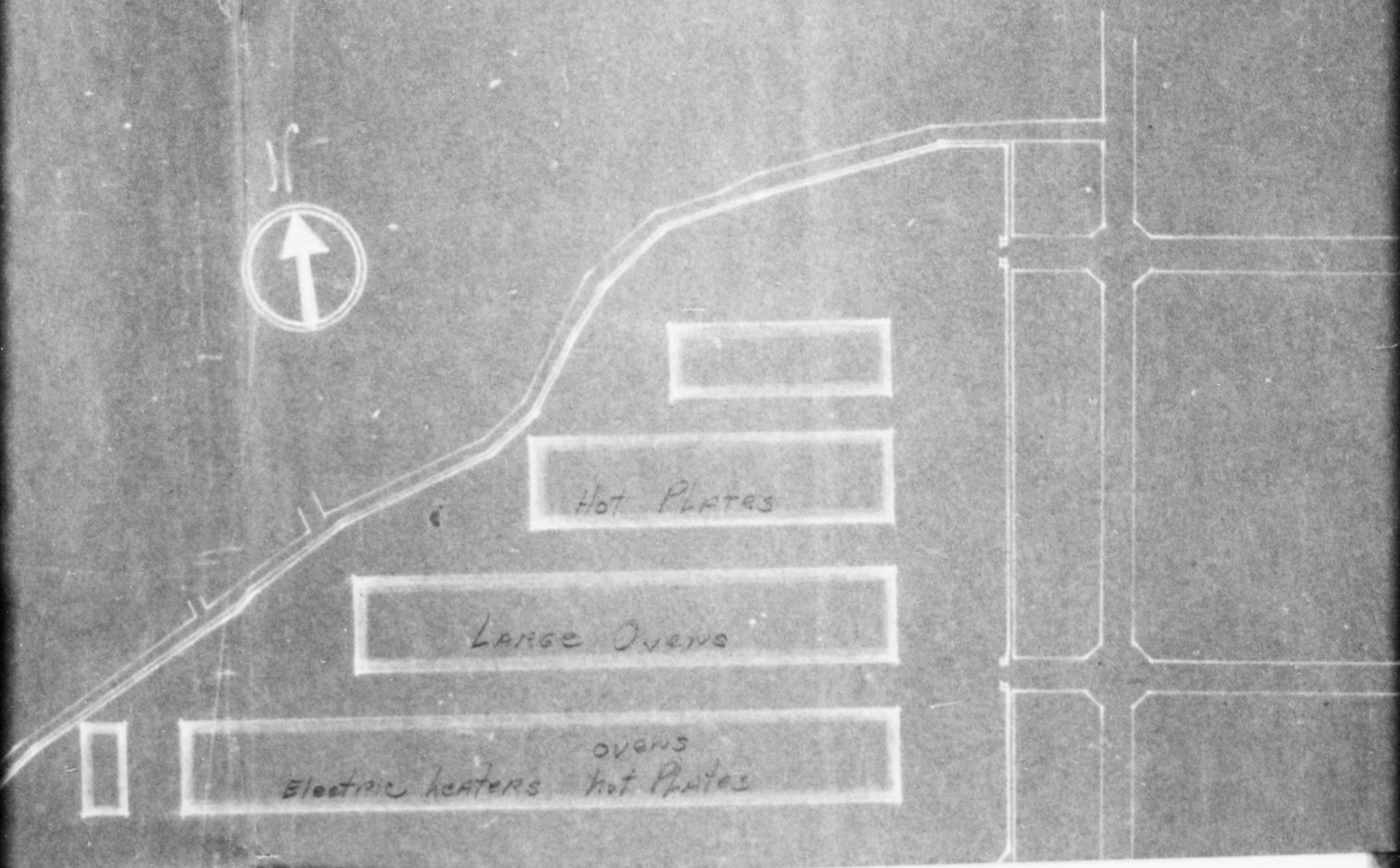


HOT

LARGE J

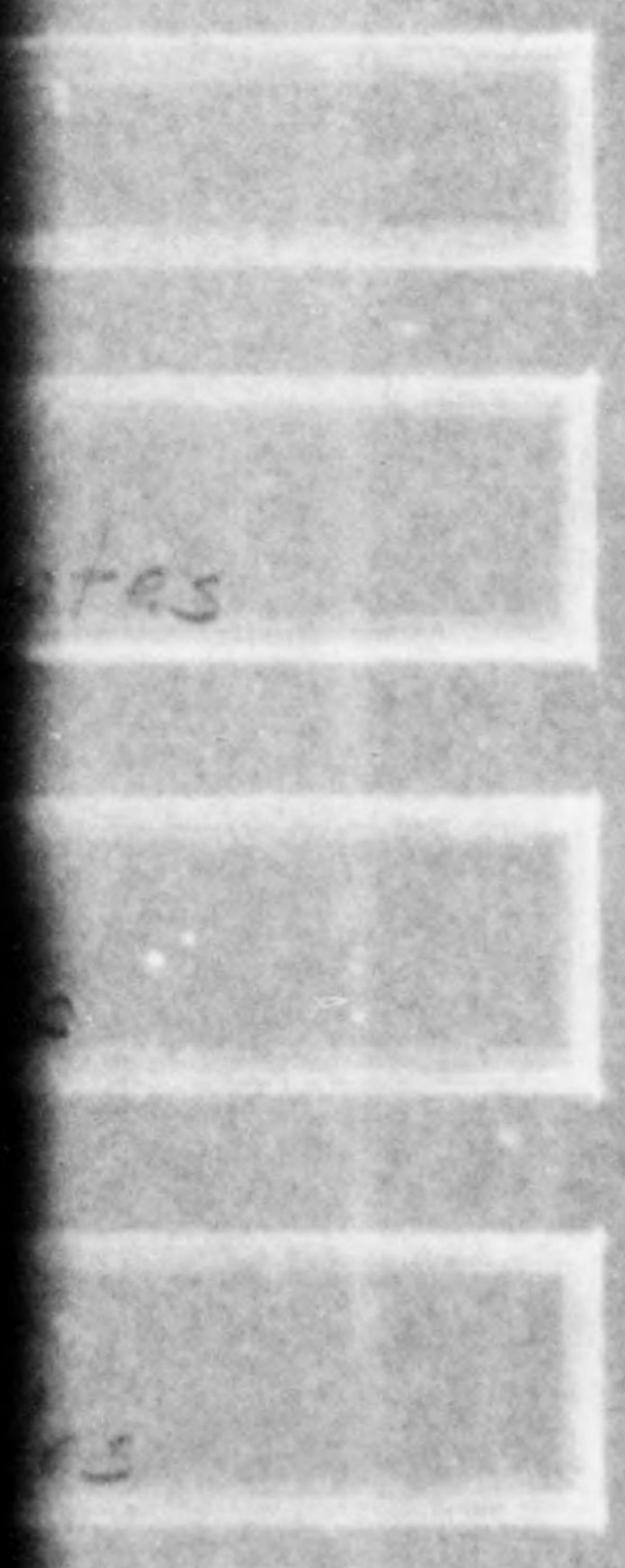
ELECTRIC HEATERS

775013



775013

株式會社
島津製作所



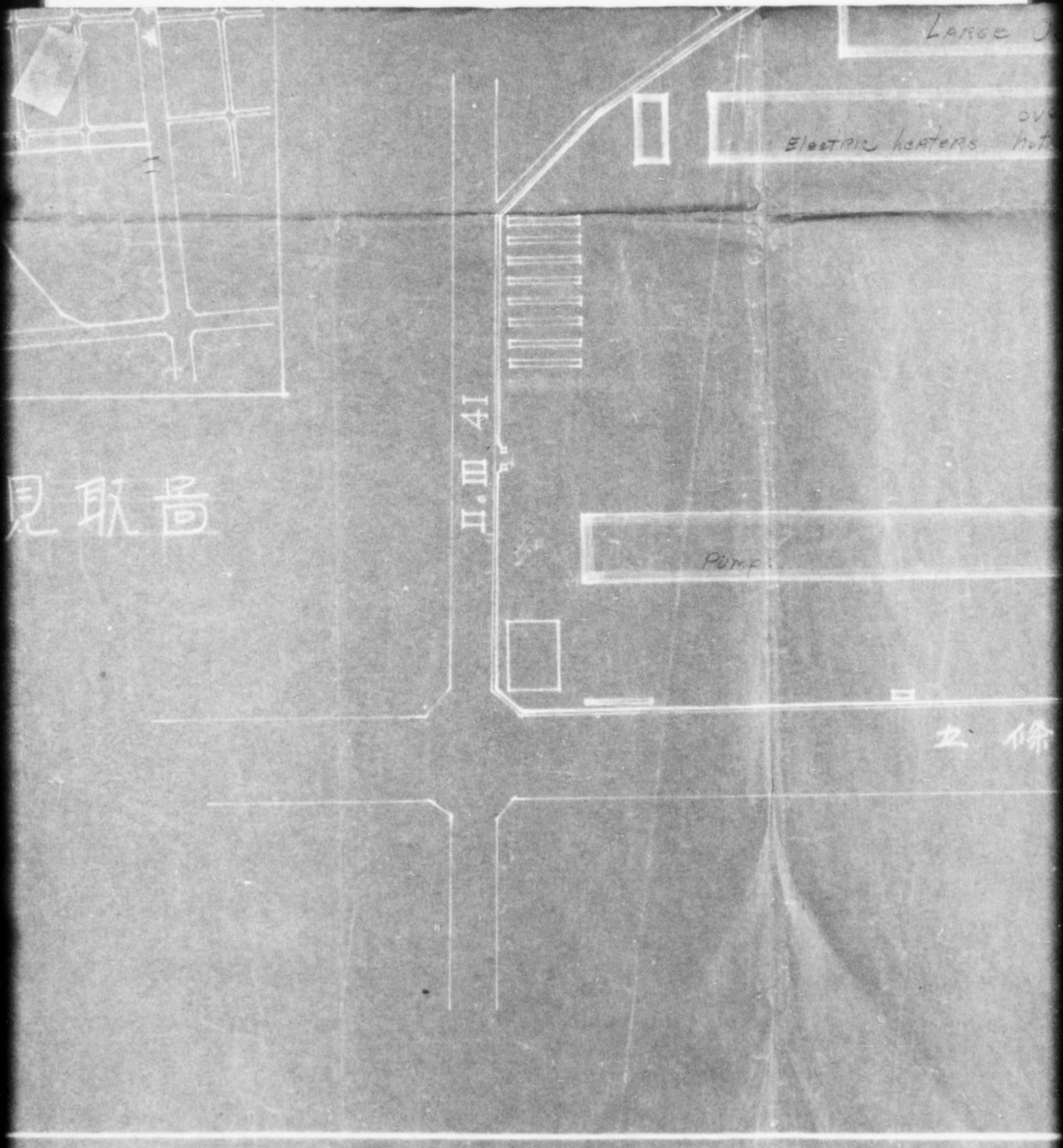
775013



附近見取景

17.3x1000 Y

775013



775013

LARGE Ovens

Electric heaters ^{ovens} hot Plates

Pumps

Office

五條通

I.III.I

775013

製作所五條工場

配置圖

I.III.I

株式會社島津製作所

部長	課長	係長	調査	設計	製圖	膳高
設計	昭和	—	—	膳高	昭和	—
名稱						100
圖面番號	2	—				