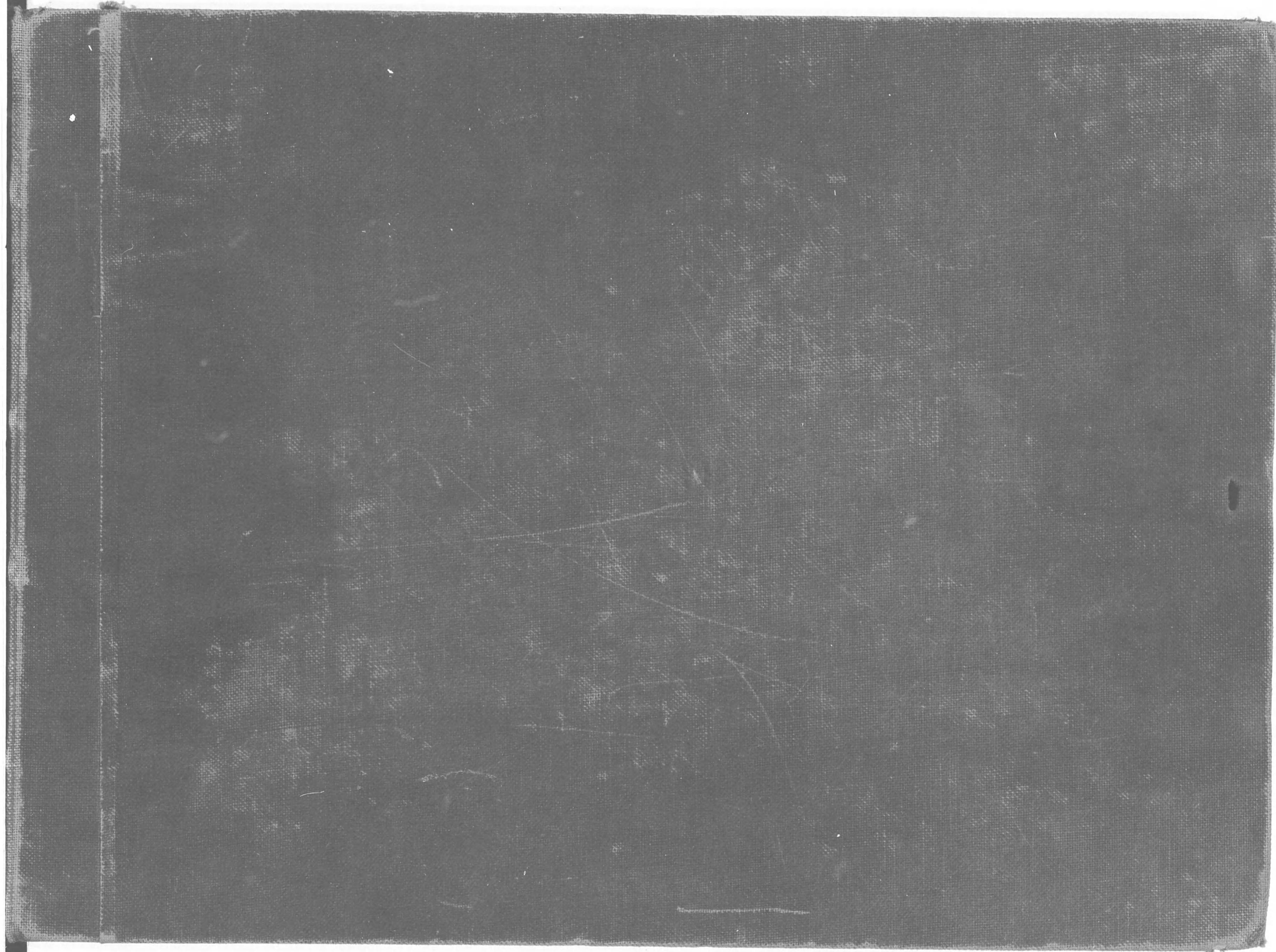


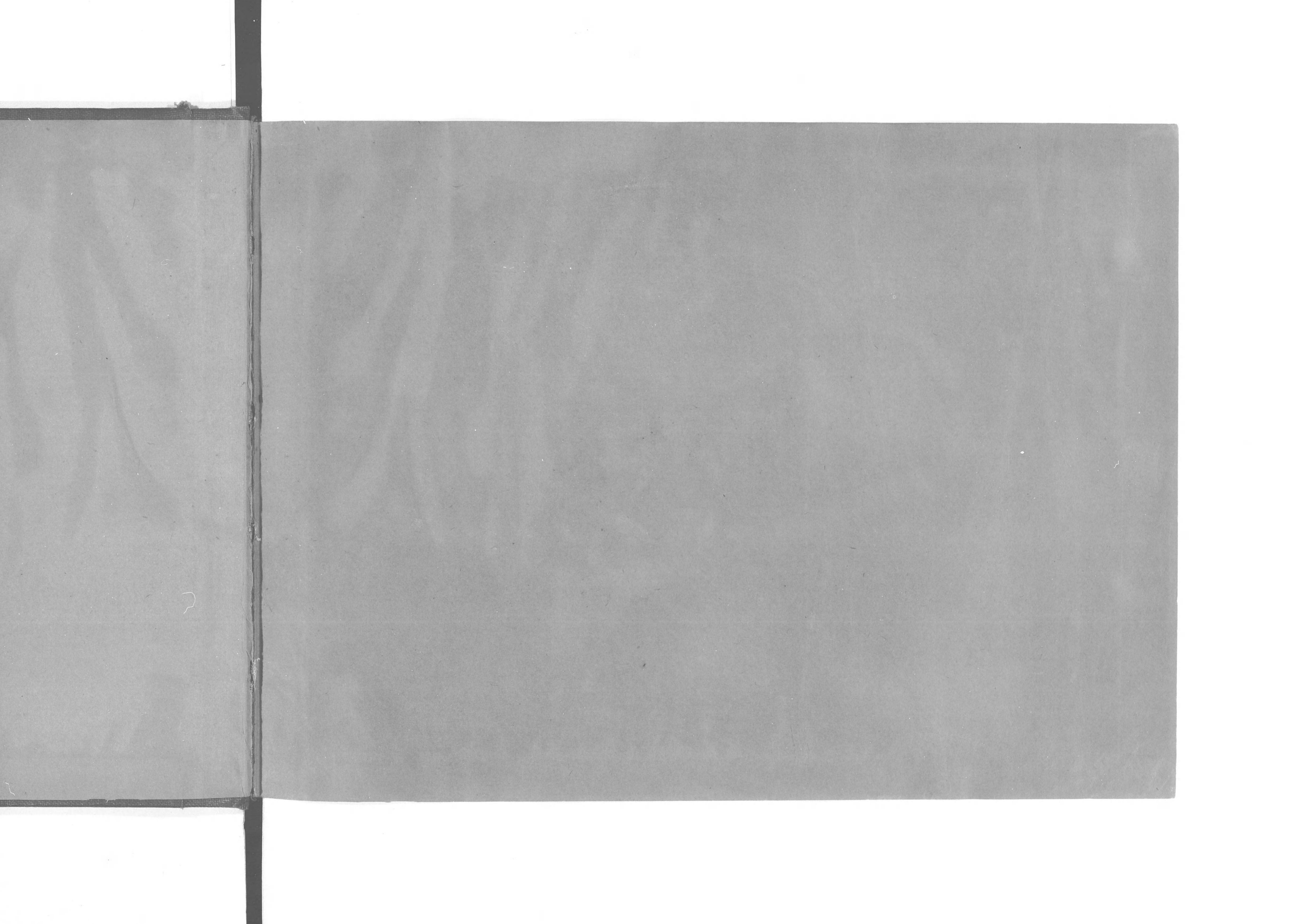
0 1 2 3 4 5 6 7 8 9 10 11 12 13 14 15





408  
26







138  
富士山  
の  
風景



SIGHTS AND SCENES IN FAIR JAPAN



# SIGHTS AND SCENES IN FAIR JAPAN.

日本風景園借真帖

REPRODUCED AND PUBLISHED

BY

**K. OGAWA, F. R. P. S.**

SOLE AGENTS

**KELLY AND WALSH, Limited**

*Yokohama, Hongkong, Shanghai and Singapore*

(ALL RIGHTS RESERVED)







## LIST OF ILLUSTRATIONS.

---

PLATE.

- I. The Main Approach to the Imperial Palace, Tokyo.
- II. The Cherry Season—The Uyeno Park, Tokyo.
- III. A new street looking toward the Imperial Palace, in Tokyo.
- IV. Display of Dolls and Toys on the Girl's Festival in March.
- V. The Imperial Palace Moat—The Buildings in the Centre are the Department of Justice, Law Courts, and the Office of the Imperial Navy.
- VI. One of the Entrances to the Mausolea of the Tokugawa Shoguns in Tokyo.
- VII. Tokyo 'en fete'—The approach to the Shim-bashi Station.
- VIII. A Private Parlour in Winter. (The white round vessels are the Hibachi with lighted pieces of charcoal carefully arranged in the soft ashes in them. There is one Hibachi and a silk cushion provided for each visitor).
- IX. The Wistaria in Blossom.
- X. A Busy Canal in Tokyo, with Lines of Ware-houses on Both Sides.
- XI. An Iris Garden in a Suburb of Tokyo.

PLATE.

- XII. A Room in a Modern Department Store in Tokyo.
- XIII. Lotus Lake in a Tokyo Park.
- XIV. The celebrated Daibutsu, a Huge Bronze Statue at Kamakura. (Kamakura was the seat of the First Military Government established in 1192 A.D.).
- XV. Enoshima, a Popular Excursion Resort near Tokyo.
- XVI. The 'Odori,' a Dramatic Dance in Old Time Costume.
- XVII. Miyanoshita, a Favourite Hot Spring Resort, in the Hakone Mountains.
- XVIII. Peony Beds in Tokyo.
- XIX. A View of the Sacred Mt. Fuji. Height 12,370 feet.
- XX. A Glimpse of the Pacific Ocean from a Train on the Tokaido Line.
- XXI. The Fancy Carps made of Paper, Silk or Cotton. They are hung up on the poles in celebration of Boy's Festival Day in Early May. (The carp is an emblem of indomitable courage and perseverance always pushing to the front).



PLATE.

- XXII. Grand Shrine of Ise, of the Highest Sanctity in Japan; Dedicated to the Imperial Ancestress. (The buildings show pure archaic style of Japanese architecture).
- XXIII. The Cha-no-Yu, or the Tea-Ceremony.
- XXIV. The Temple of Kiyomidzu at Kyoto.
- XXV. The Kinkakuji—'Golden Pavilion'—Kyoto. A Villa of an Ashikaga Shogun. (The Ashikaga Shogunate came into power in the early part of XIIIth Century A.D. and was overthrown in the first part of XVIth Century).
- XXVI. A Summer Evening on the Kamogawa River, Kyoto.
- XXVII. The Higashi Honganji—A Buddhist Temple in Kyoto.
- XXVIII. The Gate of the Kasuga Shrine at Nara and the Sacred Maidens of the Temple in Their Full Dress.
- XXIX. A Scene near Kyoto.
- XXX. Horyuji, a Seventh Century Temple near Nara.
- XXXI. Posing as the Ancient Warriors.
- XXXII. A Tea-Plantation with the Leaf-Pickers at Work, a Scene in Uji near Kyoto.
- XXXIII. Dotombori, a Popular Amusement Quarter in Osaka.

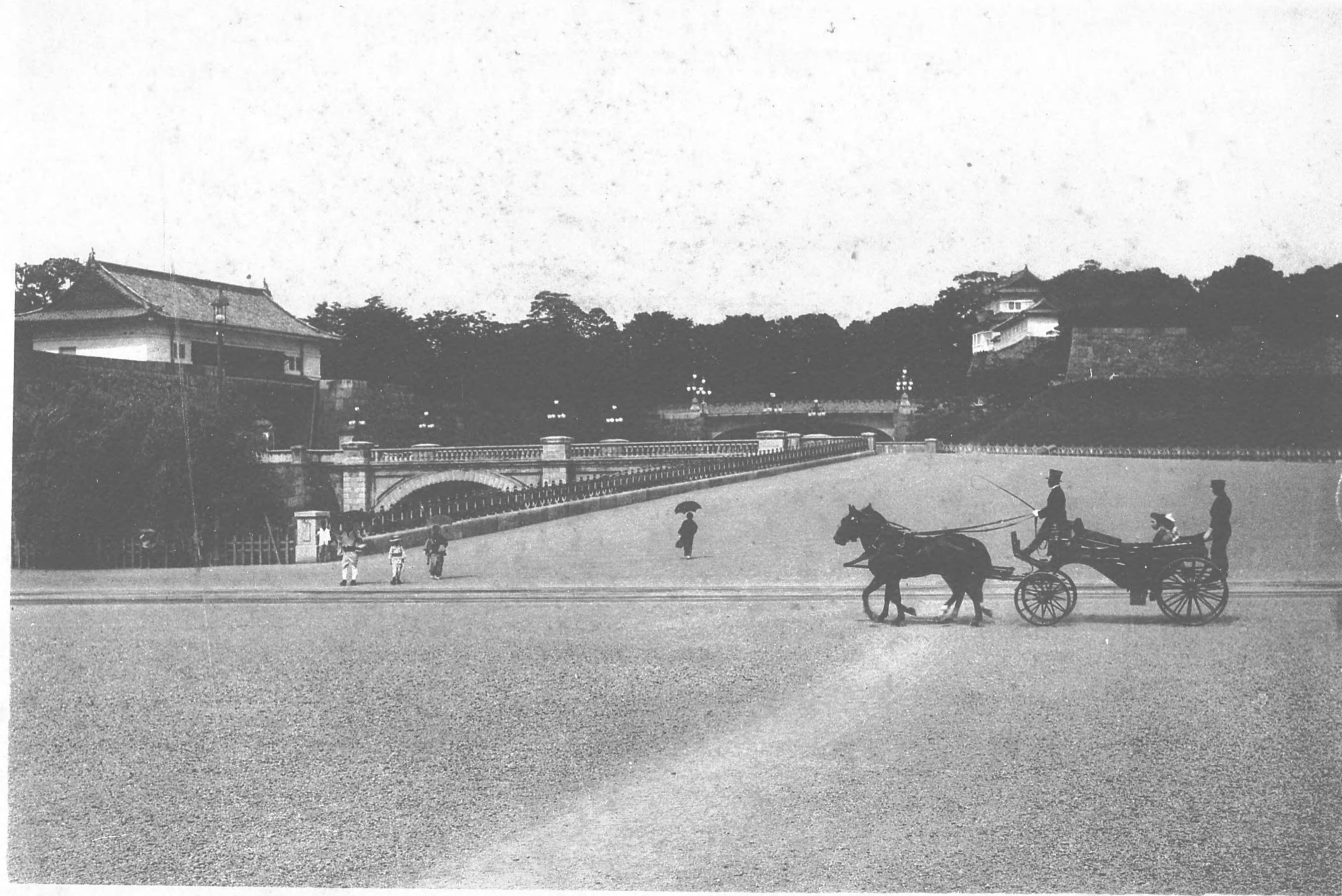
PLATE.

- XXXIV. Ama-no-hashidate—a Bridge-like Peninsula, lined with pines, in the Province of Tango on the Sea of Japan.
- XXXV. Glories of Autumn in Japan.
- XXXVI. The Feudal Castle at Himeji.
- XXXVII. A Scene in the celebrated "No" Dance.
- XXXVIII. A Peep of the Inland Sea, near Onomichi.
- XXXIX. Playing on the 'Koto.'
- XL. Miyajima, a Celebrated Island in the Inland Sea.
- XLI. Kintai-bashi, a Bridge of Unique Construction in Southern Japan.
- XLII. Chiyo-no-matsubara,—a Celebrated Pine Grove in Kyushu.
- XLIII. The Ikebana, or Flower Arrangement. (One of the aesthetic accomplishments of both sexes).
- XLIV. Mt. Aso, an Active Volcano in Kyushu.
- XLV. In the Grounds of the Nikko Temples.
- XLVI. Avenue of Stately Cryptomerias with a Buddhist Monk on his Itinerary.
- XLVII. A Display of Chrysanthemums.
- XLVIII. Matsushima near Sendai,—an Archipelago of Pine-clad Islets.
- XLIX. A Characteristic Japanese Dance.
- L. A Typical Landscape Garden.



*The Main Approach*





*The Main Approach to the Imperial Palace, Tokyo.*

橋 重 二 城 皇

dge-like Peninsula,  
Province of Tango on

an.

oji.

"No" Dance.

near Onomichi.

Island in the Inland

Unique Construction

Celebrated Pine Grove

Arrangement. (One

ments of both sexes).

ino in Kyushu.

enko Temples.

erias with a Buddhist

nums.

—an Archipelago of

Dance.

arden.

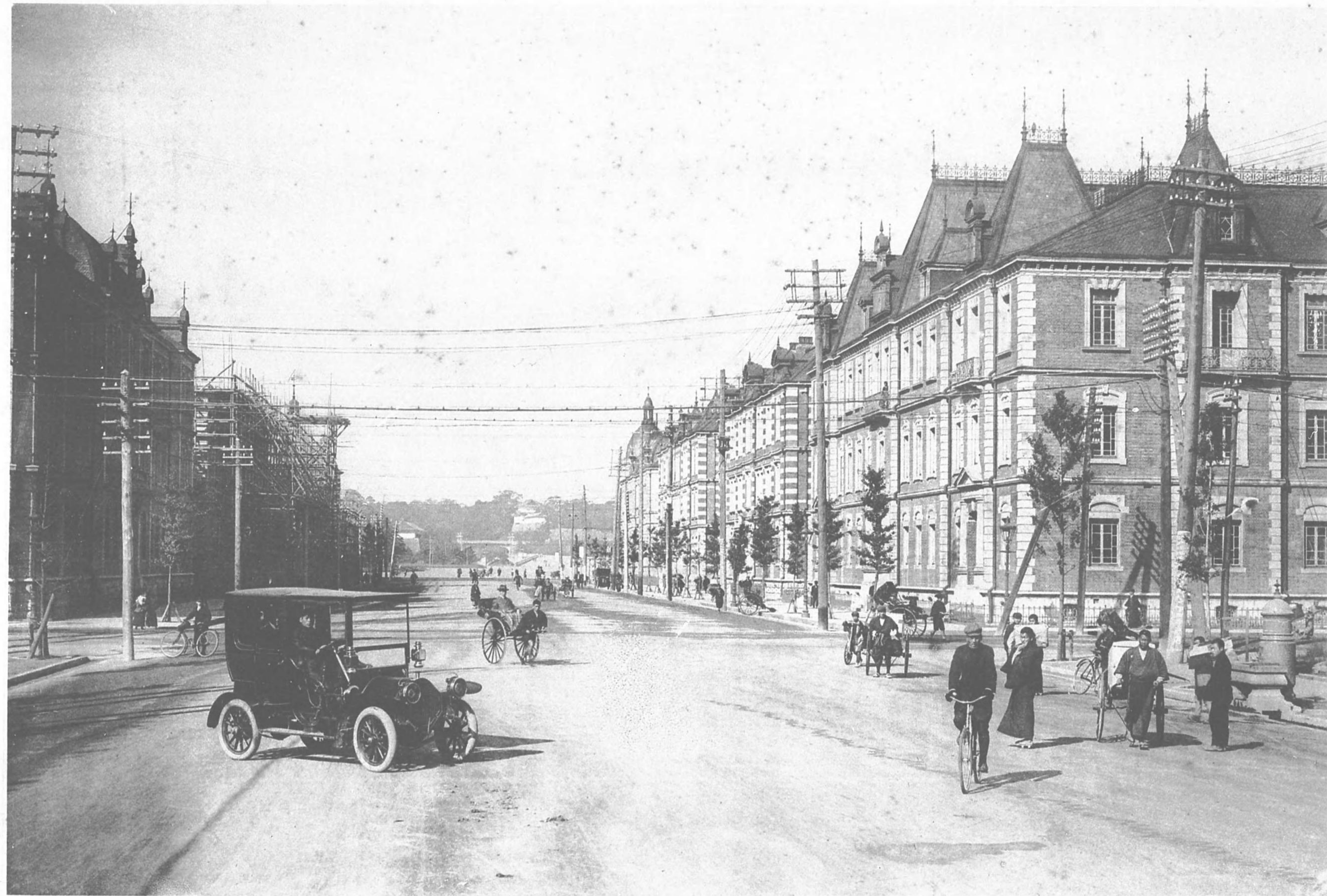




*The Cherry Season—The Ueno Park, Tokyo.*

園 公 野 上





*A new street looking toward the Imperial Palace, in Tokyo.*

八重洲町通





*Display of Dolls and Toys on the Girl's Festival in March.*

祭 雛

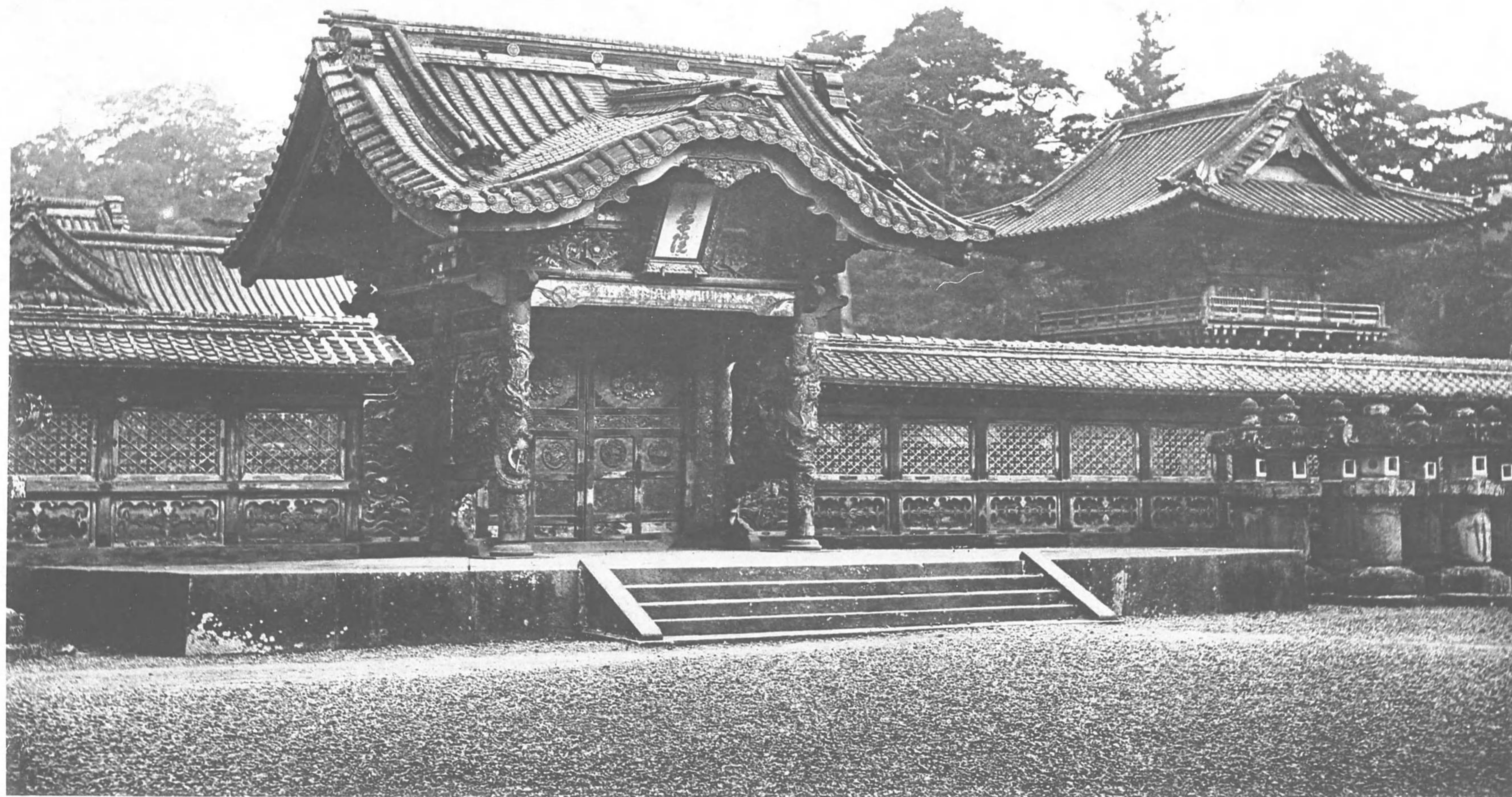




*The Imperial Palace Moat—The Buildings in the Centre  
are the Department of Justice, Law Courts,  
and the Office of the Imperial Navy.*

三宅坂リヨ司法省ヲ望ム





*One of the Entrances to the Mausolea of the  
Tokugawa Shoguns in Tokyo.*

芝 靈 廟





*Tokyo 'en fete'—The approach to the Shimbashi Station.*

新橋停車場





*A Private Parlour in Winter. (The white round vessels are the Hibachi with lighted pieces of charcoal carefully arranged in the soft ashes in them. There is one Hibachi and a silk cushion provided for each visitor.)*





*The Wistaria in Blossom.*

藤ノ戸井龜





*A Busy Canal in Tokyo, with Lines of Warehouses  
on Both Sides.*

岸河市日四京東





*An Iris Garden in a Suburb of Tokyo.*

蒲 菖 ノ 田 蒲





*A Room in a Modern Department Store in Tokyo.*

場列陳店服吳越三





*Lotus Lake in a Tokyo Park.*

池 忍 不





*The celebrated Daibutsu, a Huge Bronze Statue at  
Kamakura.  
(Kamakura was the seat of the first Military Govern-  
ment established in 1192 A.D.)*

鎌倉ノ大佛





*Enoshima, a Popular Excursion Resort near Tokyo.*

鳴ノ江





*The 'Odori,' a Dramatic Dance in Old Time Costume.*

踊 舞



PLATE XVII.



*Miyanoshita, a Favourite Hot Spring Resort, in the  
Hakone Mountains.*

下ノ宮根函





*Peony Beds in Tokyo.*

丹 杜 ノ 目 ッ 四





*A View of the Sacred Mt. Fuji, Height 12,370 ft.*

山 士 富

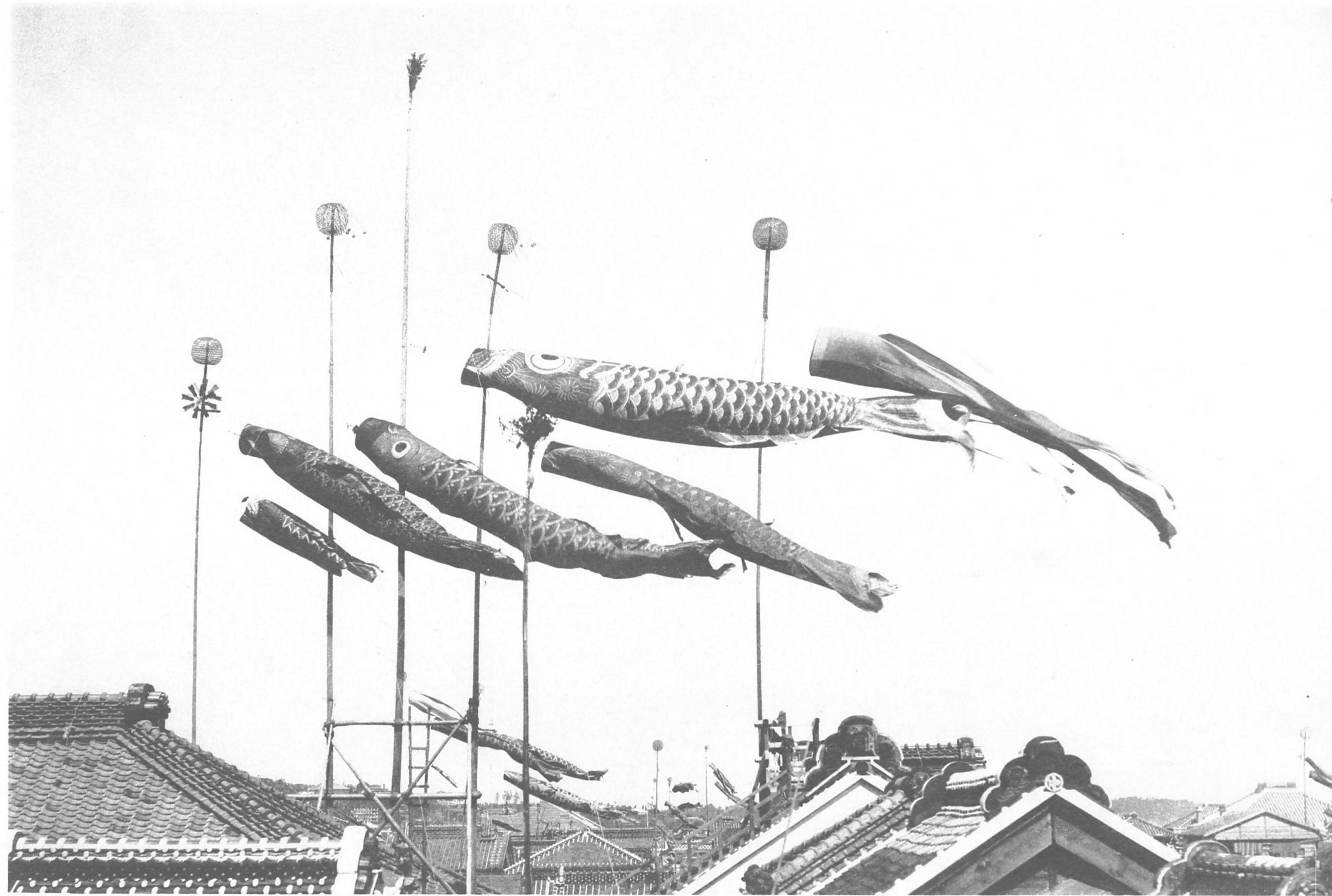




*A Glimpse of the Pacific Ocean from a Train on the Tokaido Line.*

東海汽道車中ヨリ太平洋沿岸

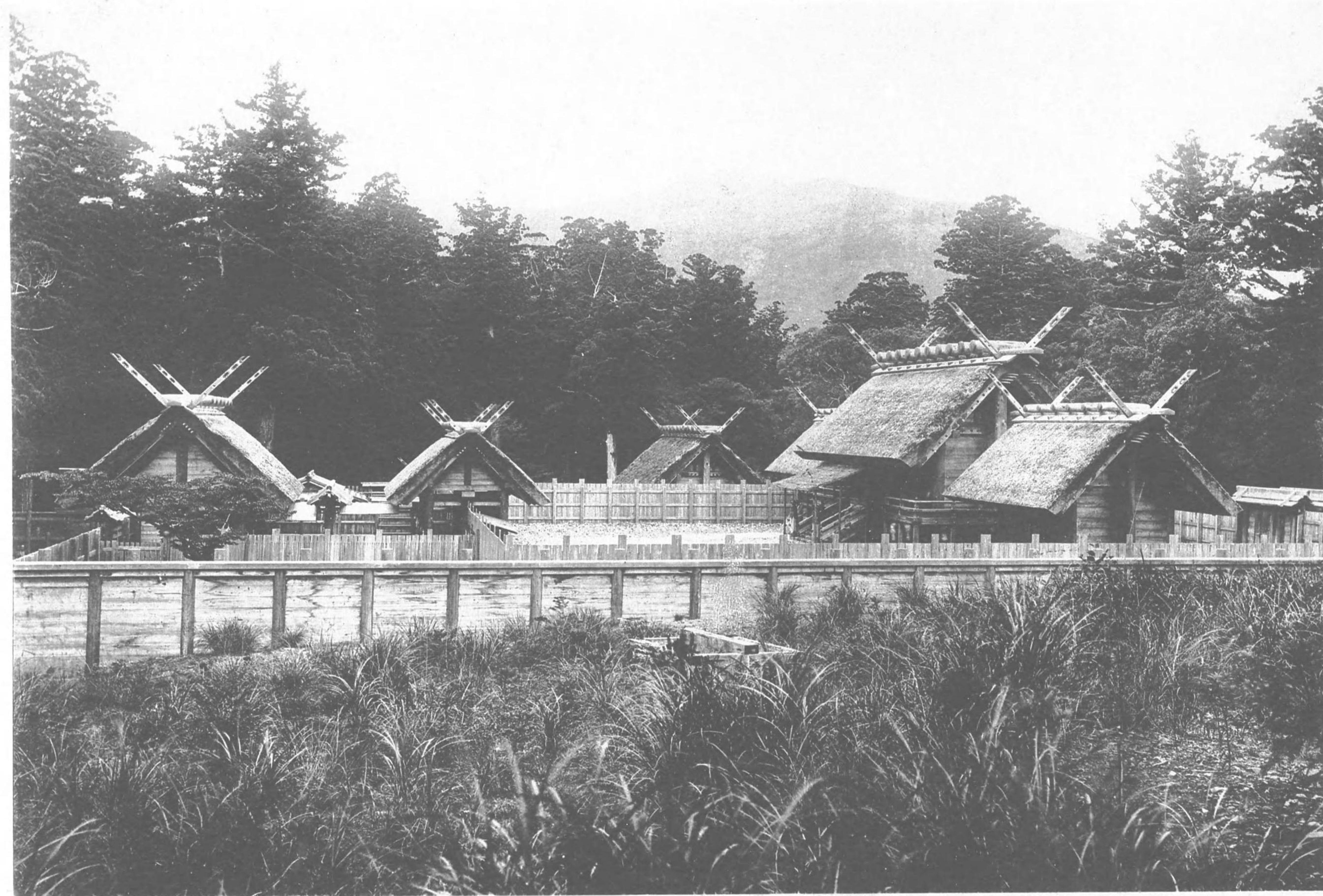




*The Fancy Carps made of Paper, Silk or Cotton. They are hung up on the poles in celebration of Boy's Festival Day in Early May. (The carp is an emblem of indomitable courage and perseverance always pushing to the front.)*

幟 月 五





*Grand Shrine of Ise, of the Highest Sanctity in Japan; Dedicated to the Imperial Ancestress. (The buildings show pure archaic style of Japanese architecture.)*

伊勢大勢廟





*The Cha-no-Yu, or the Tea-Ceremony.*

湯ノ茶





*The Temple of Kiyomidzu at Kyoto.*

寺 水 清 都 京





*The Kinkakuji—'Golden Pavilion'—Kyoto,  
a Villa of an Ashikaga Shogun.  
(The Ashikaga Shogunate came into power in the early part of  
XIIIth Century A.D. and was overthrown in the  
first part of XVIIth Century.)*

寺 閣 金 都 京





*A Summer Evening on the Kamogawa River, Kyoto.*

涼納川鴨都京





*The Higashi Honganji—A Buddhist Temple in Kyoto.*

寺 願 本 東 都 京





*The Gate of the Kasuga Shrine at Nara and the Sacred Maidens  
of the Temple in Their Full Dress.*

奈良春日社頭

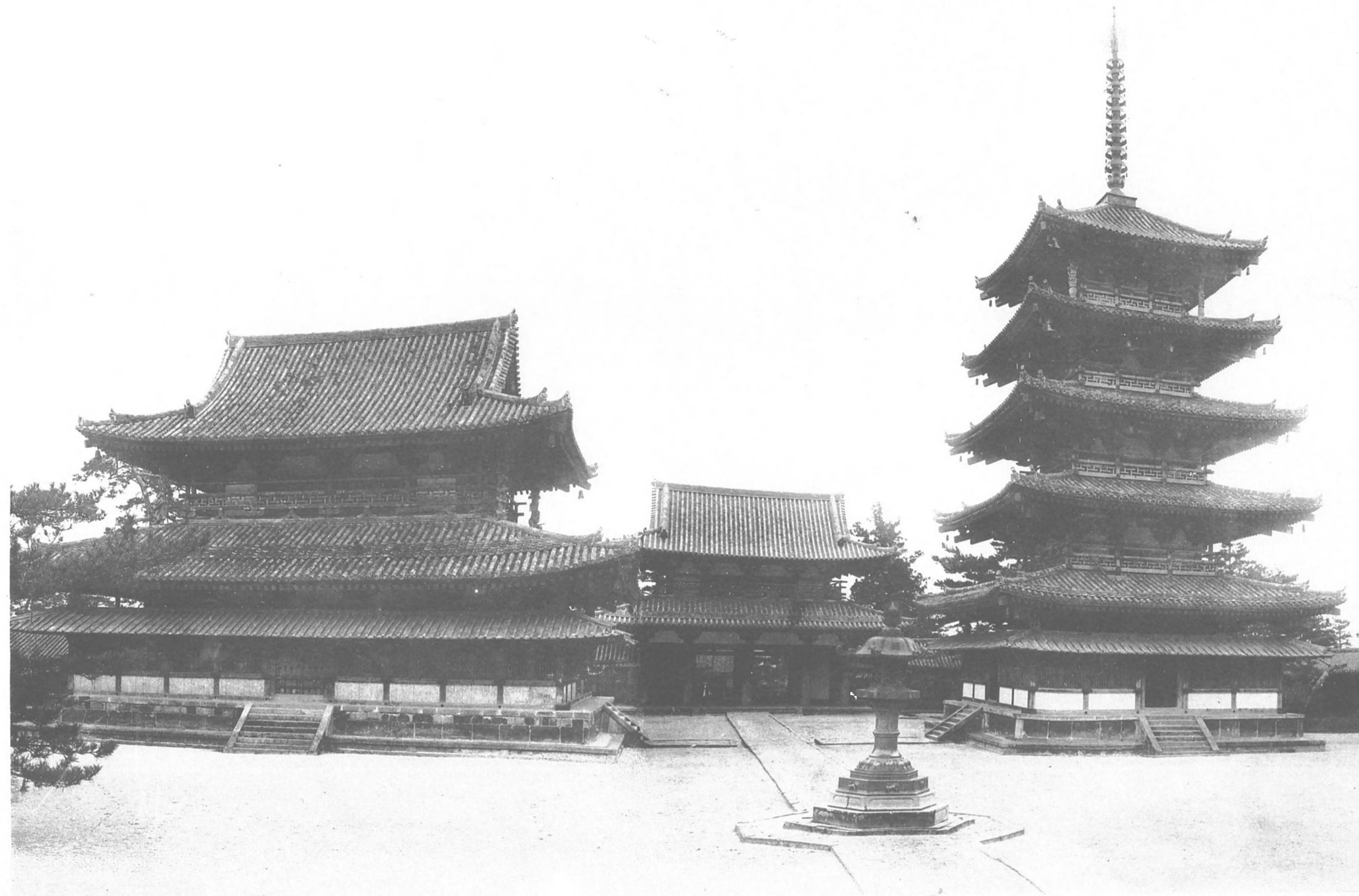




*A Scene near Kyoto.*

山 嵐 都 京





*Hōryū-ji, a Seventh Century Temple near Nara.*

寺 隆 法 良 奈





*Posing as The Ancient Warriors.*

者 武 鎧





*A Tea-Plantation with the Leaf-Pickers at Work,  
a Scene in Uji near Kyoto.*

摘 茶





*Dotombori - a Popular Amusement Quarter in Osaka.*

大坂道頓堀





*Ama-no-hashidate—a Bridge-like Peninsula, lined with pines, in the Province of Tango on the Sea of Japan.*

(一ノ景三) 立橋ノ天





*Glories of Autumn in Japan.*

葉 紅



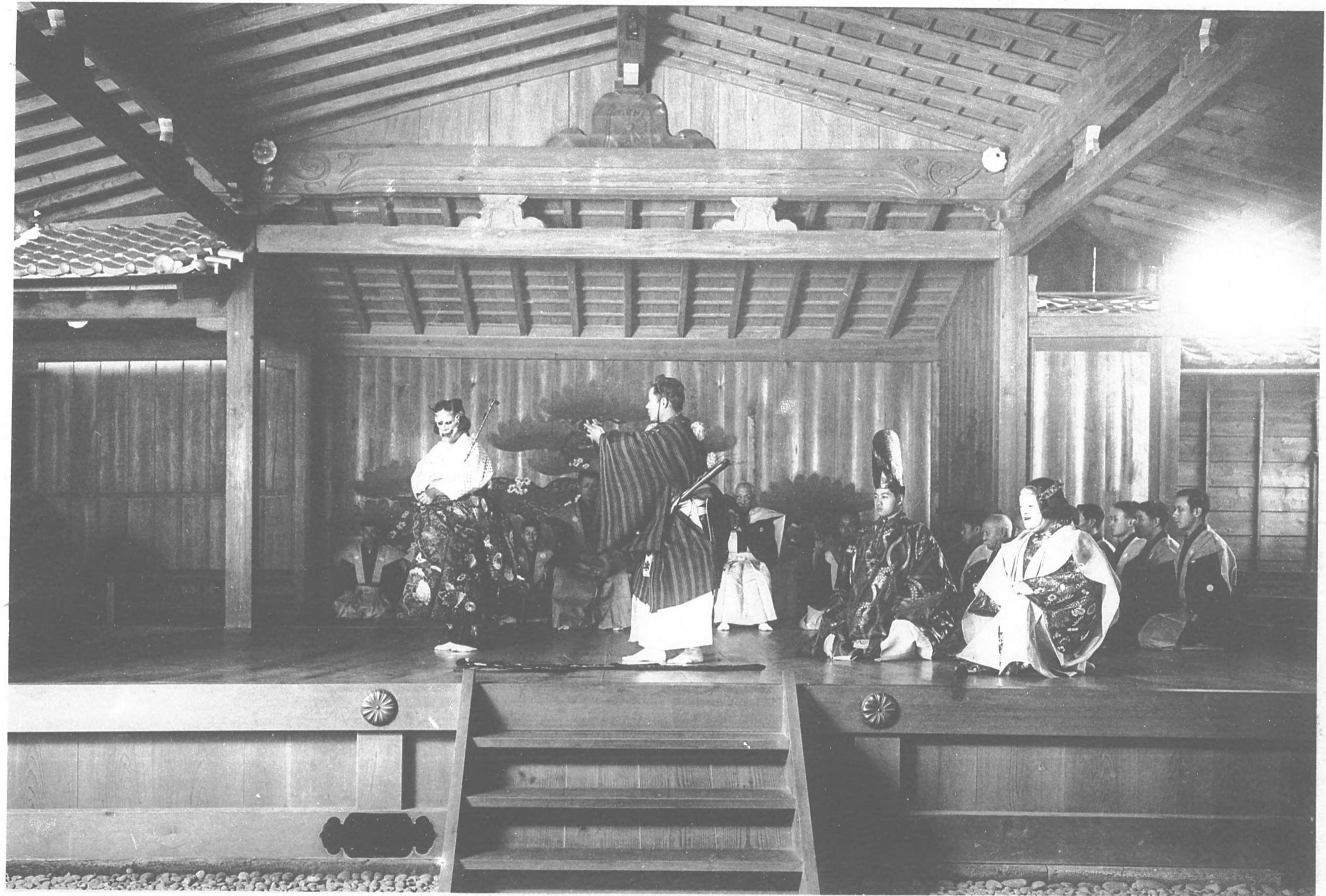
PLATE XXXVI.



*The Feudal Castle at Himeji.*

城 路 姫

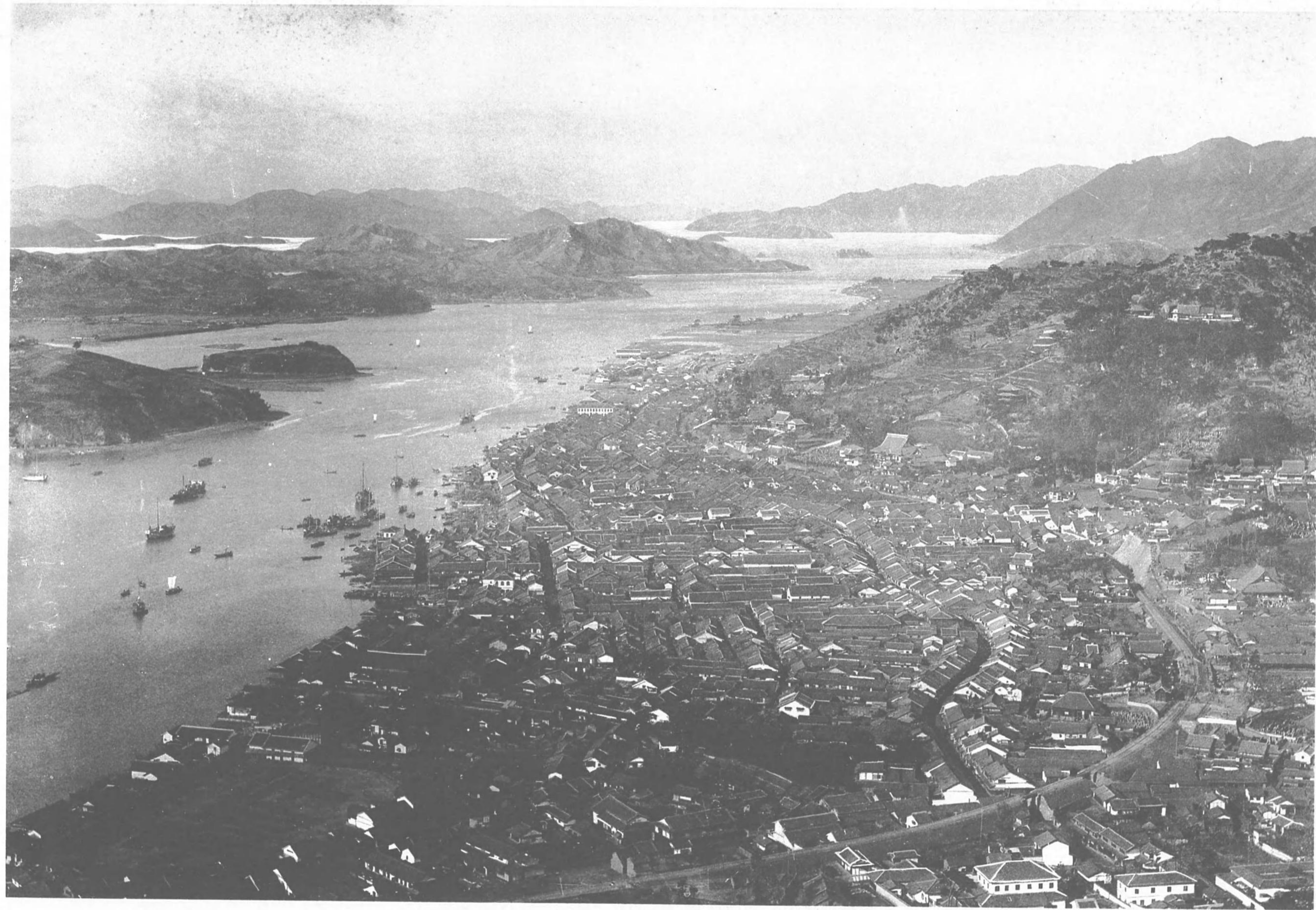




*A Scene in the celebrated "No" Dance.*

樂 能





*A Peep of the Inland Sea, near Onomichi.*

備後尾ノ道港





*Playing on the 'Koto'.*

琴 彈



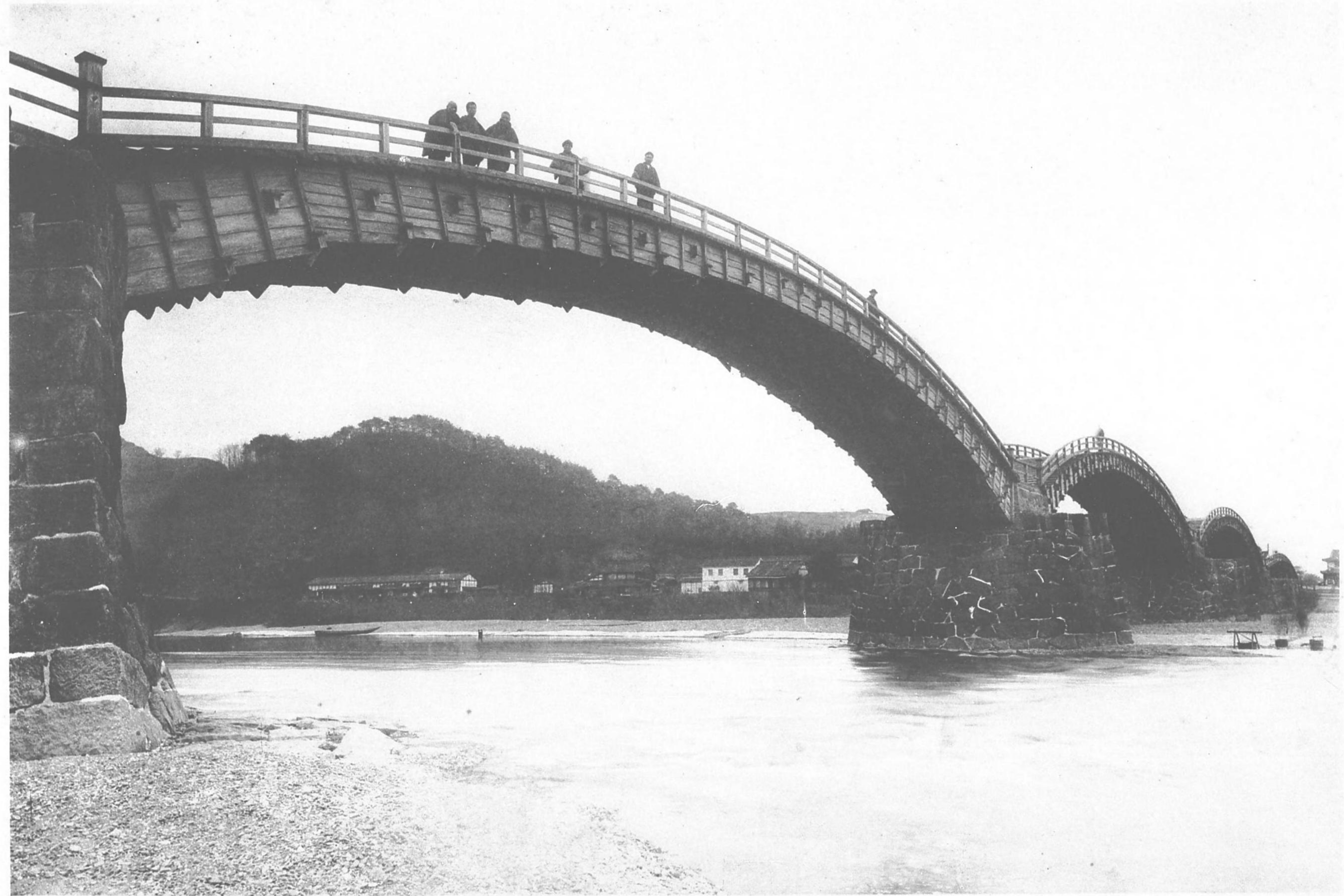
PLATE XL



*Miyajima, a Celebrated Island in the Inland Sea.*

(一ノ景三) 嶋 宮





*Kintai-bashi, a Bridge of Unique Construction  
in Southern Japan.*

橋 帶 錦





*Chiyo-no-matsubara,—a Celebrated Pine  
Grove in Kyushu.*

原松ノ代千前筑





*The Ikebana, or Flower Arrangement. (One of the aesthetic accomplishments of both sexes.)*

花 挿





*Mt. Aso, an Active Volcano in Kyushu.*

山 蘇 阿





*In the Grounds of the Nikko Temples.*

日 光 靈 廟





*Avenue of Stately Cryptomerias with a Buddhist Monk on his Itinerary.*

木並杉光日





*A Display of Chrysanthemums.*

菊 花 壇





*Matsushima near Sendai,—an Archipelago  
of Pine-clad Islets.*

(一ノ景三) 嶋 松



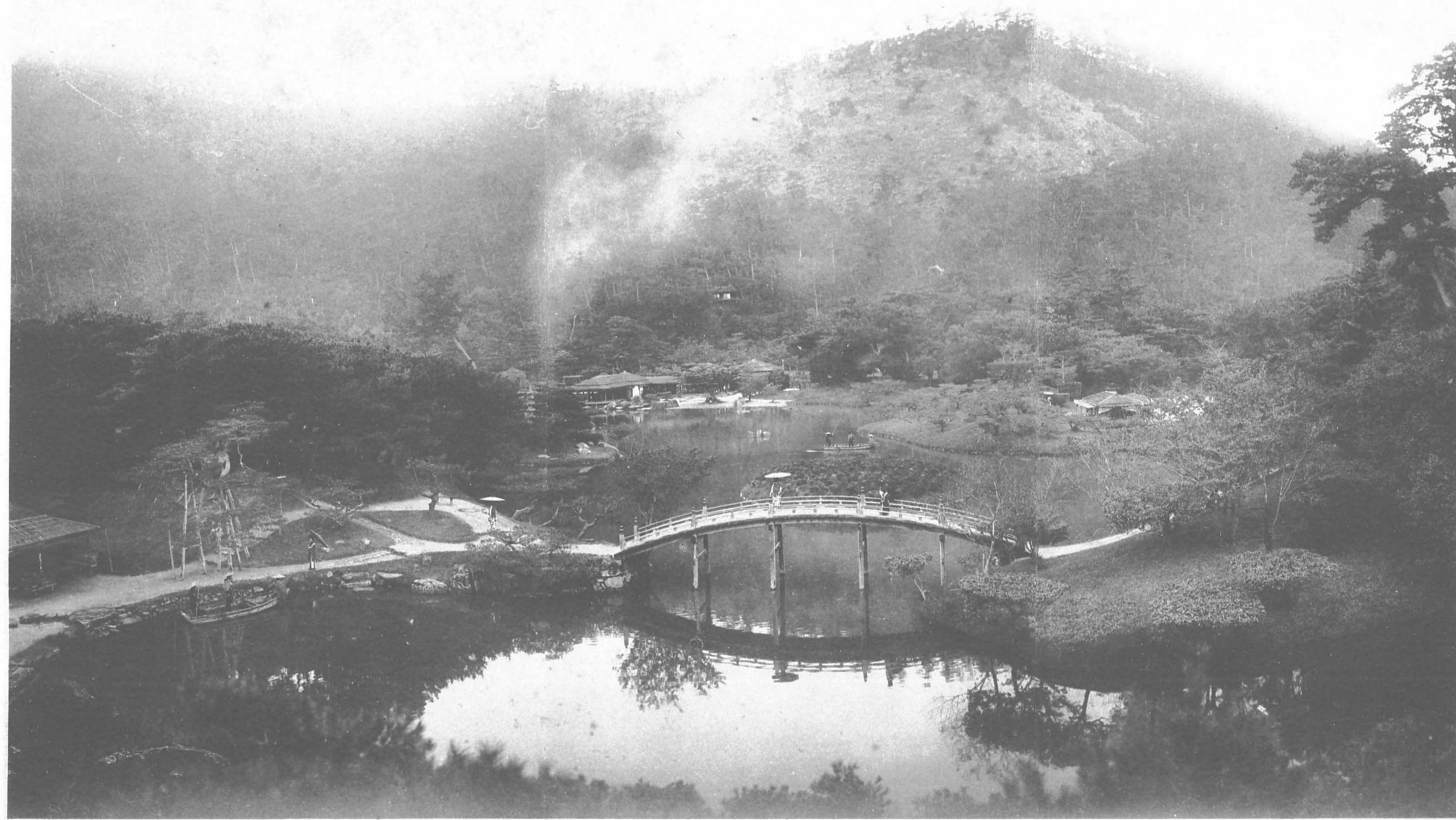


*A Characteristic Japanese Dance.*

新橋踊



PLATE I.



*A Typical Landscape Garden.*

高松栗林公園



明治四十三年十一月十三日印刷  
明治四十三年十一月十七日發行

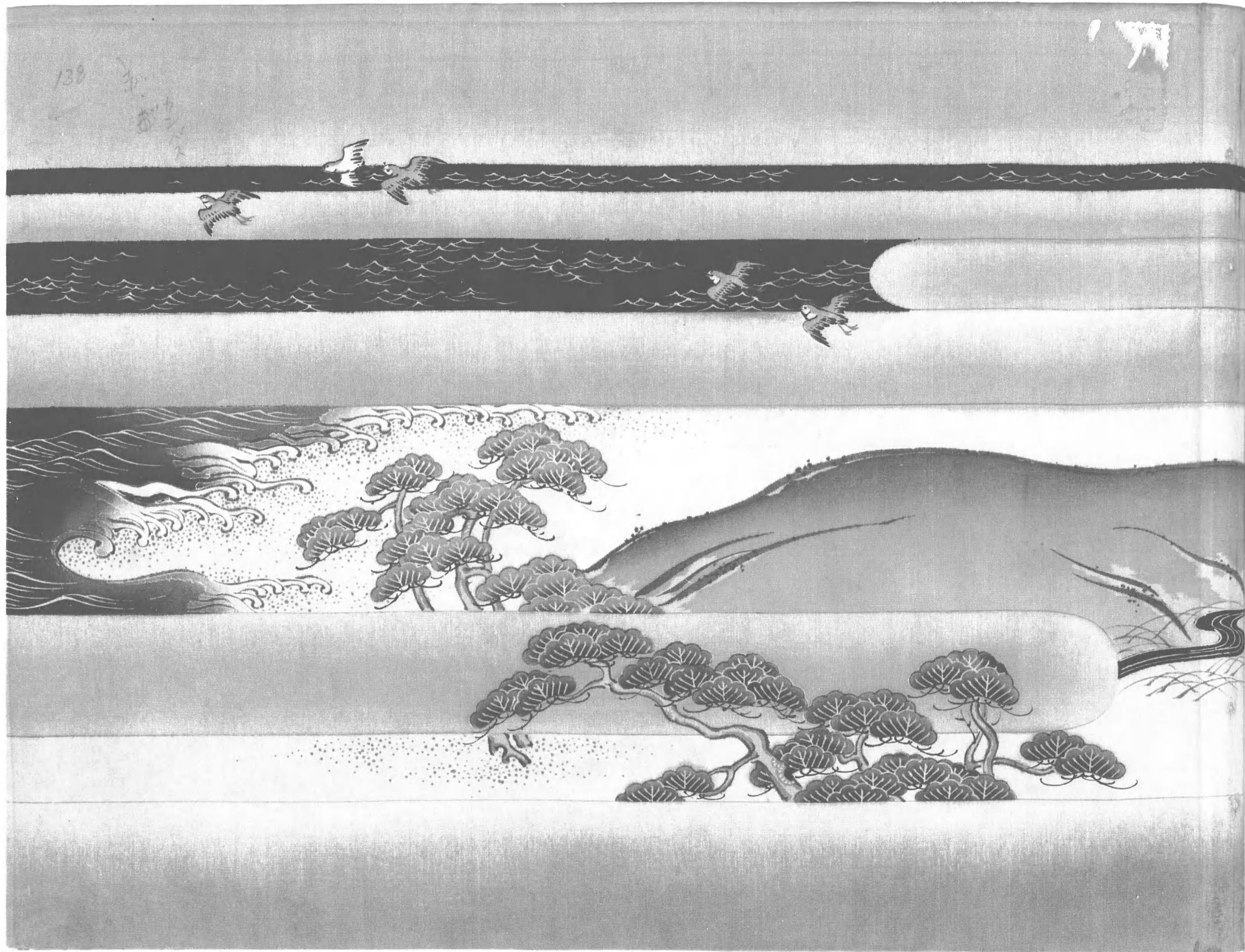
發行兼  
印刷者

小川一真  
東京市京橋區  
日吉町十三番地

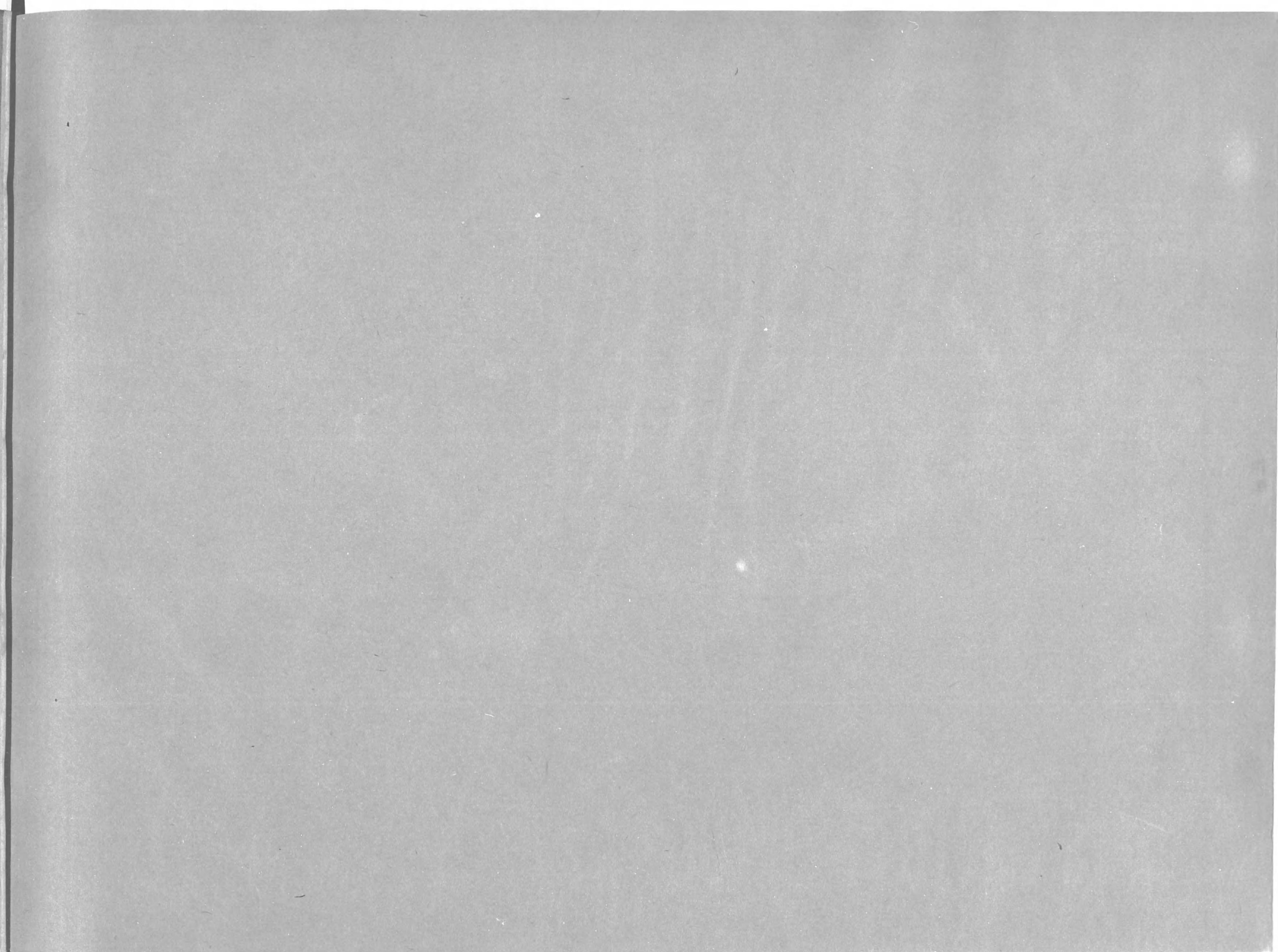
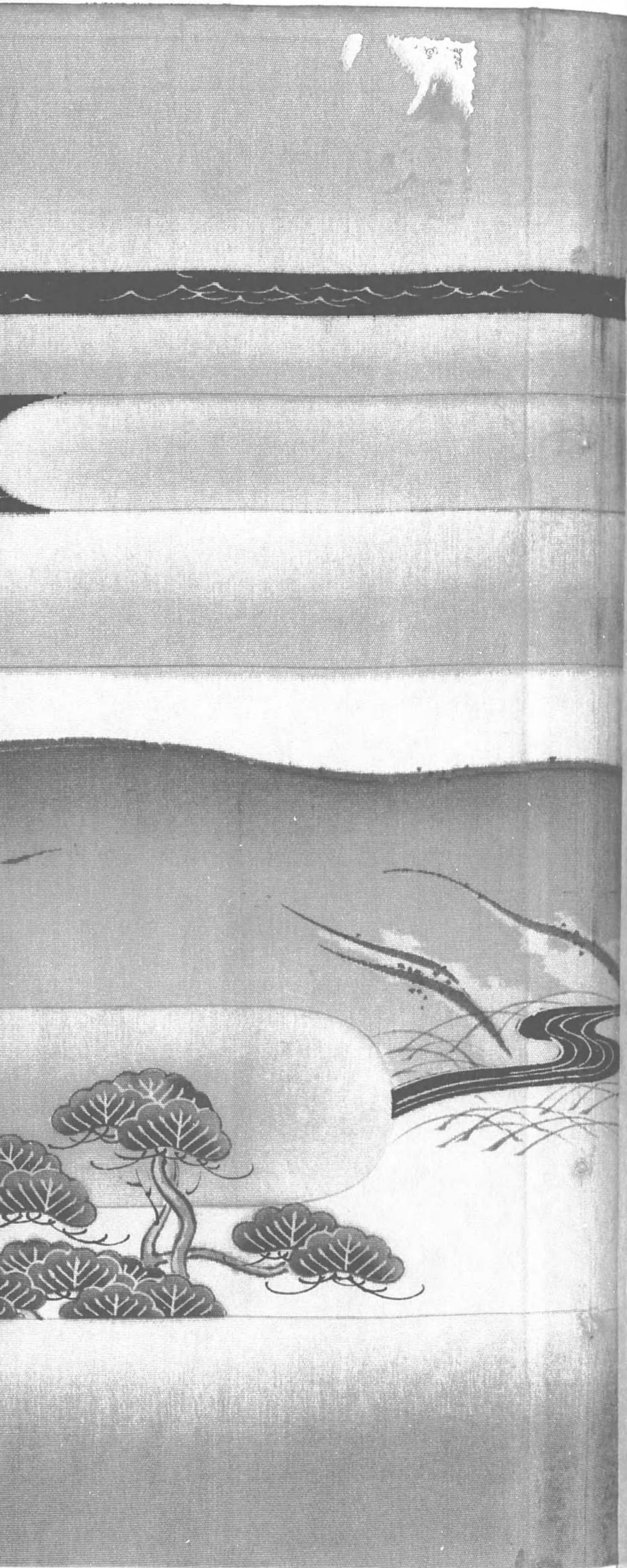
印刷兼  
發賣所

小川寫真製版所  
東京市京橋區  
日吉町十三番地











08  
26

Ⓜ

終