

Some taxonomic notes on the genus *Oberea* Dejean, 1835 from Asia (Coleoptera, Cerambycidae, Lamiinae)

Zhu Li¹, Giulio Cuccodoro², Li Chen¹

1 College of Plant Protection, Southwest University, Chongqing 400715, China **2** Muséum d'histoire naturelle, CH-1211 Genève 6, Switzerland

Corresponding author: Li Chen (lichen57@swu.edu.cn)

Academic editor: F. Vitali | Received 14 November 2016 | Accepted 22 December 2016 | Published 27 January 2017

<http://zoobank.org/641FF4A2-10CE-4B2A-850B-AB3C3ADA5909>

Citation: Li Z, Cuccodoro G, Chen L (2017) Some taxonomic notes on the genus *Oberea* Dejean, 1835 from Asia (Coleoptera, Cerambycidae, Lamiinae). ZooKeys 647: 121–136. <https://doi.org/10.3897/zookeys.647.11120>

Abstract

In the current work, the following taxonomic changes of genus *Oberea* Dejean, 1835 are proposed: *O. flavescens* Breuning, 1947, **rest. stat.**; *O. toi* Gressitt, 1939, **rest. stat.**; *O. sylvia* Pascoe, 1858, **rest. stat.**; *O. taiwana* Matsushita, 1933 = *O. taihokuensis* Breuning, 1962, **syn. n.**; *O. sumbana* Breuning, 1961 = *O. antennata* Franz, 1972, **syn. n.**; *O. brevithorax* Gressitt, 1939 is newly recorded from Vietnam.

Keywords

New country record, new synonym, *Oberea*, restoration name, taxonomy

Introduction

The genus *Oberea* Dejean, 1835, belonging to the subfamily Lamiinae, family Cerambycidae, consists of more than 300 species worldwide. The two monographic books on the taxonomy of Cerambycidae from China (Gressitt 1951) and Laos (Rondon and Breuning 1970), the most important works on *Oberea* in Asia, treated 77 and 20 *Oberea* species, respectively. *Oberea* worldwide was revised by Breuning (1960–1962). Some species were downgraded to infrasubspecific rank in Breuning's work basing on the similarity of body coloration (Breuning 1960–1962), and some of them were restored or described as new species (Kurihara and Ohbayashi 2007; Kurihara 2009; Li et al. 2014, 2016). During the recent study, some further taxonomic clarification of the genus *Oberea* is presented in the current work, based on examination of types.

Material and methods

Pictures of adult morphology are composites taken using a digital camera mounted onto a Leica MZ Apo dissecting microscope and subsequently processed using Auto-montage® software. For detailed examination, genitalia were extracted from specimens softened in water, cleared in 10% KOH, observed in water on glass microscope slides, then transferred into ethanol 70% and stored in capsules mounted on the same pin as the specimens. Drawings were made using a drawing tube mounted onto a compound microscope.

The following collection abbreviations are used in the text.

BMNH	The Natural History Museum, London, UK
MNHN	Muséum national d'Histoire Naturelle, Paris, France
MHNG	Muséum d'histoire naturelle, Geneva, Switzerland
MHNL	Musée des Confluences, Lyon, France
NMB	Musée d'Histoire Naturelle de Bâle, Basel, Switzerland
SWU	Insect Collection of Southwest University, Chongqing, China
SYSU	Sun Yat-sen University (ex Lingnan National History Museum or Zhongshan University), Guangzhou, China

Taxonomy

Oberea flavescens Breuning, 1947, rest. stat.

Figs 1–2

Oberea flavescens Breuning, 1947: 146. Type locality: China, Sichuan.

Oberea atropunctata v. *flavescens*: Breuning 1962: 169.

Redescription. *Body* (Fig. 1) 17.5–17.9 mm long and 3.0 mm wide. Head ochreous, apical mandible dark brown; antennae reddish brown, scape dark brown; ventral surface (except the abdominal sternite II and III black) and legs pale yellowish brown, tarsi darker. Body clothed with short golden pubescence and some erect hairs on pronotum, base of elytra and ventral surface of the basal antennal segments. *Head* slightly narrower than prothorax, vertex distinctly depressed at middle with a groove; eyes very large, inferior lobes twice as long as the gena in male and 1.5 times in female. Antennae distinctively shorter than body, reaching the apical fourth of elytra, antennomere ratio: 12.3: 2.5: 16.0: 15.8: 15.8: 15.9: 15.7: 15.4: 13.5: 12.6: 12.5 in males and 14.1: 3.0: 14.8: 14.2: 14.1: 14.9: 15.3: 15.1: 14.8: 14.4: 13.6: 13.5 in females. *Prothorax* wider than long; apical and basal margins slightly emarginated; sides rounded at middle, slightly constricted basally and apically; pronotum raised in middle, finely and densely punctured. *Scutellum* squared, slightly emarginated. *Elytra* very long, nearly 5.5 times as long a humeral width, and 4.5 times as long as head and prothorax combined,

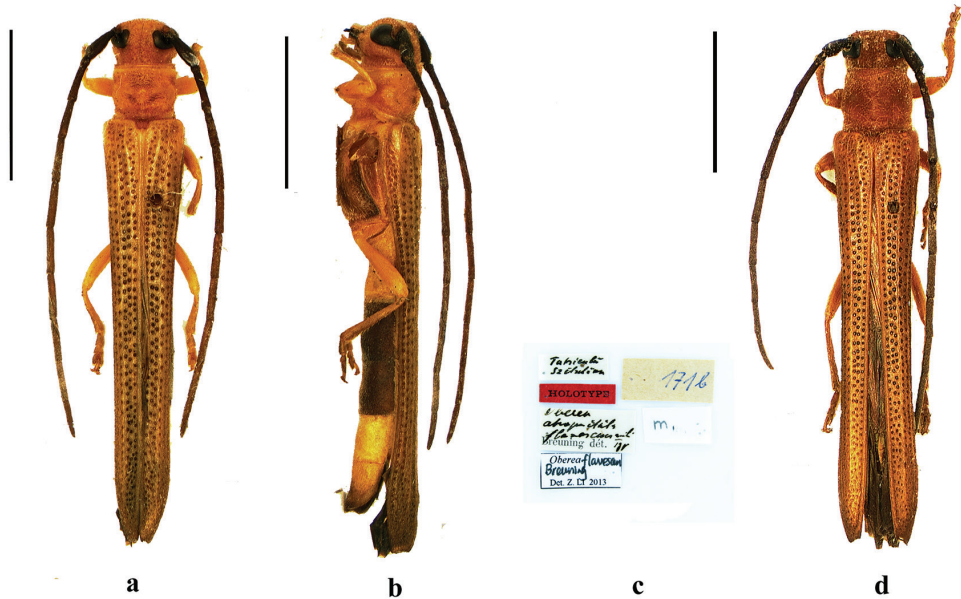


Figure 1. Habitus of *O. flavescens* Breuning, 1947, **a–c** holotype, female, from Sichuan **a** dorsal view **b** lateral view **c** label (not to scale) **d** male, from Sichuan, dorsal view. Scale bar 5.0 mm.

slightly narrowed from behind base to apical quarter, basal punctured arranged in 6 longitudinal series, and the punctures large and deep at basal area, gradually finer and irregular towards apex. *Metepisternum* and sides of abdominal segments finely punctured. Hind femora reaching posterior edge of abdominal segment I; hind tibiae almost twice as long as tarsi. Abdominal sternite V with a shallow triangular concave in males and with a median longitudinal groove in females.

Male terminalia: (Fig. 2) Tergite VIII broader than long, apex truncated and slightly emarginated, densely clothed with short setae (Fig. 2a); tegmen curved in profile, parameres elongate, mostly covered with long setae at the apical half; base of each parameres transversely and obliquely ridged on ventral side; the ridge covered with dense fine hairs (Fig. 2b–e); Median lobe 1.1 times as long as tegmen and slightly curved in profile; the median struts $3/5$ times as long as the whole median lobe in length; dorsal plate slightly longer than ventral plate; apex of ventral plate rounded; median foramen rounded (Fig. 2f); endophallus with 2 pairs of rods at apical portion; longer pair very slender baculiform, about 3.5 times as long as shorter pair (Fig. 2g).

Type material examined. *Oberea flavescens* Breuning: Holotype, ♀, Chine, Szetschuan, Tatsienlu (MNHG).

Additional material examined. China, Sichuan: 1♂, Chine, Szetschuan, Tatsienlu (MNHG) [a mislabeled paratype]

Distribution. China (Sichuan).

Remarks. This species was first described by Breuning in 1947 based on a specimen from Sichuan Province, China but it was downgraded to a variety of *O. atro-*

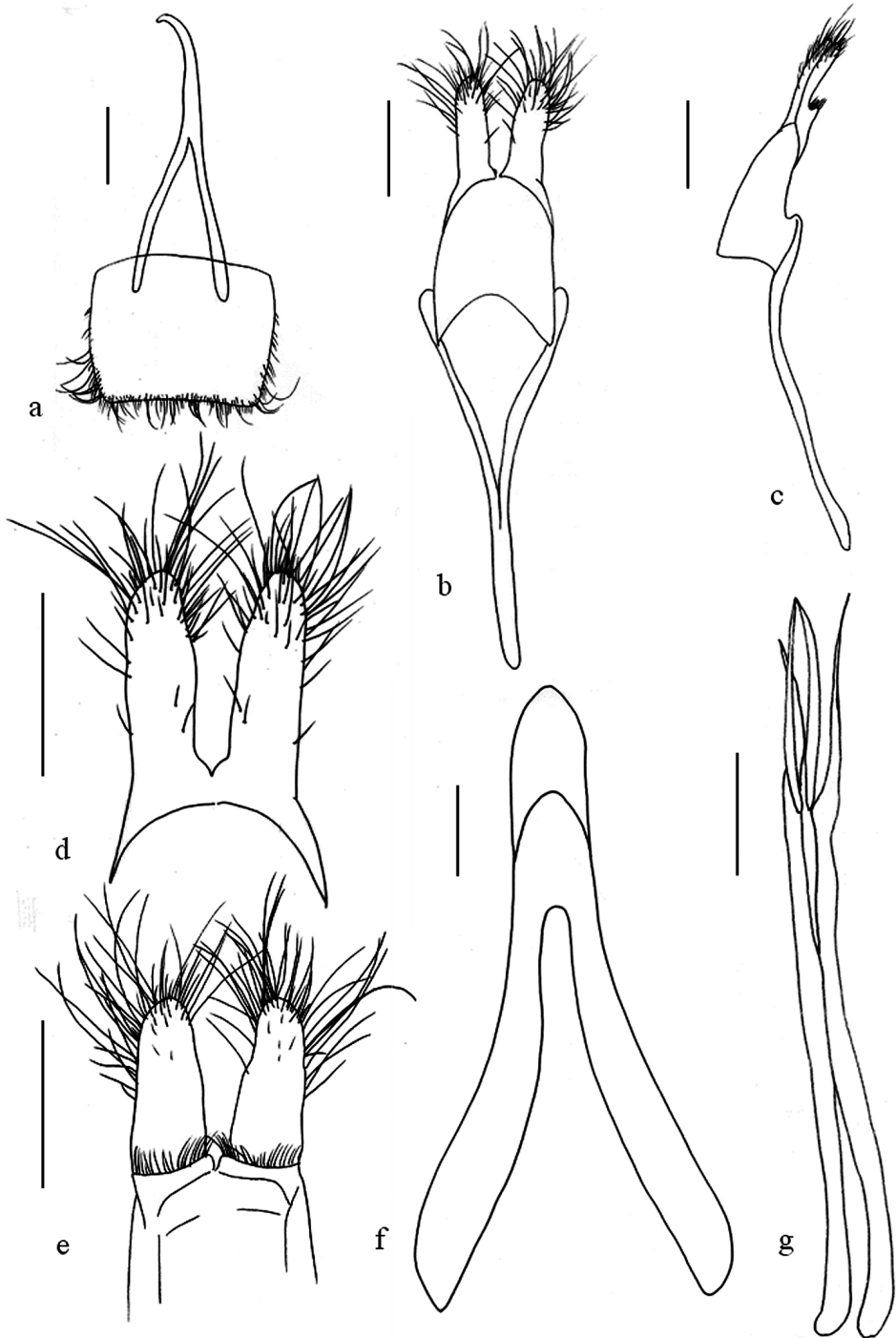


Figure 2. *Oberea flavescens*, male genitalia, **a** tergite viii **b** tegmen, dorsal view **c** tegmen, lateral view **d** parameres, dorsal view **e** parameres, ventral view **f** median lobe, ventral view **g** sclerites in endophallus. Scale bar 0.5 mm.

punctata Pic, 1916 in his revisionary work (1960–1962). A careful examination and comparison of the types of *O. flavescens* and *O. atropunctata* (Figs 4–5) show that they are different species. *Oberea flavescens* differs from *O. atropunctata* in having longer elytra and shorter antennae. They can be distinguished by having differently shaped male genitalia, the long pair of rods being 3.5 times as long as the short pair (1.5 times as long as in *O. atropunctata*) and the short pair consisting of two simple short rods.

***Oberea toi* Gressitt, 1939, rest. stat.**

Fig. 3

Oberea toi Gressitt, 1939a: 106. Type locality: China, Guangdong.

Oberea atropunctata v. *toi*: Breuning 1962: 170.

Type material examined. *Oberea toi* Gressitt: Holotype, ♀, Lung-ping-hui, Lien District, N. Kwangtung Prov., 16. V. 1934, F. K. To Coll. (SYSU).

Additional material examined. China, Jiangxi: 1 ♀, Kiukiang (MNHG).

Distribution. China (Guangdong, Jiangxi).

Remarks. *Oberea toi* Gressitt, 1939 was originally described by Gressitt from Guangdong, China, and then was downgraded to a variety of *O. atropunctata* by Breuning (1960–1962). It was regarded as the synonym of *O. atropunctata* (Löbl & Smetana, 2010);



Figure 3. Habitus of *O. toi* Gressitt, 1939, holotype, female, from Guangdong, **a** dorsal view **b** lateral view. (not to scale).

however, the examination of the types shows that they are different species. Despite the similar color pattern of their bodies, *O. toi* differs from *O. atropunctata* in the following characters: antennae as long as the body in female, and hind femora exceeding the posterior edge of abdominal segment I. Therefore, we suggest restoring *O. toi* Gressitt, 1939 from synonymy of *O. atropunctata* Pic, 1916.

***Oberea atropunctata* Pic, 1916**

Figs 4–5

Oberea atropunctata Pic, 1916: 17. Type locality: China, Yunnan.

Description. *Male terminalia:* (Fig. 5) Tergite VIII broader than long, apex truncated and slightly emarginated, rounded at side, densely clothed with short setae (Fig. 5a); tegmen curved in profile, parameres stouter, mostly covered with long hairs; transverse and oblique ridge at basal lobe on ventral side with dense fine hairs (Fig. 5b–e); penis 1.25 times as long as tegmen and curved in profile; the median struts $4/5$ times as long as the whole median lobe in length; dorsal plate slightly longer than ventral plate; apex of ventral plate rounded; median foramen rounded (Fig. 5f); endophallus with two pairs of sclerites apically, the long pair very slender baculiform, the short pair fused at base forming a “Y” (Fig. 5g).

Diagnosis. Body 17.9 mm long and 3.0 mm wide. The species is very similar to *O. flavescens* Breuning and *O. toi* Gressitt, especially in color patterns. The following combination of characters separates it from *O. flavescens*: shape of rods in the endophallus; elytra nearly 4.2 times as long as humeral width, and 3.7 times as long as head and prothorax combined.

Type material examined. *Oberea atropunctata* Pic: Holotype, ♀, Yunnan (MNHN).

Additional material examined. **China**, Sichuan: 1♂, Sichuan Province, 8.V.1985 (SWU); Yunnan: 1♂, China, Yun-nan-sen (MNHG).

Distribution. China (Sichuan, Yunnan).

***Oberea taiwana* Matsushita, 1933**

Fig. 6

Oberea taiwana Matsushita, 1933: 423. Type locality: China, Taiwan.

Oberea taihokuensis Breuning, 1962: 168. Type locality: China, Taiwan. **syn. n.**

Oberea taihokuensis v. *flavosternalis* Breuning, 1962: 169. [Unavailable name according to ICZN, art. 10.2.]

Type material examined. *O. taihokuensis* Breuning: Holotype, ♀, Formosa, Taihoku, 20.IV.1932, coll. M. Chujo (MHNG).

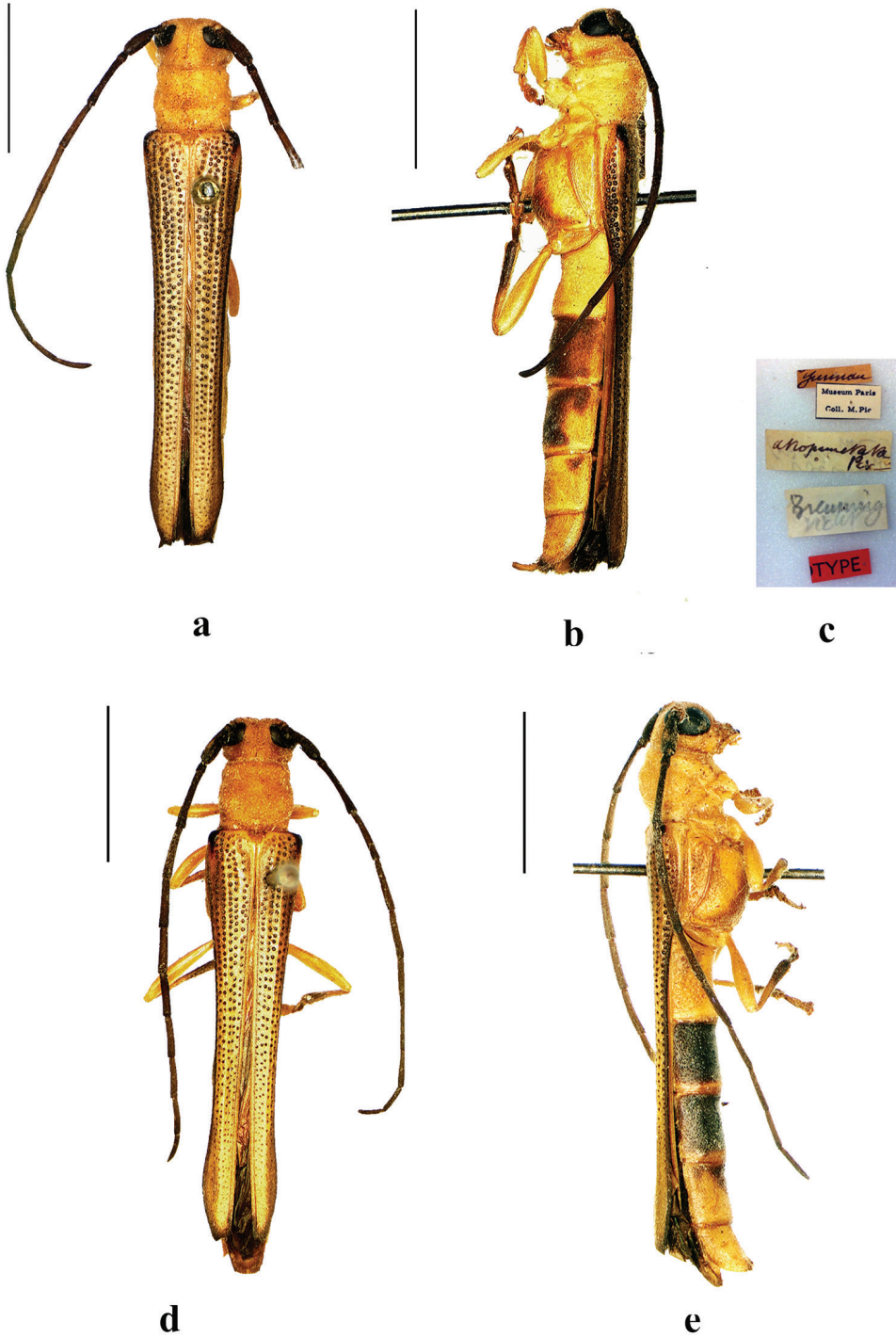


Figure 4. Habitus of *O. atropunctata* Pic, 1916, **a–c** holotype, female, from Yunnan **a** dorsal view **b** lateral view **c** label (not to scale) **d–e** male, from Yunnan **d** dorsal view, **e** lateral view. Scale bar 5.0 mm.

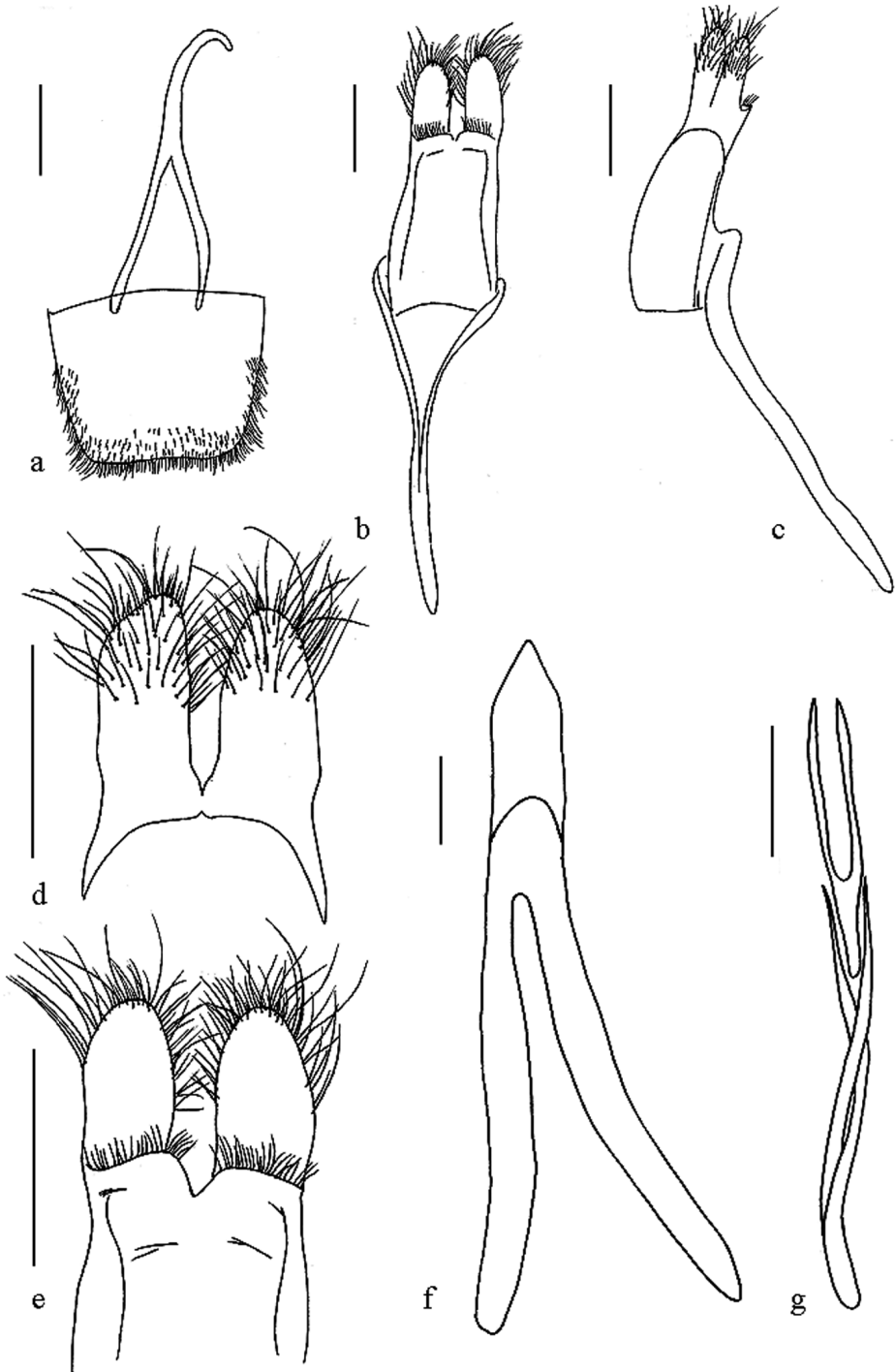


Figure 5. *Oberea atropunctata*, male genitalia, **a** tergite viii **b** tegmen, dorsal view **c** tegmen, lateral view **d** parameres, dorsal view, **e** parameres, ventral view **f** median lobe, ventral view **g** sclerites in endophallus. Scale bar 0.5 mm.

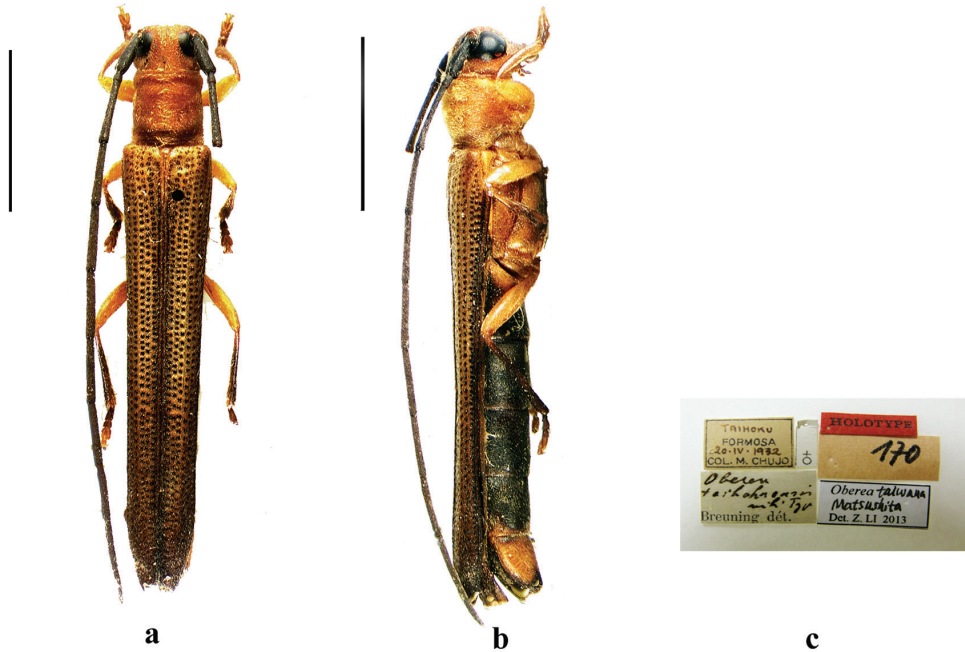


Figure 6. Habitus of *O. taihokuensis* Breuning, 1962, holotype, female, from Taiwan, **a** dorsal view **b** lateral view, **c** label (not to scale). Scale bar 5.0 mm.

Additional material examined. **China,** Taiwan: 1♂, Formosa, Kosempo (MHNG) [holotype of *Oberea taihokuensis* v. *flavosternalis*]; 1♀, Formosa, Kurau [a mislabeled Paratype].

Distribution. China (Taiwan).

Remarks. Matsushita described *O. taiwana* from Taiwan, China in 1933. In Breuning's revision (1960–1962) on worldwide *Oberea*, *O. taiwana* Matsushita was recorded without examining types and *O. taihokuensis* was described as a new species in 1962. Kurihara and Ohbayashi (2007) revised the *Oberea* species from Taiwan and re-described *O. taihokuensis* based on the original description. According to the original description of *O. taiwana*, the type was deposited in Hokkaido University, but Dr. Kurihara could not find any type there (Kurihara *in litt.*). After having compared photo and description of *O. taiwana* in Kurihara and Ohbayashi's publication (2007) and the holotype of *O. taihokuensis*, it is suggested that *O. taihokuensis* Breuning, 1962 is junior synonym of *O. taiwana* Matsushita, 1933.

***Oberea sylvia* Pascoe, 1858, rest. stat.**

Figs 7–8

Oberea sylvia Pascoe, 1858: 261. Type locality: "China, Borealis".

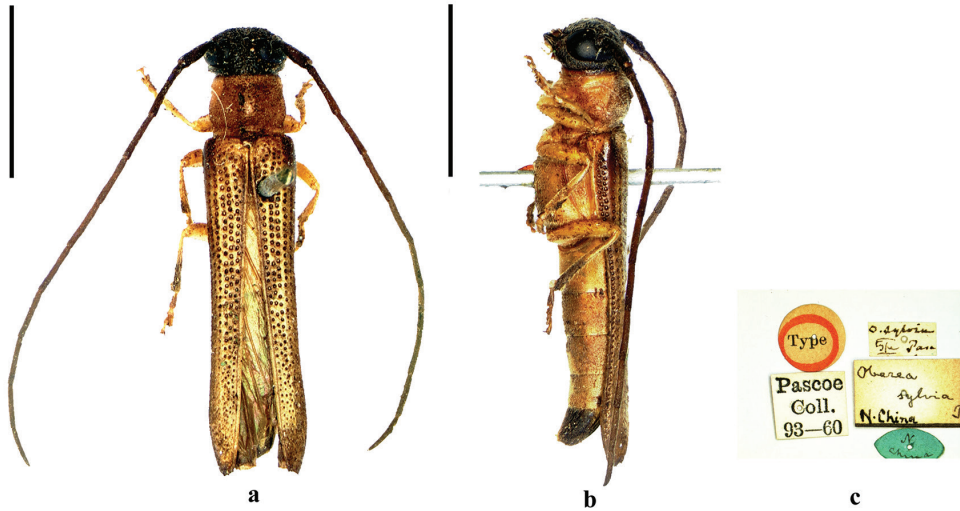


Figure 7. Habitus of *O. sylvia* Pascoe, 1958, holotype, male, from North China, **a** dorsal view **b** lateral view **c** label (not to scale). Scale bar 5.0 mm.

Redescription (Fig. 7). *Body* 12.5–13.5 mm long and 2.3mm wide. *Head* black except for labrum yellowish brown to reddish brown, maxillary palpus and labial palpus pale yellowish brown; antennae reddish brown, scape dark brown. *Prothorax*, elytra and ventral surface (except for the abdominal segment V black) ochraceous; legs yellowish brown, apical half of hind tibia and tarsi darker brown. Body clothed with short golden pubescence and some erect hairs on pronotum, base of elytra and ventral surface of the basal antennal segments. *Head* short, with distinctly depressed vertex; eyes very large, inferior lobes 2 times as long as the gena in male. Antennae of males longer than body, antennomere III longer than pedicel and antennomere IV. *Prothorax* 1.2 times wider than long, slightly constricted basally and apically; pronotum with a tubercle in middle, finely and densely punctured. Scutellum squared, slightly emarginated. Elytra nearly three times as long as humeral width, and 3.6 times as long as head and prothorax combined, slightly narrowed from behind base to apical quarter, apex truncate; basal disc with large and deep punctures arranged in line, punctures becoming gradually finer and irregular towards apical quarter. *Metepisternum* and sides of abdominal surface finely punctate. Metafemora reaching posterior edge of abdominal segment I; metatibiae almost twice as long as tarsi. Abdominal sternite V with a shallow triangular concave in males.

Male terminalia. (Fig. 8) Tergite VIII broader than long, apex truncated and slightly emarginated, rounded at sides, densely clothed with long hairs and short setae (Fig. 8a); Tegmen curved and penis curved in profile, parameres mostly covered with long setae on the apical half; base of each lobe in ventral side transversely and obliquely ridged; the ridge with dense fine hairs (Fig. 8b–e); penis 1.2 times as long as tegmen, dorsal plate slightly longer than ventral plate; the median struts 3/5 times as long as the whole median lobe in length; apex of the ventral plate rounded; median foramen rounded (Fig. 8f); apical endophallus with 2 pairs of baculiform rods, the long pair 2.8 times as long as short pair (Fig. 8g).

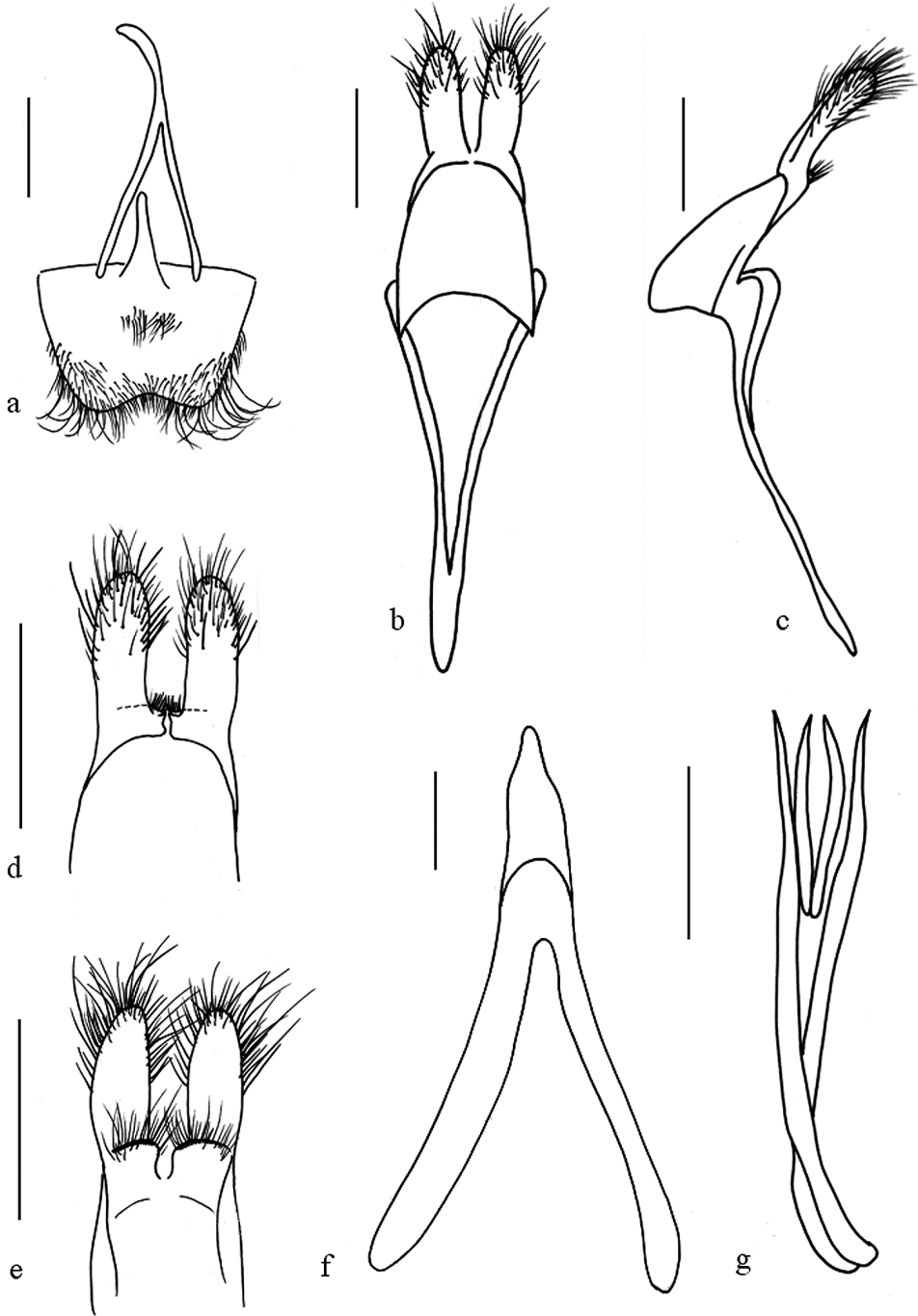


Figure 8. *Oberea sylvia*, male genitalia, **a** tergite viii **b** tegmen, dorsal view **c** tegmen, lateral view **d** parameres, dorsal view **e** parameres, ventral view **f** median lobe, ventral view, **g** sclerites in endophallus. Scale bar 0.5 mm.

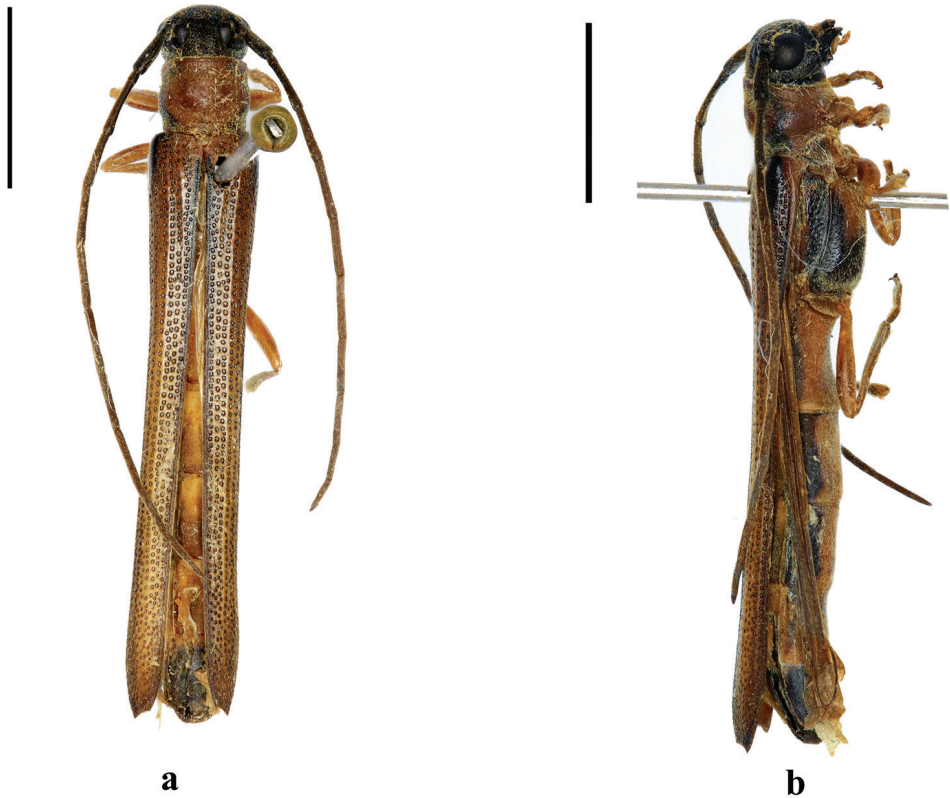


Figure 9. Habitus of *O. brevithorax* Gressitt, 1936, male, from Tonkin, **a** dorsal view **b** lateral view. Scale bar 5.0 mm.

Type material examined. *Oberea sylvia* Pascoe: Holotype, ♂, N. China (BMNH).

Additional material examined. China: 1♂, Chine (MHNL); 4♂♂, Chine (BMNH).

Distribution. East China.

Remarks. *Oberea sylvia* was originally described by Pascoe 1858 and regarded as synonym of *O. nigriceps* (White, 1844) (Breuning, 1962). After comparing the types, *O. sylvia*, which distinctly differs from *O. nigriceps* in male genitalia (Fig. 8), is restored to specific rank.

The holotype probably was collected by Robert Fortune. According to his book “Three years wandering in the north provinces of China”, the northern province of China included Shanghai, Zhejiang Province and Jiangsu Province; therefore “N. China” or “China borealis” might mean east China. Unfortunately, there is no detailed information about the location of the specimen that the first author examined.

Oberea brevithorax Gressitt, 1936

Fig. 9

Oberea brevithorax Gressitt, 1936: 108. Type locality: China, Taiwan.

Oberea brevithorax inepta Gressitt, 1939b: 122. Type locality: China, Fujian.

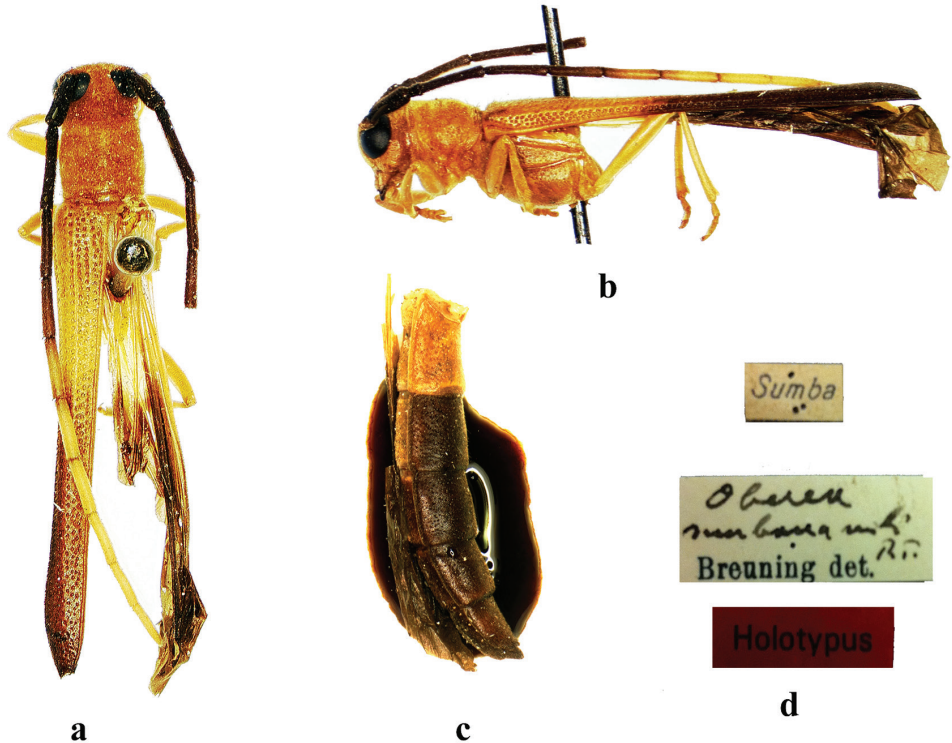


Figure 10. Habitus of *O. sumbana* Breuning, 1961, holotype, male, from Sumba, **a** dorsal view **b** lateral view (without abdomen) **c** abdomen, lateral view **d** label. (not to scale).

Oberea binotaticollis v. *brevithorax*: Breuning 1962: 193.

Oberea binotaticollis v. *inepta*: Breuning 1962: 193.

Oberea brevithorax: Kurihara and Ohbayashi 2007: 211.

Type material examined. *Oberea brevithorax inepta* Gressitt: Holotype, ♂, Cha Shan, Kien-ning District, Fukien Province, SE. China, VI. 22-28. 1933. D. C. Ngu coll. (SYSU).

Additional material examined. **China**, Zhejiang: 1♂, Zhejiang province, Lin'an city, West Tianmushan, Dajingwu, 30°22'18.86"N, 119°26'03.81"E, 828m, 9–11. VII.2012, leg. Jianyue Qiu and Hao Xu (SWU); **Vietnam**, 1♂, Chapa, Tonkin, J. Clemont coll. (MHNG); 1♂, Chapa, Tonkin (MHNG).

Distribution. China (Fujian, Hainan, Zhejiang, Taiwan) ; Vietnam (new record).

Remarks. *Oberea brevithorax* was first described as a valid species by Gressitt in 1936 but was downgraded as a variety of *Oberea binotaticollis* Pic, 1915 by Breuning in his revision. Kurihara and Ohbayashi (2007) compared them and confirmed that they were two different species, easily distinguished from each other by different body proportions, antennal lengths, and male genitalia. The species was only recorded in China but recently, some specimens collected in Tonkin, Vietnam, were found in MHNG, and they are a new record to Vietnam.

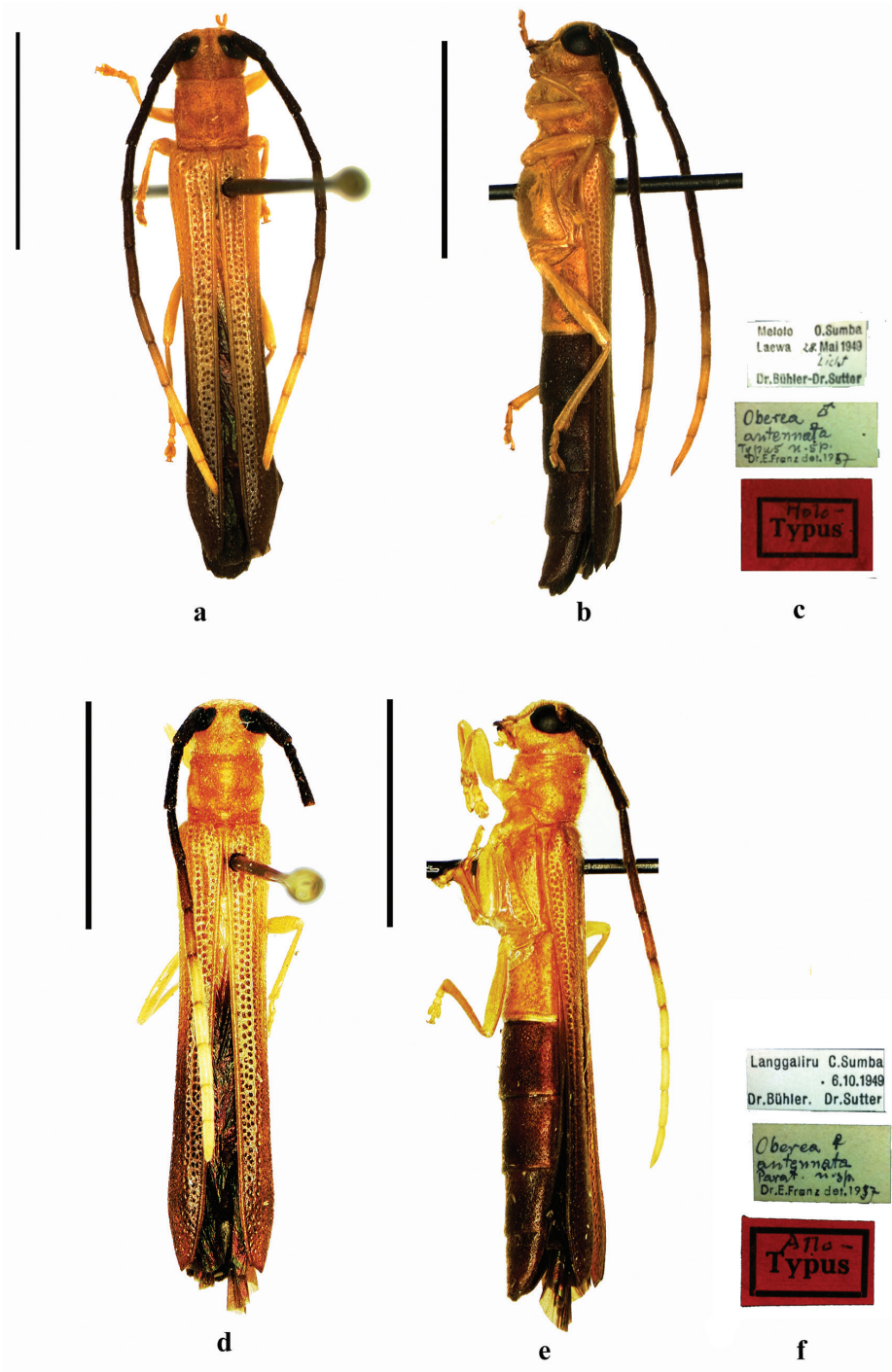


Figure 11. Habitus of *O. antennata* Franz, 1972, **a–c** holotype, male, from Sumba **a** dorsal view **b** lateral view, **c** label (not to scale) **d–f** allotype, female, from Sumba **d** dorsal view **e** lateral view **f** label (not to scale). Scale bar 5.0 mm.

***Oberea sumbana* Breuning, 1961**

Figs 10–11

Oberea sumbana Breuning, 1961: 131. Type locality: Indonesia, Sumba.*Oberea antennata* Franz, 1972: 143. Type locality: Indonesia, Sumba. **syn. n.**

Type material examined. *Oberea sumbana* Breuning: Holotype, ♂, Sumba (MHNG); Allotype: ♀, Waingapoe, 96, [P.] Everett [printed label faded] (MHNG). *Oberea antennata* Franz: Holotype, ♂, O. Sumba: Melolo Iaewa, 28.V.1949, Dr. Bühler & Dr. Sutter leg. (NMB); Allotype: ♀, C. Sumba: Langgaliru, 6.10.1949. Dr. Bühler & Dr. Sutter leg. (NMB).

Distribution. Indonesia.

Remarks. After examining the holotypes of *O. sumbana* and *O. antennata*, it is concluded that *O. antennata* Franz, 1972 is junior synonym of *O. sumbana* Breuning, 1961.

Acknowledgments

We are grateful to the following colleagues for the loan or gift of specimens upon which the present work is based: Mr. Gérard L. Tavakilian (MHNH), Ms. Azadeh Taghavian (MHNH), Mr. Maxwell V. L. Barclay (BMNH), Mr. Harold Labrique (MHNL), Prof. Hong Pang (SYSU), Mr. Hao Xu (Hunan Agricultural University, Hunan, China) and Ms. Jianyue Qiu (SWU). We want to express our special thanks to Dr. Takashi Kurihara (Ehime University, Japan) for providing his publications and other important information. We thank Dr. Francesco Vitali (Musée national d'Histoire naturelle de Luxembourg) and to both anonymous referees for improving the manuscript. The research is supported by the National Natural Science Foundation of China (No.31501882), the Fundamental Research Funds for the Central Universities (XDJK2015C056) and the China Scholarship Council (CSC).

References

- Breuning S (1947) Nouveaux Cérambycidés paléarctiques (4e note). *Miscellanea Entomologica* 43(11): 141–149.
- Breuning S (1960) Révision systématique des espèces du genre *Oberea* Mulsant de globe (Coleoptera Cerambycidae) (1^{re} Partie). *Frustula Entomologica* 3(4): 1–59.
- Breuning S (1961) Révision systématique des espèces du genre *Oberea* Mulsant de globe (Coleoptera Cerambycidae) (2^{me} Partie). *Frustula Entomologica* 4(3): 61–140.
- Breuning S (1962) Révision systématique des espèces du genre *Oberea* Mulsant de globe (Coleoptera Cerambycidae) (3^{me} Partie). *Frustula Entomologica* 5(4): 141–232.
- Franz E (1972) Neue indoaustralische Cerambyciden (Ins. Col.) aus dem Naturhistorischen Museum zu Basel. *Verhandlungen der Naturforschenden Gesellschaft im Basel* 82(1): 136–144.

- Fortune R (1847) Three Years' Wanderings in the Northern Provinces of China. John Murray, London, 448 pp.
- Gressitt JL (1936) New Longicorn Beetles from Formosa, III (Coleoptera: Cerambycidae). The Philippine Journal of Science 61(1): 89–111.
- Gressitt JL (1939a) A study of the Longicorn Beetles of Kwangtung Province, S. China (Coleoptera: Cerambycidae). Lingnan Science Journal 18(1): 1–122.
- Gressitt JL (1939b) A Collection of Longicorn Beetles from T'ien-mu Shan, East China (Coleoptera: Cerambycidae). Notes d'Entomologie Chinoise 6(4): 81–133.
- Gressitt JL (1951) Longicorn Beetles of China – *Longicornia* (Vol. 2). Paul Lechevalier, Paris, 667 pp.
- Li Z, Cuccodoro G, Chen L (2014) On the identity of *Oberea formosana* Pic, 1911, with description of *Oberea pseudoformosana* sp. n. from China (Coleoptera: Cerambycidae). Revue Suisse de Zoologie 121(1): 51–62.
- Li Z, Tian L, Cuccodoro G, Chen L, Cheng L (2016) Taxonomic note of *Oberea fuscipennis* (Chevrolat, 1852) based on morphological and DNA barcode data (Coleoptera, Cerambycidae, Lamiinae). Zootaxa 4136(2): 360–372. <https://doi.org/10.11646/zootaxa.4136.2.6>
- Löbl I, Smetana A (2010) Catalogue of Palaearctic Coleoptera. Volume 6 Chrysomeloidea. Apollo books, Stenstrup, 924 pp.
- Kurihara T (2009) Review of the Genus *Oberea* from Continental Asia (Coleoptera, Cerambycidae) Part I: *Nigriceps* Species-group. Special Bulletin of the Japanese Society of Coleopterology 7: 391–420.
- Kurihara T, Ohbayashi N (2007) Revisional Study on the Genus *Oberea* Dejean of Taiwan, with Description of Three New Species (Coleoptera, Cerambycidae). The Japanese Journal of Systematic Entomology 13(2): 193–219.
- Matsushita M (1933) Beitrag zur Kenntnis der Cerambyciden des japanischen Reichs. Journal of the Faculty of Agronomy of Hokkaido Imperial University 34(2): 157–445.
- Pascoe FP (1858) XVII. On New Genera and Species of Longicorn Coleoptera. Part III. The Transactions of the Entomological Society of London (2) 4(6): 236–266.
- Pic M (1916) Longicornes asiatiques. Matériaux pour servir à l'étude des Longicornes 10(1): 12–19.
- Rondon JA, Breuning S (1970) Lamiines du Laos. In: Gressitt JL, Rondon JA, Breuning S (Eds) Cerambycid beetles of Laos (Longicornes du Laos). Pacific Insects Monograph 24: 315–571.