

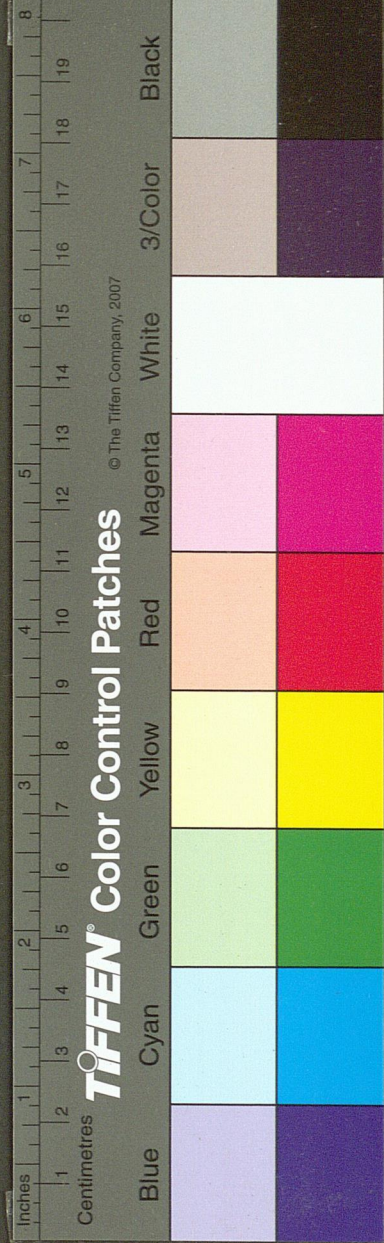
鳥類

鳳



鸞	鶻	鶻	鶻	雀
	桑扈	雉	鴿	啄木鳥
			鶻	鷓鴣
	鷓鴣	鷓鴣	鷓鴣	鷓鴣
			鷓鴣	鷓鴣
	鷓鴣	鷓鴣	鷓鴣	鷓鴣
			鷓鴣	鷓鴣
	鷓鴣	鷓鴣	鷓鴣	鷓鴣

國家圖書館, NATIONAL CENTRAL LIBRARY, TAIWAN, R.O.C.



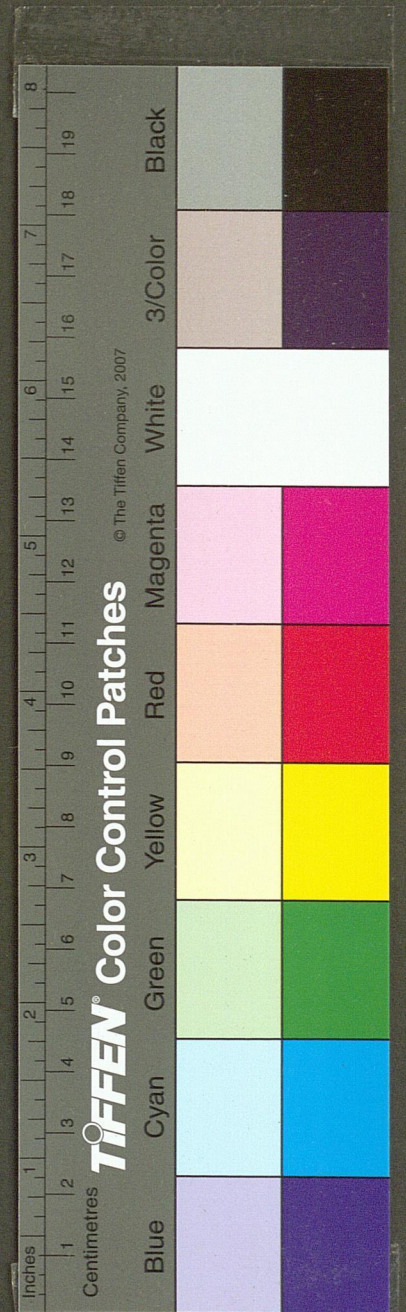
鳳

鳳神鳥也俗呼鳥王羽蟲三百六十而鳳為之長鴻前麇
 後昨頸魚尾鶴頰鴛思龍文龜背燕領雞喙五色備舉出
 於東方君子之國見即天下大寧首文曰德翼文曰禮背
 文曰義膺文曰仁腹文曰信其聲若簫不啄生蟲不折生
 草不群居不旅行不懼羅網非梧桐不棲非竹實不食非
 醴泉不飲

鸞



國家圖書館, NATIONAL CENTRAL LIBRARY, TAIWAN, R.O.C.



鸞

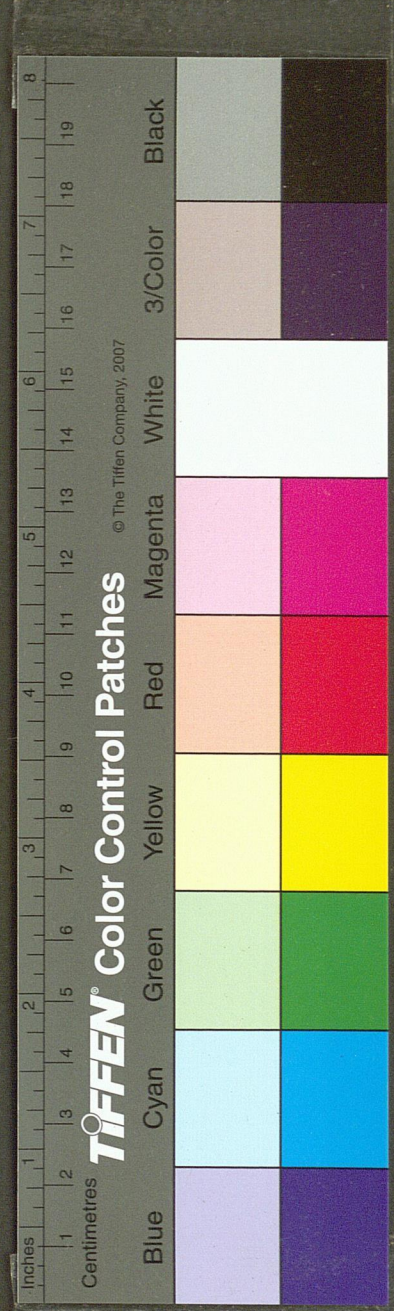
說文云鸞神靈之精也赤色五采雞形鳴中五音頌聲作
 則至一曰青鳳為鸞鸞雌曰和雄曰鸞舊云鸞血作膠可
 續弓弩琴瑟之弦或曰鸞鳳之亞也始生類鳳久則五采
 變易當上古時鸞與順動此鳥輒集車上雄鳴於前雌應
 於後後世不能致作和鸞以象之因謂之鸞伏

孔

雀



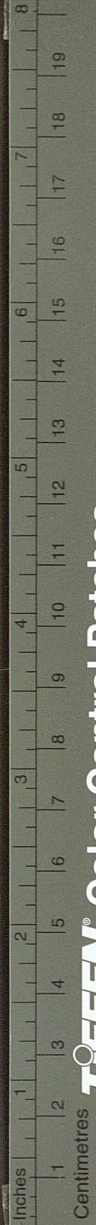
國家圖書館 NATIONAL CENTRAL LIBRARY TAIWAN, R.O.C.



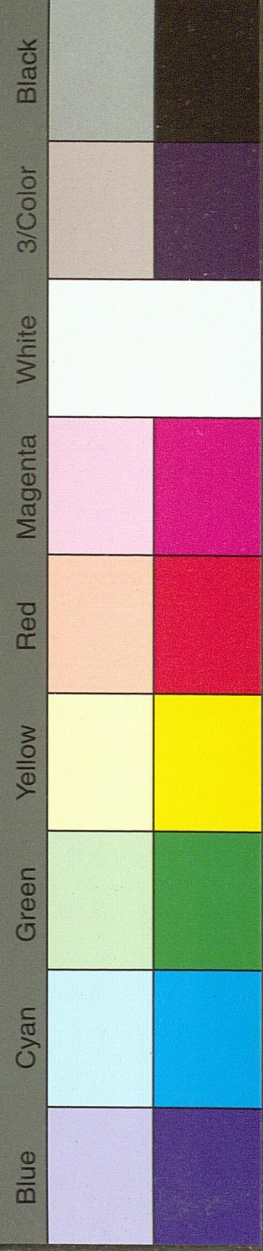
孔雀

博物志云孔雀尾多變色或紅或黃其色無定人拍其尾則舞尾有金翠五年而後成初春乃生三四月後復凋雌者不冠尾短無金翠性頗妬忌自矜其尾雖馴養已久遇婦女童子服錦綵者必逐而啄之每欲山棲先擇置尾之地故欲生捕者候雨甚徃擒之以愛其尾不復騫揚也南越志曰孔雀不必匹合正以音影相接便孕亦與蛇偶禽經曰鵠見蛇則噪而賁孔見蛇則宛而躍

比 翼 鳥



TIFFEN Color Control Patches



比翼鳥

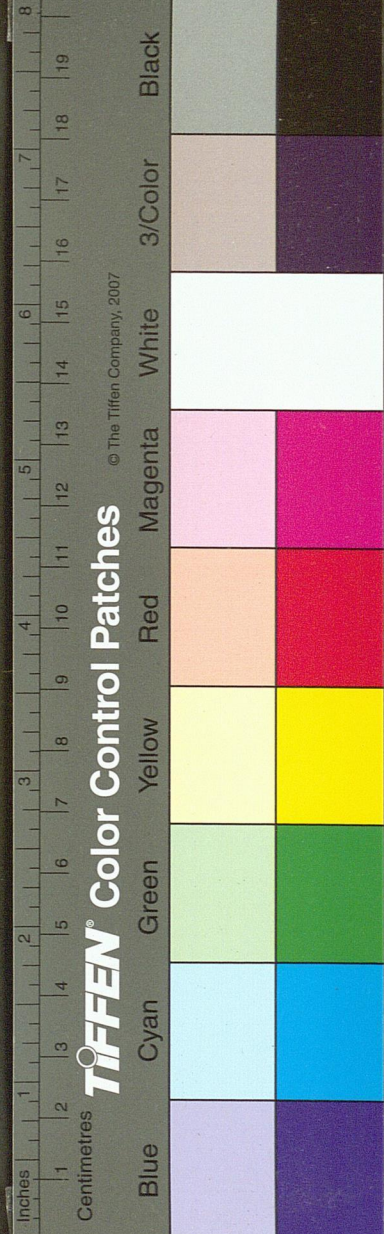
結魯國有比翼鳥爾雅云南方有比翼鳥不比不飛謂之
鷦鷯注云似鳧青赤色一目一翼相得乃飛王者有孝德
于幽遠則至

精

衛



國家圖書館, NATIONAL CENTRAL LIBRARY, TAIWAN, R.O.C.

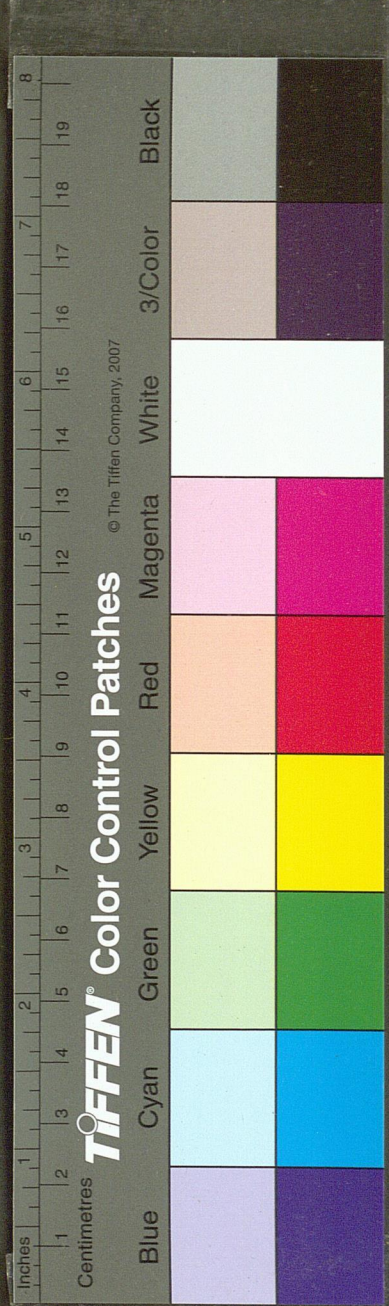


玄鶴



發鳩山有鳥狀如鳥白首赤喙名曰精衛其鳴自呼是神
農之少女名女娃昔遊東海溺而不返化為精衛常收西
山之木石以填東海

精衛



國家圖書館 NATIONAL CENTRAL LIBRARY, TAIWAN, R.O.C.

世樂鳥

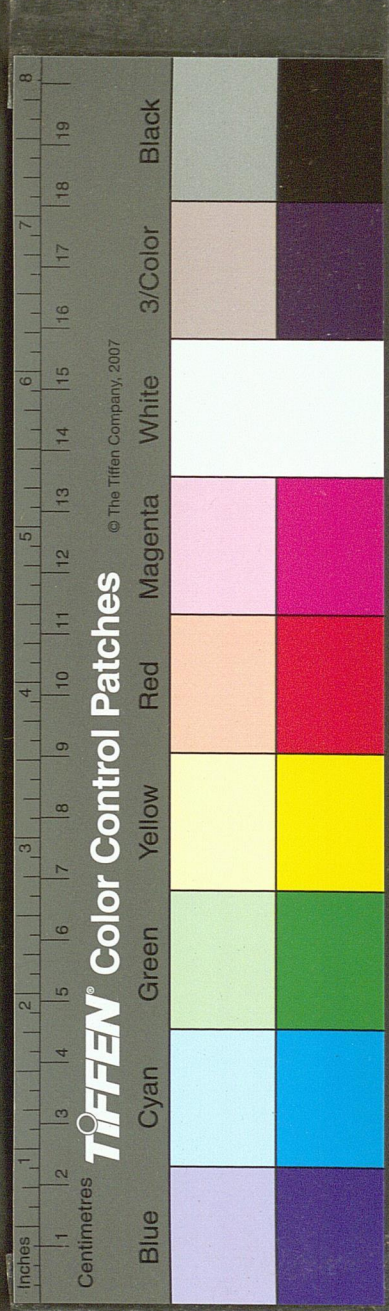


翔

雷山有玄鶴者粹黑如漆其壽滿三百六十歲則色純黑
王者有音樂之節則至昔黃帝習樂於崑崙山有玄鶴飛

玄鶴

國家圖書館, NATIONAL CENTRAL LIBRARY, TAIWAN, R.O.C.

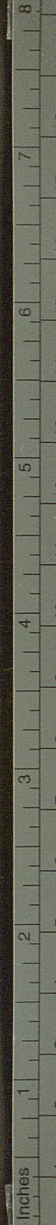


世樂鳥

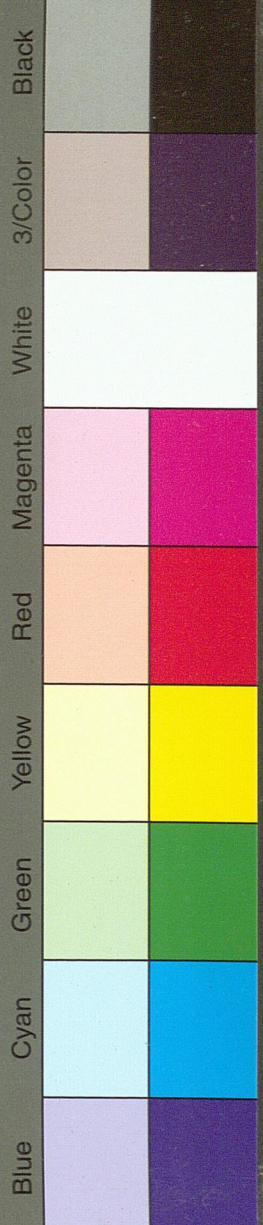
按南方異物志有時樂鳥即世樂也此鳥本南海貢來與鸚鵡狀同而毛尾全異其心聰性辯護主報主尤非凡禽

臨海山有世樂鳥其狀五色丹喙赤首有冠王者有明德天下太平則見

鶴



TIFFEN® Color Control Patches



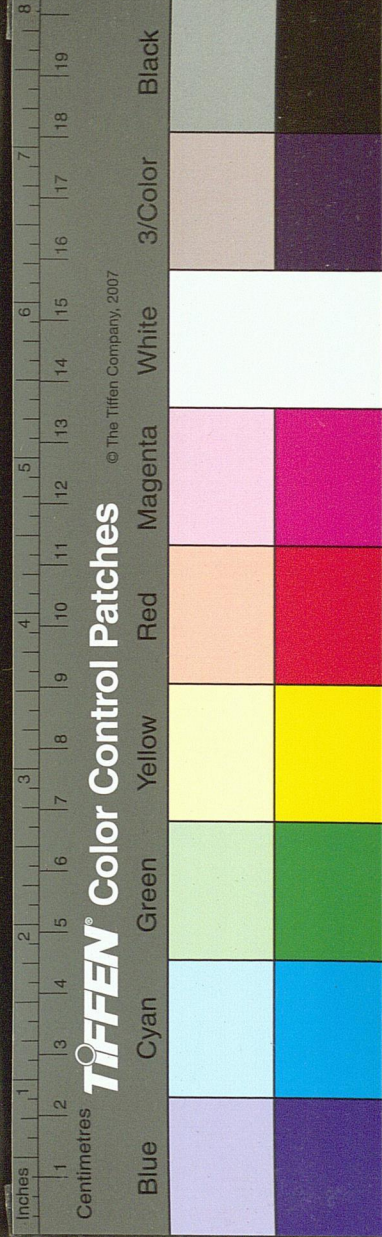
© The Tiffen Company, 2007

NATIONAL CENTRAL LIBRARY, TAIWAN, R.O.C.

鶴

鶴青脚素翼常夜半鳴其鳴高亮聞八九里性警至八月
 白露降因即高鳴相警移徙所宿處慮有害也始生二
 年落子毛三年產伏七年飛薄雲漢後七年學舞後七年
 應節後七年晝夜十二鳴中律後六十年不食生物大毛
 落茸毛生色雪白泥水不能汗一百六十年雌雄相視月
 睛不轉而孕六百年飲而不食

鷄

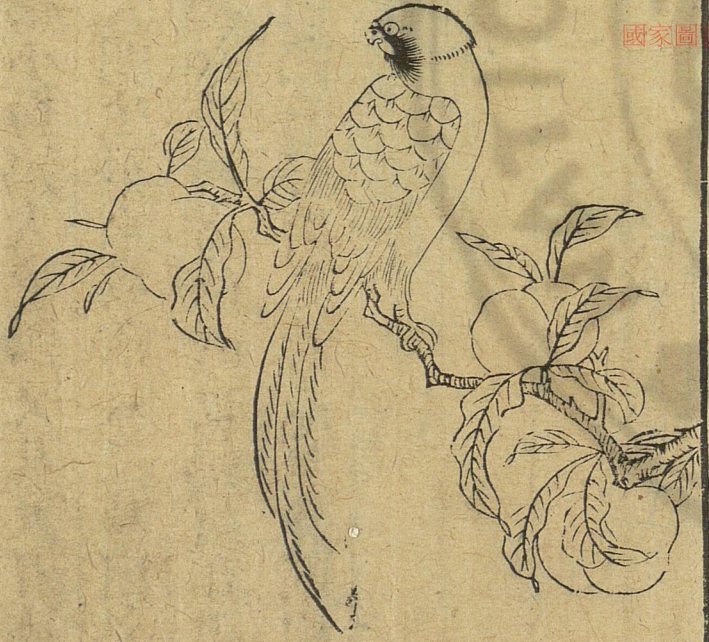


鷄

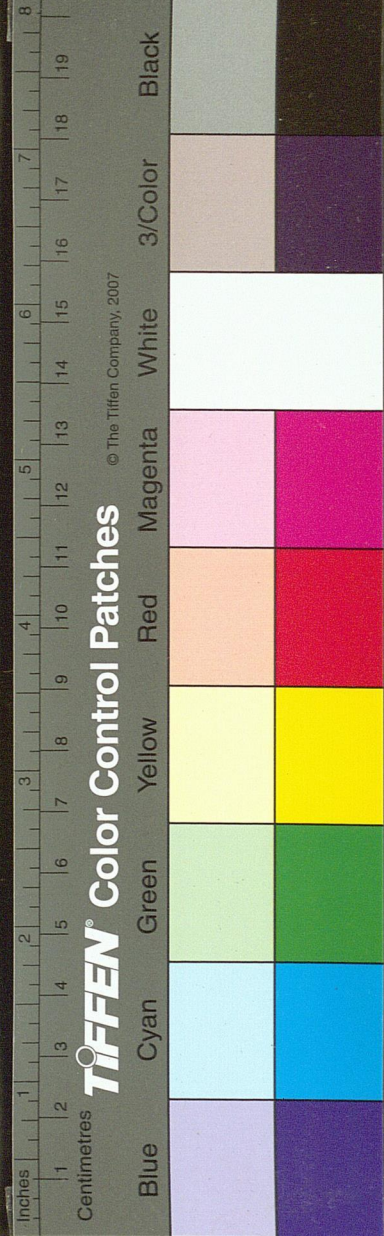
鷄有蜀魯荆越諸種越鷄小蜀鷄大魯鷄又其大者舊說
 日中有鷄鷄西方之物大明生於東故鷄入之易曰巽為
 鷄兌見而巽伏故為鷄鷄知時而善伏故也鷄好邪視故
 王褒云魚瞰鷄睨吳均曰鷄有吁群之德故見食則相告

鸚

鵒



國家圖書館 NATIONAL CENTRAL LIBRARY, TAIWAN



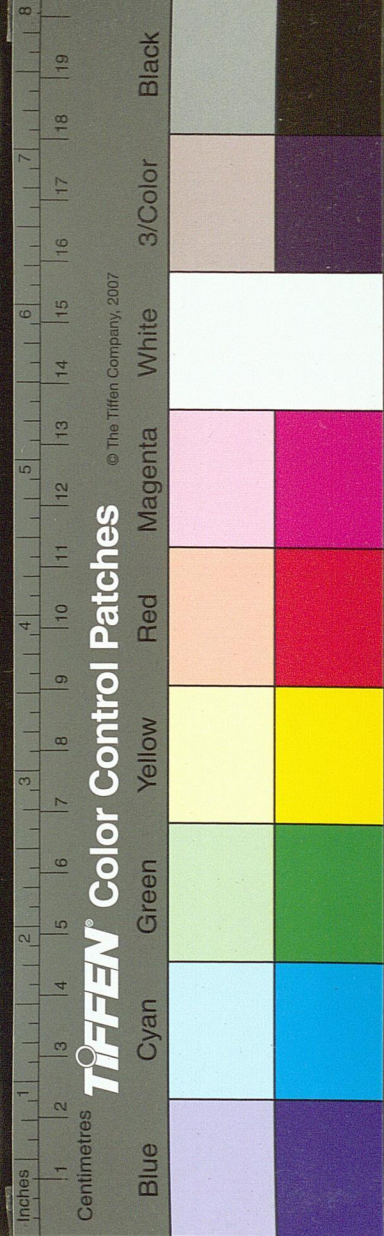
鸚鵡

鸚鵡人舌能言青羽赤喙其狀如鴉舊說衆鳥足趾前三
 後一其目下瞼眨上唯鸚鵡四趾齊分兩瞼俱動如人目
 交州巴南盡有之又一種名秦吉了形似鸚鵡而色白頂
 微黃頂毛有縫如人分髮耳聰心慧舌巧人言無不通又
 謂之了鸚出杜蒔州唐白居易有秦吉了詞

黃鳥



國家圖書館 NATIONAL CENTRAL LIBRARY, TAIPEAN, TAIWAN



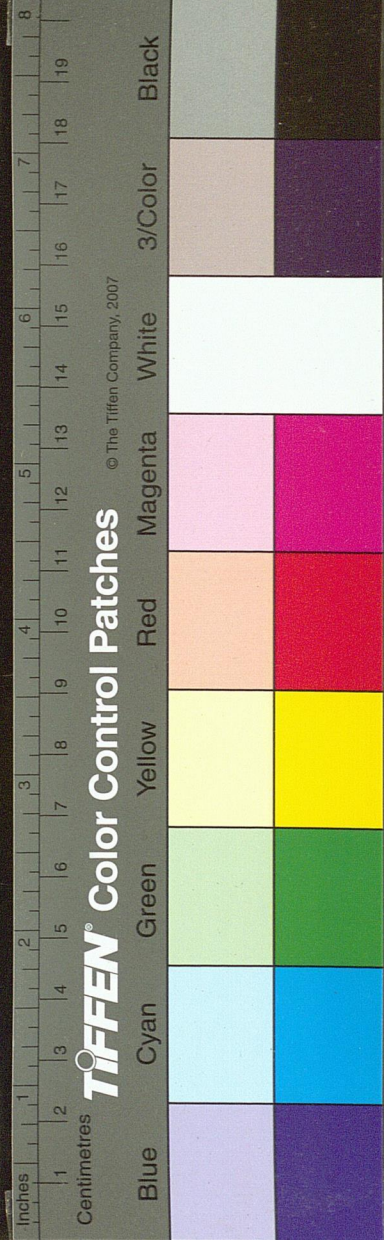
黃鳥

黃栗留也一名倉庚齊人謂之搏黍秦人謂之黃流離幽
 冀謂之黃鳥一名黃鸝留或謂之黃栗留一名黃鷺而爾
 雅有皇黃鳥倉庚商庚鷺黃楚雀之名二月而鳴性好凌
 飛荆州每至冬月於田畝中得土堅圓如卵者輒取以賣
 破之則鷺在其中無毛羽候春始生羽破土而出

鷺



國家圖書館 NATIONAL CENTRAL LIBRARY, TAIWAN, P. R. C.



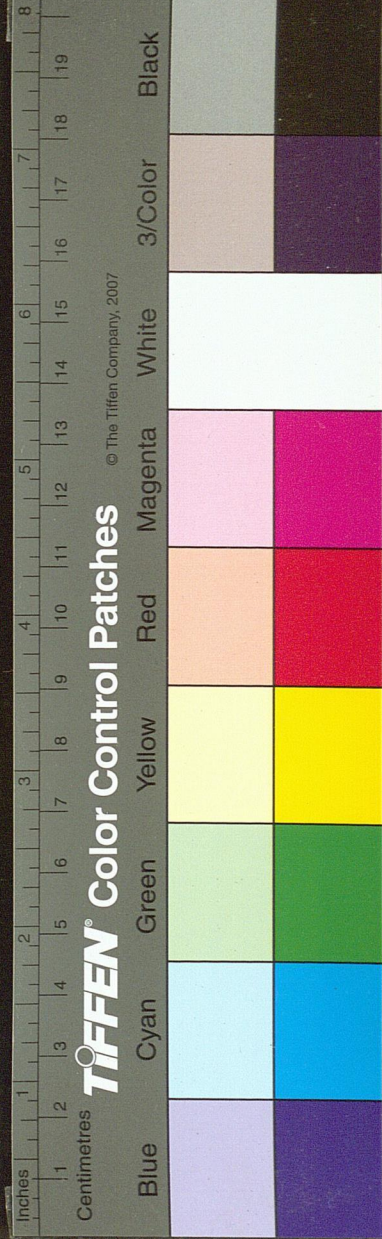
鷹



鷺

鷺一名春鋤步於淺水好自低昂故曰春鋤色雪白頂上
 有絲絨毳然長尺餘欲取魚則弭之青脚喜翹高尺七八
 寸善蹙捕魚其翔集必舞而後下性惡露雄雌相眄則產

NATIONAL CENTRAL LIBRARY, TAIWAN



鷹

鷹鷂鳥也一名鷂鳩一歲曰黃鷹二歲曰

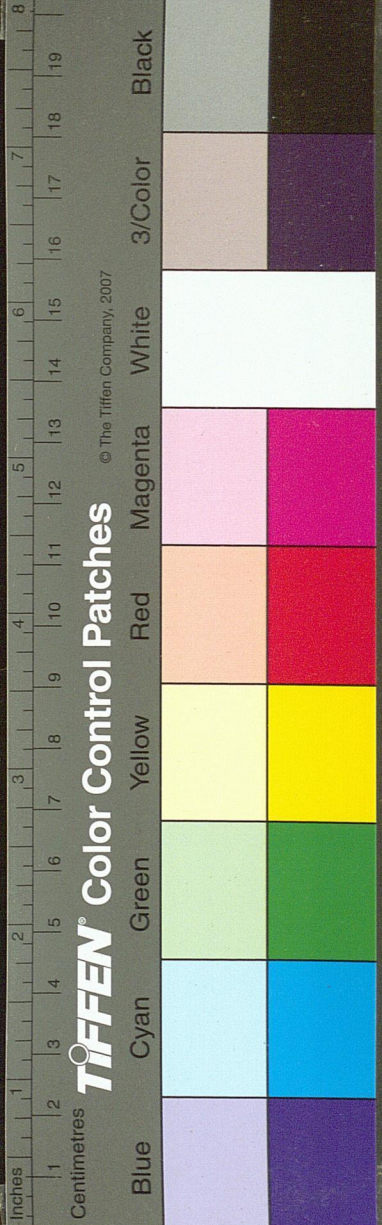
鷹鷂次赤也禽經曰鷹不擊伏鷂不擊

令云鷹化為鳩鷹者其殺之時也鳩鷂

其變而之仁也中秋鳩化為鷹則變

國家圖書館 NATIONAL CENTRAL LIBRARY, TAIWAN, P.R.C.

隼



燕

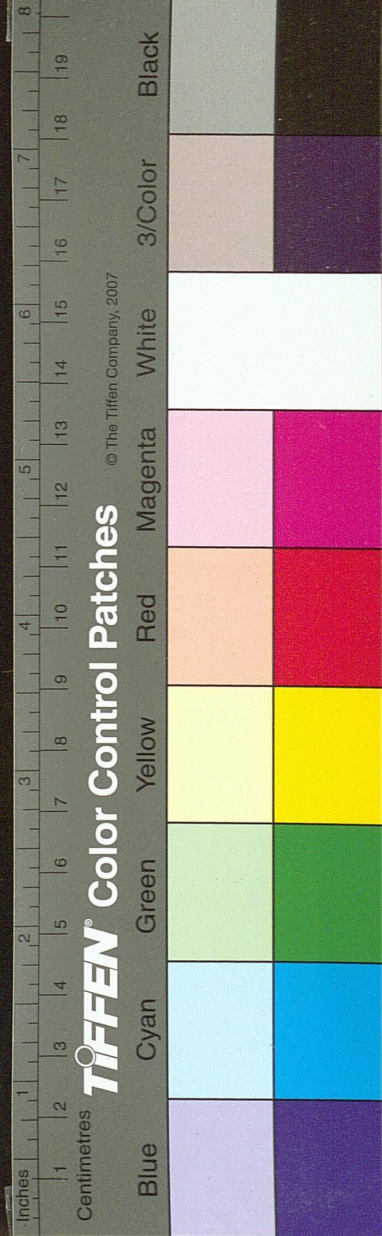


三才圖會卷之鳥部

隼

禽經曰鷹好跖隼好翔隼鷗屬也一名雀鷹蓋迅疾之鳥
 化書曰烏反哺仁也隼憫胎義也蓋隼之擊物遇懷胎者
 輒釋不殺一名題肩

國家圖書館 NATIONAL CENTRAL LIBRARY, TAIWAN, R.O.C.

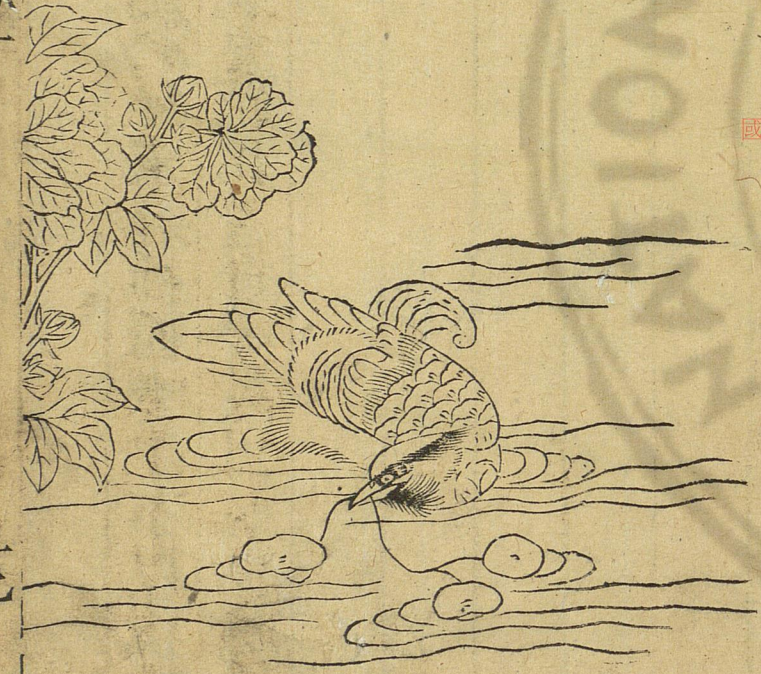


燕

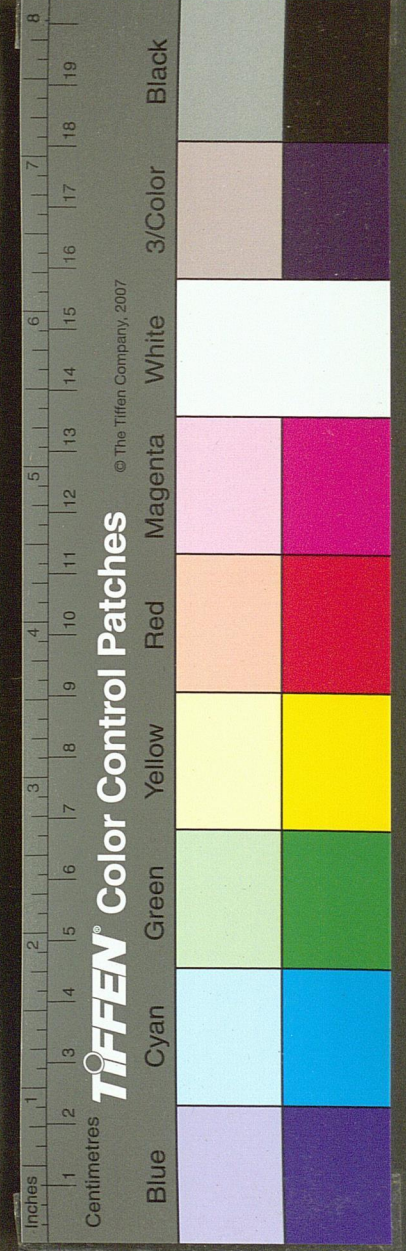
燕一名玄鳥一名鷦鷯往來避社而噉土不以戊巳籥口
布翅枝尾齊人呼鷦蓋取其各自呼故曰鷦也述異記曰
燕經千年生胡髯

鷦

鷦



國家圖書館 NATIONAL CENTRAL LIBRARY, TAIWAN R.O.C.



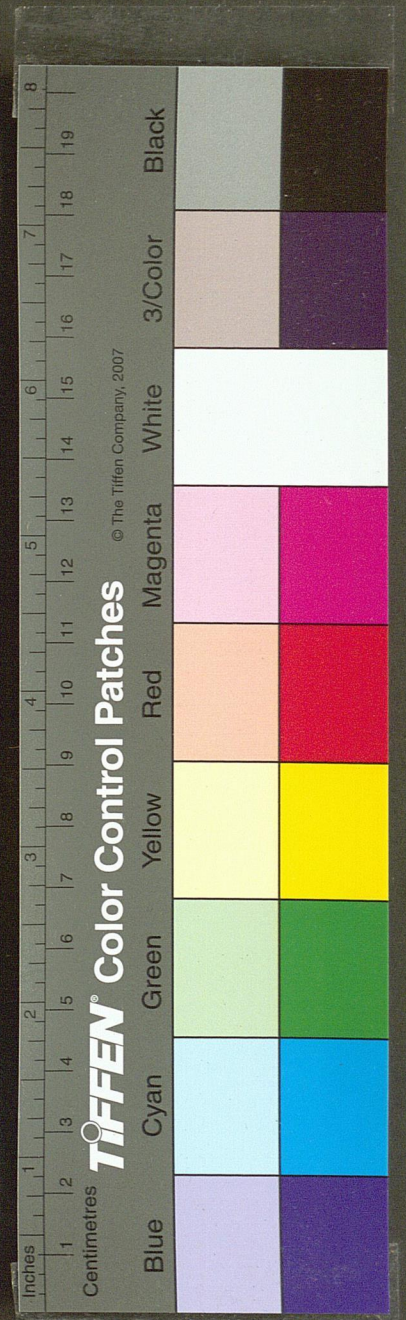
鷓鴣

鷓鴣五色尾有毛如船舵小於鴨性食短狐在山澤中無復毒氣此鳥蓋溪中之物邪逐害者故以名云其浮游雄者左雌者右群伍皆有式度

鷓 鴣



國家圖書館 NATIONAL CENTRAL LIBRARY, TAIWAN, P.R.C.



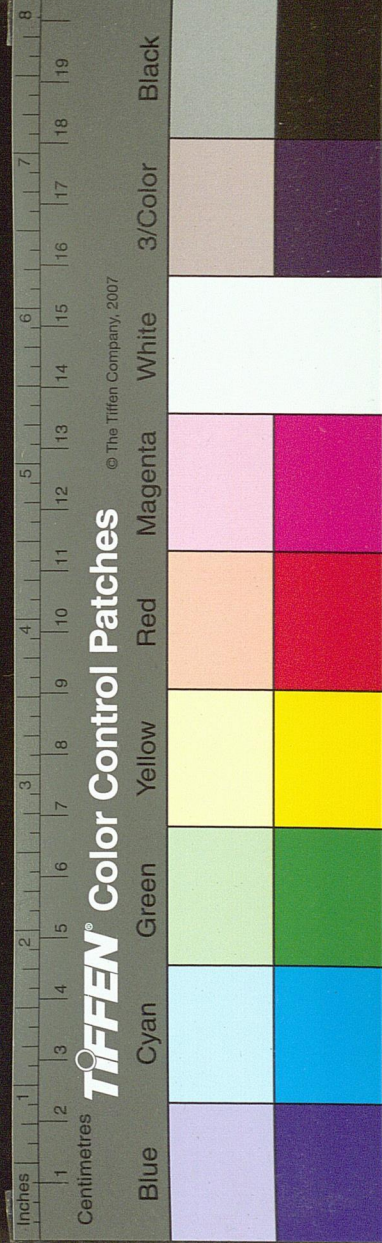
鵲鴿

釋鳥云鵲鴿雖涼蓋雀之屬飛則鳴行則擺大如鷄長脚
尾腹下白頸下黑如連錢故杜陽人謂之連錢物類相感
志曰俗呼雪姑其色蒼白似雪鳴則天當大雪

鴈



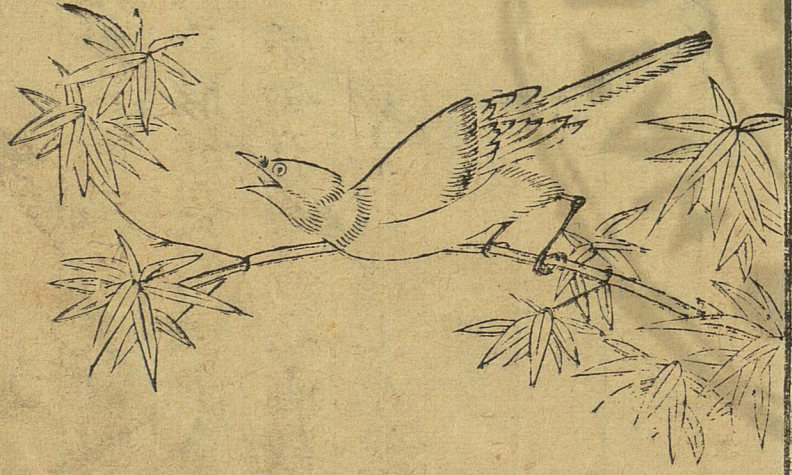
國家圖書館 NATIONAL CENTRAL LIBRARY, TAIWAN, ROC



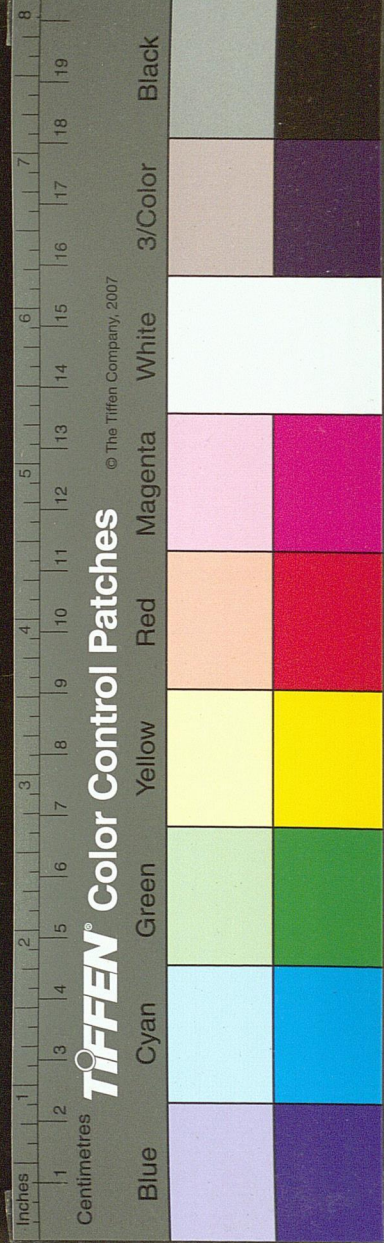
鴈

一名朱鳥霜降南翔冰泮北徂其性惡熱故中國始寒而北至周官以禽作六摯大夫執雁雁夜泊洲渚令雁奴圍而警察飛則銜蘆而翔以避矰繳有遠害之道故取以為摯非特取其有去就之義也博物志曰鴻毛為囊可以渡江不漏

鵲



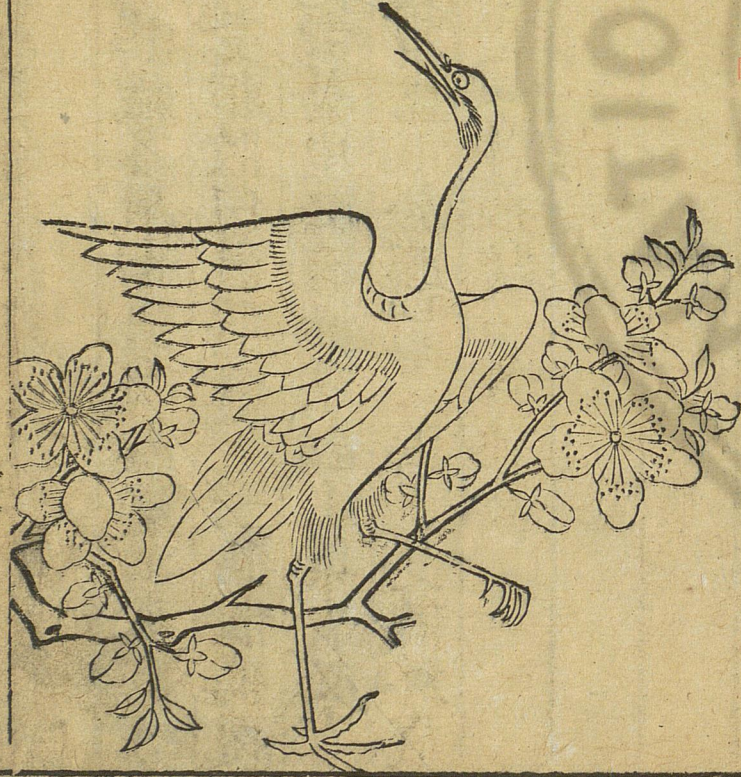
國家圖書館 NATIONAL CENTRAL LIBRARY, TAIWAN, R.O.C.



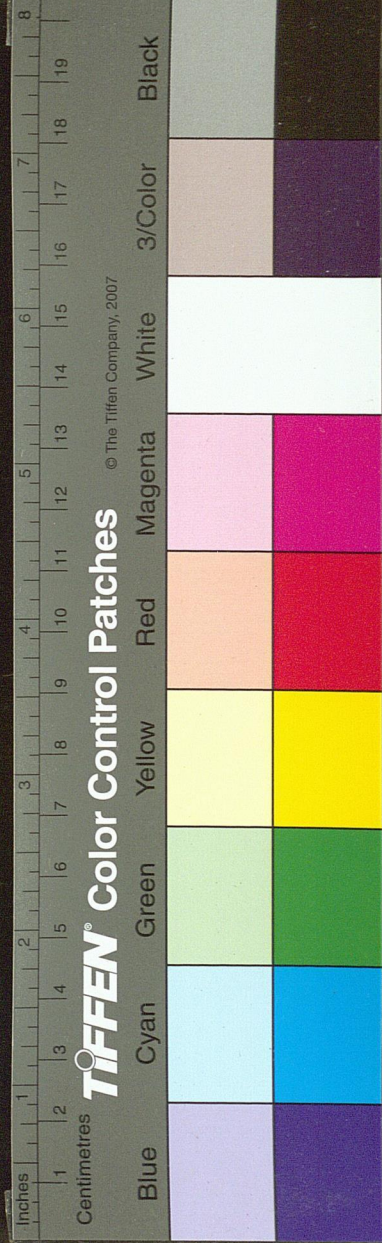
鵲

鵲知人喜作巢取在木枝歲多風則去喬木巢下枝開戶
 嚮天一而背歲皆傳枝受卵故曰乾鵲莊子云烏鵲孺傳
 枝少欲故曰孺也俗說鵲巢中必有梁見鵲上梁者必貴
 天玄主物簿云鵲啄槐實結玉於腦謂之鵲玉此鵲終歲
 不復鳴噪雖巢無胎卵又一名飛駁一名神女

鵲



國家圖書館, NATIONAL CENTRAL LIBRARY, TAIWAN, ROC



鵲

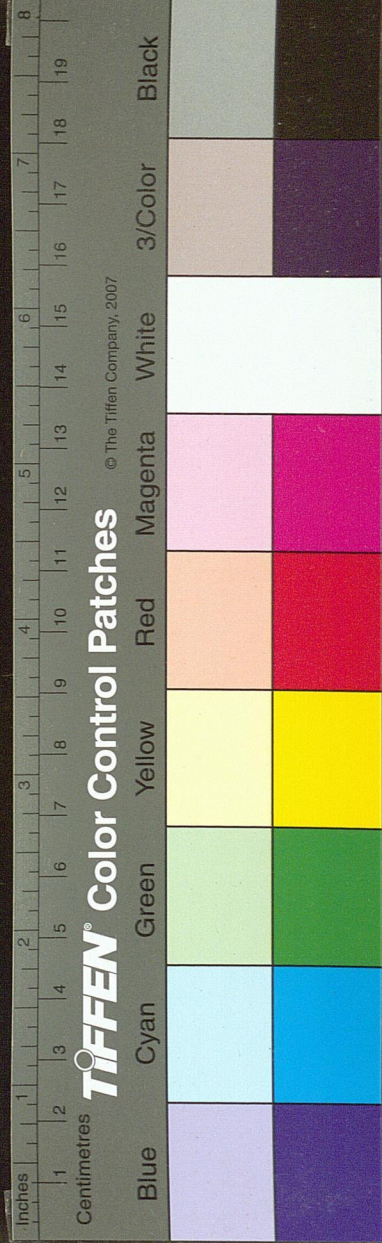
鵲水鳥也形狀畧如鶴其性甘帶每遇巨石知其下有蛇
即於石前如術士禹步其石昉然而轉禽經云鵲俯鳴則
陰仰鳴則晴善群飛薄霄拾遺記曰鵲能聚水巢上故人
多聚鵲鳥以禳却火災

慈

鳥



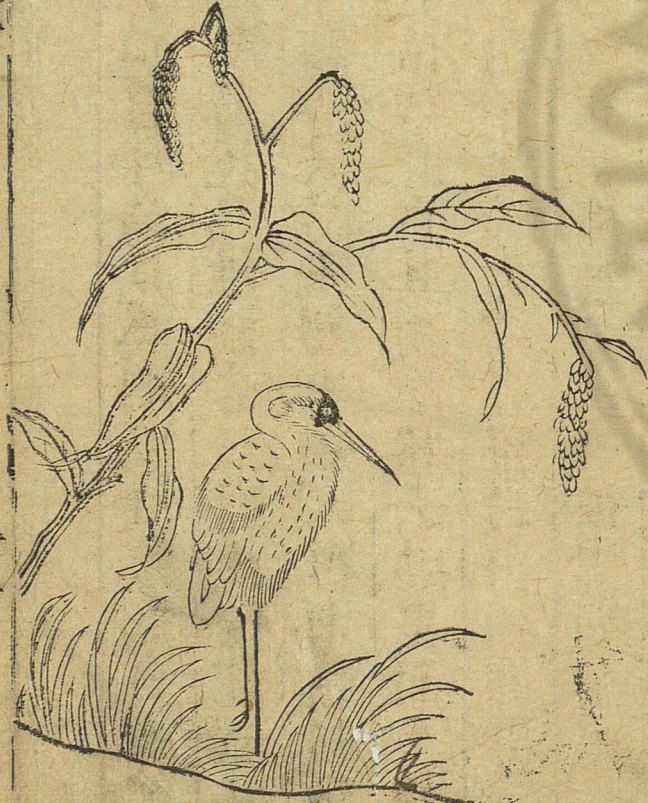
國家圖書館 NATIONAL CENTRAL LIBRARY, TAIWAN, R.O.C.



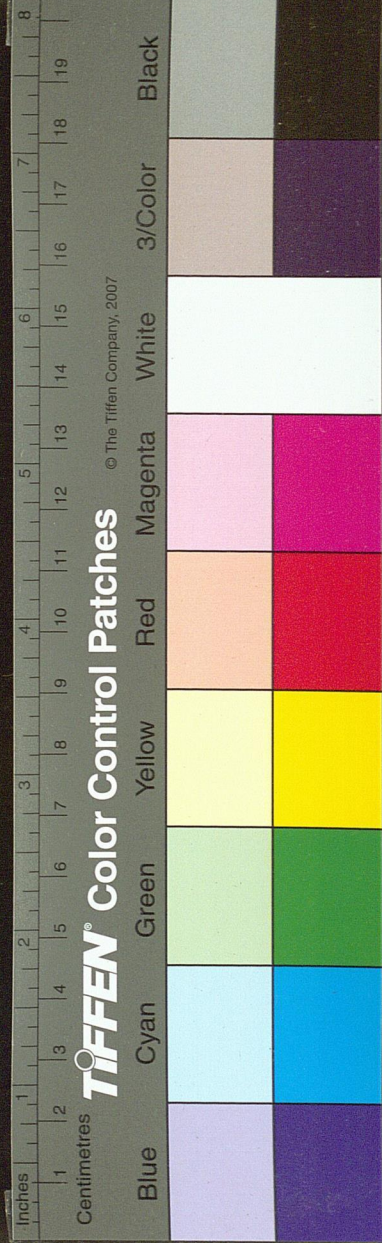
慈鳥

鳥孝鳥也一名鴉其鳴自呼鳥見異則噪故人聞鳥噪則
嚙性樂空曠傳涎而孕舊說鳥性極壽三鹿死後能倒一
松三松死後能倒一鳥俗候鳥飛翅重知天將雨蓋鳥陽
物也感陰氣而重故俗以此占其雨廣雅云純黑而反哺
者謂之烏小而腹下白不反哺者謂之雅烏白項而群飛
者謂之燕鳥白脰烏也雅烏鸞也詩曰弁彼鸞斯是也

鴛

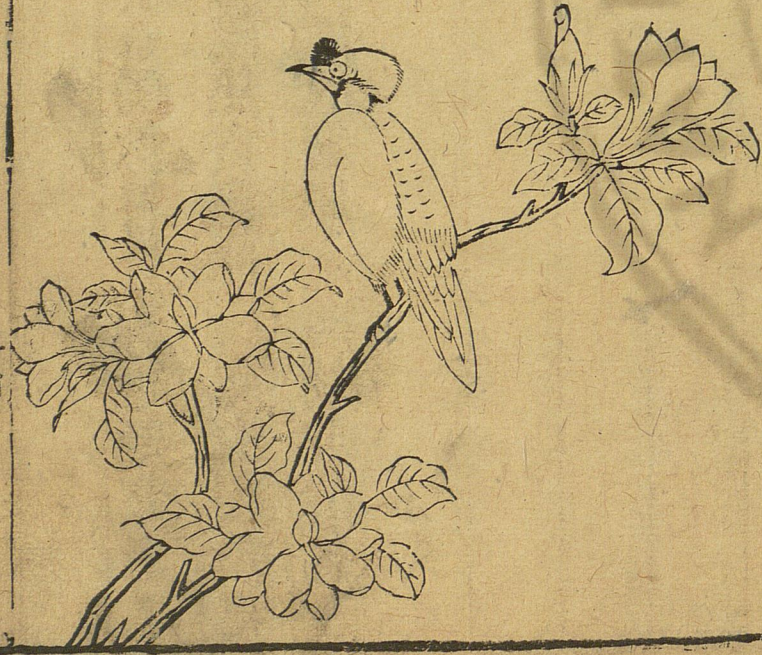


國家圖書館 NATIONAL CENTRAL LIBRARY, TAIWAN, R.O.C.



鵠

鸚



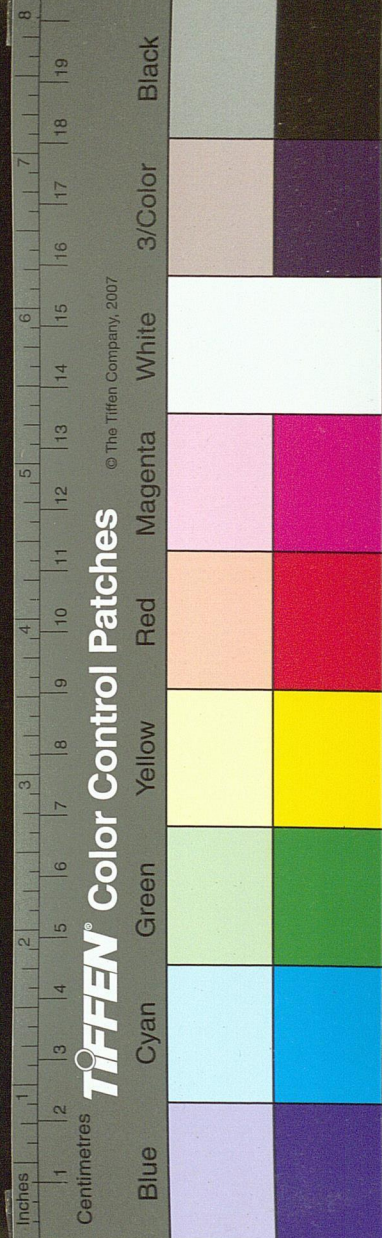
國家圖書館 NATIONAL CENTRAL LIBRARY, TAIWAN, R.O.C.

鵠

鵠似鴈無後指毛有豹文一名獨豹遇鷓鴣能激糞藥之
着其毛悉脫說文曰肉出尺戴焦賁易林曰文山鵠豹肥
膾多脂蓋言此也陸佃曰鵠性淫而無定匹故今指老妓
曰老鵠

三才圖會卷之鳥獸一

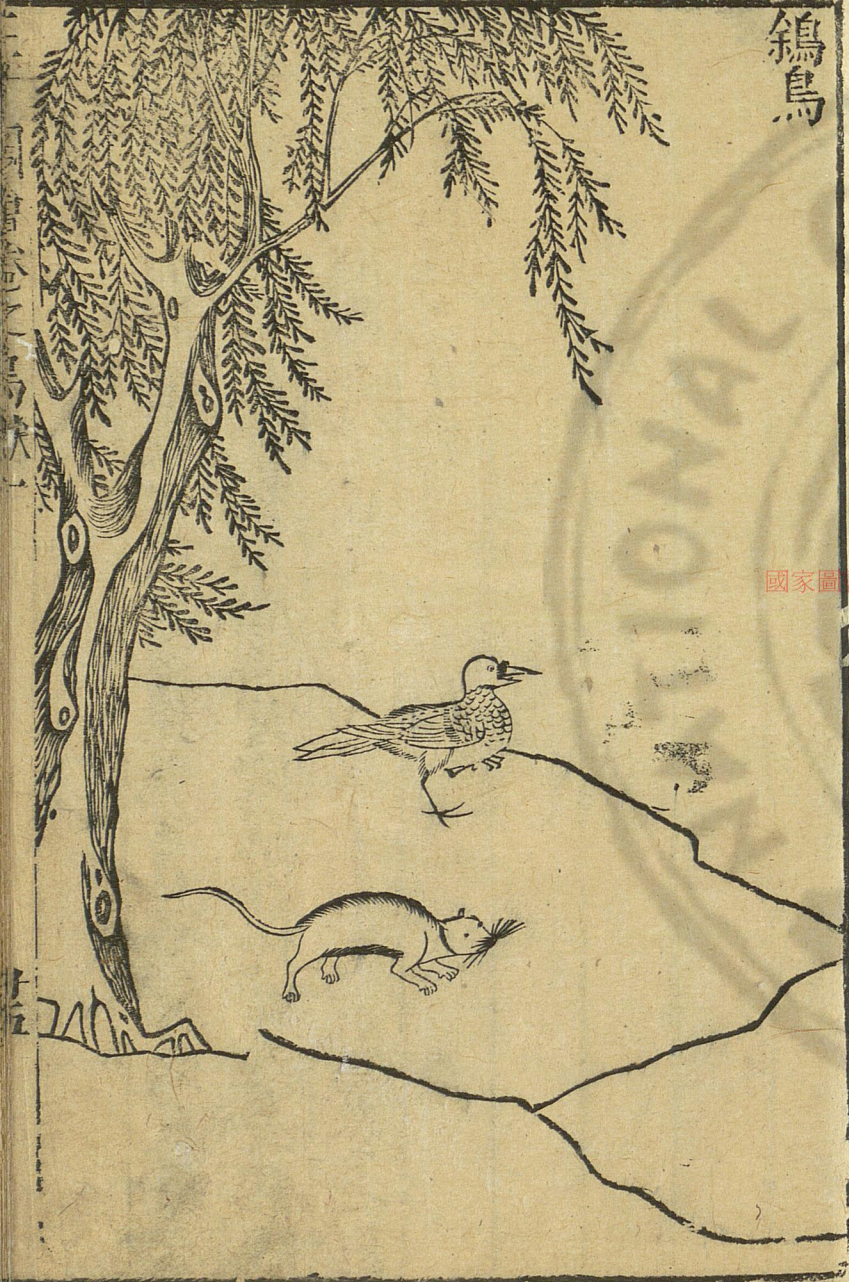
十三



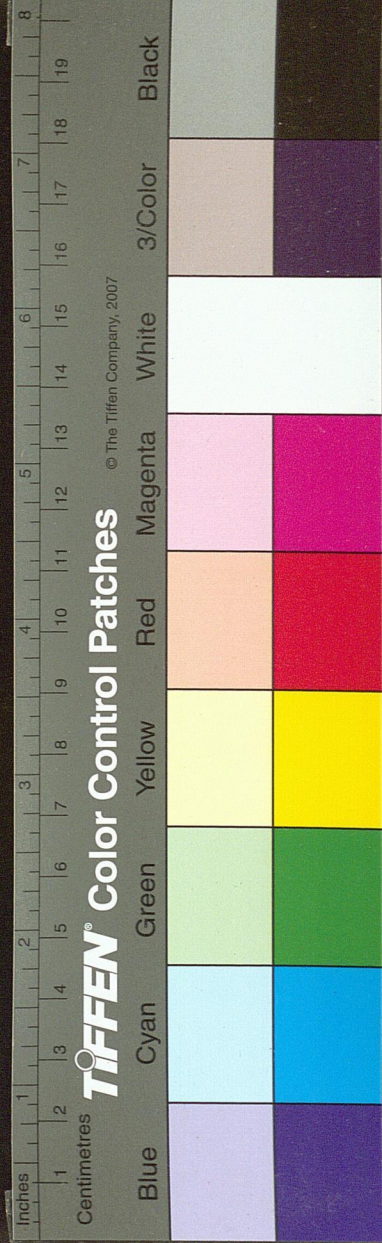
鸚鵡

鸚鵡似鴿而有幘飛輒成群多聲身首皆黑惟兩翼各有白點飛則見舊說鸚鵡不踰濟又穴居故春秋夏有鸚鵡來巢紀異也荆楚之俗五月鸚鵡子毛羽新成取養之以教其語俗謂之花鵡

鷓鴣



國家圖書館, NATIONAL CENTRAL LIBRARY, TAIWAN, T.R.C.



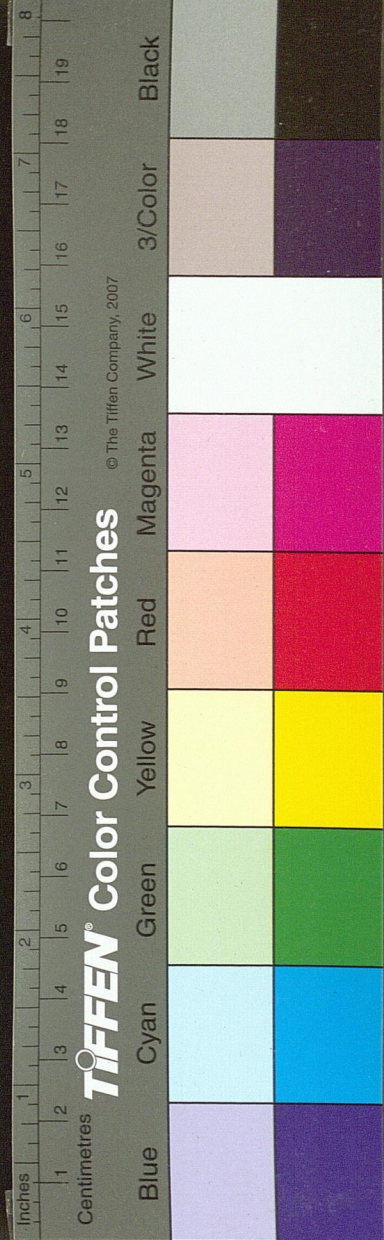
鷓鴣

鳥鼠同穴山爾雅云其鳥為鷓其鼠為鼯音突其穴入地三四尺鼠在內鳥在外在今隴西首陽縣孔氏書傳云共為雌雄同穴而處

雀



國家圖書館 NATIONAL CENTRAL LIBRARY TAIWAN, R.O.C.



雀

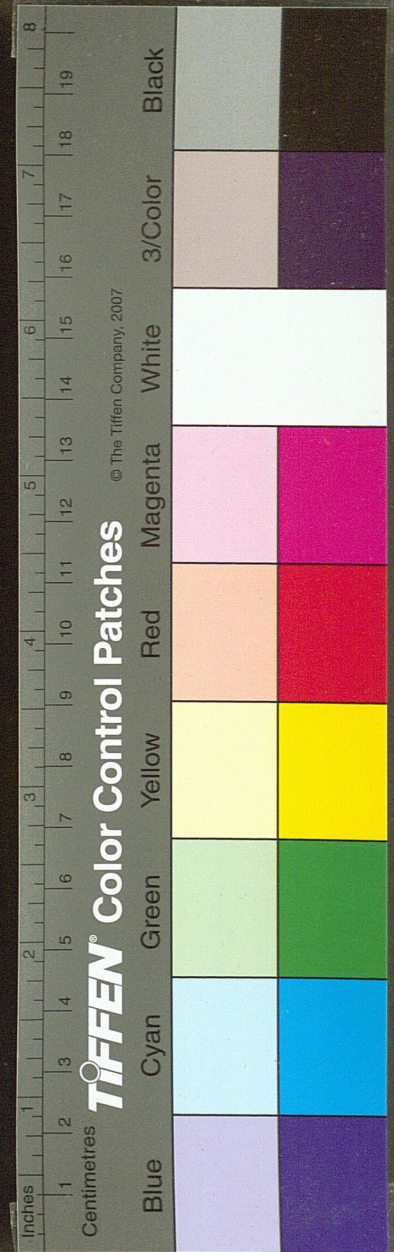
雀物之淫者四時有子其小者黃口貪食易捕老者狡黠
 難取性不能為巢穿屋居之故謂之瓦雀舊說雀目夕昏
 人有至夕昏不物者謂之雀瞽其種不一又有神雀突厥
 雀蒿雀蒿雀身微綠色俗謂草雀也又廣志云安息國大
 雀舉頭高八九尺張翅丈餘食大麥卵如甕

鳩

鷓



國家圖書館, NATIONAL CENTRAL LIBRARY, TAIWAN, R.O.C.



鷓鴣

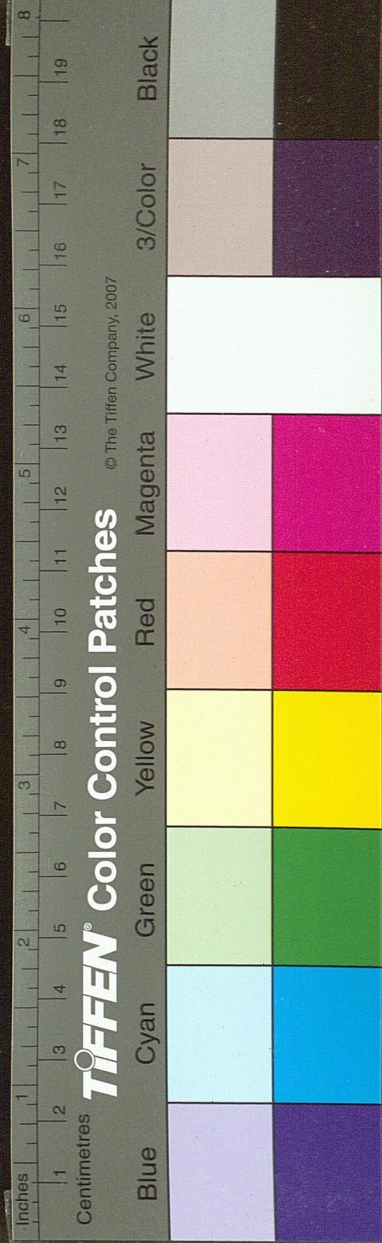
鷓鴣



鷓鴣

鷓鴣自呼其名常向日而飛飛數隨月若正月一飛而止
 畏霜露早晚稀出有時夜飛飛則以木葉自覆其背臆前
 有白圓點文多對啼志常南嚮不思北徂本草曰形似母
 云鈞輶格磔嶺表異錄云肉白而脆味勝雞雉

國家圖書館, NATIONAL CENTRAL LIBRARY, TAIWAN, R.O.C.



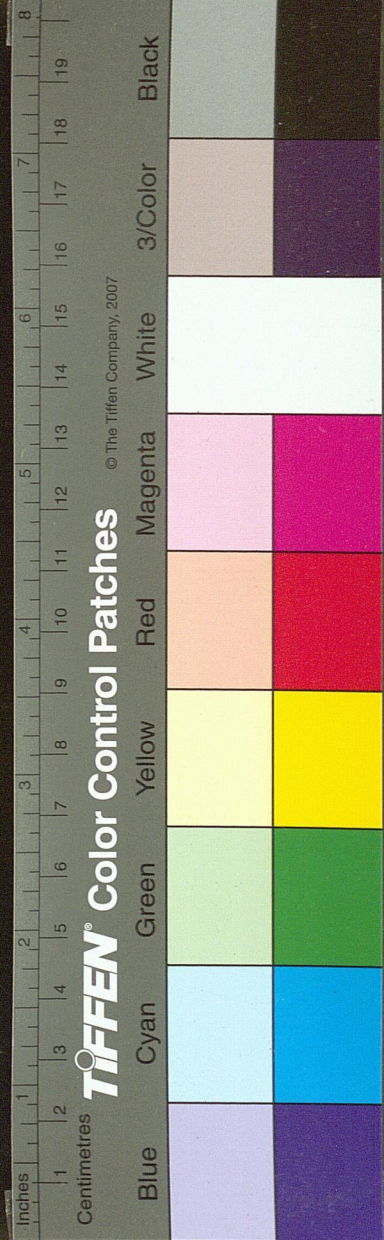
鷓鴣

鷓鴣水鳥嘴曲如鈎食魚入喉則爛其熱如陽其骨王顛
及噎吐而生子多者生七八少生五六相連而出若絲緒
焉夔州圖經稱峽中人謂鷓鴣為烏鬼蜀人皆養此鳥使
之捕魚得魚則倒提出之杜甫詩家家養烏鬼是也

鷓



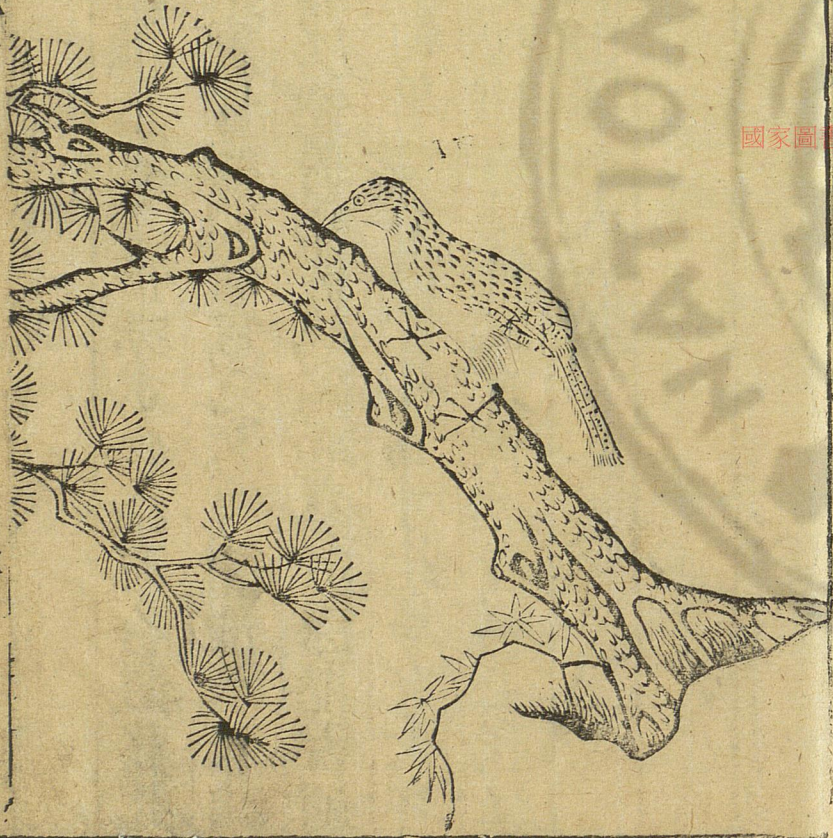
國家圖書館, NATIONAL CENTRAL LIBRARY, TAIWAN, R.O.C.



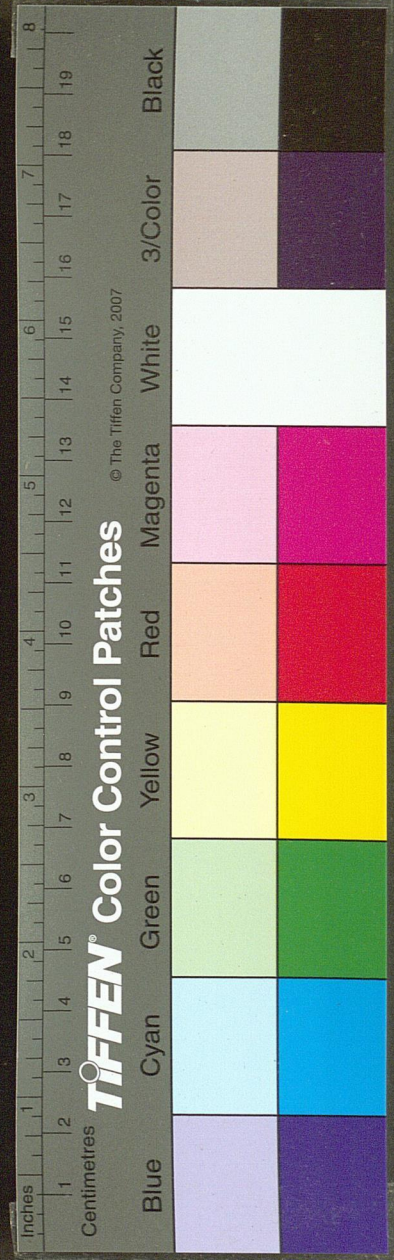
鴟

鴟伯勞也以五月鳴應陰氣之動陽氣為仁義陰氣為殘賊伯勞賊害之鳥也其聲鴟鴟故以為名云其飛不能翺翔竦翅上下而已舊云鴟善制蛇鳴則蛇結或曰金符伯勞之血則昏

啄木鳥



國家圖書館, NATIONAL CENTRAL LIBRARY, TAIWAN, R.O.C.



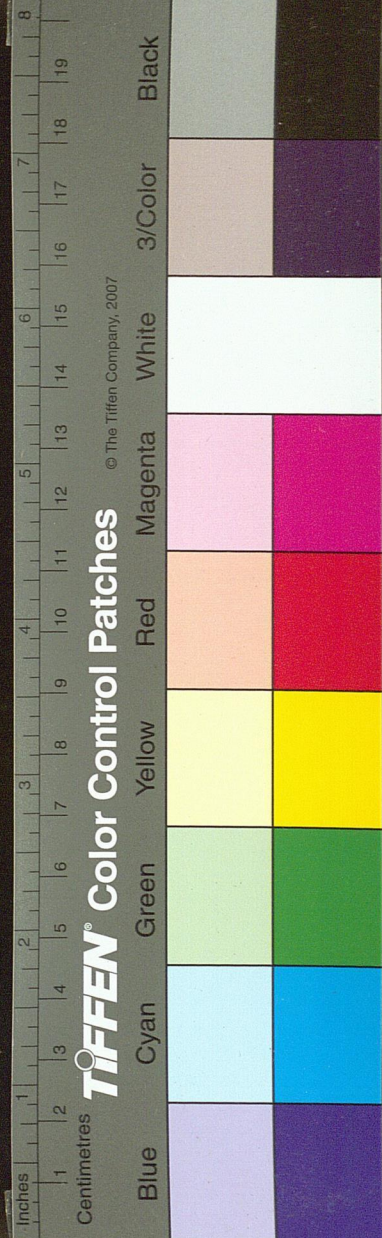
啄木鳥

釋鳥云鴉啄木口如錐長數寸常啄木食蟲因名俗言此鳥善為禁法能曲爪畫地為印則穴之塞自開飛輒以翼墁之鼠嘗竊用其印以發局鏽舊說鴉取蠹於深以舌銛之舌長於味杪有針刺異物志曰舌長五寸此鳥有大有小有褐有斑褐者是雌斑者是雄又有青黑者頭上有紅毛生山中土人呼為山啄木大如鵲

鴉



國家圖書館, NATIONAL CENTRAL LIBRARY, TAIWAN, R.O.C.



鷺鵒 卽鬼車



三才圖會卷之六 鳥獸一

三十一

國家圖書館, NATIONAL CENTRAL LIBRARY, TAIWAN, P. R. C.

鷺

鷺鵒如瘤長脰善鳴又善旋轉其項古之學書者法以動腕羲之好鷺者以此有行列故兵有鷺鶴之陳其性頑而傲蓋鷺我首似傲故曰傲也

三才圖會卷之六 鳥獸一

三十一

