

Historic, Archive Document

Do not assume content reflects current scientific knowledge, policies, or practices.



REGELIO-CYCLUS IRIS
"ANDROMACHE."

Pudor's Puget Sound Grown Iris

FOR SIZE, VIGOR AND QUALITY

They Stand Without a Rival

**1926 PRICES
GREATLY REDUCED**

O. M. PUDOR

Iris and Delphinium Grower and Breeder
PUYALLUP, WASH., U. S. A.



MY "SMILING" POOL

"In one familiar garden let me grow,
Amid the sweetness of the things I love,
Let me brush cheeks with blossoms that I know
And reach to roses beckoning me above.
Transplant me not, O Gardner, but let be
My intertwined roots in this same spot
Where the glad earth received me. Here for me
Are all my joys, my loves. Transplant me not,
Lest, spite of warmer soil and sunnier sky,
In my great loneliness I pine and die."

Please Read Carefully Before Ordering

I can fill no order for less than one dollar, (seeds not included) unless you will pay the postage charges, 15 cents West of the Mississippi and 25 cents East of the Mississippi.

I can usually commence shipping about February 15th, but not later than April 1st, for long distance shipment. Up to April 15th, for near-by points. Owing to our mild climate Iris start early into growth, and when full of sap and moisture they are more difficult to send safely long distances. And don't expect good bloom in June from Spring planted stock; IT CAN'T BE DONE! Except at the expense of your plants; better cut off any developing buds and let the strength go into the plants. There is no doubt in my mind that the ideal planting months are July and August, September, the latest; the rhizomes are practically dormant then even tho' the plants make an enormous root growth with me right after blooming and all Fall up to freezing weather. Of course, this is owing to our wonderfully rich soil and magnificent climate, and the care I give my Iris. The climate of England, and some of its chalky soil, especially around Tunbridge Wells is supposed to grow very superior Iris rhizomes, but from my experience with English Iris roots, and I have bought thousands of them in the past three years, our Iris plants in this Pacific Northwest, and especially in this rich Puyallup Valley at the foot of Mount Rainier beat the English rhizomes to a frazzle, as far as size and vigor are concerned.

I start again shipping about July 1st, but prefer to quit about October 15th, at the very latest, except to California. After that time, except the Siberian and Japanese Irises, plants don't seem to get established before cold freezing weather sets in, and they are liable to get winter-killed.

You will notice that some varieties marked with a * are not available until after the blooming season is over; they are scarce, rare varieties, with me, at least, and I have to get the season's growth out of my clumps, before dividing and selling them; should you select any of such marked varieties, I would advise you to order them in the spring, for July or August delivery, so to make sure you will get them, and not be disappointed; of some, I can spare a very few plants only.

BULBOUS Iris, such as Spanish, Dutch and English, and the Regelia Cyclus, and Onocylus, must and can be planted only in the early fall; Spanish and Dutch Iris bulbs make an early winter growth, and to do their best should be planted in August or September, the latest, hence **ORDER EARLY.**

SPECIAL NOTICE

PLEASE READ

POST-PAID PRICES quoted herewith cancel all previous quotations, either by letter or in printed lists, and are subject to change without notice. A dozen plants will be furnished at ten times the price for one; six plants will be furnished at dozen rates; price for hundred lots or for larger quantities quoted on application.

TERMS: Cash with order. Remittance may be made by postoffice order, express order, bank draft or check.

ORDERS should be sent as early as possible, as stock of rarest varieties is very limited. Orders will be accepted subject to being unsold when they are received. If stock is exhausted, I will return the remittance. **No order for less than one dollar will be accepted, unless postage is added.**

C. O. D. ORDERS will not be accepted unless accompanied by at least one-half of the amount in cash.

SHIPMENTS will be made by Parcel Post **PREPAID**, and in comparing my prices with those of other growers it is well that you bear this in mind. If instructed to be sent by Express, purchaser will pay the charges, and in such cases I can afford (saving the postage) to send you extra strong and large roots(except, of course, in the case of the rare and high priced varieties.

COMPLAINTS, if made immediately on receipt of goods, will be investigated at once, and, if due to my negligence or carelessness, will be promptly rectified.

CULTURE

Any ordinary garden soil, and almost any position suits the Iris, but a rather dry and sunny position is the best; they object to fresh stable manure, which should be avoided when planting. If the best results are desired they should be planted on good deep rich soil which must not be deficient in lime. The latter constituent is of the greatest importance in the cultivation of Bearded Irises, and it must be added to the soil if not present in sufficient quantity. It is a good plan to give a dressing of super-phosphate when transplanting, and a dressing of powdered chalk in the Autumn and Winter.

A LARGE ILLUSTRATED IRIS CATALOG

(Not in colors)

A Reference Book and Manual—Price 15 cents

For a more detailed description of any and all of the Iris varieties offered in this list, send for my large, illustrated catalog, also containing several valuable articles and treatises. A. J. Bliss (Varieties for the Garden), W. R. Dykes's interesting and helpful article. "How to Hybridise Irises", by Sir Arthur Hort, and a complete Color Classification of the Iris. This is the most comprehensive and largest Iris catalog published in the United States, describing in detail over 250 varieties of Irises, besides the bulbous Irises. No prices are given in this catalog manual for the reason that it will be sent out, and used by gardeners for, at least, two years, in the meantime, prices of new and rare Iris varieties will be reduced, possibly twice a year, while the catalog has still a large circulation; it is therefore detrimental and misleading to quote prices in such a permanent catalog; therefore, I will publish, and send out free of charge, each year—a new revised, brief descriptive price list.

Owing to its great expense, and from the fact that many catalog collectors and disinterested people write for it, I am compelled to make a small charge of 25 cents (in stamps or in coin) for this manual. You will find it a valuable reference book, worth three or four times what I ask for it. You may deduct this 25c from your first order amounting to \$2.50 or more.

THE OUTSTANDING IRISES IN MY GARDENS LAST SEASON

Many hundreds of Iris lovers visited my Gardens last season; they came from near and far; it was very interesting to me to make observations as to what Irises and colors appealed to each individual. There were a few varieties which appealed to everyone, and you may be interested to know just what they were. I should say that at the head of the list stood **Ambassadeur**, **Asia**, **Ballerine**, **Crusader**, **Lord of June**, **Lady Foster**, **Prospero** and **Souvenir De Madame Gaudichau**. Of the low priced and old varieties, these appealed to everyone: **Alcazar**, **Caterina**, **La Neige**, **Oriflame**, **Pallida**, **Princess Beatrice**, **Tamerlane**, **Prosper Laugier**, **Rhein Nixe** and a few others. **Lent A. Williamson** was universally admired, and so was, of course glorious **Alcazar**.

New, shining lights of real merit and garden value, universally praised and admired, were: **Madame Durand**, **Julia Marlow**, **Morning Splendor**, **San Gabriel**, **R. W. Wallace** (the new tall glorified Archeveque by Perry) and **Emily Tenney**, a new Pudor seedling of which you will hear more anon.

Mlle. Schwartz was much made of, and so was **Dream**; I said last year somewhere that a large plant with many flower stalks was just like a **Dream**, a sweet and lovely one.

Seminole, of which I had a large bed in full bloom, proved to be a winner; from a distance of 100 feet it was a wonderful sight, almost like a red cloud; in some respects I like it fully as well as **Opera**; it is not as large, the color not quite as dark, but **Seminole** grows much taller. I have reduced both varieties to 75 cents. for this year.

Prosper Laugier was purchased by nearly every visitor, and was much admired, and so was the lovely, late blooming **Rhein Nixe**. Everyone was inclined to "linger-longer" at that fascinating Lady of the Iris Garden, lovely **Isoline**, being one of the most popular varieties.

Many visitors exclaimed: "Oh, I must have that," pointing to that old but ever lovely and most beautiful Iris, "**Pallida Dalmatica**, or **Princess Beatrice**," and the some-

what darker Pallida, "Albert Victor", was always included. Both are exquisitely fragrant, and speaking of fragrant Irises, "Fairy" reminds one of sweet Orange blossoms; it is probably the sweetest of all Irises. "Caterina" is very similar in fragrance, and so is "Lord of June" and "Oriflamme."

Siberica "Perry's Blue", Butterfly and Emperor were bought by everyone who saw them in bloom.

My Regelio-Cyclus Iris were wonderful; large, handsome, rich-colored and heavily veined blossoms, on the order of Susiana, but of much easier culture.

I wonder if you have that old, old, but most beautiful and lovely Iris, "Florentina Alba," in your collection; the size and the texture of the blossoms are as fine as any ten dollar Iris, the color, a pear-white, most appealing, and the fragrance sweet as apple blossoms; it blooms very early, is very floriferous, and blooms for many weeks.

"Zua" is another early Iris, and its crinkled blossoms most beautiful, if it had only a longer stem; it is quite low growing.

I emphasize what I tried to impress upon my customers and friends last year; plant other flowers right among your Irises. What a lovely picture it makes to see a clump of long spurred pink or lavender Columbines snuggle up against some pink or lavender Iris. The pink Oriental Poppy becomes a dream when planted with Oriflamme, Lohengrin or Dallamatica, or others of similar color, and Yellow Day-Lilies among the Lord of June, or Lohengrin, or Shekinah, or yellow Aurea, are too lovely for words. Lupine is another plant that blooms at Iris time; my Lupine "Pink Beauty" adds wonderful charm to an Iris planting, and I am growing now new English Hybrids, marvelous, long stemmed varieties in wonderful art or bronze shades, suitable for such close companionship as Alcazar, Prosper Laugier, Dr. Bernice. Indeed, the possibilities of an Iris Garden are many fold and wonderful, but don't have just an Iris Garden, have a Spring Flower Garden, filled with April flowering, sweet scented dwarf Iris in white, lovely purple and yellow colors, peeping out here and there among the early Daffodils, then the May flowering varieties with tall Tulips here and there; continue the grand procession with the many hued and gorgeous tall June flowering sorts, waving their tall, lovely blossoms among the graceful, lovely Columbine blossoms, the Pyrethrums, the Lupines and the lovely, but little known Sweet Rocket, or Dame's Violet (Hesperus) which comes in white, dark-purple and lavender shades; of course, in an Iris Garden, Iris must predominate or it would not be an Iris Garden, but I am sure that in such planting as I have vaguely suggested, the Iris will grow dearer to your heart, and prove more charming and fascinating in the eyes of all garden lovers than ever before.

NOTICE! PLEASE, READ BEFORE ORDERING

PRICES OF SINGLE RIZHOMES OF THE NO. 1 AND NO. 2 SIZES INCLUDE POSTAGE TO YOUR DOOR.

IF YOU ORDER 3 OR 6 OF ONE KIND, PLEASE ADD 2 CENTS ADDITIONAL FOR EACH ROOT TOWARDS THE POSTAGE; DO NOT FAIL TO DO SO.

**GROUP I
APRIL FLOWERING DWARF IRIS
(IRIS PUMILA)**

Rating	Post-Paid Prices Each
Alba (Syn. The Bride) Whitish	\$0.25
Azurea. Lovely sky-blue25
65. Cyanea. Violet-blue25
73. Excelsa. Yellow25
64. Orange Queen. Clear Yellow25
74. Schneekuppe (Snow-top) The best white25

The above are admirably adapted for borders or edgings with tufts of foliage 3 to 4 inches high, with many very large flowers, exquisitely fragrant, blooming in March or early April.

6 of one kind—No. 1 size \$1.25 or 3—65 cents.

6 of one kind in No. 2 size 75 cents; 3 for 40 cents. You can not mix the different varieties at these prices.

GROUP II.
INTERMEDIATE IRIS
EARLY MAY FLOWERING

This group flowers right after the early Pumilas, and before the tall June Iris bloom; most of them flower before and right at Decoration Day; they fill a great need in the garden.

Rated	Each	3 for
67. Blue Boy. Violet	\$0.25	\$0.65
89. Crimson King. Claret Purple25	.65
71. Dolphin. S. light blue; F. violet-purple; a very large lovely early Iris25	.65
76. Florentine Alba. Pearl white25	.65
74. Fritjof. Blue and purple25	.65
66. Helge. Pale yellow25	.65
77. Ingeborg. Very fine pure white25	.65
73. Ivorine. White25	.65
74. Kharput. Violet25	.65
78. Kochii. Dark purple25	.65
74. Purple King. Rich red purple; wonderful color25	.65
73. Walhalla. Lavender blue and purple25	.65
75. Zua. Pearl-white, crinkled75	2.00

GROUP III.
TALL JUNE FLOWERING IRIS (GERMANICA)

These varieties marked thus: "*" will not be disturbed in the spring and are not offered for delivery until July or August. Varieties not priced, are not for sale until 1927 owing to the great scarcity, and the consequent high prices.

Rated	Each	3 for
90. Afterglow. Grayish lavender and yellow	\$0.50	\$1.35
79. Albert Victor. Light hyssop violet30	.75
89. Alcazar. Light mauve, overlaid bronze. F. deep purple. One of the finest60	1.50
78. Amas. Light blue; deep purple violet. Immense flower35	.90
94. Ambassadeur. One of the best. Reddish-violet; velvety violet	1.25	3.50
83. Ambigu. Smoky red, deep purple; very rich color75	2.00
*... Angelo. Lavender violet	1.00
86. Ann Page. Light wisteria violet; a lovely pale lavender	5.00
84. Anna Farr. White with blue border and base	1.00	2.75
*96. Aphrodite. Pure bright violet-pink self; one of the finest	10.00
83. Archeveque. Rich violet purple, F. bright velvet crimson35	1.00
78. Arnols. S. rosy-bronze; F. rich velvety purple35	1.00
92. Asia. S. pale lavender suffused yellow. F. light violet-purple	5.00

Rated		Each	3 for
74.	Aurea. A good clear yellow	.30	.80
*79.	Autocraat. S. bright clear blue; F. veined dark or blue	1.50
87.	Avalon. Pale mauve to light lavender violet	7.50
80.	Azure. S. lavender blue. F. deep violet blue	.50	1.25
94.	Ballerine. S. Pearl blue. F. violet	1.00	2.75
*	Baronet. S. Chickery blue. F. deep violet	1.00
85.	B. Y. Morrison. S. pale lavender-violet. F. velvety raisin purple..	1.00
78.	Black Prince. Velvety dark purple	.25	.60
84.	Black Prince. (Perry) Velvety rich purple	1.00	2.75
83.	Blue Bird. Bright-blue self	1.50	4.00
71.	Blue Jay. S. light violet. F. dark violet	.25	.70
91.	Brandywine. A clear china silvery blue	2.50
79.	Camelot. Very tall. White delicately fringed with light lavender.	.50	1.25
75.	Caprice. Rosy red. One of the best "reds"	.30	.75
81.	Carthusian. Clear lavender and dark blue	.50	1.25
89.	Caterina. Delightful shade of soft lavender-blue	.35	1.00
71.	Celeste. Pale verbena violet	.25	.60
New.	Chasseur. The finest tall, deep-yellow Iris	Not for sale	
*80.	Col. Candelot. S. smoky copper. F. velvety crimson	1.00
69.	Chester J. Hunt. A wisteria violet	.35	1.00
78.	Clematis. Light lavender-violet	.75	2.00
*	Conquistador (Mohr) Very large and tall. Deep mauve to light violet	5.00
83.	Corrida. Analine blue	1.00
86.	Cluny. A lovely shade of pale lilac-blue	.90
87.	Crusader. One of the finest lavender blue	.90	2.50
84.	Cretonne. S. pale bronze-purple. F. rich red maroon	1.00
80.	Dalila. S. pale lavender, flesh tint. F. rich red purple	.50
68.	Darius. S. Chrome yellow. F. purple and gold	.25	.60
78.	Dawn. Pale Marguerite yellow	.50	1.25
83.	Dejazet. S. dusky rose-orange. F. reddish violet	.75	2.00
82.	Deliatissima. Delicate lilac	.75	2.00
70.	Dimity. Pure white, flushed slightly blue	.50
91.	Dominion. Light bluish violet. F. rich purple	Oversold for 1926	
78.	Dora Longden. S. cream buff, flushed pink. F. magenta, fading to rose-purple at edge	.50
85.	Dream. Lilas, almost a pink	1.00	6 for 5.00
74.	Dr. Bernice. S. Coppery bronze. F. velvety-crimson	.25	3 for .60
*	Dusky Maid. S. pale buff. F. deep mauve-purple	1.00
New.	Eden Phillips. Unifrom dark lavender blue. A gem	.50
86.	Eduard Michel. Deep wine red, much like Caprice	.75	2.00
	E. H. Jenkins. S. palest steel-blue purple. F. deeper shade	1.50
78.	Eldorado. S. yellowish bronze shaded heliotrope. F. violet with bronze-yellow	.40	1.00
75.	Empire. A clear empire-yellow	.50
80.	Fairy. White, bordered and suffused light blue	.25	.60
89.	Georgia. Soft shade of cattleya-rose; mass effect is pink	1.50
65.	Gertrude. A uniform deep violet-blue. Very fragrant	.30	.75
75.	Goldcrest. Bright violet-blue, one of the best blues	.75	2.00
85.	Grevin. S. violet tipped yellowish brown. F. rich velvety violet-purple	.75
*88.	Halo. S. lavender-blue. F. violet blue. A mammoth flower	1.00
*	Harriet Presby. Two shades of petunia-violet, like a cattleya orchid	Not for sale this year
73.	Her Majesty. A deep rosy lilac-pink; deeped than Queen of May A much admired Iris	.30	.75

Rated		Each	3 for
88.	Hermione. Light blue-purple and darker falls. Late	3.00	8.00
74.	Hiawatha. S. pale rosy-lavender. F. purple. Late	.40	1.00
71.	Innocenza. Pure white; a lovely flower	.40	1.00
79.	Iris King. S. old gold. F. rich velvety crimson-maroon edged gold	.40
New.	Isis. A glorious violet-blue self Pallida	2.50
86.	Isoline. S. Silver lilac. F. purplish old-rose and gold	.40	1.10
80.	Jacquiesiana. Copper-crimson standards. F. rich maroon	.40	1.00
78.	Jeanne D'Arc. White with light lavender frilled edges	.25	.60
*	Julia Marlow. S. Chinese violet. F. raisin purple; a pink and red effect	Not for sale this year	
81.	Juniata. A lovely clear violet; deeper than Albert Victor	.40	1.00
74.	Kharput. See under Group 2.		
76.	Knysna. S. clear yellow. F. deep velvety brown	.90	2.50
78.	Kochii. See under Group 2.		
83.	La Neige. Glistening pure white; one of the best whites	1.00
85.	Lady Foster. Pale blue and light bluish violet. Fragrant	1.00
90.	Lent A. Williamson. S. bright lobelia blue. F. velvety pansy violet. Very similar to Alcazar	.90
82.	Lohengrin. S. light mauve. F. bright pale violet	.35	1.00
91.	Lord of June. Light blue and lavender violet. Fragrant	.90
*	Lord Lambourne. Rose-fawn suffused pale bronze. F. rich crimson with white base	7.50
79.	Loreley. S. lemon yellow. F. blue purple margined cream	.25	.60
81.	Ma Mie. White pencilled light violet; very large; much superior to Mme. Cherau	.35	1.00
74.	Madame Chereau. S. white edged blue. F. frilled blue	.25	.60
*85.	Madame Chobaut. Pale citron yellow. F. faintly veined pale brownish	1.00
*84.	Madame Cheri. Ageratum violet with pink. A beautiful, refined tall Iris	2.00
	Madame Durrand. S. tawny buff. F. rich creamy yellow, shading to buff overlaid with mauve	3.00
93.	Madame Gaudichau. See Souvenir de Mme. Gaudichau	2.00
	Madame Pacquette. Bright rosy-claret	.30	.75
87.	Mlle. Schwartz. A delightful shade of the palest mauve	2.00
*79.	Mady Carriere. S. grayish lavender. F. blue shading to yellow	1.00
91.	Magnifica. S. light violet blue. F. dark reddish violet	1.50	4.00
71.	Mandalay. A beautiful pale violet self; a stronger grower than Catarina	.50
75.	Mandrasliscea. Dark lavender purple	.30	.75
*	Marion Mohr. A most beautiful self of Pallida-Catarina type; will probably rate 90 to 95; resembles Queen Catarina	Not for Sale	
73.	Mary Garden. S. pale yellow flushed lavender. F. creamy-white dotted and veined maroon	.40	1.00
	Mary Orth. (Farr 1922) Type of Hiawatha but decided improvement. S. Violet, F. violet with veined light haft. High branched and vigorous	1.50	4.00
87.	Marsh Marigold. Light golden yellow, rich red falls, edged yellow	2.00	5.50
76.	Mauvine. A tall mauve self	.40	1.00
85.	Medrano. Rich dark violet, almost a bronze smoky red	1.50	4.00
*83	Merlin. S. lavender violet. F. rich pansy violet	1.00

Rated		Each	3 for
81.	Mesopotamica. Lavender violet, poor grower	1.00
	Mildred Presby. (Farr, 1923). Bicolor. S. pale yellow; F. velvety violet; strong contrasting color; exceptional fine substance	2.50
78.	Minnehaha. Large cream colored flowers with heavy dark red lines on the Falls50	1.25
	Miranda. Clear violet blue with orange beard	1.00
75.	Mithras. S. light yellow. F. wine red with border of deep yellow..	.30	.75
*85.	Moliere. S. dark violet. F. darker velvety violet	1.00
84.	Monsignor35	1.00
83.	Montezuma. S. old gold spotted with bronze. F. pale yellow margined with bronze35	1.00
	Morning Splendor. S. Petunia violet. F. raisin purple; a brilliant red effect	5.00
78.	Morwell. A giant pale blue purple; stronger than Caterina	1.00
*	Mother of Pearl. A pale bluish-lavender of great beauty and size. Only 50 for sale in the fall at	2.00
82.	Mt. Penn. S. lavender-rose. F. crimson and violet. A charming Iris	.50
76.	Mrs. Alan Gray. Delightful lilac shade; fine for massing. Blooms a second time in August and September40	1.00
78.	Mrs. Cowley. S. coppery buff. F. deep rich rosy-purple50
68.	Mrs. H. Darwin. Very beautiful free flowering white25	.60
68.	Mrs. Neubronner. Yellow25	.60
	Mrs. Tinley. An intense violet-blue, with a golden blotch	1.00
	Mrs. Walter Brewster. S. lavender-blue. F. aniline-blue	2.00
71.	Mrs. W. E. Fryer. S. white, shaded heliotrope. F. purple-crimson	.50
74.	Naushon. Mauve and pansy violet50
74.	Navajo. S. light bronze yellow; F. deep maroon. Very beautiful...	.40	1.00
81.	Neptune. S. bright pale-blue; F. rich dark purple-blue90	2.50
73.	Nibelungen. S. fawn. F. red-purple on bronze35	1.00
*	Nimbus. S. light lobelia-violet. F. continga purple. Makes a "steel-gray" effect	5.00
80.	Nine Wells. S. light violet. F. deep purple-violet; dark and velvety50
76.	Nuee O'Orage (Storm Cloud). S. slate grey. F. bronze nad purple	.50	1.35
*	Ochracea-Coerulea. (Sunset) S. yellowish-buff. F. same intermingled with blue	2.00
87.	Opera. Rich red violet with yellow center; very fine75
79.	Operto. Almost a red purple with yellow beard50
78.	Oriflame. Immense flowers. S. bright blue. F. dark purple60
88.	Pallida Dalmatica (Princess Beatrice). A lovely, clear lavender with a silvery sheen; one of the oldest and best40	1.00
81.	Parc DeNeuilly. Rich plum-purple40	1.00
75.	Pauline. Rich pansy-violet35	1.00
78.	Perfection. S. light lavender. F. velvety violet; very floriferous..	.30	.75
71.	Petit Vitry. S. bright violet. F. purple violet75
89.	Phyllis Bliss. A magnificent rosy-pink lavender	5.00
77.	Pocahontas. White frilled violet-blue40
83.	Prosper Laugier. S. light bronze-red. F. deep velvety crimson...	.40	1.00
	Prospero. One of the finest. S. pale lavender. F. rich deep violet-purple	1.25	3.50

Rated		Each	3 for
84.	Quaker Lady. Ageratum violet, softly blended yellow35	1.00
91.	Queen Caterina. Pale lavender-violet	1.00
74.	Queen of May. Soft rosy lilac-pink25	.60
*	Ramona. (Mohr). A very beautiful Iris, as undescribable as Quaker Lady	2.00	
84.	Rhein Nixe. S. white, F. pansy violet; very late35	1.00
76.	Ringdove. S. pale lavender-violet. F. deep lavender-violet75	2.00
*	Robert W. Wallace. A magnificent dark Pallida. S. rich violet. F. Purple black. It's a glorified Archeveque	4.00
82.	Roseway. Deep red-pink flowers90	2.50
*90.	San Gabriel. Lavender flushed rosy mauve	5.00
*80.	Sarpedon. S. light bluish violet; F. hyacinth violet	1.00
83.	Seminole. A gem; almost a "red" Iris. Better than Opera75	2.00
77.	Shalimar. Rich blue and purple50
87.	Shekinah. Beautiful pale yellow Pallida	1.50
76.	Sherwin Wright. Golden yellow, but small25	.60
83.	Sindjkhat. S. deep lavender. F. violet	1.00
*	Soledad. (Mohr). A lovely early amber yellow of unusually clear tone	2.00
93.	Souv. De Mme. Gaudichau. A wonderful velvety black purple	2.00
81.	Stamboul. Light blue and rich violet blue; fragrant50
*	Steepway. S. fawn-reddish. F. rosy-mauve, shading to blue	2.50
	Sunset. See <i>Ochracea-Coerulea</i> .		
*75.	Syphax. S. pale violet. F. deep crimson-purple; very beautiful...	1.00
85.	Sweet Lavender. S. pale lavender- blue. F. deep rosy-lavender. Blooms a second time in September	1.00	2.75
*74.	Tamar. S. reddish-lilac. F. veined and suffused deeper75
74.	Tamarlane. A magnificent deep purple violet50
85.	Tartarin. Pale lilac lavender-blue	1.00
80.	Tom-Tit. A deep self violet-blue; very floriferous50
	Trianon. S. yellowish-buff suffused with palest lilac. F. deepening to lavender	1.00	2.75
82.	Tristram. S. clearest white. F. deep rich purple	1.00	2.75
81.	Trojana. S. light violet blue. F. deeper35	1.00
84.	Troost. S. deep rosy-purple. F. paler veined violet, changing to brown75
	Turco. S. purplish-lilac with bronze. F. violet with bronze	1.00	2.75
*	Vincentio. Purple bi-color. F. rich red purple	2.50
80.	Violacea Grandiflora. A clear all amethyst-violet30	.75
81.	Virginia Moore. Bright all yellow. The best yellow to date	1.00
83.	White Knight. Snow white, fragrant; late50
*78.	William Marshall. A fine mauve to violet Pallida	1.00
73.	Windham. Soft lavender pink50	1.25
*84.	W. J. Fryer. S. ruffled, large bright yellow. F. maroon with nar- row yellow border. Very fine	1.00
72.	Wyomissing. S. creamy white, flushed soft rose. F. pale rose pink		Oversold, buy Windham instead, much prettier.
78.	Zua. See under Group 2.		
	Zouave. S. white suffused lobelia-blue. F. white, spotted with violet	.75

IRIS SIBIRICA

The most elegant of all Irises and among the easiest to grow. The Siberian Irises have long, tall stems, grassy foliage, and are very floriferous. They are among the best for cutting or for massing by the waterside. The flowers are various shades of blue with white marking; they succeed best in moist situations.

	Each	3 for
Butterfly. Sky blue to china blue; similar to Perry's Blue.	\$0.75	\$2.00
Blue King. Medium height; rich blue-purple25	.60
Dark Blue. Medium height25	.60
Distinction. A lovely small blue flower, posed on a slender stem like a butterfly75	2.00
George Wallace. S. light blut purple; F. broad, deeper35	.90
Orientalis. Very large, rich deep purple; 3 ft.35	.90
Orientalis "Emperor". Deep violet blue. One of the best50
Orientalis "Snow Queen". Of snowy whiteness, rich yellow blotch30	.80
Superba. A dark purple25	.60
Perry's Blue. A wonderful shade of sky blue; 4 ft. The best of all	1.00

Prices quoted are for good strong divisions of blooming size and age.

JAPANESE IRIS (KAEMPFERI)

I offer the finest selected Japanese strain in mixed colors, equal to the choicest named varieties, which are very badly mixed in this country; almost every grower offers something different under the same name. I have been raising these Irises from seeds imported from the largest Iris gardens near Tokyo. You will be greatly pleased with the varieties.

Large, Blooming Size Clumps	35 cts each,	6 for \$2.00
Small Seedling Plants (either Spring or Fall delivery) only in mixed colors	75cts per doz.	
Extra Heavy Clumps by Express Collect	75 cts and 50 cts each	straight

NAMED VARIETIES

Koko-No-Iro. Royal purple, with yellow center; 6 large petals	50 cts each	
Morning Mists. (Award of Merit Royal Horticulture Society of England.) Pure white, of immense size with a faint mist of pale blue at the throat, that deepens in color and spreads as the flower reaches its zenith; texture of the flower is beautiful crapey	\$1.00 each	
Shirataki. Very tall; broad fluted white petals with a golden band in the center; a wonderful flower	50 cts each	
Yeddo Pride. Light rose center petals and dark plum outer petals	50 cts each	

NOTICE:—Out of many hundreds of choice seedlings; I have selected some dozen marveolously beautiful varieties; I am working up a stock of these now, and in another year, I will name them, and offer them for sale.

JAPANESE IRIS SEEDS

These Irises are very easily raised from seeds, and unlike the German Iris seeds, they germinate well and quickly; Fall sown seeds will give you nice plants by Spring, and some of these will bloom the following autumn; all will bloom the second year. Spring sown seeds will give you large blooming sized clumps the following year. Raising these beautiful Iris from seeds, never knowing what wonderful prizes you will draw, is a most charming and fascinating garden game; if you have never raised Japanese Iris, try it by all means.

Best Selected Seeds, Per Package	25 cts.	
--	---------	--

CALIFORNIA IRISES

There are a few American Irises, not exceeded in beauty by any members of the family, which are still practically unknown in gardens because of the difficulty which most cultivators experience in transplanting them. As a matter of fact, the following Californian species take by no means unkindly to cultivation, they are all absolutely hardy, and no Irises give a more profuse display of blooms. Hundreds of flowers are produced in a patch of plants only a yard or two square, and hardly any two seedlings are identical in colour. Their average height is 12 inches.

This Iris specie includes such varieties as **Bracteata**; **Californica**; **Douglasiana**; **Hartwegi**; **Tenax**; **Purdyi**, and their **Hybrids**. All wonderfully beautiful with their wonderful variations in flowers of yellow, with crimson veins, pinks, reds, blues, yellows, bronzes, rosy-lilac, violet shades and lavender.

No Plants For Sale; as it is very difficult to divide and transplant these Irises, and in most cases customers lose the plants, I shall discontinue sending them out, and offer **SEEDS** only, for summer delivery at **25 cts** per package.

In a mild climate sow them outside ;in cold climates, sow in a frame or cool green house; it takes the seeds until Spring to germinate. When the young plants have developed about four leaves, they should be planted out in the positions they are intended to occupy permanently. They will thrive and bloom for years. **NO LIME ON THESE!**

REGELIO-CYCLUS HYBRIDS

A new race of great beauty, as easily grown as the Germanica. The flowers of all are immense, of the most beautiful lovely colors and curious combinations imaginable, rivalling the most beautiful orchids. Plant in a warm protected, well drained sunny spot in September; in cold climates, give protection during the winter; take up in July and store in dry sand until planting time. The most important thing in growing these Irises is to give them plenty of lime.

Andromache. Lilac on white ground, veined dark violet.

Beatrix. Soft peark gray, veined dark violet.

Hecate. Upper petals soft rosy white; lower petals on a silvery ground veined brown and bronze.

Hera. A strong grower with flowers of a beautiful ruby red color, tinted bronze-blue.

Psyche. White ground, veined with violet, a superb variety.

For Delivery Only During July, August and September..... \$1.00 each

BULBOUS IRISES

Little need be said in praise of these lovely flowers—the Orchids of the hardy flower garden. Easily grown, inexpensive and flowering in July after the other Iris varieties are out of bloom.

SPANISH IRISES

My collection comprises nearly a dozen of the best named varieties; light blue, golden yellow, pure white, dark blue, bronze. These bulbs must be planted in September or October. Per dozen in best mixture.....\$0.60, per 100 \$4.00

Named varieties per doz. 75 cts, per 100 \$5.00

DUTCH IRISES

This is an entirely new race of bulbous Irises, resulting from the hybridization of the Spanish Iris and several other species. The flowers are larger and the plants more robust than in the Spanish varieties, and they have the great advantage of coming into flower a fortnight earlier; the bulbs should be planted in September or early in October; my varieties are the best which have so far been introduced. Soft blue, sky blue, deep purple, blue and yellow. Price per doz. in mixture...\$0.75, per 100 \$5.00

Named Varieties per doz. \$1.00, per 100 \$7.00

NOTICE—PLEASE READ BEFORE ORDERING

PRICES OF SINGLE RIZHOMES INCLUDE POSTAGE TO YOUR DOOR

If you order 3 or 6 of one kind, please add 5 cents additional for each root towards the postage—do not fail to do so.

Special Prices By the Dozen or Hundred of one Variety.

EXPRESS SHIPMENTS

Irises being bulbs, travel at 2nd class rate, which is not high. Of all varieties—except the newer and higher priced varieties (say from \$1.00 up) I have a large stock and I don't care how heavy the individual rizhome is as long as I don't have to pay the postage. The larger the rizhomes are, the heavier is the package and the higher the postage. There is a limit to the weight I can afford to pay postage on, or lose money. This sounds reasonable, don't it? Well, then, if you feel you can afford to pay the express on an order of say 20 or more roots, I can afford, and will send you extra large rizhomes, of all such varieties that make large roots—they don't all do it, or send you some extra bulbs.

ABOUT SIZES OF PUGET SOUND GROWN IRIS

The outstanding fact is that we can grow enormous rizhomes on the Pacific Coast—you never saw anything like it in the Middle West of East. Back there you talk about rizhomes of "finger" or "thumb" size—here nearly all varieties produce rizhomes of the size of three or four thumbs—the size of a child's wrist and larger. I have weighed rizhomes of such varieties as **Alcazar, Pallida, Ambassadeur, Gertrude, Lent A. Williamson, Ballerine** and many others that weighed almost one pound. I have to compete with such, with the small Eastern stock, priced at same prices—sometimes lower priced than mine. Unfortunately the majority of people buy everything by the price—they don't remember—

IT ISN'T WHAT YOU PAY—IT'S WHAT YOU GET FOR WHAT YOU PAY THAT COUNTS!

Now remember, in buying my No. 1 size, you get as big roots, as it is possible to get from any source; in fact, as a customer write me the other day, they are **just a little better and bigger** than the other fellow's and the prices are just the same, in most cases lower.

I shall discontinue sending out the No. 2 size rizhomes.

O. M. PUDOR, Iris & Delphinium Specialist,
Puyallup, Washington, U. S. A.

OVER TWO THOUSAND SATISFIED CUSTOMERS, MANY HUNDREDS LIVING
AS FAR AS 3000 MILES AWAY, TESTIFY IN GLOWING TERMS THAT
PUDOR'S PUGET SOUND GROWN IRIS DO EXCEL!
IS IT OUR WONDERFUL CLIMATE? IS IT OUR RICH ALUVIAL SOIL? IS IT THE
LOVE AND CARE I GIVE MY PLANTS? IS IT THE APPLICATION
OF THE "GOLDEN RULE?"
PROBABLY IT IS A COMBINATION OF THEM ALL

**READ THESE UNSOLICITED TESTIMONIALS, AND THEN GIVE ME A TRIAL
ORDER—I WON'T DISAPPOINT YOU!**

Here is One From Elkhart, Ind.:

The Iris plants you shipped to me on July 8th arrived July 12th, and were in as good condition as though they had come less than one hundred miles instead of coming two thousand miles. The divisions were very thrifty and large.

This One From Traverse City, Mich.:

Japanese Iris arrived Tuesday; was astonished by the thrifty plants which were advertised as seedlings; they were packed splendidly and came 2500 miles in finest condition.

Way Down In Richmond, Va., Says:

The Iris was received in splendid condition a few days ago and I must tell you that it is the finest ever bought, and cheaper than I can get it around this part of the country. You may expect a large order from me next year.

Miss Banta, of Darien, Conn., Writes:

The Iris received in good condition and I was very much pleased with them. One would never have guessed to see them that they had taken such a long trip and they were fine big roots.

Hotel Tuller, at Detroit, Mich.:

Shipment of Iris roots received July 22 came through in fine shape, and they are all large size roots, and several extras. You must have some climate to grow roots the size you ship. Thanking you for the manner you have filled my orders for the past two years; last year was good; this year was even better.

Mrs. Stillians, at Villisca, Iowa, Kindly Writes:

Iris received and was delighted with great big, healthy roots; very different from those I received from the East.

A Card From Ardmore Ave., Winston-Salem, N. C., says:

The Iris roots reached me in good condition; I was surprised that you could ship so far and still keep them fresh. I also was pleased with the size of the roots, and thank you so much for filling my order so nicely.

Longansport, Indiana, 1400 George St.:

I received the Iris rhizomes last Wednesday and will say that they were excellent specimens and came thru in fine condition. They looked as fresh as some I got here in our own state and were larger bulbs. I thank you for the prompt and careful shipment.

Under Date of August 23, Mrs. Sweeney of Gonzales, Texas, Writes:

My Iris ordered from you arrived in excellent condition. I have never received such rhizomes; they are by far the largest and best.

Mrs. Soden of Emporia, Kansas, Says:

The Iris came and are planted; they are the finest I ever received from any source, and I have bought from many other growers.

Mrs. Theisinger of Brooklyn, N. Y., Saw My Display at the Brooklyn Botanical Gardens:

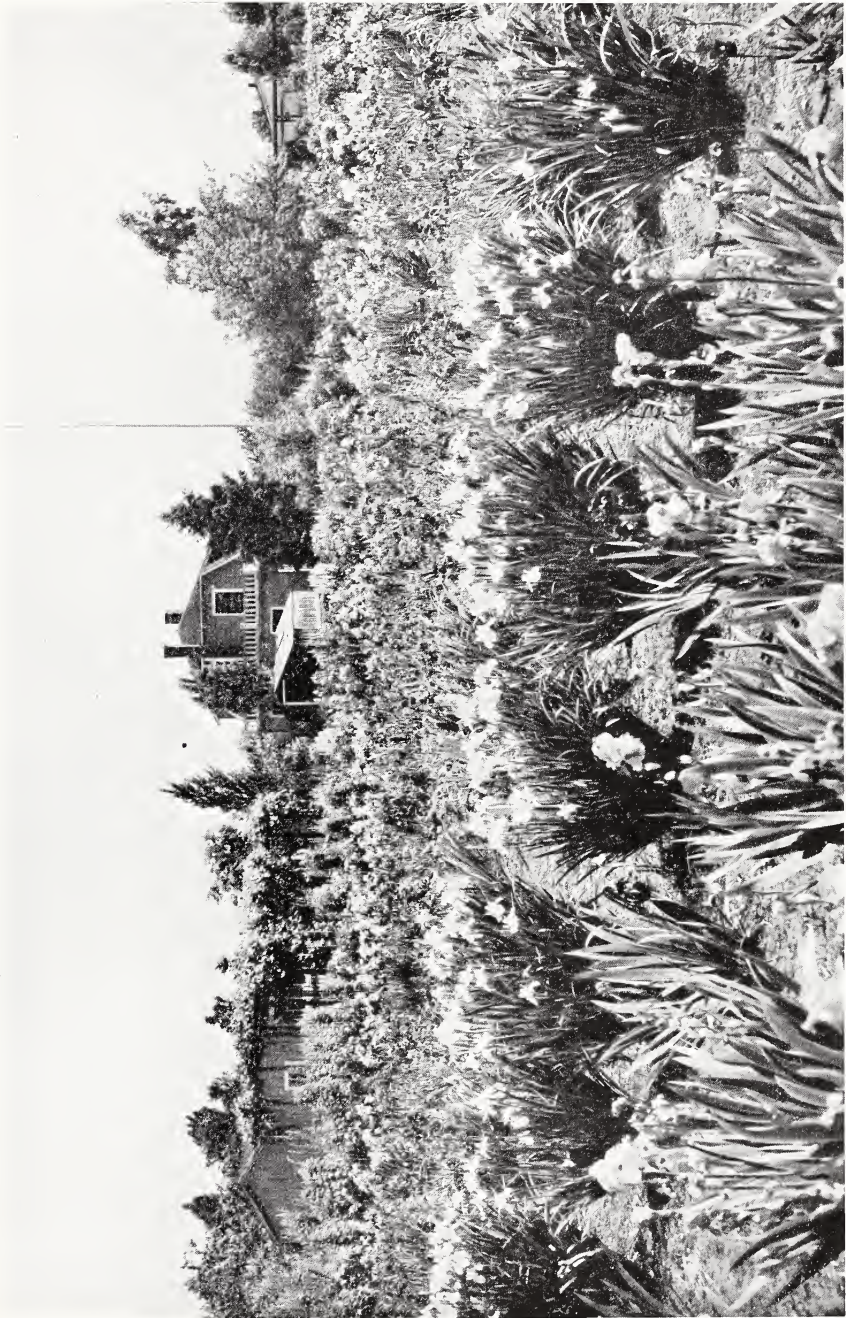
Received the Iris roots and in splendid condition. If I had received half as many roots, I should have been pleased, but all had two healthy roots and some of the expensive ones three.

If you had seen your "Lord of June" in our Botanical Garden this Spring you would get another photograph for your catalog. The flowers were so large none of the stem was visible.

It's a Long Way to Providence, R. I., But Read What Mr. Armstrong of that City Writes to Me on September 17th, 1924:

The order of Iris arrived safely, and in fine condition. It would be nearer correct to call them "Clumps" instead of plants. Many of them could have been divided into two and some into three. Those I bought of you in other years were **grand** this summer, **and all true to name**, which is an important point on which many dealers are careless. Thank you for your generosity as to size and count.

**THE ABOVE ARE ONLY A FEW OF THE MANY HUNDREDS OF TESTIMONIALS
I RECEIVE TWICE A YEAR. THERE'S A REASON!**



A Glimpse of my Iris Gardens in June



**A FINE SPECIMEN PLANT OF PUDOR'S "GLORY OF PUGET SOUND"
HARDY DELPHINIUM STRAIN**

Have you a copy of my Hardy Plant and Seed Catalog? It's free.