

LIBRARY  
RECEIVED  
☆ MAR 23 1936 ☆  
U. S. Department of Agriculture.



Nasturtium  
Glorious Gleam  
Hybrids  
Double  
Sweet Scented

Rock's

1936

GARDEN  
BOOK

KANSAS CITY . . . . . MISSOURI

# COLLECTION OF NEW NOVELTIES

## No. 52

3540 Nasturtium, Glorious Gleam Hybrids. Pkt., 25c.

5195 Marigold, Guinea Gold. Pkt., 25c.

5878 Zinnia, Fantasy Mixed. Pkt., 25c.

One packet each of the above, regular price, 75c; special, 55c.

### SPECIAL

### OFFER

### No. 52

1 Pkt. Each of  
These Three  
Charming Novelties  
for

## 55c

## COLLECTION

### No. 62

1 Pkt. Each of  
These Six  
Charming Annual  
Flowers for

## 55c

## COLLECTION OF POPULAR

### ANNUALS No. 62

650 Aster, Early American Beauty, Mixed. Pkt., 15c.

390 Snapdragon, Maximum Tall Mixed. Pkt., 15c.

2880 Larkspur, Tall Double Mixed. Pkt., 10c.

5250 Verbena, Mammoth Mixed. Pkt. 15c.

3935 Petunia, Single Bedding Mixed. Pkt., 10c.

5848 Zinnia, California Giant Mixed. Pkt., 15c.

One packet each of the above: Regular price, 80c; special, 55c.

## ROCK'S SUPERB GLADIOLI

This group contains standard and new introductions of proven merit. After the bulbs are planted keep the beds clear of weeds. The main planting of Gladiolus bulbs should be made the latter part of April, with additional plantings every three weeks until July 1, to secure a succession of blooms until frost. Plant bulbs about 6 inches deep (to bottom of bulb) and six inches apart each way.

We supply only No. 1 Grade Bulbs, the largest size.

Betty Nuthall. Coral Pink. 10c each; 60c per doz.; \$4.00 per 100.

E. J. Shaylor. Ruffled pink. 10c each; 60c per doz.; \$4.00 per 100.

Flaming Sword. Brilliant red. 8c each; 60c per doz.; 4.00 per 100.

Giant Nymph. Light pink. 10c each; 60c per doz.; \$4.00 per 100.

Golden Eagle (New). Rich yellow. 10c each; 80c per doz.; \$5.00 per 100.

Halley. Salmon-pink. 7c each; 50c per doz.; \$3.50 per 100.

Herada. Glistening mauve. 8c each; 60c per doz.; \$4.00 per 100.

J. C. Brugger. Rosy pink. 10c each; 60c per doz.; \$4.00 per 100.

Joe Coleman. Rich red, ruffled. 8c each; 60c per doz.; \$4.00 per 100.

Le Marechal Foch. Soft pink. Early. 7c each; 50c per doz.; \$3.50 per 100.

Los Angeles. Shrimp-pink. 7c each; 50c per doz.; \$3.50 per 100.

Mrs. Francis King. Scarlet flame. 7c each; 50c per doz.; \$3.50 per 100.

Mrs. Frank Pendleton. Light pink. Red throat. 7c each; 50c per doz.; \$3.50 per 100.

Nancy Hanks (New). Apricot. 10c each; 80c per doz.; \$5.00 per 100.

Panama. Rose-pink. 8c each; 60c per doz.; \$4.00 per 100.

Peace. Large white. 7c each; 50c per doz.; \$3.50 per 100.

W. H. Phipps. Begonia pink. 10c each; 60c per doz.; \$4.00 per 100.

Rock's Rainbow Mixture. A beautiful mixture of named varieties. 10c per doz.; \$5.00 per 100; \$25.00 per 1000.





# Flower Seed Novelties 1936

## NEW YELLOW ASTER

**395 Golden Sheaf.** Deepest yellow Aster yet produced. Crest-like center with several rows of petals around edge, of branching habit and last well when cut. Pkt., 25c.

## NEW ASTERS

**Wilt Resistant.** Just as the medical profession has eliminated certain fatal diseases of human life, so has the horticultural world taken big strides toward overcoming the ravages of the Aster Wilt. This common disease among Asters has caused many an admirer of this lovely flower to avoid planting them in their garden, but now we have a new strain tried and proven to be immune even when grown in the sickest soils. They not only form strong plants, but better forms with larger flowers and better substance than the old or ordinary strains of the respective types.

**Early American Beauty (Wilt Resistant).** A very large, ball-shaped sort growing 2 to 3 feet in height. Long stems, fine for cutting. Our finest all purpose Aster.

553 Crimson  
557 Lavender

563 White  
566 Mixed

Any of the above, pkt., 25c; 3 pkts., 60c.

**Improved Crego (Wilt Resistant).** Enormous flowers with long, loose, twisted petals. Vigorous grower and an early bloomer. Height, 2 feet.

570 Crimson  
573 Deep Rose  
581 Shell-Pink

586 Violet  
589 White  
593 Mixed

Any of the above, pkt., 25c; 3 pkts., 60c.

**390 Giant California Sunshine Mixed.** We believe this is one of the finest novelties we have ever had. The flowers are huge in size, often measuring 5 inches in diameter, on long stiff stems, and are borne on sturdy, erect plants, growing about 3 feet high. The color is startlingly beautiful. A dual-tone effect is obtained through the contrasting tints of the tubular petals in the center and the outer or guard petals which creates a charming, airy, lace-like effect. The colors vary through lovely shades of pink, blue and lavender, with the disc sometimes light yellow and sometimes blue. Do not confuse this with the old California Sunshine Aster for it is a distinct improvement and don't fail to include it in your garden this year as you will not find a more striking flower in the garden nor a lovelier one for cutting. Pkt., 25c; 3 pkts., 60c.

**Imbricated Pompom.** A very popular variety for cut flowers. It is a fine early flowering variety, growing about 14 inches. The flowers are of medium size and are composed of graceful over-lapping petals.

674 Crimson  
676 Fiery Scarlet  
679 Light Blue  
683 Rose

684 Violet  
686 White  
689 Mixed Colors

Any of the above. Pkt., 25c; 3 pkts., 60c.

## BUSH BALSAM

**1095 Mixed Colors.** A new showy type of Balsam of bushy growth with flowers that appear in clusters on top of the stems instead of being hidden on the side of the stems and under the foliage. The flowers are double, very freely produced in shades of red, white and rose. It is an excellent bedding subject. 1½ ft. Pkt., 25c.

## CANTERBURY BELLS

**1398 New Annual Mixed.** Flowers from seed in less than six months, so it is now possible to have these in bloom the first season from early sowings. The plants grow from 2 to 2½ feet high and bear 6 to 8 spikes each, covered with many bell-shaped flowers. While we are able to supply only mixed colors this year, these include the complete list of shades common to the biennials. Pkt., 25c.

## NEW CALENDULA

**1298 Chrysantha or Sunshine.** Large clear yellow, petals loosely arranged similar to the chrysanthemum. Long-stemmed blooms and excellent for cutting. Pkt., 25c.

## NEW COSMOS

**1932 Early Klondyke Orange Flare.** A real glowing orange shade and good for cutting. Plants grow about 4 feet and are very showy and will bloom before frost. Pkt., 25c.

## NEW AFRICAN DAISY

**525 Arctotis Hybrids.** Those dry, sun-baked, windburnt spots of the garden will welcome this striking little annual. Being a native of South Africa, it will thrive in the hottest and driest positions. The showy daisy-like flowers are from 2½ to 3 inches across and come in a variety of colors: Orange, terra cotta, red, yellow, carmine and coppery rose. It grows 8 to 10 inches in height, making an excellent border plant. Pkt., 25c; 3 pkts., 60c.

## NEW GAILLARDIA

**2185 Indian Chief.** Large bronzy red annual Gaillardia. Blooms from early summer until frost. Very showy and good for cutting. Plants are bushy, growing about one foot high. Pkt., 15c.

## HUNNEMANNIA

**2637 Semi-Double Sunlite.** This is an attractive semi-double form of the yellow tulip poppy. The extra petals are on the outside instead of the inside of the cup. The plants grow about 2 feet and thrive best in a sunny, well drained position. Pkt., 25c.

## NEW ANNUAL LUPINES

**3120 Hartwegi Giants Mixed.** A new improved strain of Annual Lupines. Hartwegi Giants are from 3 to 4 feet tall or 1 to 1¼ feet taller than the old *Lupinus Hartwegi* type. Hartwegi Giants have the base branching habit, with four to six long spikes to a plant. Each spike has from twenty-five to fifty more blooms and the blooms are also a little larger. The leaves are about one and one-half times as large, making a very handsome plant. Colors include dark blue, sky-blue, rose and white. Pkt., 35c; 3 pkts., 90c.

## NEW MARIGOLDS

**3193 Dixie Sunshine.** Golden yellow chrysanthemum flowered type. Tall, bushy plants, blooming from August until frost. Very unusual. Pkt., 25c.

**3198 Yellow Supreme.** Carnation flowered and similar to the Guinea Gold except the color is of a creamy lemon yellow. Flowers borne on long stems and are excellent for cut flowers or for bedding. Pkt., 25c.

**3195 Guinea Gold.** Distinct type of Marigold. Semi-double in form with the individual petals gracefully set. Blooms are a beautiful orange flushed with gold. The plants are of graceful pyramidal habit growing from 2 to 2½ feet high and generally supply from 30 to 40 flowers which are 2 to 2½ inches across. The characteristic Marigold odor too is much less pungent than in other sorts. Pkt., 25c; 3 pkts., 60c.

**3150 Giant African All-Double Lemon.** A fine companion to the All-Double Orange variety that was introduced in 1931. This fine Marigold produces practically 100% true double flowers and is of the same type as the popular Orange Prince and Lemon Queen. Possibly not quite so large as these but produced in more profusion. They grow from 3 to 3½ feet high and the color is true lemon-yellow. This type makes an exceptional sort for cutting, often lasting ten days in water. Pkt., 16c; 3 pkts., 40c.

**3155 Giant African All-Double Orange.** Very brilliant orange with the same habit and type as the above. Pkt., 15c; 3 pkts., 40c.

**3158 Giant African All-Double Mixed.** A mixture of the above two colors. Pkt., 15c; 3 pkts., 40c.

## NEW FRENCH MARIGOLD

**3212 Harmony.** Center is bright golden-yellow, outer petals dark maroon red. Plants are bushy, growing about one foot. Excellent for cutting or bedding. Pkt., 35c.



# Flower Seed Novelties 1936

## NEW PINK MORNING GLORY

**2675 Ipomoea, Rose Marie.** A new double and semi-double flowering type. It has large flowers of a deep rose-pink shade. We believe this fine climber will rival our famous Baby Blue. Pkt., 25c; 3 pkts., 60c.

## NEW NASTURTIUMS

**3525 Double Golden Gleam Sweet Scented**—Bright golden yellow. The plant forms a vigorous large bush which throws out short runners averaging about 18 inches. The large flowers appear when the plant nears complete development and when in full bloom the entire plant, including the runners, is a blaze of color. They are produced on stiff, erect stems about 6 inches long and a cut bouquet when allowed to remain in a room for a short time will fill the room with a delightful fragrance. We heartily recommend this novelty to everyone. Pkt., 15c; 1 oz., 25c.

**3530 Double Scarlet Gleam.** Dazzling scarlet. Pkt., 25c.

**3540 Double Gleam Hybrids.** Various colors. Pkt., 25c.

**3418 Golden Globe.** Uniformly dwarf and compact, free flowering and double golden yellow and sweet scented. Pkt., 25c.

## NEW PETUNIAS

**3900 Pink Gem.** Miniature Petunia. Forms a neat compact plant five to six inches high, eight inches in diameter, will carry as many as twenty-five to thirty blooms in flower at one time. Indispensable for borders, window boxes, pots, rock gardens and for bedding. Pkt., 25c.

**3898 Martha Washington.** Dwarf single ruffled Petunia, growing about nine inches. Blush pink shading to wine red and dark violet in throat. Pkt., 50c.

**3892 Flaming Velvet.** Color a rich, deep velvety crimson. Won Gold Medal award, 1936. Supply of seed limited. Pkt., 25c.

## NEW POPPY

**7510 Nudicaule (Iceland) El Monte.** A new perennial Poppy that is extremely easy to grow from seed. It is a selection from some choice Australian Hybrids and much larger than other varieties in this class. The flowers are a deep tangerine-orange and are borne on long wiry stems making it fine for cutting. Seed sown indoors in March will produce flowers the first season. Pkt., 25c.

## SNAPDRAGON

**444 Dwarf Rock Hybrids Mixed.** (New). Those interested in Rock Gardens will find this unique dwarf type indispensable in their rockery. They form very small, compact plants and produce a wealth of blooms varying through delightful shades of rose, pink, mauve, purple, and many bicolors. They will bear flowers earlier and over a longer period of time than most sorts. Pkt., 25c; 3 pkts., 60c.

## TITHONIA

(Mexican Sunflower)

**5235 Speciosa.** A very unusual plant from Mexico, and one of the finest annuals for screen planting. The plant attains a height of 8 to 10 feet, with heavy stems and foliage giving somewhat of a tropical effect. The flowers are similar to a large single African Marigold or Single Dahlia and are of a dazzling orange-scarlet color. It blooms from July to frost and is especially valuable for planting in shrubby borders or as a background border. Pkt., 25c; 3 pkts., 60c.

## RUST-PROOF SNAPDRAGONS

**400 University of California Mixture.** This variety of Snapdragon is immune to rust. Seeds germinate better and flowering season is much longer. Pkt., 25c; 3 pkts., 60c.

## VENIDIUM

**5180 Fastuosum.** From far-off South Africa comes this charming new annual and by reason of the recently returned popularity for daisy-like flowers, this lovely plant should prove most valuable. It grows from 2 to 3 feet high with large, daisy-shaped flowers 3 inches across and of the most brilliant orange with shiny black center and black-purple zone. Given the Royal Horticultural Society's Award of Merit, which is sufficient recommendation for any flower. Pkt., 25c.

## NEW VERBENAS

**5188 Beauty of Oxford Hybrids.** A beautiful giant hybrid raised from a cross between Verbena Luminosa and Beauty Oxford. While following closely the color of Beauty of Oxford, it also inherits a touch of salmon-pink from Luminosa, which gives a lovely softening effect to the sometimes harsh colorings of Beauty of Oxford. The color shades from clear rose-pink to rose-red, making this the brightest rose Verbena ever produced from seed. The individual florets measure over one inch in diameter. They are half as large again as Beauty of Oxford and the foliage is dark cress-green. Pkt., 25c.

**5239 Hybrida Grandflora Spectrum Red.** As its name implies, this magnificent Verbena is an intense bright red, brighter than any other Verbena yet introduced. It is classified between spectrum red and scarlet red. Having absolutely no eye, the color is intensified, and its brilliance is quite dazzling. It is much brighter and larger than Lucifer and is comparable only to Etna, but without Etna's yellow eye. Individual florets are one and one-fourth inches in diameter. Pkt., 25c.

## NEW ZINNIAS

**5878 Fantasy Mixed.** This new mixture will be a welcome addition to the garden. The flowers are borne on long slender stems and the flowers are well rounded but of the shaggy type. A varied range of colors in all the Zinnia shades. Pkt., 25c.

**5875 Mexicana Hybrida Mixed.** Not a brand new novelty, but a worthy small-flowering type that should be better known. It is a small-flowering sort, about the size of an average daisy and growing 16 inches high with single, semi-double and double flowers. In it are found the most pleasing color variations, quite similar to those found in the Marigold, Gaillardias and Chrysanthemums. They make delightful cut flowers, lasting two weeks in water. Pkt., 15c.

**5884 Scabiosa-Flowered Mixed.** A new and distinct type of Zinnia that is entirely different from all other classes. The plant reaches a height of about 3 feet, and is very abundant flowering. Its outstanding value is in the unusual form of the flower which consists of an outer ring of long petals, whereas the center shows many small petals closely placed. The flower at first sight has a great likeness to the popular Scabiosa or Mourning Bride. A fine novelty. Pkt., 25c.

**5892 Desert Gold.** Large double flowers, well formed, dual color of light and deeper hues of golden yellow. Height 2½ to 3 feet. Pkt., 25c.

## CALENDULA

**1291 Orange Shaggy.** One of the best orange varieties. Petals are long and deeply fringed and very double. Deep orange shading to lighter orange in center. Has long stems, growing about 18 inches. Pkt., 15c.

ROCK'S SEEDS ARE GIVEN STRICT GERMINATION TESTS BEFORE BEING PACKETED—SO YOU ARE ALWAYS ASSURED OF THE BEST THAT GROWS.



# Rock's Annual Flower Seeds

**Directions for Growing Annual Flowers.** The seedbed must be thoroughly spaded or plowed; it is best to turn under the top-soil of the previous year. A light application of well-rotted manure, turned under in plowing, will prove very beneficial. Pulverize with a rake or harrow, removing all clods, stones, etc.

Most Annuals should be planted from April 15th to May 15th, providing the weather permits; for early flowering, some may be started inside in early March and transplanted to the open the latter part of April.

In sowing the seed be sure you do not cover deeper than 4 times the thickness of the seed. Water lightly; this should be done with a sprinkling can or very fine spray in order that the seed may not be washed out. The seedbed should be watered at least once a day. Do not allow the ground to become hard and dry. When plants are well started a thorough watering once every two days should be sufficient. Cultivate with a hoe regularly in order that the soil about the plants will not become packed.

## ABRONIA

**110 Umbrellata Grandiflora** (Sand Verbena). A handsome trailing plant, with clusters of sweet-scented flowers resembling Verbenas in shape, but of smaller size; color rose, with white eye. Admirably adapted for rockwork. Will thrive well in dry poor soils and in exceedingly sunny situations. Height, 6 inches. Pkt., 10c.

## ADONIS (Pheasant's-eye)

**135 Aestivalis.** A pleasing annual, growing about 12 inches high, with feathery fernlike foliage. Flower of a beautiful dark scarlet, measuring up to 3 inches in diameter. Most excellent for cutting, as the flowers last nearly two weeks in water. Sow seed in April or early May where plants are to remain. Will thrive in semi-shade. Pkt., 15c; 3 pkts., 35c.

## AGERATUM (Floss Flower)

Very easily raised from seed, which may be started in a hotbed and transferred to the open ground in May, or sown outdoors in May.

**145 Blue Ball.** A lovely new dwarf blue type. The plants are compact, growing only 6 inches high. Delightful for ribbon borders. Pkt., 15c.

**147 Blue Cap.** (New.) The flowers are unusually large and of a rich bright blue color. The plants very compact, growing but 5 inches high. Ideal for edgings to flower borders. Pkt., 20c; 3 pkts., 50c.

**150 Blue Perfection.** Plants uniform in height; flowers large; deep amethyst-blue. Height, 15 inches. Pkt., 10c; ¼ oz., 40c.

**160 Imperial Dwarf Blue.** Produces a multitude of lavender-blue flowers. Height, 6 inches. Pkt., 10c; ¼ oz., 35c.

**165 Imperial Dwarf, White.** Similar to Imperial Blue, except flowers are of pure snow-white, the best of the white varieties. Height, 6 inches. Pkt., 10c; ¼ oz., 40c.

**175 Little Blue Star.** A miniature type growing but 6 inches high and covered with light blue flowers. Pkt., 25c; 3 pkts., 60c.

## ACROCLINIUM (Everlasting)

**125 Double Mixed.** This beautiful Daisy-like flower somewhat resembles the Strawflower. It is largely used for winter bouquets, for which purpose the flowers should be cut before they are fully expanded. Height, 15 inches. Seed sown in early May will flower six weeks later. Pkt., 10c; 3 pkts., 25c.

# ROCK'S ANTIRRHINUM

## (Snapdragon)

Snapdragons, as you probably know, are superb for both cut flowers and bedding effects, as they bloom the entire summer. For early flowers sow seed indoors or in a cold-frame in March, transplanting when the weather is warm. For July flowers sow in open ground early in May. Seed is very fine, so care should be taken to sow not more than ½-inch deep, keeping seedbed moist at all times.

**444 Dwarf Rock Hybrids Mixed** (New). See Novelties.

## MAXIMUM GIANT SNAPDRAGONS

An amazing new size! These are the real exhibition sorts for your Amateur Flower Shows. This new class embodies the last word in Snapdragons of today, immense in size, gorgeous in color, and stately in effect. They grow from 30 to 35 inches high, with flowers closely set on the stems. These new creations are a decided improvement over the old giant types and are the finest class of Snapdragons for cut flowers.

305 Apple Blossom. Rose-pink, yellow lrp.....	Pkt. \$0.15
310 Canary Bird. Canary-yellow, golden center.....	.15
315 Defiance. Brilliant scarlet, white tube.....	.15
320 Gotelind. Light copper, old-rose throat.....	.15
325 Copper King. Rich velvety copper.....	.15
335 Nymph. Rosy lilac, white tube.....	.15
340 Old Gold. Bright yellow, flushed salmon and gold.....	.15
350 Purple King. Glowing purple garnet.....	.15
360 The Rose. Lively rose-pink.....	.15
363 Salmon Rose. (New.) A beautiful salmon shaded rose-pink.....	.25
380 White Rock. The best white. Our own introduction.....	.15
385 Collection. One packet each of the above eleven varieties, \$1.25.	
390 Rock's Special Mixed. Pkt., 15c; 3 pkts., 35c.	

## MAJESTIC SNAPDRAGONS

### (Half Dwarf Sorts)

A gorgeous new English strain of Snapdragons producing giant spikes of densely set flowers quite similar to the Maximum type in size but of more dwarf compact growth (18 to 20 inches). These two characteristics afford a superb type for bedding as well as cutting flowers.

492 Avalanche. Pure white. Pkt., 25c.	
495 Eldorado. Deep golden yellow. Pkt., 20c.	
498 Golden Dawn. Golden buff overlaid salmon. Pkt., 20c.	
503 Red Chief. A rich deep scarlet. Pkt., 20c.	
506 Rose Beauty. Clear rose-pink. Pkt., 25c.	
508 Rose Marie. Light salmon-rose with golden center. Pkt., 25c.	
511 Twilight. Delicate apricot with old gold center and salmon shading. Pkt., 20c.	
515 Rock's Select Mixed. Pkt., 20c; 3 pkts., 50c.	

## ALYSSUM

A fragrant hardy annual, bearing spikes of small white flowers in great profusion throughout the summer and autumn. Used for borders or early bedding flowers. Sow the seed early in spring.

200 Benthani Maritimum (Sweet Alyssum). 9 inches high, very fragrant. Pure snow-white. Pkt., 10c; ½-oz. 25c; oz. 40c.	
205 Lilac Queen. A new and distinct variety of a beautiful lilac-white. Dwarf, compact and very fragrant. 5 to 6 inches high. Pkt., 10c; ¼ oz., 25c.	
210 Little Gem. 4 inches high; the best for borders or rockwork. Pure white. Pkt., 10c; ¼ oz., 25c; oz., 75c.	

## AMARANTHUS

Grown especially for their brilliant foliage. They thrive in hot, sunny locations. Are useful for tall border plants or for the center of large beds. Sow seed in early May.

230 Caudatus (Love-Lies-Bleeding). Long drooping crimson flower spikes. Plants grow three to four feet high. Pkt., 10c; 3 pkts., 25c.	
235 Salicifolius (Fountain Plant). This variety never fails to attract attention. The long variegated red and yellow foliage makes it very useful for tall bedding or as a background. Height, 3 feet. Pkt., 15c; 3 pkts., 35c.	
240 Tricolor (Joseph's Coat). The inner foliage is deep bronze, tipped with green, while the outer foliage is bright scarlet and gold. Height, 2½ feet. Pkt., 10c; 3 pkts., 25c.	

## ANCHUSA (Summer Forget-me-not)

**275 Blue Bird.** A beautiful new upright and compact-growing Anchusa growing about 18 inches high and bearing its flowers in a luxuriant bouquet at the top of the plant. The flowers are vivid indigo-blue. A new and distinct color in this family. The familiar shaggy habit of the old type has been entirely eliminated. Pkt., 15c.

**280 Capensis.** A very attractive and popular annual. Flowers similar to giant Forget-me-nots, color bright blue with small white center, borne on slender stems, 18 inches long. Blooms throughout the summer. Fine for cutting. Pkt., 10c; 3 pkts., 25c.

## ARCTOTIS (African Daisy)

**520 Grandis.** Large white, daisy-like flower, with delicate mauve tint on underside of petals. Splendid for cutting, as the blooms last from a week to 10 days in water. Sow seed in early May for July flowers. Height, 2 feet. Pkt., 10c; 3 pkts., 25c.

## ARGEMONE (Prickly Poppy)

**540 Grandiflora Alba.** Has large white poppy-like flowers, 3 inches in diameter, with grayish green, thistle-like foliage. Blooms from July to November. Do not transplant unless absolutely necessary. Sow seed as soon as ground has become warm. Height, 2 feet. Pkt., 15c; 3 pkts., 35c.



# ROCK'S SUPERB ASTERS

## EARLY AMERICAN BEAUTY ASTERS

This lovely new class has overcome the only objectionable feature of the old American Beauty type, and that was its late blooming habit. In this new variety we have all of the fine old qualities and habits together with an earlier blooming period. This new sort grows from two to three feet high, is of branching habit and commences to bloom in August. The flowers are very large and are borne on extremely long stems.

- 602 Azure Fairy. Azure blue.  
 608 Carmine-Rose. Deep rose-pink.  
 610 Crimson. Brilliant crimson.  
 620 Peach Blossom. Flesh pink, shaded deeper in center.  
 625 Purple. Bright royal purple.  
 630 Rose. Bright rose-pink.  
 640 White. Pure white.

Any of the above, pkt., 15c; 3 pkts., 40c.

645 Collection. One packet each of the above seven colors, 85c.

650 Rock's Finest Mixed. Pkt., 15c; 3 pkts., 35c.

## ROCK'S CALIFORNIA GIANT ASTERS

It is a cross between the famous Beauty type and the ever popular Crego, possessing a sturdy habit of growth and a graceful appearance. Excellent long stemmed flowers for cuttings. Height, 2 to 3 feet.

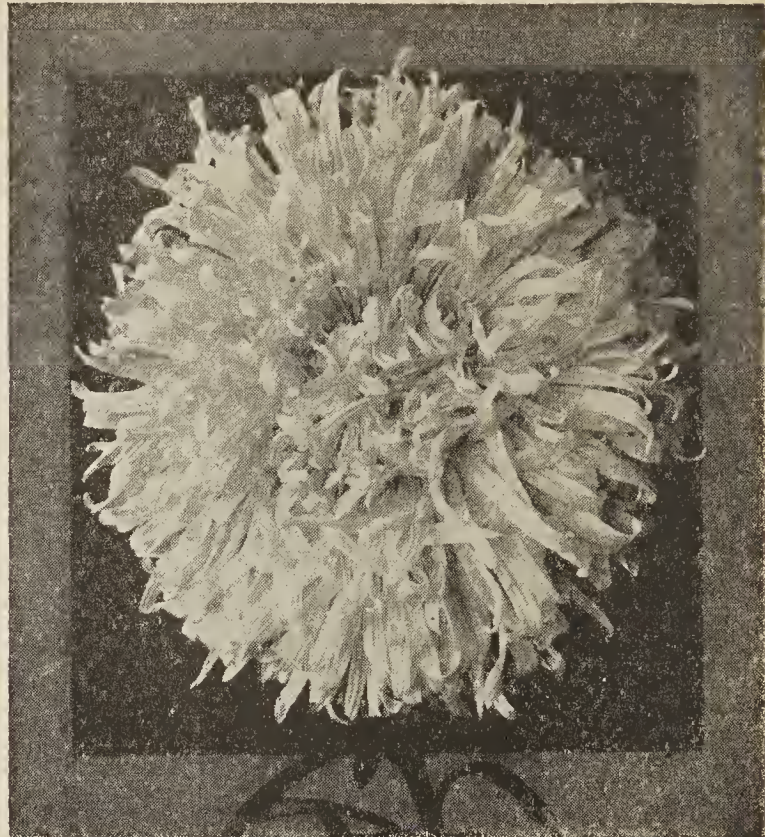
- 705 Dark Purple. Rich glowing purple.  
 710 Deep Rose. A most pleasing shade.  
 715 Light Blue. Lovely delicate blue.  
 725 Peach Blossom. White, changing to pink.  
 735 White. Large, very fine.

Any of the above, pkt., 20c; 3 pkts., 50c.

740 Collection. One packet each of the above five colors, 75c.

750 Rock's Select Mixed. Pkt., 20c; 3 pkts., 45c.

LOVERS OF ASTERS WILL WELCOME THE  
NEW WILT-RESISTANT STRAINS.  
SEE NOVELTY SECTION, PAGES 1 AND 2.



ASTER

## EARLY WONDER ASTERS

The earliest Asters to bloom. Large, double flowers, borne on strong stems. 15 to 18 inches long.

- 950 Carmine-Rose                      960 Light Blue  
 965 Rose                                955 Dark Blue  
 970 White                                980 Mixed Colors

Each of the above colors, pkt., 20c; 3 pkts., 50c.

975 Collection. 1 pkt. each of above 5 colors, 75c.

## NEW ASTER

890 Giant California Sunshine Mixed. See Novelty page. Pkt., 25c; 3 pkts., 60c.

## IMPROVED CREGO ASTERS

Extra large flowers, with long, loose twisted petals. The plants are vigorous growers and free bloomers, coming into flower early in September. Height, about 2 feet.

- 790 White                                775 Pink  
 765 Crimson                            780 Purple  
 785 Rose                                 770 Lavender  
 800 Mixed Colors

Each of the above colors, pkt., 10c; 3 pkts., 25c.

795 Collection. 1 pkt. each of above 6 colors, 45c.

## ROCK'S IMPROVED BRANCHING ASTERS

A robust branching type, from 2½ to 3 feet high. Flowers large and double and the most valuable for both cutting or general garden effects. Blooms September and October.

- 900 Azure Blue                         905 Crimson  
 920 Perfection White                915 Peerless Pink  
 930 Silvery Rose                       925 Purple  
 935 Sensation Red                    940 Mixed Colors

Each of the above colors, pkt., 10c; 3 pkts., 25c.

939 Collection. 1 pkt. each of above 7 varieties, 55c.

## NEW CALIFORNIA SINGLE ASTERS

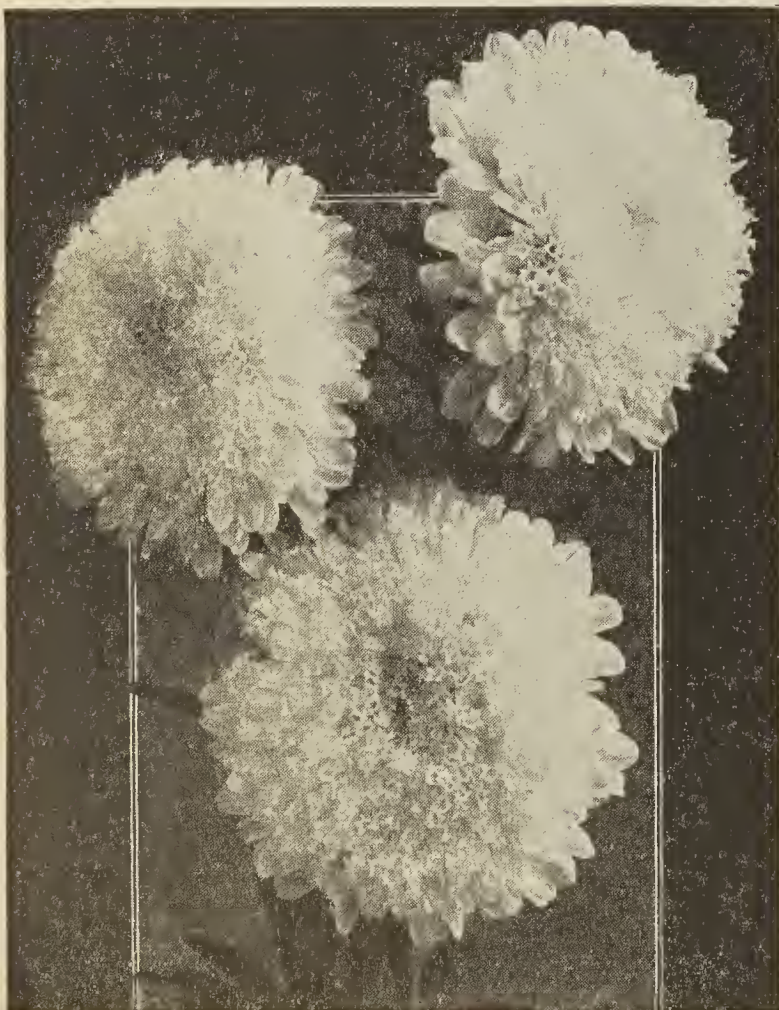
The flowers are large, measuring three to four inches across with stems 18 to 24 inches long. The petals are slightly twisted, which adds a plquant touch to its beauty.

- 829 Light Blue                         845 White  
 835 Purple                               850 Mixed  
 840 Rose

Each of the above, pkt., 15c; 3 pkts., 35c.

849 Collection. 1 pkt. each of above 4 colors, 45c.

Don't Miss the New  
WILT RESISTANT ASTERS



NEW IMBRICATED POMPON ASTER



**BLUE LACE FLOWER**

(Didiscus Caeruleus)

1200 Often called Queen Anne's Blue Lace. A most beautiful flower for your garden, resembling the flower of the wild carrot in form but of a beautiful delicate azure blue. Excellent for cutting, but old flowers should be cut off as they tend to stunt both blooms and plant. Sow seed either in hotbed in March or open ground in late April. Pkt., 15c; 3 pkts., 35c.

**BRACHYCOME (Swan River Daisy)**

*Iberidifolia*. A charming annual growing about 12 inches high, covered with small Daisy-like flowers. Suitable for small beds, edging or pot culture. Seed may be sown either in frame in March or outside the latter part of April.

1208 Blue      1212 White      1210 Pink      1214 Mixed  
Pkt., 10c; 3 pkts., 25c.

**BROWALLIA (Amethyst)**

One of our favorite profuse-blooming bedding plants, covered with rich, beautiful winged flowers during the summer and autumn months; grows freely in any rich soil; blooms nicely in the winter if the plants are lifted in autumn and cut back. Height, 18 inches.

1226 Elata Blue. Sky Blue. Pkt., 10c.

**BALLOON VINE (Love-in-a-Puff)**

1090 A very pretty, rapid-growing annual climber with white blossoms and light green balloon-shaped fruits. Excellent for covering walls, stumps or unsightly places. Soak the seed a few hours in warm water before planting. Sow outdoors in May. Height, 12 feet. Pkt., 10c; 3 pkts., 25c.

**BALSAM (Lady's Slipper)**

**DOUBLE CAMELIA FLOWERED.** Seed is best sown indoors in April and transplanted to the open in May. Height, 2 to 3 ft.

- 1100 Light Pink. Pkt., 10c.  
1105 Salmon Rose. Pkt., 10c.  
1115 White Perfection. Pkt., 10c.  
1110 Scarlet. Pkt., 10c.  
1125 Mixed Colors. Pkt., 10c; 3 pkts., 25c.  
1120 Collection. 1 each of the above 4 colors, 30c.  
1130 Rose Flowered Mixed. Resembles a rose in form. Pkt., 10c; 3 pkts., 25c.  
1135 Double Spotted Mixed. Superbly blotched and spotted. Pkt., 10c; 3 pkts., 25c.  
1140 Apple (*Momordica Balsamina*). 10 feet. A very ornamental and quick-growing climber. It has a flower, but is grown mostly for the effect of the fruit which follows. This is yellow, looks not unlike an apple. When ripe it opens and shows the seeds and blood-red interior. Pkt., 10c.  
1145 Pear (*Momordica Charantia*). Useful for the edible pulpy arils surrounding the seed, also for the edible fruit itself, which is prepared, usually by boiling, before it is ripe. Vine grows 10 feet or more. Similar to above, only the fruit is pear-shaped. Pkt., 10c.

**BARTONIA**

1150 Aurea. A mass of large yellow flowers growing 12 inches high with silvery thistle-like foliage. Sow seed outdoors in April or May. Pkt., 10c.

**CALENDULA (Pot Marigold)**

Plants about 1 foot high and 1 foot in diameter. Plant outside the latter part of April or for early blooming, inside in March, transplanting first of May.

- 1290 Orange King. Bears giant flowers, sometimes 4 inches in diameter. Color, bright orange. Pkt., 10c; 3 pkts., 25c.  
1270 Lemon Queen. Like the above, but of pure lemon-yellow. Pkt., 10c; 3 pkts., 25c.  
1260 The Ball. Immense double flowers of brilliant orange borne on long strong stems. Pkt., 25c; 3 pkts., 60c.  
1280 Meteor. Handsome, double and beautiful striped, cream white petals, edged with orange-yellow. Pkt., 10c; 3 pkts., 25c.  
1300 Mixed Colors. Pkt., 10c; 3 pkts., 25c.

**NEW CALENDULAS**

- 1292 Radio. A new introduction from Europe. It is entirely different from the ordinary Calendula in that the petals are quilled, curled and twisted and we are certain that with the present demand for curled and twisted petalled formed flowers it will prove a valuable type for the average garden lover. The flowers are of good size and bright orange in color. Pkt., 25c.  
1295 Sensation (Campfire). A gorgeous new giant type of superb quality. The flowers are produced on long straight stems and are exceedingly vigorous in growth. The blooms are flat, very double and brilliant orange with a crimson or scarlet sheen. We believe this is undoubtedly the largest Calendula yet produced. Pkt., 25c.

**CALLIOPSIS**

Masses of rich golden, red and brown flowers. It is best to sow where they are to bloom, thinning out to 10 inches apart. To lengthen blooming period, keep the old flowers cut off. Excellent for cutting. Height, 1 to 2 feet.

- 1320 Crimson King. A fine dwarf sort, 12 inches high; color rich velvety red. Pkt., 10c; 3 pkts., 25c.  
1325 Drummondii (Golden Wave). Large, rich, golden yellow flowers with very small chestnut-brown centers. 18 inches high. Pkt., 10c; 3 pkts., 25c.  
1330 Golden King. Golden yellow with brown center. 18 inches high. Pkt., 10c; 3 pkts., 25c.  
1340 Tall Double Mixed Colors. Pkt., 10c; 3 pkts., 25c.  
1345 Tall Single Mixed Colors. Pkt., 10c; 3 pkts., 25c.

**CANDYTUFT (Iberis)**

Excellent for borders, bedding and rockwork; may be planted in the fall for early spring flowers. For summer flowers sow in April. Height, 1 foot.

- 1360 Crimson      1375 Rose Cardinal  
1365 Lilac      1380 White  
1370 Pink      1385 Mixed Colors

Any of the above, Pkt., 10c; 1 oz., 50c.

1390 Giant White Hyacinth-Flowered. A giant Candytuft, bearing immense snowy-white spikes. Pkt., 10c; ¼ oz., 35c; 1 oz., \$1.00.

**CARDINAL CLIMBER**

1400 Probably the most popular annual climber; growing rapidly up to 25 feet high; deeply cut leaves; clusters of cardinal-red tubular flowers, 1½ inches across. Excellent for covering stumps, trellises, etc. Soak the seed 12 hours in warm water before planting. Sow the latter part of April. Pkt., 20c; 3 pkts., 50c.

**CELOSIA (Cockscomb)**

Beautiful for color effect and dried winter bouquets. Sow seed inside in March and transplant to the open in May or sow outdoors in April and May.

**Celosia Childsi (Chinese Woolflower)**

Three to four feet high with large ball-shaped flower heads of brilliant color, blooms from July till frost. Sow inside in March and transplant the first of May or sow outside the latter part of April.

1500 Mixed. Pkt., 15c; 3 pkts., 35c.

**Celosia Cristata Tall**

The largest type of Cockscomb that has ever been introduced. In our trials this superb type produced giant heads that measured 14 inches across and in the most gorgeous colors.

- 1552 Improved Cristata Tall. Crimson. Pkt., 25c; 3 pkts., 60c.  
1550 Improved Cristata Tall. Mixed. Pkt., 25c; 3 pkts., 60c.

**Celosia Cristata Dwarf**

Immense velvet-like heads growing from 12 to 18 inches high. An excellent pot plant as well as a good low border.

1530 Cristata Dwarf Mixed. (Imported strain.) Pkt., 10c; 3 pkts., 25c.



CALENDULA—POT MARIGOLD



**CELOSIA FEATHERED OR PLUMED**

Beautiful, large, feathery, or plumelike heads. Growing from 3 to 4 feet tall.

1575 Mixed. Pkt., 10c; 3 pkts., 25c.

**CARNATION**

Seeds sown in early spring will flower very profusely from July till frost.

**CHABAUD'S.** Beautiful fringed double flowers of attractive coloring in the open and are greatly prized for table decoration. With slight protection they will survive any ordinary winter and bloom freely the following spring.

1420 Cardinal Red 1430 Rose Pink  
1435 White 1433 Salmon-Rose  
1440 Yellow 1425 Deep Rose

Any of the above, pkt., 25c; 3 pkts., 60c.

1445 Collection. 1 pkt. each of the above 6 colors, \$1.10.

1450 Chabaud's Mixed Colors. Pkt., 20c; 3 pkts., 50c.

1460 Marguerite Carnations, Mixed Colors. Producing an abundance of fringed, highly scented flowers. Of medium height. Pkt., 15c; 3 pkts., 35c.

**CENTAUREA**

**CENTAUREA CYANUS** (Cornflower, Bachelor's Button, Blue Bottle, Bluets, Ragged Sailor). Flowering freely from July until frost. Reseeds itself from year to year, making it valuable for naturalizing. Seed may be sown in the fall for early blooming or in April and May for summer flowers. 2 to 3 feet.

1600 Double Blue. 1615 Double White  
1602 Double Carmine 1620 Double Mixed  
1605 Double Maroon 1630 Single Blue  
1606 Double Mauve 1635 Single Mixed  
1610 Double Pink

Prices for above: Pkt., 10c; 3 pkts., 25c.

**CENTAUREA IMPERIALIS.** Sweet-scented, artistic-shaped flowers are borne on long, stout stems, and when cut will last a week in water. Height, 2½ feet.

1650 Amaranthus Red 1672 White Shaded Rose  
1655 Brilliant Rose 1667 Rosy Lilac  
1660 Deep Lavender 1670 White  
1665 Purple 1680 Mixed

Prices for above: Pkt., 10c; 3 pkts., 25c.

1590 Candidissima (Dusty Miller). Broad silvery white foliage; fine for edging. Seed should be sown indoors in March and transplanted to the open in May. Height, 10 inches. Pkt., 15c; 3 pkts., 35c.

1640 Gymnocarpa. Beautiful silvery gray leaves arching gracefully. Height, 1¼ feet. Pkt., 10c; 3 pkts., 25c.

1685 Suaveolens. A very pretty yellow-flowered variety, very sweet-scented. Pkt., 10c; 3 pkts., 25c.

**CHINESE FORGET-ME-NOT**

1925 Cynoglossum, Amabile Blue. A lovely plant growing 18 to 24 inches tall, with flowers of true Forget-Me-Not blue. The individual flowers are like a huge Forget-Me-Not. Pkt., 15c; 3 pkts., 35c.

1938 Cynoglossum, Amabile Pink. (New.) A lovely new shade of rich, deep pink. Pkt., 20c.

**CHRYSANTHEMUMS**

Showy and effective garden favorites, extensively grown for cut flowers and summer-flowering border plants; quite distinct from the hardy perennial and autumn-flowering varieties. Sow seed as soon as ground has become dry and warm. Height, 2 feet.

**SINGLE FLOWERING VARIETIES**

1725 Burridgeanum. Pure white petal with zone of rich mahogany-red and inner zone of yellow surrounding the dark brown center. Pkt., 10c; 3 pkts., 25c.

1729 Eastern Star. Primrose-yellow with dark brown center. Pkt., 10c; 3 pkts., 25c.

1732 Morning Star. Primrose-yellow petals with halo of deeper yellow; dark yellow center. Pkt., 10c; 3 pkts., 25c.

1736 The Sultan. Rich Wallflower-red with narrow yellow zone; brown center. Pkt., 10c; 3 pkts., 25c.

1739 Single Mixed. All colors, very interesting. Pkt., 10c; 3 pkts., 25c.

**DOUBLE FLOWERING VARIETIES**

1742 Coronarium. Sulphur-yellow. Pkt., 10c; 3 pkts., 25c.

1746 Coronarium White. Pkt., 10c; 3 pkts., 25c.

1750 Coronarium Mixed. Pkt., 10c; 3 pkts., 25c.

**CLARKIA**

Tall spikes densely covered with handsome double flowers, resembling a spray of apple blossoms. Sow in late April. Height, 2 feet.

1760 Apple Blossom. Lovely pink.

1765 Brilliant. Rich salmon-scarlet.

1770 Chamois Queen. Extra double; salmon-pink.

1775 Salmon Queen. Extra double; salmon-pink.

1780 Scarlet Queen. A brilliant orange-scarlet.

1785 White Prince. Pure white.

1795 Double Mixed.

Prices for above, pkt., 10c; 3 pkts., 25c.

1790 Collection. 1 pkt. each of above 6 colors, 45c.

**COSMOS****Extra Early Double Crested**

This wonderful new introduction forms a perfect bush three feet high, literally covered with long-stemmed double flowers. About 75 per cent will come true double. They will bloom in 70 days from date of planting, so that seed sown in the latter part of April will bloom by the Fourth of July and continue until frost.

1860 Crimson King. Pkt., 30c.

1865 Pink Beauty. Pkt., 30c.

1870 White Queen. Pkt., 30c.

1875 Mixed Colors. Pkt., 30c; 3 pkts., 75c.

**Early Giant-Flowering**

This excellent sort supplies the long-felt need of an early blooming Cosmos. It grows from three to four feet high and produces a multitude of giant perfectly formed flowers from July until frost. An excellent subject for background borders.

1890 White

1880 Crimson

1885 Pink

1900 Mixed Colors

Prices for above, pkt., 10c; 3 pkts., 25c.

1895 Collection. 1 pkt. each of above 3 colors, 25c.

**Giant Late Flowering or Lady Lenox**

Huge flowers, often measuring 4 inches across, on long stems. Blooms from late August until frost.

1905 Giant Crimson

1910 Lenox Pink

1915 Lenox White

1925 Mixed Colors

Prices for above, pkt., 10c; 3 pkts., 25c.

1920 Collection. 1 pkt. each of the above 3 colors, 25c.

**CLEOME (Giant Spider Plant)**

1800 Pungens Gigantea. The plant attains a height of 3½ feet, well-branched, each branch terminated by a large head of bright rosy lilac flowers. Seed should be sown in the open ground as soon as the weather is warm and settled, and the plants given sufficient room to develop their full beauty. Pkt., 10c; 3 pkts., 25c.

**COBAEA (Cathedral Bells)**

A fine summer climbing plant, quick-growing and bearing large, bell-shaped flowers. In sowing, place the seed edgewise and cover lightly. It will be beneficial to soak the seed in warm water for 6 to 8 hours before sowing. Height, 20 feet.

1815 Scandens. Blue. Pkt., 10c.

1820 Scandens Alba. White. Pkt., 15c.

**COLEUS**

Ornamental foliage plants, producing the most attractive colors. The seed is very fine, so in sowing merely press them into the soil and water very lightly. They should be planted inside in March and transplanted about the first of May.

1830 Rock's Superb New Hybrids. From a celebrated collection of named varieties. Pkt., 25c.

1835 New Large-Leaved Hybrids. Extremely large, beautifully colored sorts. Pkt., 25c.

**COSMIDIUM**

1850 Orange Crown. A new annual, forming elegant bushy plants 2 feet high. Flowers 1½ inches in diameter of rich orange color, shading to bright golden yellow at the edges. Excellent for cutting. Sow the seed in the open ground in April or May. Pkt., 10c.

**DAHLIAS**

But few people know Dahlias can be raised from seed and will bloom the first year if sown early. The seed germinates easily and will grow in any garden. Plant in shallow box or pan early in March and transplant to the garden when all danger of frost is over.

1965 Finest Single Mixed. (Selected from named varieties.) Pkt., 20c.

1955 Finest Double Mixed. (Selected from named varieties.) Pkt., 30c.

1950 Cactus Flowering Mixed. (Selected from named varieties.) Pkt., 50c.

1960 Peony-Flowered Mixed. (Selected from named varieties.) Pkt., 35c.

**DATURA (Angel's Trumpet)**

1975 Cornucopia (Horn of Plenty.) Showy, large-branching plants, growing three to five feet high, bearing immense trumpet-shaped flowers. The mouth of the corolla is a creamy white, while the outside is marbled with deep purple. If started early will flower from early summer until frost. Pkt., 10c.

THE NEW COSMOS, KLONDYKE ORANGE  
FLARE, IS A REAL NOVELTY.



**DIANTHUS or PINKS**

Seed can be sown under glass in the spring, or in an open, sheltered bed. The seedlings are easily transplanted and should stand 8 to 12 inches apart. If especially large, brilliant flowers are desired, a bed of loam, leaf-mold and well-decayed manure should be prepared. Height, 1 foot.

**Double Varieties**

- 2036 **Salmon.** A beautiful shade of salmon-pink. Pkt., 10c; 3 pkts., 25c.  
 2025 **Brilliant Rose.** A bright rose-pink. Pkt., 10c; 3 pkts., 25c.  
 2030 **Fireball.** Rich scarlet. Pkt., 10c.  
 2045 **Snowdrift.** Large pure white flowers, beautifully fringed. Pkt., 10c.  
 2040 **Midnight.** Deep blood-red. Pkt., 10c.  
 2050 **Rock's Special Double Mixed.** Pkt., 10c; 3 pkts., 25c.  
 2020 **Rock's Special Single Mixed.** Pkt., 10c; 3 pkts., 25c.

**A NEW DIANTHUS**

- 2012 **Sweet Wivelsfield.** It is a cross between Dianthus Allwoodi and Dianthus Barbatius. Its habit of growth is very similar to the annual Sweet William except the flowers are larger and range through a greater variety of colors. The flowers are also elegantly scented. Seed sown indoors in March and transplanted to the open ground in May will produce blooms from July to frost. Pkt., 10c; 3 pkts., 25c.

**DIMORPHOTHECA (African Golden Daisy)**

Daisy-like blossoms, 2½ inches in diameter, produced in great profusion. Sow seed outside the latter part of April. Height, 1 foot.

- 2065 **Aurantiaca.** A unique, glossy, rich orange-gold, which brilliant coloring is rendered more conspicuous by the dark disc surrounding the black zone. Pkt., 10c; 3 pkts., 25c.  
 2070 **Aurantiaca Hybrida.** Various shades of white, yellow and orange. Pkt., 15c; 3 pkts., 35c.

**ESCHSCHOLTZIA (California Poppy)**

A genus of the Poppy family, blooms continuously throughout the summer. Sow the seed outside the latter part of April. They are best not transplanted. Height, 1 foot.

- 2110 **Aurantiaca.** Rich orange, the true California Poppy. Pkt., 10c.  
 2120 **Purple Glow.** Purplish red. Pkt., 20c.  
 2125 **Rose Queen.** Rose-pink. Pkt., 10c.  
 2130 **The Geisha.** Inside petals gold, outside orange crimson. Pkt., 15c.  
 2135 **Vesuvius.** Wallflower red. Pkt., 15c.  
 2140 **White.** Pure white. Pkt., 10c.  
 2145 **Double-Flowering Mixed.** Double flowers in mixed white and yellow. About 60% will come true double. Pkt., 15c.  
 2150 **Rock's New Hybrids.** A splendid mixture of new colors. Pkt., 15c; 3 pkts., 35c.

**DOLICHOS (Hyacinth Bean)**

A rapid-growing hardly annual climber with beautiful white or purple flowers which are followed by ornamental seed pods. Sow seed in April in the open ground.

- 2080 **Darkness.** Dark vines with rose-violet flowers; seed pods dark red. Pkt., 10c; oz., 25c.  
 2085 **Daylight.** Snow-white flowers followed by silvery white seed pods. Pkt., 10c; oz., 25c.  
 2090 **Mixed.** Pkt., 10c; oz., 20c.

**ERYSIMUM (Fairly Wallflower)**

- 2100 **Perofskianum.** The plants grow about 18 inches high, bearing throughout the summer dense clusters of brilliant orange-yellow wallflower-like flowers, a rather unusual color in annuals. It is of the simplest culture. Sow the seed in a sunny position. Pkt., 10c.

**EUPHORBIA**

- 2160 **Heterophylla (Mexican Fire Plant.)** Resembling in habit and color the beautiful hothouse Poinsettia. The plants are of branching form, with smooth, glossy green leaves. About mid-summer the top center leaves of each branch turn a vivid orange-scarlet. Sow outside in April. Height, 2 to 3 feet. Pkt., 15c.  
 2165 **Variiegata (Snow-on-the-Mountain).** Very showy with its variegated white and green foliage, and the branches when cut may be used in mixed bouquets. Sow outside in April. Height, 2 feet. Pkt., 10c.

**GAILLARDIA (Blanket Flower)****ANNUAL VARIETIES**

Bloom from early summer till November. Excellent for beds, borders or for cutting. Should be sown where they are to bloom. Height, 1½ feet.

- 2180 **Amblyodon.** Rich blood-red, tipped yellow; single. Very attractive. Pkt., 10c.  
 2190 **Lorenziana Double Mixed.** A charming, profuse, double-flowering strain; beautiful mixed colors. Pkt., 10c; 3 pkts., 25c.  
 2200 **Picta Single Mixed.** Fine single sorts of showy colors. Pkt., 10c; 3 pkts., 25c.

**GERBERA (Transvaal Daisy)**

- 2227 **Jamesoni Hybrids.** A gorgeous and graceful Daisy-like flower from 2 to 4 inches across with long narrow petals recurving from a small center. They are borne on exceedingly long stems and when cut for arrangements no description can convey the real beauty they possess. The colors include the loveliest of tints from pure white through, cream, yellow, salmon, orange, cerise and bright red to reddish violet. They are half-hardy perennials, best treated as annuals. Seed sown early will bloom the first year and the plants can be wintered over in a coldframe for blooming the following year. Pkt. of 25 seeds, 25c.

**GILIA (Blue Thimble Flower)**

- 2230 **Capitata.** Grows about 18 inches high with graceful feathery foliage and bears globular rich lavender-blue flowers about one inch across. It blooms a long period and is excellent for cutting. Also retains its lovely color when dried. Pkt., 10c.

**GLOBE AMARANTH (Gomphrena)**

Also known as Bachelor Button. An everlasting, with beautifully colored flowers resembling clover heads. They retain their color and are admirable in winter bouquets. About 2 feet high. Sow seed in the open ground the latter part of April, thin out the young plants to 15 inches apart.

- 2250 **Flesh.** Light pink. Pkt., 10c.  
 2265 **White.** Pure white. Pkt., 10c.  
 2255 **Orange.** Unusual salmon-rose. Pkt., 15c.  
 2260 **Red.** Purplish red. Pkt., 10c.  
 2275 **Mixed.** Pkt., 10c; 3 pkts., 25c.  
 2270 **Collection.** 1 pkt. each of the above 4 colors, 35c.

**GODETIA**

Magnificent hardy annuals, producing numerous delicately colored flowers. They thrive in shady places. Plant seed in April, thinning out the young plants to 1 foot apart. One foot in height.

- 2310 **Rosamond.** Shell pink. Pkt., 15c; 3 pkts., 35c.  
 2305 **Gloriosa.** Brilliant blood red. Pkt., 15c; 3 pkts., 35c.  
 2300 **Duchess of Albany.** Pure white. Pkt., 15c; 3 pkts., 35c.

**GOURDS, Ornamental**

A quick-growing interesting annual climber, useful for covering arbors, walls or fences. Ornamental foliage, with fruit in many peculiar shapes. Sow seed outside the middle of April.

- 2325 **Apple.** Round, beautifully striped. Pkt., 10c; 3 pkts., 25c.  
 2330 **Calabash or Pipe.** Odd-shaped fruit which is used to an advantage in making pipes. Pkt., 10c; 3 pkts., 25c.  
 2335 **Dipper.** May be used as a dipper. Pkt., 10c; 3 pkts., 25c.  
 2340 **Dishcloth.** The fibrous interior may be used as a sponge. Pkt., 10c; 3 pkts., 25c.  
 2345 **Hercules Club.** Fruit grows three to four feet long. Pkt., 10c; 3 pkts., 25c.  
 2355 **White Egg.** Fruit like hen's eggs and may be used as nest eggs. Pkt., 10c; 3 pkts., 25c.  
 2350 **Sugar Trough.** Makes useful container, immense in size. Pkt., 10c; 3 pkts., 25c.  
 2352 **Turk's Turban.** Odd, brightly colored fruit. Pkt., 10c; 3 pkts., 25c.  
 2375 **Fancy Mixed.** Pkt., 10c; oz., 35c.  
 2365 **Collection.** 1 pkt. each of above 8 varieties, 60c.

**ORNAMENTAL GRASSES**

- 5905 **Agrostis Nebulosa (Cloud Grass).** Exceptionally graceful. Excellent for mixed bouquets. Height, 18 inches. Pkt., 10c.  
 5910 **Briza Maxima (Quaking Grass).** Large racemes of beautiful rattles, excellent for cutting. Height, 18 inches. Pkt., 10c.  
 5915 **Coix Lachrymae (Job's Tears).** Broad cornlike leaves and lustrous slate-colored seeds which may be used for beads. Valuable for winter bouquets. 3 feet high. Pkt., 10c.  
 5925 **Pennisetum Longistylum.** Greenish white plumes, excellent for bedding. Pkt., 10c.  
 5930 **Pennisetum Ruppelianum (Purple Fountain Grass).** Graceful plumes growing 3 feet in height. Pkt., 10c.  
 5940 **Zea Japonica Quadricolor Gigantea (Giant Rainbow Corn).** Foliage beautifully striped in rose, purple, green and cream colors. Pkt., 10c.

**GYPSOPHILA**

Sow in April. Successive plantings should be made for a continuous supply, sowings about three weeks apart. Plants should be 12 inches apart. Height, 2 feet.

- 2400 **Elegans Grandiflora Alba.** Pure white. Pkt., 10c; oz., 30c.  
 2410 **Elegans Grandiflora Carminea.** Rose colored. Pkt., 10c; oz., 35c.



**HELIANTHUS (Sunflower)**

Sown in April or May they come into bloom early in summer. Seed is best sown where they are to bloom. Plant about the middle of April, thinning out to 12 or 14 inches apart.

- 2460 **Miniature Stella.** Medium large single flowers, or pure golden yellow, with black disc. Pkt., 10c.  
 2455 **Miniature Orion.** The petals are twisted similar to a Cactus Dahlia; rich yellow. Pkt., 10c.  
 2435 **Annus Purpureus.** Deep brownish red at center, shading to golden yellow at the tips of the petals. Pkt., 10c.  
 2445 **Double Chrysanthemum-Flowering.** Large ball-shaped flowers, finely fringed and of a beautiful golden yellow. Pkt., 10c.  
 2450 **Mammoth Russian.** The common Giant Sunflower, grown mostly for its seeds, which make excellent food for parrots and poultry. Oz., 5c; ¼ lb., 15c; 1 lb., 45c.

**HELIOTROPE**

Sow seeds indoors early in the spring.

- 2575 **Large Flowering Mixed.** A fine mixture of large-flowering varieties. Height, 2 ft. Pkt., 25c.  
 2580 **Regal Mixed (New).** The Regal varieties have immense flower heads of the Giant type, but of dwarf, compact growth. Mixed colors. Height 1 foot. Pkt., 25c.

**HELICHRYSUM (Strawflower)**

The best of the Everlastings. Plant is 2½ feet high and produces large, double, Daisy-like flowers, with prominent centers and stiff, overlapping scales, which make a fine display in the garden during the summer. When dried, the flowers retain their shape and color for years, and placed in vases or baskets, make splendid winter bouquets and decorations. Plants succeed in any good garden soil if given plenty of space; place at least one foot apart. For drying, cut the flowers just before fully open and hang them, heads down, until completely dry.

- 2500 **Monstrosum, Fire Ball.** Red. Pkt., 10c.  
 2505 **Monstrosum, Golden Ball.** Yellow. Pkt., 10c.  
 2515 **Monstrosum, Rose Queen.** Carmine-rose. Pkt., 10c.  
 2520 **Monstrosum, Salmon Queen.** Salmon. Pkt., 10c.  
 2525 **Monstrosum, Silver Ball.** White. Pkt., 10c.  
 2530 **Monstrosum, Violet Queen.** Violet-red. Pkt., 10c.  
 2550 **Monstrosum, Finest Mixed.** Pkt., 10c; 3 pkts., 25c.  
 2540 **Monstrosum, Collection.** 1 pkt. each of the above 6 colors, 45c.

**ANNUAL HOLLYHOCKS**

A new strain of Hollyhocks which flower the first year from seed. Identical with the hardy varieties only that they bloom continuously throughout the summer. Seed must be sown outside not later than May 1st or can be sown indoors in March and transplanted on approach of warm weather.

- 2600 **Semi-Double Finest Mixed.** Pkt., 15c; 3 pkts., 35c.  
 2610 **Single Finest Mixed.** Pkt., 15c; 3 pkts., 35c.

**HUMULUS (Japanese Hop)**

2625 **Japonicus.** A very ornamental and fast-growing climbing plant. The foliage resembles in shape that of the common Hop, is very dense, and in color a bright green; valuable for screening. Sow seed in late April; they are best not transplanted. Pkt., 10c.

**HUNNEMANNIA (Giant Yellow Tulip Poppy)**

2635 **Fumariaefolia.** Bright yellow, and about three to four inches across. Stems long and smooth. Sow seed in the open in April or May. 2 feet. Pkt., 10c; 3 pkts., 25c.

Our Baby Blue Morning Glory is an outstanding Annual Vine

**IPOMOEA (Moonflower; Morning Glory)**

Soak seed in warm water overnight to assist rapid germination; sow seed late in April.

- 2670 **Heavenly Blue.** Immense flowers of bright sky-blue color. Very beautiful. Pkt., 15c; 3 pkts., 35c.  
 2690 **Noctiflora (Moonflower).** At night and during cloudy days the vines are covered with an abundance of large pure white fragrant flowers, 5 inches in diameter. A very rapid grower, and excellent for trellises, etc. Pkt., 10c; ½ oz., 35c; oz., 60c.  
 2680 **Baby Blue.** Never have we had a flower which has caused so much comment as this Morning Glory. Blooming from July to frost in one unceasing mass. The individual flowers are 3½ to 4 inches across and of the most beautiful cerulean blue we have ever seen. It does not reseed itself as other types do. The plants grow rapidly to 15 feet and have dense, rich, green foliage. The seed should be soaked in water overnight before sowing. You will miss a rare treat if you overlook this. Pkt., 20c; 3 pkts., 50c.

**IPOMOEA QUAMOCLIT (Cypress Vine)**

Its scarlet or white flowers are produced in profusion and its finely cut foliage is well adapted to ornamental work. Plants will reach a height of ten feet and if planted thickly, will soon make a screen of exquisite foliage and flowers. Sow in May, first soaking the seed in warm water for a few hours.

- 2710 **White.** Pkt., 10c.  
 2700 **Scarlet.** Pkt., 10c.  
 2720 **Mixed.** Pkt., 10c.

We have a delightful new Pink Morning Glory this year.

**KOCHIA (Summer Cypress)**

2750 **Childsi.** A splendid ornamental annual plant, forming dense oval bushes. 2 to 3 feet high; of small, feathery light green foliage. As summer advances this changes to a carmine hue and finally to a fiery red. Also called "Burning Bush." Pkt., 10c; 3 pkts., 25c.

**LANTANA**

2775 **Dwarf Bedding Hybrids.** Grow about 2 feet high, bearing Verbena-like clusters of flowers in orange, white, rose and other colors; excellent for bedding. Seed may be sown indoors in March and transplanted, or outdoors in April and May. Pkt., 10c; ¼ oz., 30c.

**LARKSPUR**

Sow seed in April for July flowers, or for early bloom sow seed in the fall. Thin out young plants to 8 inches apart. Seed is generally slow in germinating. Height, 3 feet.

**GIANT DOUBLE STOCK-FLOWERED**

- |                           |                                  |
|---------------------------|----------------------------------|
| 2800 <b>Ageratum Blue</b> | 2860 <b>Rose</b>                 |
| 2805 <b>Dark Blue</b>     | 2840 <b>Lustrous Carmine</b>     |
| 2870 <b>White</b>         | 2880 <b>Rock's Special Mixed</b> |
| 2830 <b>Lilac</b>         |                                  |
- Prices for above: Pkt., 10c; 3 pkts., 25c.  
 2825 **La France (New).** Salmon-pink. Pkt., 10c.  
 2835 **Los Angeles (New).** Salmon-rose. Pkt., 10c.  
 2875 **Collection.** 1 pkt. each of above 8 colors, 65c.  
 2910 **Emperor Mixed.** Produces an abundance of long, slender spikes in the most delicate colors. Height, 3 feet. Pkt., 10c; 3 pkts., 25c.  
 2930 **Tall Hyacinth-Flowered Mixed.** Flowers appear like double Hyacinths. Height 4 feet. Mixed colors. Pkt., 10c; 3 pkts., 25c.

**NEW GIANT IMPERIAL LARKSPUR**

New type of Larkspur of base branching habit which affords fine long-stemmed cut flowers as well as tall, spirelike effects for which it is most desirable. The colors while not wide in range, are each the finest yet produced in Larkspurs.

- 2935 **Blue Spire.** A deep oxford-blue.  
 2940 **Exquisite Pink Improved.** Soft pink, shaded salmon.  
 2941 **Exquisite Rose.** A delightful bright rose-pink.  
 2943 **Gloria.** Deep rose, darker than Exquisite Rose.  
 2945 **Lilac Spire.** A most beautiful lavender-blue.  
 2952 **Peach Blossom.** A very delicate clear light pink.  
 2960 **White Spire.** Dazzling pure white.

Prices for above: Pkt., 15c; 3 pkts., 35c.

- 2965 **Rock's Superb Mixed.** Of the above varieties. Pkt., 15c; 3 pkts., 35c.

**LAVATERA**

An excellent plant for bedding or borders. The plants average two feet in height, branch freely and flower most profusely from July until fall. Sow in May where they are to bloom and thin out to 12 inches apart.

- 2980 **Splendens Rosea.** Flowers of soft pink, with rich rose or carmine suffusion, which becomes deeper toward the center. The flowers average three inches in diameter and are borne profusely from midsummer until frost. As a border plant it always attracts attention. Pkt., 10c; 3 pkts., 25c.  
 2985 **Splendens Mixed.** Pkt., 10c; 3 pkts., 25c.

**LAYIA (Tidy Tips)**

2990 **Elegans.** Dainty Daisy-like flowers one and one-half inches across, pure yellow, with a small band of cream-white around the outer edges of the petals. The centers are a rich gold at first, later black filaments protrude, tipped with golden anthers. It is easily and quickly grown in a sunny, dry place. In bloom from June to August and about 18 inches high. Pkt., 15c; 3 pkts., 35c.





LUPINES

**LINUM (Flax)**

3010 *Grandiflorum Rubrum*. A hardy annual, growing about one and one-half feet high. Deep rose-colored flowers borne in great profusion. Can be sown early out-of-doors and thrives well in good soil. Pkt., 10c; 3 pkts., 25c.

**LOBELIA**

Plant the latter part of April. The seeds are exceptionally small, hence care should be taken in planting; merely press the seed into the soil. Height, 4 to 6 inches.

3025 *Crystal Palace Compacta*. Dark blue. For borders and bedding. Pkt., 15c.

3035 *Prima Donna*. Rich dark red, compact and dwarf. Pkt., 15c.

3040 *Royal Purple*. Bluish purple with white eye, very compact. Pkt., 15c.

3045 *White Gem*. Forms a ball of snow-white flowers. Pkt., 15c.

3050 *Collection*. 1 pkt. each of the above 4 colors, 50c.

3055 *Finest Mixed*. Pkt., 10c.

**LINARIA**

3005 *Maroccana Hybrida Excelsior, Mixed*. Snapdragon-like flowers. Each bloom also has a long spur similar to Columbine. The colors range through crimson and gold, dark blue, pink, mauve and many other delightful shades. It grows from 1 to 1½ feet high and will bloom eight weeks after sowing. Pkt., 10c; 3 pkts., 25c.

**LUPINES**

They attain a height of two feet, producing long flower spikes. A slightly shaded situation is preferable. Sow seed the latter part of April. The plants should be at least 15 inches apart.

3075 *Dark Blue* 3090 *White*

3080 *Light Blue* 3085 *Rose*

3100 *Mixed Colors*

Prices for the above: Pkt., 10c; 3 pkts., 25c.

3095 *Collection*. 1 pkt. each of the above 4 colors, 30c.

**MARVEL OF PERU (Four O'Clocks)**

Flowers are trumpet shaped and open in the afternoon to remain all night. They are to be had in innumerable bright colors. Seed may be sown any time during April or May and in warmer climates fall sowing is sometimes favorable. The tall varieties grow about 2 feet high and dwarf sorts from 12 to 15 inches.

3240 *Dwarf Mixed*

3250 *Tall Rose*

3245 *Tall Lilac*

3253 *Tall Yellow*

3248 *Tall Red*

3255 *Tall Mixed*

Any of the above: Pkt., 10c; 3 pkts., 25c.

**MATRICARIA (Feverfew)**

3260 *Capensis Alba Plena*. A double White Feverfew. Sow the latter part of April or May. Plants should be 12 inches apart. Height, 18 inches. Pkt., 10c.

3265 *Golden Ball*. Double golden yellow flowers, borne in clusters. Excellent for edging. Height, 1 foot. Pkt., 20c.

**MESEMBRYANTHEMUM**

3295 *Crystallinum (Ice Plant)*. Dwarf trailing annual plants. Flowers white; prized for its singular icy foliage. May be sown any time from the middle of April to the middle of May. 8 inches. Pkt., 10c.

**MIGNONETTE (Reseda)**

Seed sown early will give flowers through the summer and a successive planting in July will afford blooms until frost. Partial shade is preferable. Height, 1 to 1½ feet.

3300 *Rock's Mammoth Crimson*. Immense spikes closely set with florets of a rich orange-red color. Height, 15 inches. Pkt., 15c; 3 pkts., 35c.

3305 *Defiance*. 12 inches high and very fragrant. Pkt., 10c; 3 pkts., 25c.

3310 *Machet*. Is an everbloomer, the flowers lasting until late in the fall. Pkt., 10c; 3 pkts., 25c.

3315 *Odorata Grandiflora*. Flower spikes are small but are sweet-scented. Pkt., 10c; 3 pkts., 25c.

**MIMOSA (Sensitive Plant)**

3325 *Pudica*. The Sensitive Plant affords a great deal of amusement on account of its sensitive, fern-like leaves, which close up instantly when touched. The flesh-pink flowers are rather inconspicuous. Sow outside after settled warm weather, or sow inside in March and transplant. Height, 1 foot. Pkt., 10c.

**ROCK'S MARIGOLD**

The African and French Marigolds are invaluable for their flowers in late summer. Seeds may be sown in the open border, or earlier in a cold frame, and the young plants transplanted late in the spring to where they are to remain. They succeed best in a light soil, with full exposure to the sun. Excellent for cutting.

**AFRICAN MARIGOLDS**

Beautiful large double flowers often measuring 4 inches in diameter and growing 3 to 4 feet high.

3161 *Giant Lemon Queen*. Similar in formation and habit to Orange Prince, except in color, which is lemon-yellow. Pkt., 10c; ¼-oz., 50c.

3166 *Giant Orange Prince*. Large, double-quilled flowers of a rich, deep golden orange color. Pkt., 10c; ¼-oz., 50c.

3177 *Rock's Giant Double Mixed*. A well-balanced mixture of the above varieties. Pkt., 10c; ¼-oz., 35c.

3190 *Rock's Dwarf Double Mixed*. Large quilled flowers, growing on dwarf, compact bushes; 15 inches high; mixed shades of orange and yellow. Pkt., 10c; ¼-oz., 40c.

THE "ALL AMERICAN NOVELTY"  
GUINEA GOLD MARIGOLD  
MAKES A WONDERFUL CUTFLOWER



MARIGOLD







## ROCK'S GIANT PANSIES

Rock's selections as listed below are of the highest types under cultivation; seed especially selected from the largest and most beautiful stocks. For early spring flowers sow seed in early August and give plants a protection of a straw mulch during the winter; where possible, plant in a cold frame. For summer blooming sow indoors in a box or coldframe in early March and transplant to a cool, partially shaded situation in April. Seed sown outdoors in April will produce blooms the last of June.

### Separate Colors

- 3700 **Adonis**. Light blue with white margin. Pkt., 15c; 3 pkts., 35c.  
 3710 **Aurora**. Purplish crimson, edged white. Pkt., 15c; 3 pkts., 35c.  
 3715 **Blue Domino**. Upper petals light blue; lower, deep purple. Pkt., 15c; 3 pkts., 35c.  
 3720 **Bridesmaid**. White, tinted rose; lovely. Pkt., 15c; 3 pkts., 40c.  
 3725 **Canary Yellow**. Black eye; daintily frilled. Pkt., 15c; 3 pkts., 40c.  
 3735 **Golden Queen**. Pure yellow. Pkt., 15c; 3 pkts., 40c.  
 3740 **King of the Blacks**. Jet black. Pkt., 15c; 3 pkts., 35c.  
 3745 **Madame Perret**. Rich shades of red and rose. Pkt., 15c; 3 pkts., 35c.  
 3750 **Prince Bismarck**. Shades of light brown. Pkt., 15c; 3 pkts., 35c.  
 3755 **Prince Henry**. The finest dark blue. Pkt., 15c; 3 pkts., 35c.

### VARIOUS PANSY MIXTURES

- 3788 **IMPROVED SWISS GIANTS, MIXED**. (New). A wonderful new European strain that possesses many fine qualities. Among the most important are the fine color combinations of which many are new to this family. In addition the flowers are of a gigantic size, perfectly round and the plants are of exceptionally sturdy upright habit. They bloom all summer long and have created much favorable comment wherever grown. Pkt., (100 seeds), 50c; 3 pkts., \$1.35.  
 3785 **Rock's Royal Premium**. From choice European strains; giant in size, lovely in type and containing a wide range of color. Pkt., 15c; 1/8 oz., 50c.  
 3780 **Rock's Giant Mastodon**. The largest of all American strains, beautiful in form and delightful in color. Pkt., of 100 seeds, 15c; 3 pkts., 35c; 1/8 oz., \$1.75.  
 3790 **Giant Trimardeau, Mixed**. A large flowering English strain distinguished by their varied colors and strong markings. Pkt., 15c; 1/4 oz., 95c.

## ROCK'S PETUNIAS

It is best to sow the seed indoors in March and transplant to the open ground; however, the single bedding varieties may be sown out-of-doors in the early part of May.

### GIANT DOUBLE FRINGED

Large double flowers, beautifully frilled and fringed.  
 3835 **Mixed**. Pkt. of 200 seeds, 50c; 3 pkts., \$1.25.

### RUFFLED PETUNIAS

3978 **Mixed Ruffled Monster**. Pkt. of 200 seeds, 50c; 3 pkts., \$1.25.

### ROCK'S CALIFORNIA GIANTS

- 3940 **Tall Mixed Colors**. Large flowers, measuring 4 to 6 inches across, elegantly ruffled and fringed. Colors range through every possible shade of crimson, pink, lavender, white and violet. Pkt. of 200 seeds, 20c; 3 pkts., 50c.  
 3945 **Dwarf Mixed Colors**. By far the best strain of Giant Petunias for pot culture or porch boxes. We consider it the most compact Giant Petunia with the largest and best formed flowers of any dwarf type of Petunia on the market today. When in full bloom the plant shows nothing but large, colorful flowers with open throats well marked and veined. Pkt. of 200 seeds, 50c.

### ROCK'S SINGLE BEDDING PETUNIAS

- 3915 **Royal Purple**. A large flower of rich velvety royal purple. For porch boxes and garden effects. Pkt. of 200 seeds, 25c; 3 pkts., 60c.  
 3890 **General Dodds**. A splendid free-flowering type of bright crimson color. Pkt., 10c; 3 pkts., 25c.  
 3895 **Howard's Star**. A very novel sort. Color deep crimson with a very distinct five-pointed star of very light pink. Pkt., 25c; 3 pkts., 60c.

3878 **Blue Bird**. A new variety of a deep steel blue color. The plants are dwarf and produce their flowers on erect stems, making it a valuable bedding variety. Pkt., 25c; 3 pkts., 60c.

3885 **Coppery Red**. Very large in size, robust in growth and unusually free-flowering. The flowers are a rich crimson with a beautiful coppery sheen ruffled and frilled at the edges. Pkt. of 200 seeds, 50c; 3 pkts., \$1.35.

3907 **Rose of Heaven**. Rich, brilliant rose-pink, with an inconspicuous white throat. A slightly deeper pink than Rosy Morn. Pkt., 25c; 3 pkts., 60c.

3910 **Rosy Morn**. Beautiful soft pink; well adapted for either edging or bedding. Pkt., 25c; 3 pkts., 60c.

3925 **Snowball**. Snowy white, very compact. Pkt., 20c; 3 pkts., 50c.

3935 **Rock's Single Bedding Finest Mixed**. Pkt., 10c; 1/4 oz., 70c.

### BALCONY PETUNIAS

3850 **Balcony Blue**. Bright blue in color. Pkt., 25c; 3 pkts., 60c.

3860 **Balcony Rose**. Bright rose-pink. Pkt., 20c; 3 pkts., 50c.

3865 **Balcony White**. Pure white. Pkt., 20c; 3 pkts., 50c.

3855 **Balcony Red**. Deep rich red. Pkt., 20c; 3 pkts., 50c.

3862 **Balcony, Star of California**. (New). Medium sized, velvety violet in color with a touch of crimson and "starred" with five pure white blotches. Pkt., 35c; 3 pkts., 95c.

3870 **Balcony Mixed**. Mixture of above five varieties. Pkt., 15c; 3 pkts., 35c.

PETUNIAS THRIVE AND BLOOM PROFUSELY THROUGH EVEN THE HOTTEST WEATHER

## ROCK'S ANNUAL PHLOX

### DRUMMONDI GRANDIFLORA

The finest large flowering Phlox, growing about 1 foot high and producing huge round-petaled flowers, which overlap each other.

- 4030 **Snow White**. Pure white.  
 4010 **Deep Rose**. Rose with dark eye.  
 4025 **Shell Pink**. Very light pink.  
 4020 **Primrose**. Creamy yellow.  
 4000 **Bright Scarlet**. Fiery scarlet.  
 4005 **Crimson**. With small white eye.  
 4015 **Gold Star**. Pink with gold star.  
 4035 **Violet**. Violet-blue.  
 4050 **Rock's Special Mixed Colors**. An excellent variety of colors.

Price: Any of the above, pkt., 10c; 3 pkts., 25c.  
 4045 **Collection**. 1 pkt. each of the above 8 colors, 60c.  
 4075 **Star of Quedlinburg, Mixed Colors**. Flower petals are frilled and lacinated. Pkt., 15c; 3 pkts., 35c.

### DWARF NANA COMPACTA

This Phlox grows 8 inches high and is the best for ribbon borders or low bedding.

- 4080 **Fireball**. Blood red.  
 4095 **Snowball**. Pure white.  
 4085 **Light Blue**. Lavender blue, white eye.  
 4090 **Salmon-Pink**. Very delicate shades.  
 4097 **Violet**. Deep violet-blue.  
 4100 **Yellow**. Fine light yellow.  
 4110 **Dwarf Mixed**. All colors.

Price: Any of the above, pkt., 15c; 3 pkts., 40c.  
 4105 **Collection**. 1 pkt. each of the above 6 colors, 75c.

## ROCK'S SELECT POPPIES

Seed should be sown where the plants are intended to flower, as they are very difficult to transplant. Sow during April in rows or groups and thin out to about 3 or 4 inches apart.

### SHIRLEY POPPIES

- 4175 **American Legion**. Orange-scarlet of enormous size, borne on long, stout stems. Pkt., 10c; 3 pkts., 25c.  
 4180 **Single Blue**. Various shades of blue. Pkt., 10c; 3 pkts., 25c.  
 4191 **Double Sweet Briar**. (New). Deep rose-pink with blossoms resembling a large double Begonia. Pkt., 25c.  
 4184 **Eldorado** (Ryburgh Hybrids). Flowers are large single, semi-double and double, shades of soft salmon, orange, orange-scarlet, pink, rose and white. Pkt., 10c; 3 pkts., 25c.  
 4195 **Wild Rose**. Shades of rose and pink. Pkt., 10c; 3 pkts., 25c.  
 4200 **Single Mixed**. Pkt., 10c; 3 pkts., 25c.



## MISCELLANEOUS POPPIES

- 4130 **Admiral.** Large single flowers. Glistening white, with a broad margin of brilliant scarlet. Pkt., 10c; 3 pkts., 25c.
- 4135 **American Flag.** Double flowers; white, margined brilliant orange-scarlet with curled petals. Pkt., 10c; 3 pkts., 25c.
- 4140 **Carnation Flowered Double Mixed.** Assortment of colors. Flowers double and fringed. Grow to a height of 3 feet. Pkt., 10c; 3 pkts., 25c.
- 4145 **Flanders.** The common scarlet field poppy of Europe. The first official flower of the American Legion. Pkt., 10c; 3 pkts., 25c.
- 4150 **Glaucum (Tulip Poppy).** Flowers 3 inches in diameter of brilliant scarlet. Pkt., 10c; 3 pkts., 25c.
- 4155 **Peony Flowered Double Mixed.** Double ball-shaped flowers. Pkt., 10c; 3 pkts., 25c.
- 4160 **Tall Single Annual Mixed.** Pkt., 10c; oz., 40c.

## PORTULACA (Rose Moss)

An excellent dwarf plant bearing cup-shaped blossoms in brilliant colors. Sow the seed outdoors in April or May.

- 4225 **Double Mixed.** Will produce about 60% double flowers. Pkt., 20c; 3 pkts., 50c.
- 4235 **Single Mixed.** Large single flowers in an excellent variety of colors. Pkt., 10c; 3 pkts., 25c.

## RICINUS (Castor Bean)

A showy ornamental foliage plant. Plant seeds in open, very rich, deep-spaded ground, in a dry situation.

- 4280 **Cambodgensis.** The finest dark-foliaged Ricinus. Leaves maroon; stem nearly black; fruit bronzy purple. Five feet. Pkt., 10c; oz., 25c.
- 4285 **Red Spire.** (New). Plants grow to a height of 6 feet, with bronzy green leaves and prominent red ribs and veins. Pkt., 10c; 3 pkts., 25c.
- 4290 **Sanguineus.** Blood-red stalks and clusters of red fruit; green-leaved. 7 feet. Pkt., 10c; oz., 25c.
- 4300 **Zanzibariensis Enormis.** The gigantic leaves and great size of the plant surpass any other known Ricinus. Pkt., 10c; oz., 25c.

## SALPIGLOSSIS (Velvet Trumpet)

Easily grown, blooms early and all summer long. The richly colored velvety petals are beautiful beyond description. Sow seed outdoors, or for early blooming sow in March inside and transplant on approach of warm weather in early May.

- |  | Pkt.   | 3 Pkts. |
|--|--------|---------|
| 4350 <b>Light Blue.</b> Veined with gold.....              | \$0.10 | \$0.25  |
| 4340 <b>Crimson.</b> Veined with gold.....                 | .10    | .25     |
| 4365 <b>White.</b> Veined with yellow.....                 | .10    | .25     |
| 4345 <b>Dark Red</b> .....                                 | .10    | .25     |
| 4355 <b>Rose.</b> Veined with gold.....                    | .10    | .25     |
| 4370 <b>Pure Yellow</b> .....                              | .10    | .25     |
| 4360 <b>Violet.</b> Veined with gold.....                  | .10    | .25     |
| 4380 <b>Mixed</b> .....                                    | .10    | .25     |
| 4375 <b>Collection.</b> 1 pkt. each of the above 7 colors, |        | 55c.    |

## SAPONARIA (Bouncing Bet)

A pretty annual, growing about 2 feet high and bearing masses of satiny flowers. Several sowings should be made to keep up a succession of bloom.

- 4455 **Vaccaria,** pink. Pkt., 10c.

## SALVIA (Flowering Sage)

The scarlet Salvias are among the most brilliant red-flowering bedding plants in cultivation. They bloom from August until frost. Seed is best sown inside early in March in a hotbed or shallow box and the young plants transplanted to the open in May. Seed can also be planted in the open ground in May.

- 4400 **America.** Two feet. Continuous bloomers, uniform in habit of growth. The plants grow about 15 inches high with numerous spikes of brilliant scarlet flowers well above the foliage. Pkt., 20c; 3 pkts., 50c.
- 4405 **Bonfire.** Two feet. Compact, oval growing variety, bearing quantities of brilliant scarlet flowers. Pkt., 15c; 3 pkts., 40c.
- 4415 **Fireball.** Similar to Bonfire, except plants are of more compact and dwarf growth. Pkt., 15c; 3 pkts., 35c.
- 4416 **Harbinger.** New variety, seed sown at the end of February, commence to produce in profusion their bright scarlet flowers early in June and maintain a blaze of color until frost. The plants are dwarf and compact in habit. Pkt., 25c; 3 pkts., 60c.
- 4425 **Farinacea.** A perennial variety, but best treated as an annual. The first flowers should be cut to encourage branching out. Will bloom from July until frost. Flowers are a bright blue. Height, 2 to 3 feet. Pkt., 15c; 3 pkts., 35c.
- 4420 **Zurich.** A dwarf scarlet sort, growing from 12 to 15 inches high. Begins blooming in June, continuing through the season. Pkt., 15c; 3 pkts., 35c.

## SCHIZANTHUS (Poor Man's Orchid)

Exceptionally beautiful when in full bloom and literally covered with small orchid-like flowers in the choicest colors. May be started indoors in early March and transplanted to the open ground in May. For indoor blooming, sow seed the latter part of May, transferring the small seedlings to pots.

- 4540 **Wisetonensis Choice Mixed.** An improved mixture, beautifully spotted. Height, 1½ feet. Pkt., 10c; 3 pkts., 25c.
- 4535 **Grandiflora New Giant Hybrids.** More dwarf than the Wisetonensis. All colors. Height 1½ feet. Pkt., 10c; 3 pkts., 25c.

## SCABIOSA

(Mourning Bride)

Beautiful in the garden. Very easily grown and has a long season of bloom. 2 feet high. Sow seed indoors in March; transplant in May. Seed may also be sown outside the latter part of April or in May.

## LARGE FLOWERING DOUBLE VARIETIES

- |                           |                                 |
|---------------------------|---------------------------------|
| 4475 <b>Ageratum Blue</b> | 4490 <b>King of the Blacks</b>  |
| 4480 <b>Cherry Red</b>    | 4510 <b>Yellow</b>              |
| 4485 <b>Flesh Color</b>   | 4520 <b>Rock's Choice Mixed</b> |

Prices: Any of the above, pkt., 10c; 3 pkts., 25c.

- 4515 **Collection—One packet each of the above 5 varieties,** 40c.

## NEW AND BETTER SCABIOSAS

- 4492 **Loveliness.** A soft, delicate salmon-rose. Pkt., 20c; 3 pkts., 50c.
- 4495 **Peach Blossom.** A beautiful shade of peach-blossom pink. Pkt., 10c; 3 pkts., 25c.
- 4500 **Shasta.** Pure white in color and of enormous size. Pkt., 10c; 3 pkts., 25c.

## STATICE (Sea Lavender)

Splendid hardy annual, either for the border or rockery, producing panicles of minute flowers all summer, which can be dried and used for winter bouquets. Sow seed in open ground in May.

- 4600 **Bonduelli.** Golden yellow. Pkt., 10c.
- 4605 **Sinuata Blue.** Pkt., 10c.
- 4615 **Surworowi.** Soft rose. Pkt., 15c.

## STEVIA

4625 **Serrata.** Free-blooming plants, bearing pure white flowers; suitable for summer or winter blooming. Sow seed indoors in March and transplant on approach of warm weather. Height, 2 feet. Pkt., 10c.

## ROCK'S CHOICE STOCKS

Easily grown; fine foliage; fragrant; free-blooming, and a wide range of color. Sow seed in garden in April. For earlier and better bloom sow inside in March and transplant to the open in May.

## Giant "Cut-and-Come-Again" Stocks

The plant begins to bloom in ten weeks from time seed is sown, branch freely, and send up numerous long spikes of sweet-scented double flowers in continuous succession. Well adapted for both outdoor and indoor culture. Height, 18 inches.

- |                                    |                                    |
|------------------------------------|------------------------------------|
| 4700 <b>Brilliant.</b> Blood red.  | 4725 <b>Rose.</b> Rose-pink.       |
| 4705 <b>Creole.</b> Canary yellow. | 4730 <b>Sapphire.</b> Violet-blue. |
| 4715 <b>May Queen.</b> Light blue  | 4740 <b>Rock's Choice Mixed.</b>   |
| 4720 <b>Princess Alice.</b> White. |                                    |

Any of the above: Pkt., 15c; 3 pkts., 35c.

- 4735 **Collection.** One packet each of the above 6 varieties, 65c.

## Improved Large Flowering Ten Weeks Stocks

This type is the best for bedding purposes. Blooms early and continuously. Height, 1 foot.

- |                           |                                  |
|---------------------------|----------------------------------|
| 4770 <b>White</b>         | 4755 <b>Dark Blue</b>            |
| 4748 <b>Canary Yellow</b> | 4760 <b>Light Blue</b>           |
| 4750 <b>Crimson</b>       | 4777 <b>Rock's Special Mixed</b> |
| 4765 <b>Rose</b>          |                                  |

Any of the above, pkt., 10c; 3 pkts., 25c.

- 4775 **Collection.** 1 pkt. each of the above 6 varieties, 45c.



**SWEET WILLIAM**

5090 Annual Mixed. They bloom profusely from July until frost, from the seed sown in April. Variety of colors. If given a slight covering the plant will survive the winter. Pkt., 15c; 3 pkts., 35c.



SWEET WILLIAM

**TAGETES**

5110 Golden Ring (Signata Pumila). A dwarf-growing Marigold bearing an abundance of dainty single orange-yellow flowers. Same culture as Marigolds. 1 foot. Pkt., 15c; 3 pkts., 35c.

**THUNBERGIA (Black-Eyed Susan)**

5125 Alata Mixed. Rapid-growing annual climbers, preferring a sunny situation. Flowers in buff, white, orange, etc., with dark eyes, mixed colors. Sow seed outside in April or May. 4 feet. Pkt., 15c.

**TITHONIA (Mexican Sunflower)**

5135 Speciosa. A very unusual plant from Mexico and one of the finest annuals for screen planting. The plant attains a height of 8 to 10 feet, with heavy stems and foliage giving somewhat of a tropical effect. The flowers are similar to a large single African Marigold or single Dahlia and are of a dazzling orange-scarlet color. It blooms from July to frost and is especially valuable as a background border. Pkt., 25c; 3 pkts., 60c.

**TORENIA**

5150 Fournieri. A very fine annual; covered the entire season with a mass of bloom. Flowers are delicate orchid lavender with three spots of dark purple, bright yellow center. As the seeds are so fine, they should be started inside and transplanted to the open. Plant in a protected situation and water when soil is dry and hard. Pkt., 15c.

**TROPAEOLUM CANARIENSE**

**(Canary Bird Flower)**

5165 Rapid-growing annual climbers. Curious, clear, yellow flowers bear a fancied resemblance to a canary with extended wings. Sow seed in April. Height, 18 feet. Pkt., 10c.

**ROCK'S SUPERB SWEET PEAS**

Specialists have greatly improved the old types in size, quality and color, and have produced new types of exceeding beauty. As a cut flower it has no superior; the gorgeous colors in combination with its exquisite fragrance lend a most sincere admiration to flower lovers.

**Culture.**—A deep, rich, moist soil is best suited for Sweet Peas with plenty of well rotted manure or bone meal. Seed should be sown in March and April or just as soon as the ground may be worked in a trench or furrow about 6 inches deep, covering with 1 to 2 inches of soil, which should be pressed down firmly. When plants are well started, thin out to 3 to 4 inches apart, filling in trench, as they grow, until level. They should be staked up 4 to 5 feet high either with wire netting fastened horizontally or with brush, the former being the most satisfactory. Thorough watering during dry weather is very beneficial. Keep flowers cut off to encourage a continuous bloom.

**ROCK'S GIANT SPENCER SWEET PEAS**

These fine late Spencer types are the most popular for summer blooming. They are huge size, delicately waved and scented and produce three to four flowers on each stem.

- |   |            |
|---|------------|
|   | Pkt. 1 oz. |
| 4802 Ambition. (New). Lavender with a darker shade on the base of the standard and wings..  | 10c 30c    |
| 4805 Austin Frederick (Improved). A new giant lavender .....  | 10c 30c    |
| 4810 Blanche Ferry. Bright carmine-rose with white wings slightly suffused soft pink.....   | 10c 30c    |
| 4815 Bonfire. A large waved soft pink with white wings .....  | 10c 30c    |
| 4820 Commander Godsall. Beautiful new shade of violet-blue .....  | 10c 30c    |
| 4825 Countess Spencer. Delicate soft pink.....  | 10c 30c    |
| 4830 Defiance. Brilliant orange scarlet, huge size elegantly waved. Absolutely fadeless.....  | 10c 30c    |
| 4840 Fluffy Ruffles. An immense flower, duplexed and frilled with long stems. A lovely rich rose-pink, a gleam of soft salmon and a bright creamy undertone blend into a harmonious cream-pink shade..... | 10c 40c    |

- |   |            |
|---|------------|
|   | Pkt. 1 oz. |
| 4845 Gold Crest. A delightful orange tinted salmon .....  | 10c 30c    |
| 4850 Hawlmark Scarlet. Rich flaming scarlet....   | 10c 30c    |
| 4855 Heavenly Blue. Rare new shade of Delphinium blue .....   | 10c 30c    |
| 4860 Hebe. Large bright pink, beautifully frilled   | 10c 30c    |
| 4865 King Mauve. The largest mauve, beautifully waved .....   | 10c 30c    |
| 4870 King White. Large, waved, pure white ...   | 10c 30c    |
| 4880 Magnet. A bright cream-pink.....   | 10c 30c    |
| 4890 Mary Pickford. Dainty cream-pink, suffused salmon .....  | 10c 30c    |
| 4895 Miss California. A delightful orange-salmon and cream-pink .....   | 10c 30c    |
| 4905 Powercourt. One of the finest lavenders ..   | 10c 30c    |
| 4910 Renown. A recent English novelty, large carmine-rose .....   | 10c 30c    |
| 4915 Royal Pink. A beautiful pure pink.....   | 10c 30c    |
| 4920 Royal Purple. Deep rich purple.....  | 10c 30c    |
| 4925 Royal Salute. Deep cerise.....   | 10c 30c    |
| 4930 Snowball (New). A beautifully frilled glistening white .....   | 10c 30c    |
| 4935 Sunset. A pleasing combination of rose, amber and gold .....   | 10c 30c    |
| 4940 Supreme. A lovely soft silvery pink.....   | 10c 30c    |
| 4945 Tangerine (Improved). Deep orange colored flower almost identical to the color of the tangerine orange ..... | 10c 30c    |
| 4950 Warrior. Deep maroon, mammoth size ...   | 10c 30c    |
| 4955 Wembley. Lovely lavender suffused plum-bago blue .....   | 10c 30c    |
| 4960 What Joy. A new deep cream yellow.....   | 10c 30c    |
| 4969 Rock's Superb Mixture. ¼ lb.,  | 70c 25c    |
| 4965 Collection—One packet of each of the above 29 varieties, \$2.25. Would cost \$2.90 if bought separately.     |            |



## ROCK'S MAMMOTH VERBENAS

Very few plants will make such a gorgeous display during the summer months as the Verbenas, or furnish more flowers for cutting. Start seed in the house or under glass early in the spring and transplant after two or three inches of growth or sow in open ground in April. Good healthy plants can be produced readily from seed. They flower in July and continue blooming until severe frost. They are unrivaled as low-growing bedding plants.

### HYBRIDA GRANDIFLORA GIGANTEA

A new strain of Verbenas, prolific blooming, the florets measuring an inch in diameter and the plants are of compact robust habit.

- 5205 **Blue.** With white eye.  
 5210 **Etna.** Intense Paul Campbell geranium red with small yellow eye.  
 5215 **Lavender Glory.** (New). True lavender, creamy white eye. Pkt., 25c.  
 5220 **Lucifer.** A vivid scarlet self.  
 5225 **Luminosa.** Luminous flame plnk, shading to salmon.  
 5230 **Rose Cardinal.** With large white eye.  
 5235 **Rosea Stellata.** Lovely rose-plnk with white eye.  
 5238 **Salmon Pink.** (New). A fine shade of salmon plnk.  
 5240 **Volacea Stellata.** Deep violet, white eye.  
 5245 **White.** Snowy white.  
 5250 **Rock's Mammoth Mixed.**

Any of the above, except where noted: Pkt., 15c; 3 pkts., 40c.

- 5249 **Collection.** 1 pkt. each of the above 10 varieties, \$1.35.

### VARIOUS VERBENAS

- 5285 **Lemon Scented** (*Aloysia Citrodora*). Its pale green delightfully scented foliage goes well with any flower. Pkt., 15c.  
 5280 **Erinoides** (*Moss Verbena*). Produces a mass of moss-like foliage, spreading over the ground like a carpet, above which are borne heads of purplish blue and white blossoms in lavish profusion; comes into flower in June and continues until frost. Pkt., 10c.  
 5190 **Golden Queen.** The earliest to bloom. The flowers are the deepest and brightest shade of yellow yet introduced. Pkt., 15c; 3 pkts., 40c.

### VENIDIUM

- 5180 **Fastuosum.** From far-off South Africa comes this charming new annual and by reason of the recently returned popularity for the daisy-like flowers, this lovely plant should prove the most valuable. It grows from 2 to 3 feet high with large daisy-shaped flowers 3 inches across and of the most brilliant orange with shiny black center and black-purple zone. Given the Royal Horticultural Society's Award of Merit, which is sufficient recommendation for any flower. Pkt., 25c.

### VIOLA CORNUTA (Tufted Pansies)

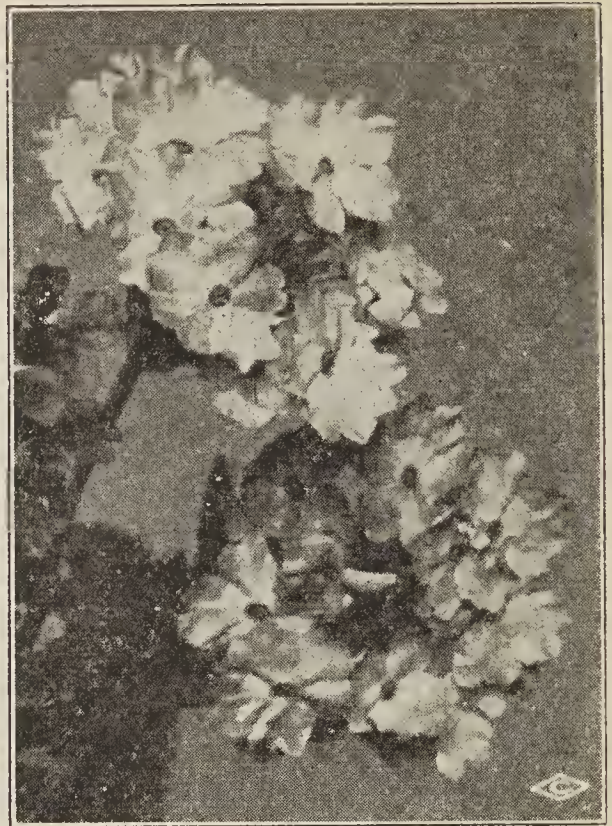
A cross between the Violet and Pansy. Flowers not as large as pansies but elegantly scented. They are in continuous bloom from May until after the light frosts in fall. They are bright in color, withstand poor weather. If covered through the winter they will thrive for several years before dying out.

- 5300 **Admiration.** Violet-blue.  
 5303 **Apricot.** Rich apricot tinged orange towards the center. Pkt., 25c; 3 pkts., 60c.  
 5305 **Blue Perfection.** Light blue.  
 5310 **Fairy Queen.** Lovely sky-blue, daintily edged white.  
 5325 **Lutea Splendens.** Bright yellow.  
 5330 **Papilio.** Lavender-purple, flushed white on lower petals.  
 5335 **Rose.** Glorious shades of rose. This is a new color for this class.  
 5340 **Thuringia.** Pure blue and deep violet-purple with white eye.  
 5345 **White Perfection.** Pure white.  
 5350 **Cornuta Mixed.** A fine assortment of colors.

Except where noted: Pkt., 15c; 3 pkts., 35c.

### VINCA or MADAGASCAR PERIWINKLE

- Bedding or pot plants with glossy deep green leaves and bright myrtle-like flowers. Easily grown from seed and bloom continuously. Sow seed outdoors in May for August blooms. One foot high.  
 5375 **Delicata.** Soft plnk. Pkt., 10c.  
 5380 **Rosea.** Rose with dark eye. Pkt., 10c.  
 5385 **Rosea Alba.** Rose with dark eye. Pkt., 10c.  
 5390 **Rosea Alba Pura.** Pure white. Pkt., 10c.  
 5395 **Mixed.** Pkt., 10c; 3 pkts., 25c.



VERBENA, ERINOIDES

### VISCARIA

- 5420 **Finest Mixed.** Free-blooming annuals, form compact plants about a foot high, covered from early summer till fall with their bright flowers, shaped like a single pink. It is best to sow them where they are to bloom, thinning out from 8 to 12 inches apart. Sow seed in April or May. Pkt., 20c.

### WALLFLOWER

Blooms from late July until frost, richly colored and produces splendid effect if planted in beds. Sow seed in March and transplant in May.

- 5440 **Golden Yellow.** Pkt., 15c.  
 5435 **Blood Red.** Pkt., 15c.  
 5450 **Mixed.** Pkt., 15c.

### WILD CUCUMBER VINE

- 5470 **Echinocystis Lobata.** A fast-growing climber, often running 30 feet in a season. White fragrant flowers. prickly seed pods. The foliage is large, of a rich deep green color, giving splendid shade. Sow in April. Pkt., 10c.

5320 **Viola Cornuta, Jersey Gem.** This delightful new variety forms a large compact plant 8 inches high and produces a continuous profusion of bloom from early summer until frost. The flowers are a very charming shade of deep violet-blue and can be relied upon to come about 70 per cent true from seed. Most varieties of this family will resist drought to a large degree and one of the outstanding features in Jersey Gem is its power to continue throwing up flowers even after other Violas are withered up. Pkt., 25c; 3 pkts., 60c.

5322 **Viola Cornuta, Lavender Gem.** It is a replica of Jersey Gem, having the same admirable qualities of compactness of habit, continuous profusion of long lasting bloom, together with its wonderful drought resisting power. The color is a soft deep shade of lavender. Pkt., 35c; 3 pkts., 95c.



## ROCK'S SUPERB ZINNIAS

An old-fashioned bedding plant. The cut flowers last from ten days to two weeks in water and may be had in innumerable soft and bright shades. Seed sown in April or early May will produce flowers from June until frost. Sow seed one-half inch deep, no more, thinning out the young plants from 12 to 14 inches apart. Dwarf types may be allowed to remain closer.

### ROCK'S GIANT DAHLIA-FLOWERED ZINNIAS

The largest and most effective of all Zinnias. The flowers are immense in size and often measure 3 inches in depth and 5 to 6 inches across with petals overlapping and thickly set, making them intensely double. Almost every color may be had.

- 5510 **Canary Bird.** A delicate shade of primrose. Extra large size.
- 5515 **Crimson Monarch.** A deep, bright crimson. Extremely large size and very beautiful.
- 5520 **Dream.** A fine deep rosy lavender, turning to magenta-purple. A new shade in Zinnias.
- 5523 **El Dorado.** (New) A charming shade of rose on a deep salmon ground. Immense flowers.
- 5525 **Exquisite.** Large light rose, shading to a deep Tyrian rose in the center; well named.
- 5530 **Giant Attraction.** A distinct shade of brick red. Very bright and showy.
- 5534 **Golden Dawn.** A beautiful shade of real golden yellow, between Golden State and Canary Bird.
- 5535 **Golden State.** A striking orange-yellow in the bud, turning to orange when in full bloom.
- 5540 **Illumination.** A striking self-color of deep rose. (Tyrian Rose).
- 5545 **Lemon Beauty.** Huge golden yellow, overlaid with brown.
- 5547 **Luminosa.** (New). An entirely new shade in Zinnias. A delightful bright deep pink, slightly suffused salmon.
- 5550 **Meteor.** The darkest of all red shades. A deep, rich, glowing, Spinel red. Large and of excellent form.
- 5553 **Old Gold.** (New). A deep burnished shade of old gold. Probably the largest of all dahlia-flowered Zinnias.
- 5555 **Old Rose.** A charming shade of real old rose. Large and beautiful.
- 5560 **Oriole.** An immense orange-gold bicolor, changing slightly as it ages.
- 5565 **Polar Bear.** The best white we have yet seen in Zinnias.
- 5567 **Purple Prince.** A fine rich purplish red. Large flowers and well formed.
- 5570 **Scarlet Flame.** A large, bright scarlet, with a blending of orange in each petal.
- 5578 **Youth.** A light rose-pink. The most delicate color in this entire class.
- Prices for the above: Pkt., 20c; 3 pkts., 50c.
- 5580 **Special Collection.** 1 pkt. each of these 19 colors, \$2.45.
- 5588 **Rock's Superb Mixture.** A beautiful mixture of all colors. Pkt., 20c; 1/4 oz., 75c; 1 oz., \$2.25.

### CALIFORNIA GIANT ZINNIAS

A creation from the original Giant Double family and resembles that popular type to a certain extent except the flowers have smaller centers and the petals are more loosely placed, and in addition each petal is decidedly imbricated from bud to bloom. The size of the flower is notably increased over the old Giant type and affords a graceful appearance in both flowers and plant.

- 5805 **Cerise Queen.** Beautiful cerise-rose.
- 5808 **Daffodil.** (New). A beautiful, clear light yellow. Pkt., 25c.
- 5810 **Enchantress.** A lovely light rose-pink.
- 5812 **Grenadier.** (New). A very dark rich red.
- 5814 **Lavender Gem.** (New). A fine deep rosy lavender.
- 5815 **Lemon Queen.** Bright lemon-orange.
- 5820 **Miss Wilmott.** Soft silvery pink.
- 5825 **Orange King.** Deep orange.
- 5830 **Purity.** Snow white.
- 5833 **Salmon Queen.** A charming shade of old rose.
- 5835 **Scarlet Gem.** Brilliant scarlet.
- 5840 **Violet Queen.** Deep purplish red.

Any of the above, except where noted: Pkt., 15c; 3 Pkts., 35c.

- 5845 **Collection.** One each of the above 12 pkts., \$1.25.
- 5848 **Rock's Choice Mixed.** Pkt., 15c; 3 pkts., 35c.

### DOUBLE "CUT-AND-COME-AGAIN" ZINNIAS

A splendid new medium sized type; the finest all-purpose Zinnia. The flowers are perfectly double, and perfectly formed, and measure two to three inches across; are borne on long, graceful stems and produced on neat, compact bushes about two feet high.

- |                      |                    |
|----------------------|--------------------|
| 5700 Bright Scarlet. | 5720 Golden Yellow |
| 5705 Canary Yellow.  | 5730 Salmon-Rose   |
| 5709 Crimson         | 5733 Violet        |
| 5716 Flesh Pink      | 5735 White         |
| 5718 Golden Orange   | 5740 Finest Mixed  |

Any of the above: Pkt., 10c; 3 pkts., 25c.

- 5739 **Collection.** One pkt. each of the above 9 colors, 65c.
- 5725 **Pinkie** (New). A lovely new light rose-pink form of the above. Pkt., 10c; 3 pkts., 25c.

### LILLIPUT or MINIATURE ZINNIAS

Small double or miniature Zinnias; bright and colorful in the garden and are unusually attractive in cut flower arrangements. Height, 1 foot.

- |                    |                       |
|--------------------|-----------------------|
| 5760 Canary Yellow | 5768 Red Riding Hood. |
| 5762 Crimson Gem   | 5770 Salmon-Rose.     |
| 5765 Golden Gem    | 5780 White Gem        |
| 5767 Purple        | 5785 Special Mixed    |

Any of the above: Pkt., 10c; 3 pkts., 25c.

- 5784 **Collection.** One pkt. each of the above 7 colors, 50c.

### VARIOUS ZINNIAS

- 5870 **Double Giant, Faust.** A distinct new color. A rich, velvety, blackish maroon. The flowers are of large size, often measuring five inches across and are borne profusely on plants growing about 3 feet high. Pkt., 20c; 3 pkts., 50c.
- 5890 **Victory Quilled, Mixed.** A very unusual type. Petals are intensely double and quilled. Colors are mostly orange, russet, rose, and other autumn shades. Pkt., 15c; 3 pkts., 35c.
- 5865 **Curled and Crested, Mixed.** The petals are twisted, curled and crested into the most unusual forms. A large variety of colors. Pkt., 10c; 3 pkts., 25c.
- 5880 **Pumila Picotee, Delight, Mixed.** A striking flower with the petals daintily curled and ruffled and each one beautifully picoteed. Very floriferous and of compact growth. Pkt., 25c.



ZINNIA FANTASY

BE SURE TO TRY THE NEW ZINNIA FANTASY  
LISTED IN THE NOVELTY SECTION.



# ROCK'S PERENNIAL FLOWER SEEDS

Hardy plants or Perennials bloom the second year from seed and are permanent thereafter, growing larger and stronger, and producing more flowers each year.

Among the Perennials we find some of our most gorgeous flowers; every type and color may be had and

most of them being so hardy that they do not even require covering during the winter. Their superb qualities of furnishing excellent cut flowers, together with their most wonderful bedding and border effects, make them indeed very popular.

## How to Grow Perennial Flowers From Seed

Many of these will bloom the first year from seed if planted early indoors; February or March is best suited. We have noted the varieties which will produce flowers the first year from seed. For early planting sow the seed in earthenware pots or low boxes, filling one inch of the bottom with broken pots, coal ashes or some like material that will furnish drainage. Over this place about two inches of good, rich, well pulverized soil, mixed with about  $\frac{1}{4}$  sand and if possible the same proportion of either leaf mold or well rotted manure. Press the soil down firmly and water; this should be done at least 12 to 18 hours before sowing. Sow the seed thinly over the top and cover with about one-eighth inch of fine soil. Press this covering lightly and water very carefully in order that the seed will not be washed out. It is advisable to place a glass and a few thicknesses of newspaper over the top to prevent too rapid evaporation. A temperature of 65 to 75 degrees will be suitable. A regular watering is also very necessary; if one watering is omitted with some varieties the seeds will be a total loss. The soil should always be kept moist, but not soaking.

When the seeds are up, remove the glass and newspaper and place as near the light and air as possible. If this is not done the young plants are likely to "damp off."

On approach of settled weather the younger seedlings should be transplanted to the open ground, planting in well pulverized soil and watering immediately after planting.

The planting of Perennial seed outdoors may be done any time from the first of May to the first of August; the earlier the better. Select a situation that may be watered regularly and may be artificially shaded. A small cold frame will be of the most helpful use in germinating seed but if you do not possess one, just sow the seed thinly in shallow drills in well pulverized soil. The presence of stones, clods, etc., are very detrimental in securing an even germination. Cover the seed about one-fourth inch and press this soil lightly. Water lightly, thoroughly and regularly until young plants are well established. When of size enough to handle safely they should be transplanted to the position desired. Water thoroughly after transplanting.

## ACANTHUS

**6030 Mollis.** A decorative plant with deeply toothed, heart shaped leaves two feet long by one foot wide; adapted for grouping with other plants for subtropical effect; produces spikes of curious white and rose flowers during July and August, 3 to 4 feet high. Pkt., 10c.

## ACHILLEA (Milfoil or Yarrow)

**6045 Ptarmica Fl. Pl., "The Pearl."** The flowers are pure white, borne in the greatest profusion on strong, erect stems, 2 feet high; blossoms resemble small Pompom Chrysanthemums. Hardy and will thrive in almost any situation. Blooms from June to August. Pkt., 20c.

## ACONITUM (Monkshood)

**6055 Napellus Blue.** Very hardy, growing well under trees or other shaded situations. Has long spikes of blue hood shaped flowers, somewhat resembling the Delphinium. Blooms in July and August. If sown indoors in February will bloom the first year from seed. Height, 3 feet. Pkt., 15c.

## ADLUMIA (Mountain Fringe or Allegheny Vine)

**6070 Cirrhosa.** A hardy biennial climber, but as it re-sows itself year after year, it might be considered perennial. The flowers are tube-shaped, flesh-colored, somewhat like the Bleeding Heart, and completely cover the plants. Blooms from July to September. Flowers the first year from seed if sown early. Height, 15 feet. Pkt., 15c.

## AGROSTEMMA (Crown of the Fields)

Perfectly hardy plants, producing crimson blossoms on long, slender stems. Blooms from July to September. If sown early will bloom the first year from seed. Height, 2 feet.

**6080 Coronaria.** Dark crimson flowers, silvery white foliage. Pkt., 10c.

**6085 Coronaria Alba.** A pure white variety. Pkt., 10c.

## ALSTROEMERIA

**6100 Aurantiaca.** Belongs to the Amaryllis family; quite hardy, flowers orange color streaked with red. A well established plant will produce five to six flower stalks, carrying ten to fifteen blooms. Pkt., 25c.

## ALYSSUM

**6120 Saxatile Compactum ("Basket of Gold").** An indispensable plant for the rockery or border, growing one foot high, blooming in May and June; masses of broad, flat heads of bright golden yellow flowers; will bloom first year from seed if sown early. Pkt., 10c.

**ROCK'S LONG-SPURRED HYBRID COLUMBINE  
IS A REAL PRIZE WINNER FOR YOUR  
AMATEUR SHOWS!**

## AMPELOPSIS (Boston Ivy or Japan Ivy)

**6135 Veitchi.** Hardy perennial climbing plant. The foliage is of a rich olive-green, changing to various shades of bright crimson and scarlet in the fall. Seed frequently requires sixty days to germinate and should be kept moist at all times. Pkt., 10c; oz., 50c.

## ANCHUSA (The Improved Italian Alkanet)

**6150 Italica Dropmore.** Rich blue flowers during the months of May, June and July. Treated as biennials, as the old plants exhaust themselves at the end of two or three years. They reproduce themselves, however, from self-sown seed. Height, 4 to 5 feet. Pkt., 15c; 3 pkts., 35c.

## ANEMONE (Japanese Windflower)

**6160 St. Brigid.** True Irish strain of Anemones. Flowers in August, and continuing until November. Flowers semi-double, broad, perfectly formed and of brilliant, gorgeous colors. Sow outdoors in May and keep shaded until well started. Seeds are very slow in germinating. Height, 1 to 2 feet. Pkt., 15c.

## ANTHEMIS (Hardy Marguerite)

**6170 Tinctoria.** A hardy perennial for borders or bedding, bearing Daisy-like golden yellow blossoms almost the entire summer. Height, 18 inches. Blooms the first year from seed if sown early. Pkt., 15c.

## AQUILEGIA (Columbine)

Hardy perennials. Present an unusual wealth of color and form. Seed sown in the house in February will frequently produce blooms the same year. Blooms in May and June.

**6180 Alba Plena.** Pure snowy white double flowers. Height, 2 feet. Pkt., 10c.

**6185 Coerulea (Rocky Mountain Columbine).** Bright blue and white long-spurred flowers. Height, 1 to 2 feet. Pkt., 15c.

**6195 Skinneri.** Yellow, with scarlet spurs, the sepals greenish orange. Height, 2½ feet. Pkt., 20c.

**6200 Rock's Long-Spurred Hybrids.** Our own strain of long-spurred Columbines. The plants grow 2½ feet in height and are strong and thrifty in growth. Flowers are unusually large with extra long spurs and shade through all of the charming tones of cream, pink, lavender, blue, white, red, etc. Seed sown very early indoors will often bloom the first year. Pkt., 30c; 3 pkts., 75c.

## ARABIS (Rock Cress)

**6220 Alpina.** Early spring-flowering plant, adapted for edging and for the rock garden. Covered with pure white flowers, blooming from April to June. Height, 6 inches. Pkt., 10c.



**ARMERIA (Sea Pink or Cliff Rose)**

6240 *Formosa*. A dwarf-growing plant, very useful in the rockery and border. Bears double flowers in rose-pink shades. Foliage bright green. Height, 1 foot. Blooms May to July. Pkt., 15c.

**ASTERS (Michaelmas Daisy)**

Late-flowering hardy plants, bloom during September and October. Plant in masses for the best effect.  
6285 *Rock's New Large Flowering Hybrids*. One of the late flowering types. Daisy-like flowers of the most beautiful shades. Pkt., 20c.

**AUBRIETIA (Rainbow Rock Cress)**

6297 *Large Flowering Hybrids*. Hardy trailers for beds, rockwork or herbaceous borders; very similar to *Alyssum*. Bright various colored flowers in April and May. Height, 6 inches. Pkt., 25c.

**BAPTISIA (False Indigo)**

6305 *Australis*. A hardy perennial, producing racemes of bright blue, pea-shaped flowers in June and July. Height, 3 feet. Pkt., 15c.

**BELLIS (English Daisy)**

A perennial, blossoming freely all spring and summer. Plant is 6 inches high and is valuable for borders. Should be given a little protection through the winter—a mulch of leaves or straw after the ground freezes solid.

6320 *Perennis Fl. Pl. Monstrosa, Alba*. White, double flowers. Pkt., 20c.

6325 *Perennis Fl. Pl. Monstrosa, Rosea*. Rose, double flowers. Pkt., 20c.

6330 *Perennis Fl. Pl. Monstrosa, Rubra*. Fine red; double flowers. Pkt., 25c.

6335 *Perennis Fl. Pl. Monstrosa, Mixed Colors*. Pkt., 20c.

**BOCCONIA (Plume Poppy)**

6345 *Japonica*. Hardy herbaceous plants. Leaves deep green, underside silvery white, similar in shape to the oak leaves. Flowers are buff-colored, borne in large panicles. Height, 5 to 7 feet. Pkt., 10c.

**BOLTONIA (False Chamomile)**

A showy, hardy perennial plant with large, single Aster-like flowers; in bloom during the summer and autumn months.

6360 *Latisquama*. Pink-tinted lavender. 4 to 5 feet. Pkt., 15c.

**CAMPANULA****(Bellflower)**

Indispensable, bell-shaped, hardy garden flowers, produced profusely from June to August. Some varieties will bloom the first year from seed if sown early.

6405 *Carpatica* (Carpathian Harebell). A compact species not exceeding 8 inches high, flowers clear blue, 1 inch in diameter. Pkt., 10c.

6420 *Persicifolia* (Peach Bells). Grows 2 feet high and produces blue flowers from July to August. Pkt., 20c.

6435 *Pyramidalis* (Chimney Bellflower). A plant for the border, forming a perfect pyramid, with large blue flowers. 4 to 5 feet. Blooming August and September. Pkt., 10c.

**CAMPANULA CALYCANTHEMA****(Cup and Saucer)**

The finest of the Canterbury Bells, differing from the *Campanula Medium* in that it has a calyx surrounding the flower and of the same color. 2 to 3 feet high. Fine for pots or borders.

6450 *Blue*. 6460 *White*.  
6455 *Rose*. 6470 *Finest Mixed*.

Prices, any of the above: Pkt., 15c; 3 pkts., 35c.

6465 *Collection*: 1 pkt. each of above three colors, 35c.

**CAMPANULA MEDIUM (Canterbury Bells)**

Very attractive and showy biennials. Bell-shaped flowers of beautiful colors. The plants grow to a considerable size, branching widely, so care should be taken in setting them out to allow not less than two feet each way. Height, 2 to 3 feet. Blooms June and July.

6475 *Single Blue*. 6484 *Single White*.  
6478 *Single Lilac*. 6490 *Single Mixed*.  
6481 *Single Rose*.

Prices, any of the above: Pkt., 10c; 3 pkts., 25c.

6487 *Collection*: 1 pkt. each of the above four colors, 30c.

6493 *Double Blue*. 6502 *Double White*.  
6496 *Double Lilac*. 6508 *Double Mixed*.  
6499 *Double Rose*.

Prices, any of the above: Pkt., 10c; 3 pkts., 25c.

6505 *Collection*: 1 pkt. each of the above four colors, 30c.

**CANNAS**

6515 *Rock's New Large-Flowered Hybrids*. Our mixture contains seed of the very best varieties saved from our own celebrated stocks. Soak the seed in warm water until they show evidence of swelling and plant in a sandy soil. When well started, transplant to a desirable location. Seeds: Pkt., 15c; oz., 75c.

**HARDY CARNATIONS**

These varieties are hardy, a covering of straw or leaves during the winter will be very beneficial. Height, 1 foot.

6530 *Double Grenadin, Pink*. Pkt., 15c.

6535 *Double Grenadin, Red*. Pkt., 15c.

6540 *Double Grenadin, White*. Pkt., 15c.

6545 *Double Grenadin, Mixed*. Pkt., 15c.

**CENTAUREA**

6565 *Montana* (Perennial Cornflower). Of easy culture, delighting in an open, sunny position. Seed sown early will bloom the first year. Grows 2 feet high, bearing large, violet-blue flowers from June to September. Pkt., 15c.

**CERASTIUM (Snow-in-Summer)**

6575 *Tomentosum*. A low-growing plant with silvery foliage and white flowers in May and June; will bloom the first season if planted early. Height, 4 inches. Pkt., 15c.

**CHRYSANTHEMUM****(Hardy Daisy)**

The improved varieties of *Marguerite*, early and late blooming, which give a succession of long-stemmed flowers during four months of the year. These Daisies have a small yellow center with long white petals, the slender stems springing from the base of the plant.

6590 *Maximum King Edward VII* (Moonpenny Daisy). Flowers of extraordinary size, of purest white, perfect form, and free-flowering. Blooms July to September. If sown early indoors, will bloom the first year. 3 feet. Pkt., 15c; 3 pkts., 35c.

6595 *Maximum, Mrs. C. Lothian Bell*. Pure white; largest flowered variety of this class; measure as high as 6 inches across, borne on long robust stems. Continues to bloom until October. Will bloom the first season if planted early. Height, 2½ to 3 feet. Pkt., 20c; 3 pkts., 50c.

6600 *Shasta Daisy, Alaska*. A splendid hardy perennial variety, with flowers rarely less than four inches across, of the purest glistening white, with broad overlapping petals, and borne on long, strong stems. Seed sown early inside will produce flowers the first year. Height, 2 feet. Pkt., 15c; 3 pkts., 35c.

**COREOPSIS (Tickseed)**

Of pure golden yellow, bearing profusely from June to October. Flowering the first year if sown early. Height, 2 feet.

6620 *Lanceolata Grandiflora*. Flowers large, often 5 inches in diameter. Pkt., 10c; 3 pkts., 25c.

6625 *Lanceolata Grandiflora Fl. Pl.* New double and semi-double form; perfectly hardy type and will bloom the first year from seed if sown indoors in March. Pkt., 20c; 3 pkts., 50c.

**DELPHINIUM****(Perennial Larkspur)**

Few plants are so wonderful in the garden as *Delphinium*. They are valuable for their loveliness of color, varying from the palest lavender through every conceivable shade of blue to deep indigo. They thrive in almost any situation or soil and are easily increased, being perfectly hardy. A good, deep, rich soil will repay with larger and better flowers. Remove the flower before the seed pods form and they will flower again later in season.

**Various Sorts**

6655 *Belladonna*. Continuous bloomer from the end of June until cut down by hard frost. The clear turquoise blue of its flowers is not equalled by any other flower. Pkt., 25c; 3 pkts., 60c.

6660 *Bellamosum*. This is a dark blue form of *Belladonna* with same habit of growth, freedom of bloom and other good qualities, but with intensely rich, deep blue flowers. Pkt., 25c; 3 pkts., 60c.

6665 *Chinensis Blue*. Of dwarf habit with elegant fern-like foliage; flowers loosely paniced. Pkt., 10c; 3 pkts., 25c.

6670 *Chinensis White*. Like above, only white. Pkt., 10c; 3 pkts., 25c.

6680 *Nudicaule*. Bright orange-scarlet flowers in June and July. Seed difficult to germinate; extra care should be taken. Height, 3 feet. Pkt., 50c.

WE HAVE A FINE NEW ANNUAL CANTERBURY BELL. SEE PAGE 1.



**DELPHINIUM**

- 6695 **Zalil**. Long spikes of clear yellow, distinct sort among perennial Larkspurs. 1 to 2 feet high. Seed is difficult to germinate so care should be taken in planting. Blooms June to July. Pkt., 50c.
- 6685 **Rock's Gold Medal Hybrids**. The finest strain of mixed hybrids. The plants are of strong vigorous habit, with large flowers on spikes two feet and over, in a variety of color from the lightest blue to the deepest purple, the majority running in the lighter shades of blue. Pkt., 20c; 3 pkts., 50c.
- 6645 **Wrexham** (Hollyhock Delphinium). Most beautiful colors from lightest blues to deepest purples; giant size. Pkt., 50c; 3 pkts., \$1.35.

**DICTAMNUS (Gas Plant)**

Very showy for the hardy border; 2½ feet high, having fragrant foliage and spikes of very curious flowers, giving off on warm sultry evenings a fragrant volatile oil which ignites when a match is applied directly under the flower heads. Blooming in June and July.

- 6750 **Fraxinella, Pink**. Pkt., 15c.  
6755 **Fraxinella, White**. Pkt., 10c.  
6760 **Fraxinella, Mixed**. Pkt., 10c.

**DIANTHUS****(Hardy Garden Pinks)**

Adapted for either beds or borders, furnishing the most delightful cut flowers. Seed sown early will bloom the first season. A slight covering should be given during the winter.

- 6705 **Deltoides** (Maiden Pink). Delicate pink flowers with fine feathery foliage. Pkt., 25c.
- 6720 **Plumarius Semperflorens**. (Everblooming Hardy Garden Pink or Clove Pink). Sweet-scented double, semi-double and single flowers in great diversity of color. Pkt., 25c.
- 6725 **Rock's Choice Mixed**. Best varieties of Hardy Garden Pinks of the semi-double and double flowers in a variety of colors. Pkt., 25c.
- 6710 **Latifolius Atrococcineus Fl. Pl.** (Everblooming Hybrid Sweet William). A cross between an annual pink and Sweet William. In color an intense velvety crimson-scarlet. Pkt., 15c; 2 pkts., 25c.

**DIGITALIS or FOXGLOVE**

A hardy perennial, blooming the second year from seed. Grows usually about 3½ feet high, although in very rich soil sometimes 5 feet. The bell-shaped flowers are borne on long spikes in shades of purple, lavender, rose and white, all spotted lightly inside the blossom. Thrive best in cool, shady locations. Blooms June and July.

- GLOXINIAEFLORE**. This is a fine strain of the ordinary Foxglove *D. Puraea*, with handsome spotted Gloxinia-like flowers on long spikes.
- 6780 **Rose**. Pkt., 10c. 6775 **Purple**. Pkt., 10c.  
6785 **White**. Pkt., 10c. 6790 **Mixed**. Pkt., 10c.
- 6820 **Purpurea** (Common Foxglove). Old-fashioned type, mixed. Pkt., 10c.
- 6835 **The Shirley Mixed**. The most outstanding new hardy perennial we have had for several years. The plants grow 5 to 7 feet tall with flower spikes three to four feet long. The colors range from white to deep rose, blotched and spotted with dark maroon, crimson and chocolate. Pkt., 10c; 3 pkts., 25c.

**ECHINACEA (Coneflower)**

- 6850 **Purpurea** (Purple Coneflower). Large, reddish purple flowers, 4 inches in diameter, on long stems. Plants bloom nearly all summer and grow from 3 to 4 feet high. Beautiful for cutting. Pkt., 20c.

**EDELWEISS**

- 6870 **Gnaphalium Leontopodium**. This is the little flower so dearly sought by tourists in the Alps. It can be grown in most any garden soil. Does particularly well in rockeries and exposed situations. Blooms July and September. Height, 8 inches. Pkt., 35c.

**EUPATORIUM (Perennial Ageratum)**

Strong-growing, hardy perennials, well suited for naturalizing. They will grow and thrive in almost any situation; seed will flower the first year if sown early. Excellent for cutting.

- 6901 **Coelestinum**. A lovely shade of light blue. Fine as a cut flower. Height, 2 feet. September and October. Pkt., 25c.
- 6905 **Purpureum**. Beautiful flower heads, very similar to Ageratum, but pinkish-lavender in color with purple stems. Height, 2 feet. Blooming August to September. Pkt., 25c.

**GEUM (Avens)**

- 6925 **Atrosanguineum Fl. Pl.** Beautiful hardy perennial, bearing profusely large, showy, double, dark crimson flowers all through the summer; an elegant flower for bouquets. Pkt., 10c.
- 6930 **Mrs. Bradshaw**. Grows about two feet high. The double flowers, two inches in diameter, are of a deep, orange-scarlet color. Pkt., 20c.

**GYPSOPHILA (Baby's Breath)**

The delicate, mistlike sprays of the Gypsophila are invaluable for bouquets. They serve to lighten the effect of the masses of other flowers, and are especially useful with blooms that cannot readily be cut with their own foliage. They may be cut and dried for winter bouquets. Blooms June and July. 2 feet high.

- 6975 **Paniculata**. Easily grown and blooms the first season from seed. Single white flowers. Pkt., 10c; 3 pkts., 25c.
- 6980 **Paniculata Fl. Pl.** A double-flowering type of the above. Not more than 20 per cent come true double from seed, but the balance are excellent single types. Pkt., 25c.

**GALLARDIA (Blanket Flower)**

No flowers in the border are more showy among perennials for many weeks during the summer and autumn months or produce more bloom than the Gallardias.

- 6940 **Rock's Superb Hybrids**. A very large-flowering type, growing about 2 feet high and producing richly colored red and yellow flowers from June to frost. Pkt., 10c; 3 pkts., 25c.
- 6945 **Grandiflora Compacta**. A compact variety, forming bushy plants 12 to 15 inches high, and bearing its long-stemmed flowers well above the foliage. Beautiful shades of gold and red. Pkt., 10c; 3 pkts., 25c.
- 6950 **Portola Hybrids**. (New) New type of Gallardia. Plants are of compact, upright growth with heavy leathery foliage. The flowers are of very large size; the petals, broad and overlapping each other, rich shades of brilliant coppery scarlet color, each petal being heavily tipped or margined with golden yellow. Pkt., 20c; 3 pkts., 50c.

**HELIOPSIS (Orange Sunflower)**

- 7020 **Scabra Zinniaeflora**. A semi-double flowering variety, growing about 4 feet high, producing golden yellow flowers, resembling a Zinnia in form; June and July. Pkt., 20c.

**HELENIUM (Sneezewort)**

Strong-growing, hardy perennials, succeeding in any soil, and giving an enormous crop of Daisy-like flowers in late summer and fall.

- 7005 **Bigelowi**. Beautiful yellow; excellent for cutting. Pkt., 25c.
- 7010 **Riverton Gem**. Flowers are gold-colored when opening, changing to a wallflower red at maturity. Height, 2 to 3 feet. Pkt., 35c.

**HEUCHERA (Coralbells)**

- 7050 **Sanguinea Splendens**. Low-growing plants desirable for borders. Flowers bell-shaped, on long stems, blooming from May to September. The bright coral-red flowers are excellent for cutting. Pkt., 25c.

**HOLLYHOCKS**

We offer the celebrated Chater's English Double Hollyhocks, a prize strain saved from the finest collection of magnificent double flowers. Seed sown any time before mid-summer will produce fine plants for flowering the next year. Blooms July and August. Height, 5 to 7 feet.

**CHATER'S DOUBLE**

- |                          |                    |
|--------------------------|--------------------|
| 7060 <b>Crimson</b>      | 7085 <b>Yellow</b> |
| 7065 <b>Maroon</b>       | 7080 <b>White</b>  |
| 7075 <b>Rose</b>         | 7090 <b>Mixed</b>  |
| 7070 <b>Newport Pink</b> |                    |

Any of the above: Pkt., 15c; 3 pkts., 35c.

- 7088 **Collection**. 1 pkt. each of the above 6 colors, 65c.
- 7055 **Alameda Pink**. (New). A beautiful new hardy strain in various shades of pink. The flowers are semi-double and the edges prettily waved. Pkt., 15c.

- 7095 **Allegheny Mixed**. Semi-double flowers about 3 inches across. The petals are crinkled and fringed like crumpled and slashed satin. A mixture of soft, rich colors. Height, 6 to 7 feet. Pkt., 10c; 3 pkts., 25c.

**SINGLE VARIETIES**

These are probably more permanent and hardy than the double-flowering types and probably more picturesque.

- |                    |                          |
|--------------------|--------------------------|
| 7120 <b>Red</b>    | 7130 <b>Salmon</b>       |
| 7110 <b>Maroon</b> | 7140 <b>Yellow</b>       |
| 7125 <b>Rose</b>   | 7150 <b>Mixed Colors</b> |
| 7135 <b>White</b>  |                          |

Any of the above: Pkt., 15c; 3 pkts., 35c.







**PYRETHRUM**

Large daisy-like flowers in brilliant shades of red, pink and rose. Blooms mainly in May and June.

7605 **Golden Feather**. Fine, compact habit with bright, yellow foliage. Height, 9 inches. Pkt., 10c.

7610 **Roseum Hybridum**. Rose, white and pink-petaled flowers radiating from golden yellow centers. Height, 15 inches. Pkt., 15c.

7615 **Roseum Hybridum Fl. Pl.** About 50 per cent may be expected to come true double. Height, 15 inches. Mixed colors. Pkt., 35c.

**POLYANTHUS (Primula Elatior)**

Early spring, free-flowering plants, fine for either pot or outdoor culture.

7485 **Invincible Giant Mixed**. All colors from purest white to the richest crimson. Height, 10 inches. Pkt., 25c.

**RUDBECKIA (Coneflower)**

7635 **Newmanni**. The perennial form of the "Black-Eyed Susan." Deep orange-yellow, with a dark yellow cone; long, wiry stems, 3 feet high; blooms all summer. Pkt., 15c.

**Purpurea**. See Echinacea.

**SCABIOSA (Blue Bonnet)**

7662 **Caucasica Giant Hybrids (Isaac House Strain)**. The colors range from white to the darkest blue but shades of delicate lilac and mauve predominate. Pkt., 35c; 3 pkts., 85c.

7650 **Caucasica (Blue Bonnet)**. Large flowers are a soft lilac color and borne on long stems. Begin to bloom in June and continue throughout the season. If the seed is sown early they will bloom the first season. Grow 18 inches high. Pkt., 15c.

7655 **Caucasica Alba**. Pure white. Pkt., 30c.

**SEDUM (Stonecrop)**

7665 **Acre (Golden Moss)**. Blooms May and June. Seed should be sown in a flat box or pot and transplanted. Very dwarf, golden yellow flowers, bright green foliage. Height, 3 inches. Pkt., 25c.

**STATICE (Sea Lavender)**

Producing panicles of minute flowers, which can be dried and used for water bouquets. Seed slow in germinating, often taking 60 days.

7675 **Latifolia**. Dense panicles of lavender-blue flowers. Height, 18 inches. Pkt., 15c.

**SWEET ROCKET (Hesperis)**

Known as Dame's Rocket and Dame's Violet; grows from 2 to 3 feet high, and bears spikes of white and purple fragrant flowers. Will bloom the first year if sown early.

7705 **Finest Mixed Colors**. Pkt., 10c; 3 pkts., 25c.

**STOKESIA (Cornflower Aster)**

7685 **Cyanea**. Grows about 24 inches high, bearing from 20 to 30 handsome lavender-blue cornflower-like blossoms; in bloom from July till frost. Seed sown in February or March indoors and transplanted outside will bloom the same season. Pkt., 15c.

7690 **Cyanea Alba**. A pure white form. Pkt., 25c.

**TRITOMA (Red-hot Poker)**

7800 **Rock's Early Hybrid**. New, continuous-flowering Tritoma. It is not generally known that they are readily grown from seed; many flowering the first year if sown early. Pkt., 20c.

**SWEET WILLIAM (Dianthus Barbatius)**

Growing 1 to 2 feet high and bears its flowers in clusters at the end of a stiff stem. The individual flowers are colored and marked. Blooms from May through July. Seed sown in February and March will bloom the first year.

**SINGLE**

7740 **Holborn Glory**. Trusses of flowers of exceptional size, various colors. Pkt., 10c; 3 pkts., 25c.

7735 **Dark Crimson**. Very effective. Pkt., 10c; 3 pkts., 25c.

7755 **Pink Beauty (Newport Pink)**. A distinctive new pink. Pkt., 15c; 3 pkts., 35c.

7760 **Scarlet Beauty**. Rich, deep scarlet. Pkt., 15c; 3 pkts., 35c.

7765 **White**. Snow white. Pkt., 10c; 3 pkts., 25c.

7750 **Nigrescens**. Dark foliage and flowers deep dark red, nearly black. Pkt., 10c; 3 pkts., 25c.

7775 **Mixed Colors**. Pkt., 10c; 3 pkts., 25c.

7715 **DOUBLE MIXED COLORS**. Pkt., 10c; 3 pkts., 25c.

**VALERIANA (Garden Heliotrope)**

Produced from June to September. Height, 2 feet.

7815 **Coccinea**. Showy heads of scarlet flowers. Pkt., 10c.

**VERONICA (Speedwell)**

7840 **Spicata**. Long spikes of deep blue flowers from June to August. 2 feet. Pkt., 10c.

**VIOLA (Violet)**

Sowing should be made indoors in a shallow box or pot, covering lightly with rich pulverized soil. Keep moist at all times but never soaking.

7865 **Odorata Semperflorens**. The sweet-scented English violet. Blue. Pkt., 25c.

7860 **Odorata Alba**. Pure white. Pkt., 25c.

7870 **Odorata—The Czar**. Fragrant deep blue. The largest of all. Pkt., 35c.

**VIOLA CORNUTA (Tufted Pansies)**. See page 14.

**WALLFLOWER**

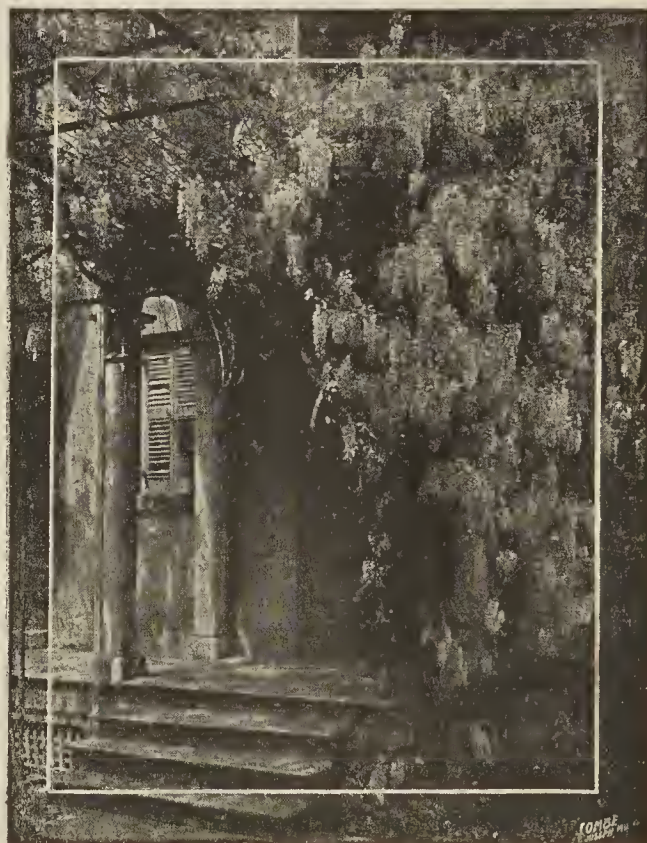
They produce fragrant flowers not unlike a Sweet William in form but entirely different in coloring which are for the most part shades of yellow, orange and rich browns.

7890 **New Siberian Wallflower**. Lovely orange-yellow flowers. 12 inches high. Blooms in May. Pkt., 15c.

7885 **Giant Double**. Mixed colors. Pkt., 30c.

**WISTERIA**

7900 **Sinensis**. Strong, rapid climber, blooms profusely. Light purple flowers are produced in long racemes. Seed very slow in germinating. Pkt., 10c.

**WISTERIA****RECORD AWARDS AT THE NATIONAL FLOWER SHOW**

We established a record at the Seventh National Flower show that will stand for years to come.

In this show we made 128 entries for national honors and won 121 awards. These included 92 blue ribbons for first prize, 25 second prizes, three gold medals, one silver medal, and in addition, Mr. Wm. L. Rock was presented "The Diploma of Honor," the highest and greatest award of any National Flower Show.

This record is one to be proud of, as it proves the high quality of Rock's goods. Be sure of the best—Order from Rock's.



# ROCK'S SELECT VEGETABLE SEEDS

## ARTICHOKES

1 ounce will sow 100 feet of drill, 6 ounces to the acre.

**Culture.**—The seed may be sown indoors and transplanted to the garden on approach of warm weather. Plants should be set in rows three feet apart and two feet apart in the row.

**3010 GREEN GLOBE FRENCH.** Flower heads green, nearly round; plant of perennial habit, producing the second year from seed. Pkt., 15c; oz., 85c.

## ASPARAGUS

1 ounce will sow 40 feet of drill, 3 pounds to the acre.

**Culture.**—Permanent beds should be prepared by deep plowing or spading and thoroughly enriching the ground with stable manure or other fertilizer. Before planting, pour warm water on the seed and allow it to stand until cool, pour it off and repeat two or three times with fresh warm water. Sow in spring in drills about eighteen inches apart and two inches deep, planting fifteen or twenty seeds to each foot of row. When the plants are well up, thin to about one inch apart.

**8035 MARY WASHINGTON.** The stalks are thick, straight, long, and of dark green color. Tips closely folded. Pkt., 15c; oz., 30c;  $\frac{1}{4}$  lb., 90c.

## BEANS, Dwarf or Bush

One pound will plant 50 feet of drill.

A light, rich, well drained loam which was manured for the previous crop is the most desirable. Do not use fresh manure.

**Culture.**—Plant in drills  $1\frac{1}{2}$  to 2 feet apart;  $1\frac{1}{2}$  to 2 inches deep and thin the young plants 3 to 6 inches apart in the row. If planted in hills plant 2 ft. apart each way. For succession, plant at intervals of two weeks until midsummer, or make a careful selection of the varieties, early, medium and late in their succession.

## GREEN PODDED VARIETIES

**3050 ROCK'S IMPROVED BOUNTIFUL.** Best of the flat-podded stringless varieties. Pods 6 to 7 inches long, stout, flat and curved, stringless; color, light green.  $\frac{1}{2}$  lb., 30c; 1 lb., 50c; 2 lbs., 90c; 10 lbs., \$4.00.

**3055 BLACK VALENTINE.** An early round-podded variety about 6 inches long, dark green in color.  $\frac{1}{2}$  lb., 25c; 1 lb., 45c; 2 lbs., 80c; 10 lbs., \$3.50.

**3060 BURPEE'S IMPROVED STRINGLESS GREEN POD.** Pods large, 5 inches long, stout, round, stringless.  $\frac{1}{2}$  lb., 30c; 1 lb., 50c; 2 lbs., 90c; 10 lbs., \$4.00.

**3065 FULL MEASURE.** Pods straight, 6 inches long, fleshy, round, stringless, early, medium green.  $\frac{1}{2}$  lb., 30c; 1 lb., 50c; 2 lbs., 90c; 10 lbs., \$4.00.

**3070 GIANT STRINGLESS GREEN-POD.** Similar to Burpee's Improved Stringless, a little longer, straight and more slender, early, hardy.  $\frac{1}{2}$  lb., 25c; 1 lb., 45c; 2 lbs., 80c; 10 lbs., \$3.50.

**3080 IMPROVED EARLY RED VALENTINE.** Pods  $4\frac{1}{2}$  inches long, round and crease-backed, medium green, hardy, early and productive sort.  $\frac{1}{2}$  lb., 25c; 1 lb., 45c; 2 lbs., 80c; 10 lbs., \$3.50.

## DWARF WAX or YELLOW PODDED BEANS

One pound will plant 50 feet of drill.

**8110 NEW KIDNEY WAX.** Very productive, stringless and fibreless, fleshy and brittle. Pods 6 inches long, yellow color; midseason.  $\frac{1}{2}$  lb., 25c; 1 lb., 45c; 2 lbs., 80c; 10 lbs., \$3.50.

**8105 IMPROVED GOLDEN WAX.** Ready for picking 7 weeks after planting; long, straight, fleshy, tender pods, stringless. Rust-resistant.  $\frac{1}{2}$  lb., 25c; 1 lb., 45c; 2 lbs., 80c; 10 lbs., \$3.50.

**8115 PENCIL POD BLACK WAX.** Early and productive, pods  $6\frac{1}{2}$  to 7 inches long, round, straight stringless, free from fibre, fleshy and brittle; color, clear yellow.  $\frac{1}{2}$  lb., 25c; 1 lb., 45c; 2 lbs., 80c; 10 lbs., \$3.50.

**8130 WARDWELL'S KIDNEY WAX.** For hot dry climates. Pods are 7 inches long, flat, straight, brittle and stringless; yellow color and productive.  $\frac{1}{2}$  lb., 25c; 1 lb., 45c; 2 lbs., 80c; 10 lbs., \$3.50.

## DWARF LIMA BEANS

One pound will plant 50 feet of drill.

**8155 FORDHOOK BUSH.** Height 15 to 20 inches, very prolific. Plants strong and vigorous and produce beans 5 inches long.  $\frac{1}{2}$  lb., 30c; 1 lb., 55c; 2 lbs., \$1.00; 10 lbs., \$4.00.

**8150 IMPROVED BURPEE'S.** Enormously productive.  $\frac{1}{2}$  lb., 30c; 1 lb., 55c; 2 lbs., \$1.00; 10 lbs., \$4.00.

**8160 HENDERSON'S BUSH.** Beans are small. Pods short, flat and contain three to five beans. A popular canning variety.  $\frac{1}{2}$  lb., 25c; 1 lb., 45c; 2 lbs., 80c; 10 lbs., \$3.50.

## SHELL BEANS

**8180 NEW ROBUST PEA.** A new shell bean, very productive and rust-resistant.  $\frac{1}{2}$  lb., 20c; 1 lb., 35c; 2 lbs., 60c; 10 lbs., \$2.50.

## POLE BEANS

One pound will plant 50 poles.

**Culture.**—After settled warm weather, set poles four to eight feet long in rows four feet apart, the poles being three feet apart in the row. Around each stake plant five to seven beans one and one-half to two inches deep. When well started thin to four plants.

**8210 KENTUCKY WONDER, or OLD HOMESTEAD.** Green-podded climbing, or corn-hill bean; early and very productive. Pods 8 to 9 inches long, very slender, curved, tender.  $\frac{1}{2}$  lb., 25c; 1 lb., 45c; 2 lbs., 80c; 10 lbs., \$3.00.

**8215 KENTUCKY WONDER WAX.** Pods 8 to 9 inches long, thick, very fleshy, brittle; color, light yellow. One of the earliest of the pole wax sorts.  $\frac{1}{2}$  lb., 30c; 1 lb., 55c; 2 lbs., \$1.00; 10 lbs., \$4.50.

**8205 BURGER'S GREEN POD, or WHITE KENTUCKY WONDER.** Early, white-seeded variety. Pods 6 to 7 inches long, round, slender and straight; tender, fleshy and stringless; color dark green.  $\frac{1}{2}$  lb., 30c; 1 lb., 55c; 2 lbs., \$1.00; 10 lbs., \$4.50.

**8220 SCARLET RUNNER.** Often used in place of the Lima. It is a rapid and tall grower.  $\frac{1}{2}$  lb., 30c; 1 lb., 55c; 2 lbs., \$1.00; 10 lbs., \$4.50.

## POLE LIMA BEANS

One pound will plant 40 poles.

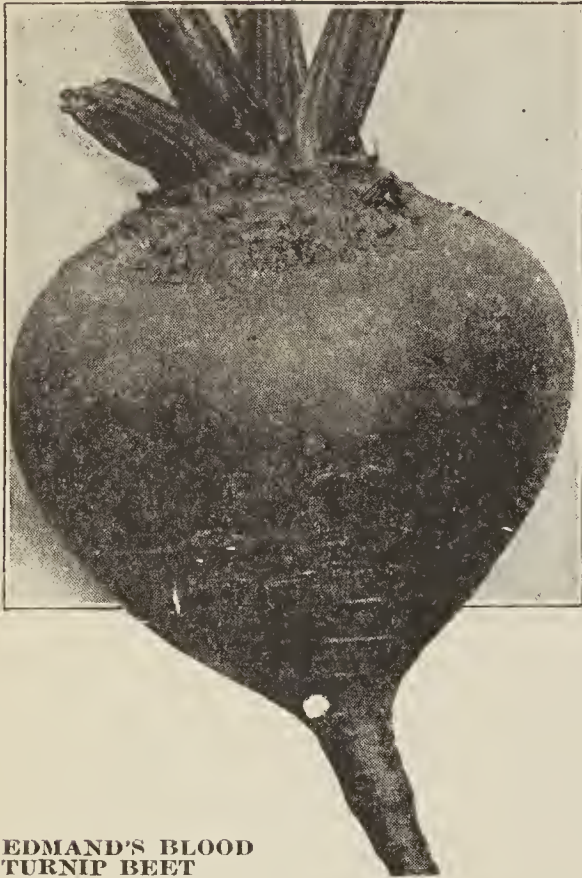
**8240 GIANT PODDED.** Largest of all. In earliness, ease of shelling, size, this variety is unexcelled; pods are large and well filled with beans.  $\frac{1}{2}$  lb., 30c; 1 lb., 55c; 2 lbs., \$1.00; 10 lbs., \$4.50.

**8250 EARLY LEVIATHAN.** Early, large-podded variety. Pods 5 to 6 inches long, similar to Giant Podded.  $\frac{1}{2}$  lb., 25c; 1 lb., 40c; 2 lbs., 75c; 10 lbs., \$3.50.



KENTUCKY WONDER





EDMAND'S BLOOD  
TURNIP BEET

## BEETS

One ounce will sow 50 feet of drill, 5 to 6 pounds for an acre.

**Culture.**—Soil, rather light and thoroughly enriched with manure. For early sow in spring, as soon as the ground becomes fit to work, in drills about 18 inches apart and 1 inch deep. Thin to 3 or 4 inches apart in rows. For main crop, sow the first week in May, and for winter use sow in July.

**8270 ROCK'S SELECTED DETROIT DARK RED.** Roots smooth, of medium size and globe-shaped; skin dark red; flesh solid vermilion-red. Tops are small, upright, dark green, shaded red. Rock's special stock shows no white zones. Pkt., 10c; oz., 20c;  $\frac{1}{4}$  lb., 50c; lb., \$1.75.

**8625 CROSBY'S EGYPTIAN.** Extremely early. Tops are small; roots are a flattened globe shape and smooth. Flesh is deep red, sweet and tender. Pkt., 10c; oz., 20c;  $\frac{1}{4}$  lb., 50c; lb., \$1.75.

**8275 EARLY WONDER.** Early variety. Globe-shaped and uniform in size; skin smooth, and flesh a deep blood-red and tender. Pkt., 10c; oz., 20c;  $\frac{1}{4}$  lb., 60c; lb., \$1.90.

**8280 Eclipse.** Early, with small tops and medium sized, round, bright red roots; flesh is bright red. Pkt., 10c; oz., 15c;  $\frac{1}{4}$  lb., 35c; lb., \$1.00.

**8285 EDMAND'S BLOOD TURNIP.** A round form, smooth. Pkt., 10c; oz., 15c;  $\frac{1}{4}$  lb., 40c; lb., \$1.25.

**8290 EXTRA EARLY EGYPTIAN.** One of the earliest and best for forcing; small tops; roots are flat and moderately thick; the flesh is dark, purplish red color, zoned a lighter shade. Pkt., 10c; oz., 15c;  $\frac{1}{4}$  lb., 35c; lb., \$1.00.

## SUGAR BEETS

**8320 KLEIN'S WANZLEBEN.** This variety is the best in cultivation, not the largest, but most productive. Oz., 10c;  $\frac{1}{4}$  lb., 30c; lb., 85c.

## MANGEL WURZEL

One ounce will sow 100 feet of drill, 5 pounds to the acre.

**8330 GOLDEN TANKARD.** A large smooth, orange-yellow type. Oz., 10c;  $\frac{1}{4}$  lb., 25c; lb., 75c; 10 lbs., \$6.00 by express.

**8335 LONG RED MAMMOTH PRIZE (Norbiton Giant).** Enormous size. Roots nearly cylindrical in shape, light red, growing well above ground; flesh white and rose-colored. Oz., 10c;  $\frac{1}{4}$  lb., 25c; lb., 75c; 10 lbs., \$6.50 by express.

## SWISS CHARD

One ounce will sow 50 feet of drill, 6 pounds to the acre.

The leaves make excellent green if cooked like spinach; mid-ribs may be cooked and served like asparagus. Sow early in spring in rows 18 inches apart and thin to 6 inches apart in rows.

**8310 ROCK'S PERPETUAL SUMMER.** More tender than spinach; large dark green leaves growing close to the ground, although erect. Large white mid-ribs, very tender. Pkt., 15c; oz., 35c;  $\frac{1}{4}$  lb., \$1.00.

**8305 GIANT LUCULLUS.** Improved type. Upright growth, leaves dark green, crumpled and curled; mid-rib and veins white; stalks thick, broad and flat. Pkt., 10c; oz., 25c;  $\frac{1}{4}$  lb., 50c; lb., \$1.50.

## BROCCOLI

One ounce will sow 300 feet of drill.

Resembles the cauliflower. Succeeds best in deep rich, moist soil. Seed should be sown and receive the same general culture as cabbage.

**8344 Italian Green Sprouting.** Heads compact, good size and of a greenish color; the most certain to head. Pkt., 10c; oz., 75c.

## BRUSSELS SPROUTS

One ounce of seed will sow 300 feet of drill.

It affords fresh green sprouts in the late fall and winter when other vegetables are gone. It is planted and cultivated as cabbage. The sprouts that grow along the stem are picked off and cooked like cabbage and are very delicately flavored.

**8360 DANISH PRIZE.** Height 2 feet. Sprouts closely set,  $1\frac{1}{2}$  inches in diameter, firm and well rounded. Very productive. Pkt., 10c; oz., 25c;  $\frac{1}{4}$  lb., 75c.

## CABBAGE

One ounce will sow 300 feet of drill, 4 ounces for acre.

**Culture.**—Soil for cabbage should be a rich, heavy loam, with good drainage. For early summer use, sow in hotbed in February or March. Before transplanting to the open ground, they should be hardened off by exposing them gradually to the night air. For winter use, sow in open ground in May or June, taking care in either case not to let the plants stand too closely, as this makes them "spindly." When 5 to 7 inches high, transplant in rows 2 feet apart one way and 12 to 18 inches the other, according to variety.

**8395 IMPROVED EXTRA EARLY JERSEY WAKEFIELD.** Surest heading of the first early cabbages. Exceedingly hardy. Heads of medium size, solid, uniformly pointed. Pkt., 10c; oz., 35c;  $\frac{1}{4}$  lb., \$1.00.

**8370 COPENHAGEN MARKET.** Heads are solid, compact, there being few outside leaves. Matures almost as early as Jersey Wakefield. All heads mature at the same time. Early variety. Pkt., 10c; oz., 60c;  $\frac{1}{4}$  lb., \$1.75.

**8400 LATE FLAT DUTCH.** The heads are large, solid and very heavy and uniform. Pkt., 10c; oz., 30c;  $\frac{1}{4}$  lb., \$1.00.

**8405 RED ROCK.** The largest and surest heading red cabbage. Very deeply colored at the heart; medium to long stem. Pkt., 10c; oz., 40c;  $\frac{1}{4}$  lb., \$1.35.

**8385 PERFECTION DRUMHEAD SAVOY.** The best winter keeper of the Savoys; heads late, round, large, with crisp, wrinkled leaves; dark green in color. Pkt., 10c; oz., 40c;  $\frac{1}{4}$  lb., \$1.15.

**8410 WISCONSIN ALL SEASONS.** An early medium sized type, selected for resistance to common disease known as "the yellows." The heads are medium size and somewhat flattened and heavy. Pkt., 15c; oz., 75c;  $\frac{1}{4}$  lb., \$2.00.

## CHINESE CABBAGE

**8420 PE-TSAL.** Known as celery cabbage. Does not head up solid, makes a loose roll of leaves; tender and white, differs in flavor from our cabbages. The stems are thick and brittle like celery. It is better blanched

**8425 WONG BOK.** Heads of this type are broader than the Pe-Tsai and leaves fold tighter, making a more compact plant. The leaves are light green in color with broad white ribs. The entire plant may be blanched pure white by covering with heavy paper or burlap. Pkt., 10c; oz., 50c;  $\frac{1}{4}$  lb., \$1.50.



## CAULIFLOWER

One ounce of seed will sow 300 feet of drill, 4 ounces to the acre.

**Culture.**—The same as cabbage. Plants should be transplanted not later than April. Pin or tie the leaves together as soon as the flower head begins to form.

**8450 EXTRA SELECTED EARLY SNOWBALL.** Heads early, of medium size, firm, compact, solid, and very white; compact in growth, with few short, upright leaves. Early variety. Pkt., 25c; ¼ oz., 80c.

**8440 BEST EARLY.** For either cold frame, or open ground culture. Pkt., 25c; ¼ oz., 80c.

**8445 DRY WEATHER (Danish Giant).** Adapted for growing in dry location. Heads are large, pure, snowy white. Pkt., 25c; ¼ oz., \$1.00.

**8435 AUTUMN GIANT.** Late variety; heads large, firm, very white and well protected by large, dark green foliage. Best of its kind. Pkt., 10c; ½ oz., 35c; oz., 65c.

## CARROTS

One ounce will sow 150 feet of drill, 2 pounds required for an acre.

**Culture.**—Carrots require fine, pulverized soil. Sow in drills 18 inches apart and cultivate by hand. For early crops cover ½-inch deep and thin to 4 inches apart in the rows. For late crop, cover ¾-inch deep.

**8460 CHANTENAY HALF LONG.** Medium early carrots. About 6 inches long, stump rooted, very smooth, deep orange, fine-grained, sweet; productive; well adapted for winter use. Pkt., 10c; oz., 20c; ¼ lb., 50c.

**8470 EARLY FRENCH FORCING.** Earliest of all; 2½ inches long. Orange-red in color, crisp and almost without a core. Remarkably small top and can be planted very close in frame. Does well for early outdoor planting. Pkt., 10c; oz., 20c; ¼ lb., 50c.

**8465 DANVERS HALF LONG.** Adapted to all soils and enormously productive. Roots 6 to 8 inches long, tapering to a blunt point; flesh deep orange, tender and good quality; the best known second early, half-long sort. Also an exceptionally fine variety for winter storage if sown early in June. Pkt., 10c; oz., 20c; ¼ lb., 50c.

**8480 IMPROVED LONG ORANGE.** Handsome, smooth roots. An excellent intermediate season, standard sort; root 12 inches long, about 3 inches broad at the crown, tapering regularly to a point; deep orange color. Pkt., 10c; oz., 15c; ¼ lb., 40c.

**8485 OX HEART OR GUERANDE.** Especially desirable for soil so hard and stiff that long-rooted sorts would not thrive in it. The root is short, very thick, and a small tap root; flesh bright orange; fine-grained and of sweet flavor. 4½ to 5 inches long. Pkt., 10c; oz., 15c; ¼ lb., 40c.

## CELERY

One ounce will sow 300 feet of drill, 3 ounces to the acre.

**Culture.**—Plenty of manure and complete fertilizers, moisture and cultivation. For early planting sow seed in frames; when 3 inches high transplant 4 inches apart water and protect until well rooted, then transplant into rows 15 inches apart; set the plants from 8 to 12 inches apart. To blanch, draw earth around the plants, being careful not to cover the tops of the center shoots.

**8500 ROCK'S EASY BLANCHING.** Combination of easy blanching and long-keeping qualities—make it the most valuable of all Celeries, both for an early crop and for winter use. The stalks are large, thick and solid with shallow ribs and large, firm hearts. Blanches a pure white. Pkt., 10c; oz., 65c; ¼ lb., \$2.25.

**8505 DWARF GOLDEN SELF-BLANCHING.** Early, compact and stocky, with yellow-green foliage; stalks perfectly solid, of a fine flavor, and when blanched is of a rich golden-yellow color. Pkt., 20c; oz., \$1.25; ¼ lb., \$4.50.

**8510 GIANT PASCAL.** A compact, productive variety; leaves upright, short and dark green; stalks short, thick and very broad; blanches a creamy white. Pkt., 10c; oz., 35c; ¼ lb., \$1.25.

**8515 SOUP CELERY.** (Seeds used for flavoring). Green foliage used for soups. Pkt., 10c; oz., 25c.

## CELERIAC

## OR TURNIP ROOTED CELERY

One ounce will sow 100 feet of drill.

**Culture.**—May be sown in the open ground in April and the young plants nursed in the same way as celery, but in planting out, the ground is manured and dug, not trenched, plants are set in shallow drills 12 inches apart.

**8550 LARGE SMOOTH PRAGUE.** Turnip-shaped roots, attaining 3 inches in diameter, white-fleshed, comparatively tender. Pkt., 10c; oz., 40c; ¼ lb., \$1.35.

## CORN SALAD

One ounce will plant 40 feet of drill.

Used as a salad. Sow either in spring or fall. If sown in August, should be given protection during the winter, a mulch of straw or leaves.

**8665 LARGE GREEN.** A distinct sort, with short, rounded, smooth, almost erect, green leaves, forming a compact rosette. Pkt., 10c; oz., 20c; ¼ lb., 60c.

## CRESS

½ ounce will plant 100 feet of drill.

Sow early in the spring in shallow drills and at short intervals, for succession, as it soon runs to seed.

**8715 EXTRA CURLED (Peppergrass).** A small curled plant, having a fine, pungent flavor and used as a salad. Pkt., 10c; oz., 15c; ¼ lb., 45c.

**8720 SWEET WATER CRESS (True).** For growing in moist positions, where the roots may be submerged in water. Pkt., 15c; ½ oz., 30c; oz., 50c.

## CUCUMBER

One ounce will plant 50 hills.

**Culture.**—For earliest use, sow the seed in the hotbed or greenhouse in February or March, in warm loam where the temperature is about 90 degrees, cover ½-inch deep, and when the plants are of fair size, transplant in hills, 4 plants in a hill, in the open ground, about June 1st, in hills 6 feet apart each way and thin to 4 plants to a hill.

**8675 EARLY FORTUNE.** Early White Spine Cucumber. Fruits large, usually 8 to 10 inches in length, nearly cylindrical in form, slightly pointed at the ends, very smooth, straight and of rich dark green color. Flesh white, fine grained, solid, and setting on fruit quite early and bearing continuously until frost. Pkt., 10c; oz., 25c; ¼ lb., 60c.

**8692 LONGFELLOW.** (New). Dark green Cucumber growing uniformly straight, 12 to 14 inches in length. White, firm flesh and very crisp. Pkt., 15c; oz., 35c.

**8680 EARLIEST OF ALL.** An extra early prolific, White Spine. Fruit full and uniform, tapering slightly but abruptly at both ends; color deep green. A week to ten days earlier than Early Fortune. 7x2½ inches. Pkt., 10c; oz., 20c; ¼ lb., 60c.

**8685 FORDHOOK FAMOUS.** Largest of the White Spine family; fruit long, thick and tapering at both ends, crisp and solid; color, light green. 14x3½ inches. Pkt., 15c; oz., 35c; ¼ lb., 95c.

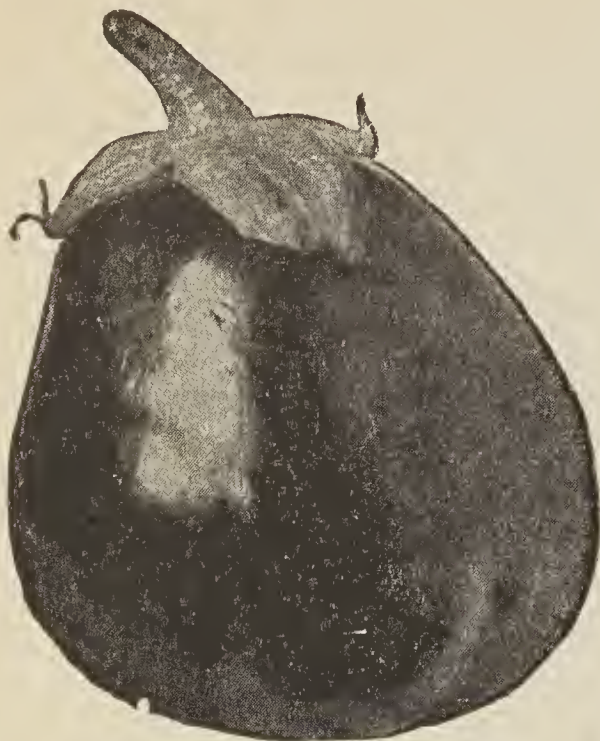
**8690 IMPROVED LONG GREEN.** 12 to 14 inches long, slender, more or less warted, tapering towards the stem end; color dark green, flesh white and firm. A late sort. Pkt., 10c; oz., 25c; ¼ lb., 75c.

**8695 PERFECTED PICKLE.** The best formed and productive pickling sort; early, small, square-ended and dark green. 5x2¼ inches. Pkt., 10c; oz., 20c; ¼ lb., 50c.



EARLIEST OF ALL CUCUMBERS





BLACK BEAUTY EGG PLANT

## EGGPLANT

One ounce will sow 300 feet of drill, 4 ounces to the acre.

**Culture.**—Seeds should be sown in hotbed or warm greenhouse in March or April, and when about an inch high, potted in 2-inch pots. Plant out about June 1st, 2½ feet apart. If no hotbed is at hand, they can be grown in any light room where the temperature will average 75 degrees.

**8745 NEW YORK IMPROVED PURPLE.** Plants produce from 4 to 6 fruits which are very large, pear-shaped, with smooth, deep purple skin, and nearly white flesh. It is spineless. Pkt., 10c; ½ oz., 30c; oz., 50c; ¼ lb., \$1.60.

**8740 BLACK BEAUTY.** Fruit dark purple, retaining its original color. Earlier and nearly as large as New York Purple. Pkt., 10c; ½ oz., 40c; oz., 65c; ¼ lb., \$2.25.

## SWEET CORN

1 pound will plant 400 feet of row.

**Culture.**—Commence planting the early varieties about May 1st, make plantings about two weeks apart from May until the last of July, first planting early varieties, then later ones. Plant in rows 2 to 3 feet apart spacing the kernels 3 to 4 inches apart in the row. Cover about 1 inch deep for early and a little deeper for late.

## EARLY VARIETIES

**8580 ROCK'S SELECTED GOLDEN BANTAM.** Can be planted earlier than other varieties. Golden Bantam has a distinct quality, many preferring it to all other varieties. The stalks grow from 3½ to 4 feet in height and produce two or more good ears, which are 6 to 7 inches long, 8-rowed, and of a bright golden-yellow color, exceedingly sweet. Pkt., 10c; ½ lb., 25c; lb., 40c; 2 lbs., 75c; 10 lbs., \$2.95.

**8585 MAMMOTH WHITE COBY.** The earliest of all sweet corn. Ears 10 to 12-rowed, 7 to 8 inches long, fairly sweet, tender and white. Stalks about 4 feet high, producing two large ears on each stalk. Pkt., 10c; ½ lb., 25c; lb., 40c; 2 lbs., 65c; 10 lbs., \$2.75.

## SECOND EARLY VARIETIES

**8600 ROCK'S BANTAM EVERGREEN.** A cross between Golden Bantam and Evergreen. It is ready for the table about five days after Golden Bantam. Stalks 6 to 7 feet high, bearing two or more ears 8 inches long, bright golden-yellow color. Pkt., 10c; ½ lb., 25c; lb., 40c; 2 lbs., 75c; 10 lbs., \$2.95.

**8605 BLACK MEXICAN.** Matures medium early, ears of medium size; eight-rowed. To appreciate the full value of this variety, pick before kernels turn entirely black. Pkt., 10c; ½ lb., 25c; lb., 45c; 2 lbs., 80c; 10 lbs., \$3.25.

## MAIN CROP VARIETIES

**8630 COUNTRY GENTLEMAN.** A small cob, white grains, exceedingly sweet. Ears are seven to eight inches long. The stalks from six and one-half to seven feet high. The best of the late varieties. Pkt., 10c; ½ lb., 25c; lb., 40c; 2 lbs., 75c; 10 lbs., \$2.95.

**8635 STOWELL'S EVERGREEN.** Planted for late use. Ears 8 to 9 inches long. 16 to 18-rowed with a very deep sweet grain. This variety is selected from deep-grained, small-cobbed and high quality stocks. Pkt., 10c; ½ lb., 25c; lb., 40c; 2 lbs., 75c; 10 lbs., \$2.95.

## ENDIVE

One ounce will sow 350 feet of drill.

**Culture.**—Sow in the spring as soon as the earth is free from frost. Drill in rows 2 feet apart and thin the plants to 8 inches apart. Tie up the loose leaves or cover with pots to blanch for salad.

**8755 BROAD LEAVED BATAVIAN.** Leaves broad, more or less twisted and waved, bright green with a nearly white mid-rib. Inner leaves form a fair head which blanches a creamy-white. Pkt., 10c; oz., 20c; ¼ lb., 60c.

**8765 WHITE CURLED (Self Blanching).** The outer mid-ribs usually show a trace of rose. Leaves need no blanching. Pkt., 10c; oz., 20c; ¼ lb., 60c.

## KALE or BORECOLE

One ounce will sow 200 feet of drill, 3 pounds to the acre.

**Culture.**—Sow about the middle of March in hotbeds; transplant in May and treat the same as cabbage. For outdoor planting, drill in rows 2 feet apart and thin out to 12 inches in the row.

**8815 DWARF CURLED SCOTCH.** Foliage long and bright green; very hardy; finely curled, dwarf spreading variety. Pkt., 10c; oz., 15c; ¼ lb., 45c.

**8820 TALL CURLED SCOTCH.** Grows 2 to 3 feet, bearing long, plume-like leaves deeply curled at the edges. Pkt., 10c; oz., 15c; ¼ lb., 45c.

## KOHL-RABI



One ounce will sow 300 feet of drill.

**Culture.**—Should be sown in 2 to 3-foot rows about the 15th of April and plants thinned out to 8 inches apart in rows.

**8830 EARLY WHITE VIENNA.** A very early variety with small tops. The bulbs are of medium size, nearly white. Pkt., 10c; oz., 30c; ¼ lb., 95c.

**8835 PURPLE VIENNA.** A little later than the White; color, bluish purple. Pkt., 10c; oz., 30c; ¼ lb., 95c.

## LEEK

One ounce will sow 100 feet of drill, 4 pounds to the acre.

**Culture.**—Sow early in spring in rich soil ¼ inch deep in drills 1 foot apart. When 6 inches high, transplant in rows 10 inches apart each way as deep as possible, so that the neck, being covered, may be blanched.

**8850 LONDON FLAG.** The oldest and best known variety; hardy and productive. Pkt., 10c; oz., 25c; ¼ lb., 75c.





WAYAHEAD LETTUCE

## LETTUCE

One ounce is sufficient for 100 feet of drill, 3 pounds per acre.

**Culture.**—Sow in drills 18 inches apart, covering about one-half inch deep. Plant the seed at intervals of two weeks. Head lettuce should be used for early and late plantings and leaf lettuce for midsummer. For very early crop, sow seed in hotbed in March and transplant in open ground April 15th.

**8900 WAYAHEAD.** A very early, compact, sure-heading variety; the outer leaves are medium light green, crumpled and blistered; the inner head blanches a rich buttery yellow. Pkt., 10c; oz., 25c; ¼ lb., 75c.

**3885 GRAND RAPIDS.** Earliest of all lettuce. A variety for forcing as well as open-ground culture. The plant is upright and forms a loose cluster of large, bright green leaves, savoyed, finely crumpled at edges. The leaves are tender, crisp, sweet; not liable to rot. Pkt., 10c; ½ oz., 20c; oz., 35c; ¼ lb., 95c.

**3860 BIG BOSTON.** Head large and compact; leaves broad, almost smooth, but wavy at the edge; color, light green, slightly tinged reddish brown; heart greenish white, tinged yellow; tender and sweet. Pkt., 10c; oz., 25c; ¼ lb., 65c.

**3897 MIGNONETTE.** Type of head lettuce for growing in warm climates. The heads are solid, crisp, very small and of delicious flavor. Pkt., 10c; oz., 25c; ¼ lb., 75c.

**3865 MAMMOTH BLACK-SEEDED BUTTER.** Leaves broad, fairly crumpled and blistered; color medium green; quality excellent. Heads firm, large and oval-shaped. Pkt., 10c; oz., 25c; ¼ lb., 75c.

**3890 ICEBERG.** A late, crisp variety; leaves unusually broad, blistered and crumpled, borders finely frilled; color medium green with faint brown tracing on the border. Pkt., 10c; oz., 25c; ¼ lb., 75c.

**3870 BLACK-SEEDED SIMPSON.** Leaves broad, blistered and crumpled, and frilled on the borders; color light yellowish green. Pkt., 10c; oz., 25c; ¼ lb., 75c.

**3905 WONDERFUL.** Late, cabbage-heading, with large, crumpled, dark green leaves. Pkt., 10c; oz., 25c; ¼ lb., 75c.

## COS or ROMAINE LETTUCE

**8915 TRIANON COS.** With long spoon-shaped leaves folding into loose head, blanching readily. Crisp and of mild, sweet flavor. Pkt., 10c; oz., 25c; ¼ lb., 75c.

## MUSTARD

One ounce will sow 40 feet of drill.

Sow the seed in drills early in the spring and at frequent intervals throughout the summer to secure a constant supply of fresh greens.

**8930 SOUTHERN GIANT CURLED.** Seed small, dark reddish brown. Plant vigorous and hardy, of upright, spreading growth; leaves large, light green, tinted yellow, crumpled and frilled at the edges. Pkt., 10c; oz., 15c; ¼ lb., 40c.

## OKRA or GUMBO

One ounce will sow 75 feet of drill.

Used for flavoring soups. The pods contain a large amount of gum, which imparts a thickness and softness as well as flavor to the soup.

**Culture.**—Sow in the open ground when the ground is thoroughly warm. In this latitude about the 15th of May. Sow in rows 2½ feet apart and thin the plants to 18 inches apart. The pods should be picked while green and dried.

**8945 PERKINS' MAMMOTH.** Pods are of deep green color, very prolific. Long and somewhat ribbed or corrugated. Pkt., 10c; oz., 15c; ¼ lb., 35c.

## MUSKMELONS

One ounce will plant about 50 hills, 2 to 3 pounds per acre.

**Culture.**—Select a rich soil, and after danger of frost is over, and the ground has become warm and dry, plant in hills 4 to 6 feet each way, and 6 seeds in a hill. Thin out to 4 plants. Cultivate until the vines cover the ground and pinch off the ends of the growing vines to induce early fruiting. Wood ashes, lime or tobacco dust, sifted over young plants when the dew is on, is something effective to prevent the attack of insects.

**8995 POLLOCK'S No. 25.** The best of all the Rocky Ford Cantaloupes; rust-resisting. Flesh is salmon-tinted, of delightfully rich, aromatic flavor. Pkt., 10c; oz., 20c; ¼ lb., 60c; lb., \$2.00.

**8975 HONEY DEW.** The average size of the melon is 6 inches in diameter and about 8 inches in length, weight five to six pounds. The skin is smooth and is a creamy yellow when ripe. The flesh is light green, very thick, fine-grained and sweet. Pkt., 10c; oz., 20c; ¼ lb., 60c; lb., \$2.00.

**8960 BURREL'S GEM.** Flesh thick and firm, salmon colored, being sweet and of the finest flavor. The melons are oblong, averaging 6 inches long; skin dark green with brown netting. Pkt., 10c; oz., 25c; ¼ lb., 60c; lb., \$2.00.

**8980 HOODOO (Hearts of Gold).** An orange-fleshed, round melon, finely netted, medium size. Flesh is thick, firm, of fine texture and delicious flavor. Pkt., 10c; oz., 25c; ¼ lb., 75c; lb., \$2.50.

**9000 ROCKY FORD.** Fruit is small, almost round, smooth, showing no ribs, and densely covered with a heavy, hard gray netting; flesh thick and deep green, showing a faint lining of pink or gold at the center. Pkt., 10c; oz., 20c; ¼ lb., 50c; lb., \$1.50.



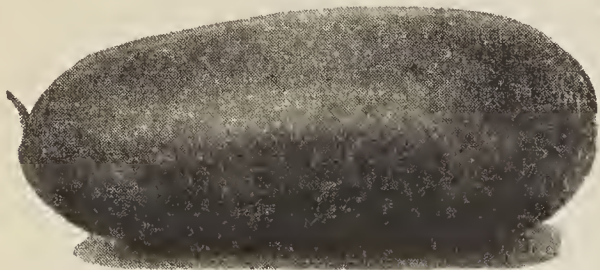
ROCKY FORD CANTALOUPE



## WATERMELONS

One ounce for 30 hills; 4 to 5 pounds for an acre.

**Culture.**—Select a rich soil, and after danger of frost is over, and the ground has become warm and dry, plant in hills 4 to 6 feet each way, and 6 seeds in a hill. When up, thin out to 4 plants. Cultivate until the vines cover the ground and pinch off the end of the growing vines to induce early fruiting. Wood ashes, lime or tobacco dust, sifted over young plants when the dew is on, is sometimes effective to prevent the attack of insects.



**TOM WATSON WATERMELON**

**9690 ROCK'S PERFECTED TOM WATSON.** The very best of the long melons for either home or market garden. The melons will grow to a length of 2 to 3 feet and 1 foot in diameter. The rind is hard, lightly mottled green, thin. The flesh is deep red and comes very close to the rind. Pkt., 10c; oz., 20c; ¼ lb., 55c; lb., \$1.65.

**9660 COLE'S EARLY.** Of the medium size. Very early. Nearly round in shape; rind green, striped with lighter shades. Flesh deep pink, sweet. Pkt., 10c; oz., 15c; ¼ lb., 45c; lb., \$1.50.

**9680 HALBERT HONEY.** Eighteen to twenty inches long and are full rounded at both ends. The skin is a dark glossy green. Flesh is crimson and very sweet; thin rind. Pkt., 10c; oz., 20c; ¼ lb., 45c; lb., \$1.50.

**9685 KLECKLEY'S SWEETS.** Medium to large in size, medium early and exceedingly sweet; oblong in form, slightly tapering towards the stem end; rind very dark green; flesh bright, rich red and ripens nearly to the rind; white-seeded. Pkt., 10c; oz., 20c; ¼ lb., 45c; lb., \$1.50.

## ONIONS

One ounce will sow 150 feet of drill, 4 to 5 pounds per acre.

**Culture.**—Sow thinly in shallow drills, 12 to 18 inches apart, as soon as the ground opens, and cover seed slightly. Thin out to 4 inches apart. Where very large specimens are desired, sow the seed in hotbed in February and March, transplanting to open ground April 15th. Ground should be well fertilized. Successive plantings can be made until July.

**9020 ROCK'S EXTRA SELECTED AILSA CRAIG.** Globe-shaped, slightly pointed at top and base, straw-yellow in color; gigantic size. Seed should be sown under glass and transplanted 6 inches apart in the row where they are to grow. It is mildly pungent in flavor, sweet and desirable. Pkt., 15c; oz., 50c; ¼ lb., \$1.75.

**9030 PRIZETAKER.** The largest late American onion of globular form in rich straw-yellow color. The flesh is white, very mild, tender and of excellent flavor. Pkt., 10c; oz., 30c; ¼ lb., 95c; lb., \$2.95.

**9045 SOUTHPORT WHITE GLOBE.** White Globe onions are true to type and free from stain. The flesh is crisp, fine-grained, very white and mild. As soon as ripe, the bulbs should be stored in a cool, damp shed or dry cellar. Pkt., 10c; oz., 30c; ¼ lb., 80c; lb., \$2.75.

**9040 SOUTHPORT RED GLOBE.** Most popular of the red onions. Perfectly globe-shaped and very handsome in color. The onions measure from 2 to 3½ inches in diameter, and are very uniform both in size and shape. Our seed has been selected to produce thin-necked plants which ripen down to a hard, solid ball, producing the largest proportion of marketable onion. They are also good keepers. The Globe varieties, as a rule, yield the largest crops. Pkt., 10c; oz., 30c; ¼ lb., 85c; lb., \$3.00.

**9035 LARGE RED WETHERSFIELD.** One of the oldest and best known types of onion. A fine, large, rather flat sort of a deep purplish red color; noted for its productiveness and keeping qualities. Pkt., 10c; oz., 25c; ¼ lb., 75c; lb., \$2.25.

**9043 VALENCIA.** The best of the large sweet Spanish onions, growing to an immense size, perfectly round, and it is a better keeper than others of the type. With golden amber skin, the flesh is solid and white, and very sweet and mild. Pkt., 15c.

**9055 WHITE BARLETTA.** One of the earliest, smallest and most handsome white pickling onion; a very good bunching sort. Pkt., 10c; oz., 35c; ¼ lb., \$1.00; lb., \$3.25.

## GARDEN PEAS

One pound will plant 50 feet of drill.

Peas of the extra early smooth class are the very first vegetable to be planted in the spring. The wrinkled sorts follow a little later, as they are not so hardy. Tall, late varieties need brush or other support. Judicious selection of varieties and planting frequently for succession will provide green peas almost through the entire season, with the possible exception of the hottest part of the summer.

**Culture.**—Open furrows three or four inches deep and three feet apart; scatter the seed peas into them and cover with hoe or plow. Cultivate like corn or beans. The late tall sort may be planted in double rows and brush placed in between for support. All Garden Peas, however, require good, strong and fertile soil.

## EARLY VARIETIES

**9150 ROCK'S HUNDREDFOLD.** Decidedly the best of the Laxtonian types and especially recommended for the home garden. Vine 16 inches high, very sturdy and exceedingly productive; pods 4 inches long, broad and pointed, containing 8 or 9 large, dark green peas of highest quality. Pkt., 10c; ½ lb., 30c; lb., 50c; 2 lbs., 95c; 10 lbs., \$3.50.

**9175 NOTT'S EXCELSIOR.** Height, 15 inches. A very popular, early wrinkled pea. It follows the early round types only 2 or 3 days and is quite superior in quality. Pods are about 3 inches long and contain from 5 to 7 peas of good size, tender and delicious. A vigorous and prolific grower requiring no support. Pkt., 10c; ½ lb., 25c; lb., 45c; 2 lbs., 80c; 10 lbs., \$3.50.

**9155 LAXTONIAN.** A large-podded variety which is very popular. Grows about 18 inches high and produces many pods 3¼ inches long, straight and pointed, containing 6 to 8 delicious dark green peas. Pkt., 10c; ½ lb., 30c; lb., 50c; 2 lbs., 95c; 10 lbs., \$4.00.

**9160 LITTLE MARVEL.** Height, 14 inches. Pods 3 inches long, nearly round and square ended, containing 7 dark green peas of high quality. Pkt., 10c; ½ lb., 25c; lb., 45c; 2 lbs., 80c; 10 lbs., \$3.50.

**9125 ALASKA.** Height, 2½ feet. A very early, smooth, blue pea. Popular with canners and market gardeners. Pods 2½ inches long, round, straight and square-ended, containing 6 light green peas. Very uniform in maturity. Pkt., 10c; ½ lb., 25c; lb., 40c; 2 lbs., 70c; 10 lbs., \$3.00.

**9145 GRADUS or PROSPERITY.** Height, 2½ feet. A standard early, large-podded variety. Pods 3¼ inches long, semi-round, straight, slightly curved at the tip and pointed, containing 6 to 8 large, very sweet, medium green peas; high quality. Pkt., 10c; ½ lb., 25c; lb., 45c; 2 lbs., 80c; 10 lbs., \$3.50.

## SECOND EARLY and MAIN CROP PEAS

**9140 IMPROVED DWARF CHAMPION.** Height, 2½ feet. A fine main crop pea. Pods 4 inches long, straight, broad and square-ended, containing 7 to 8 large, medium dark green peas of fine quality. Pkt., 10c; ½ lb., 25c; lb., 40c; 2 lbs., 70c; 10 lbs., \$3.00.

**9135 CHAMPION OF ENGLAND.** Height 4 feet. One of the richest, best flavored late peas; well known and popular. Vine stout, deep green; pods often in pairs, medium green, 3½ inches long, straight, nearly round and blunt-ended, containing 8 light green peas; productive. Late, main crop. Pkt., 10c; ½ lb., 25c; lb., 45c; 2 lbs., 80c; 10 lbs., \$3.50.

**9185 IMPROVED TELEPHONE.** Height, 4 feet, standard, high quality, large-podded pea. Vine and foliage strong and heavy, medium green. Pods 4½ inches long, medium light green, straight broad and pointed, containing 7 to 9 large, light green peas; main crop; productive. Pkt., 10c; ½ lb., 25c; lb., 45c; 2 lbs., 80c; 10 lbs., \$3.50.

## SUGAR PEAS

**9170 MAMMOTH MELTING SUGAR (Edible Pods).** Height, 3½ feet. A main crop variety. Large, broad pods, very brittle and entirely stringless. Vine stout, medium green; pods light green, 3½ inches long, 1 inch broad, pointed, containing 7 light green peas. Seed smooth and white. Pkt., 10c; ½ lb., 25c; lb., 45c; 2 lbs., 80c; 10 lbs., \$3.50.



**PARSLEY**

One ounce will sow 100 feet of drill, 4 to 5 pounds to an acre.

**Culture.**—Soak the seeds a few hours and sow early in spring and continue until early autumn. Sow in rows 18 inches apart. Thin out the plants to 4 inches. To preserve during winter, transplant to light cellar or cold frame.

**9090 ROCK'S EXTRA TRIPLE CURLED.** Very similar to Moss Curled only more crimped. A handsome compact sort. Fine for market or private garden; leaves bright pale green. The most desirable variety for soups or garnishing. We highly recommend it. Pkt., 15c; oz., 25c; ¼ lb., 80c.

**9070 CHAMPION MOSS CURLED.** The leaves are finely cut, curled and of a dark green color, resembling bunches of moss. Extra fine for garnishing and culinary purposes. Pkt., 10c; oz., 20c; ¼ lb., 55c.

**9075 LARGE ROOTED HAMBURG.** The edible roots of this variety resemble a small thick parsnip in shape and color, and are extensively used for flavoring soups and stews; leaves plain. Pkt., 10c; oz., 15c; ¼ lb., 45c.

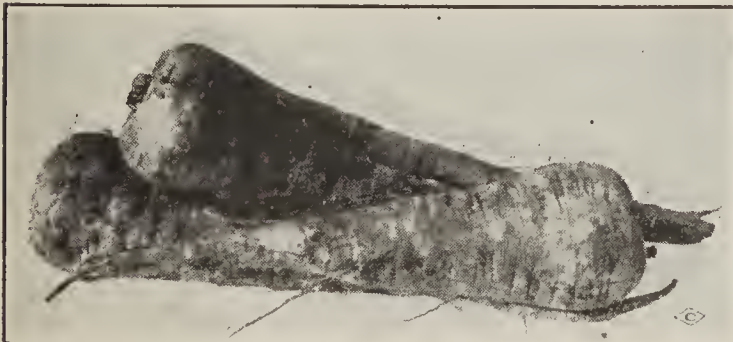
**9080 PLAIN.** The leaves are flat, deeply cut, but not curled and very dark green in color. Pkt., 10c; oz., 15c; ¼ lb., 45c.

**PARSNIPS**

One ounce will plant 100 feet of drill, 4 to 5 pounds per acre.

**Culture.**—This vegetable is easily raised and very productive. Sow early in spring in shallow drills 18 inches apart. The ground should be plowed deep. Thin out plants to 5 inches in rows.

**9110 IMPROVED HOLLOW CROWN.** Roots smooth, usually 15 inches long and 3 inches in diameter at the top; tender and sweet. Better known and more generally grown than any other sort. Pkt., 10c; oz., 20c; ¼ lb., 60c; lb., \$1.95.



**HOLLOW CROWN PARSNIP**

**PEPPERS**

One ounce for about 1,500 plants.

**Culture.**—The pepper plant is tender and should be started under glass. Sow seed in hotbeds in March. The plants should be set 12 to 18 inches apart in rows 2 feet apart. The plants may be transplanted in open ground about May 10th.

**9210 CHINESE GIANT.** A large, mild red variety. It is early and very prolific. Flesh is a rich, glossy scarlet, thick, tender, mild and sweet, and is unexcelled for salads or stuffing. Pkt., 15c; ½ oz., 60c; oz., \$1.00; ¼ lb., \$3.25.

**9225 PIMENTO.** Fine for the home garden. It is so smooth and uniform in shape that the skin can be slipped off after boiling a few minutes. Very sweet and of delicious quality. When ripe it is a beautiful scarlet. Very productive. Pkt., 10c; ½ oz., 45c; oz., 80c; ¼ lb., \$2.75.

**9230 RED CHILI.** Of low growth, forming a spreading plant about 18 inches high; fruit about one and a half inches long, cone-shaped, bright red and very hot; exceedingly prolific; used for peppersauce. Pkt., 10c; ½ oz., 45c; oz., 80c; ¼ lb., \$2.75.

**9235 RUBY KING.** A popular, large-fruited Pepper. Very prolific. The pods are beautiful bright red, 4 inches long and 3 inches in diameter. Flesh exceedingly thick, sweet, and so mild that it is often sliced as a salad. Splendid for stuffing. Pkt., 10c; ½ oz., 45c; oz., 80c; ¼ lb., \$3.00.

**9238 WORLD BEATER.** The best of the giant sweet Peppers, being a cross between Chinese Giant and Ruby King. Fruits are 4-lobed, 5 inches long by 3½ wide. Flesh is very thick and mild. Of extremely large size. Pkt., 10c; ½ oz., 45c; oz., 80c.



**CHINESE GIANT PEPPER**

**HERBS**

	Pkt.	Oz.
<b>8775 ANISE.</b> Used for flavoring.....	\$0.10	\$0.40
<b>8777 BALM.</b> Very fragrant leaves.....	.10	.40
<b>8779 BASIL, SWEET.</b> Leaves useful for flavoring .....	.10	.25
<b>8781 BORAGE.</b> Leaves used for flavoring....	.10	.35
<b>8785 CORIANDER.</b> Seeds used for flavoring..	.10	.20
<b>8787 DILL.</b> Used for flavoring pickles.....	.10	.20
<b>8789 FENNEL, FLORENCE.</b> A bulblike vegetable formed above ground at base of leaf-stalk .....	.10	.25
<b>8791 FENNEL, SWEET.</b> Seeds aromatic.....	.10	.25
<b>8793 LAVENDER.</b> Leaves very fragrant.....	.15	.75
<b>8795 MARJORAM, SWEET.</b> Used as a seasoning .....	.15	.50
<b>8797 ROSEMARY.</b> Leaves very fragrant.....	.15	.75
<b>8799 SAGE.</b> A highly aromatic herb; most useful of all.....	.15	.75
<b>8801 SAVORY, SUMMER.</b> Leaves for flavoring soups .....	.10	.40
<b>8803 THYME.</b> Used as a seasoning.....	.15	.75

**PUMPKINS**

1 ounce will sow 25 hills; 4 pounds to the acre.

**Culture.**—While Pumpkins are of strong growth, they will not stand frost and should not be planted in this latitude until about May 15th. A moderately rich soil is sufficient for good pumpkins. Plant in hills about 6 feet apart. Do not plant near squash or melons.

**9260 LARGE CHEESE.** Large, round, flattened fruits. Ribbed and creamy-buff in color; flesh yellow and very deep; of fine quality and one of the best canning sorts. Excellent keeping qualities. A good sort for pies. Pkt., 10c; oz., 15c; ¼ lb., 40c; lb., \$1.20.

**9270 WHITE CUSHAW (Jonathan).** A popular crook-neck variety with a hard, creamy-white shell; fruits two feet in length with long, solid, meaty necks; fine quality. Pkt., 10c; oz., 20c; ¼ lb., 65c; lb., \$2.00.

**9250 GOLDEN CUSHAW.** Similar to White Cushaw except color of shell which is golden-yellow. Pkt., 10c; oz., 20c; ¼ lb., 65c; lb., \$2.00.

**9265 SWEET, or SUGAR (New England Pie).** Fruits small, round, flattened at the ends, and slightly ribbed; skin and flesh deep orange-yellow; flesh very thick and of high quality. Pkt., 10c; oz., 20c; ¼ lb., 50c; lb., \$1.50.

**9255 KING OF THE MAMMOTS.** A very large variety, often measuring two feet or more in diameter, and weighing 200 to 250 pounds each. A grand prize-winning sort. Skin is salmon-orange color, flesh is thick, bright yellow and fine grained, and of good quality. Notwithstanding its enormous size, it is one of the best pumpkins for table use. A splendid keeper. Pkt., 10c; oz., 25c; ¼ lb., 70c; lb., \$2.25.

**"GARDEN GUIDE"**

A book for all garden lovers, containing helpful information on growing flowers, vegetables and fruit. 384 pages with 275 illustrations. Cloth bound, \$1.65.

The sale of 95,000 copies is positive proof of its useful contents.





FRENCH BREAKFAST RADISHES

## RADISHES

1 ounce will sow 100 feet of drill, 8 to 10 pounds to the acre.

**Culture**—The soil for radishes should be thoroughly pulverized, as their tender and mild qualities depend much upon their rapid growth. For early use, sow in hotbeds in March and in the open air as soon as the ground can be worked. For a succession, at intervals of ten or twelve days. The winter varieties should be sown in August, lifted before severe frost and stored in the cool cellar. Sow in drills 12 to 18 inches apart and cover lightly; thin out while small to 3 inches apart.

## ROUND and OLIVE-SHAPED VARIETIES

**9355 SCARLET GLOBE.** We have an exceptionally fine stock of this superb variety. It is one of the earliest of the forcing radishes and does equally well outside; roots are of good size, globe-shaped and with a very small top; always crisp and tender; color a bright scarlet. Pkt., 10c; oz., 20c;  $\frac{1}{4}$  lb., 60c; lb., \$1.90.

**9295 CRIMSON GIANT.** An excellent, large sort, developing roots of a bright, crimson color; the flesh remains solid, crisp and juicy; of the mildest flavor. Pkt., 10c; oz., 20c;  $\frac{1}{4}$  lb., 60c; lb., \$2.00.

**9300 ROCK'S EARLIEST FORCING.** Undoubtedly the earliest of the forcing radishes, and equally valuable for outdoor planting. Round, bright scarlet roots, with the smallest possible top. Even better than our Scarlet Globe. Pkt., 10c; oz., 25c;  $\frac{1}{4}$  lb., 75c.

**9315 FRENCH BREAKFAST.** A medium-sized radish, olive-shaped, small top, of quick growth, very crisp and tender, of a beautiful scarlet color, with small white tips. Splendid for the table on account of its attractive color and fine quality. Pkt., 10c; oz., 20c;  $\frac{1}{4}$  lb., 50c; lb., \$1.50.

## LONG VARIETIES

**9340 WHITE ICICLE.** The roots are perfectly white in color, long, slender and tapering in shape. The flesh is crisp, tender, mild in flavor and of exceptionally fine quality. Admirably adapted for growing under glass as well as in the open ground. The earliest of the long white sorts. Pkt., 10c; oz., 15c;  $\frac{1}{4}$  lb., 45c; lb., \$1.50.

**9290 CINCINNATI MARKET (The Glass).** A long radish of light pink color, white tipped, of uniform size. The flesh is transparent white, always crisp, brittle, and of mild flavor, even if grown to a large size. Largely grown for the market, especially in the South. Roots 6 to 7 inches long, with small tops. Pkt., 10c; oz., 15c;  $\frac{1}{4}$  lb., 45c; lb., \$1.50.

## FALL or WINTER VARIETIES

**9320 LONG BLACK SPANISH.** One of the latest and hardest varieties for winter use; roots 8 to 9 inches long, 2 to 3 inches in diameter and nearly black in color. Pkt., 10c; oz., 20c;  $\frac{1}{4}$  lb., 50c; lb., \$1.75.

**9330 ROUND BLACK SPANISH.** Roots are round, 3 to 4 inches in diameter; skin almost black, flesh white, crisp and pungent. Pkt., 10c; oz., 20c;  $\frac{1}{4}$  lb., 50c; lb., \$1.75.

**9325 ROSE CHINA WINTER (Scarlet China).** One of the very best winter sorts; stump-rooted or blunt at both ends; skin smooth and bright, deep rose color; flesh white, crisp and pungent; the roots grow 4 to 5 inches long and 2 inches thick. Pkt., 10c; oz., 20c;  $\frac{1}{4}$  lb., 50c; lb., \$1.75.

## RHUBARB

1 ounce will sow 25 feet of drill,  $3\frac{1}{2}$  pounds per acre.

**Culture**—Sow seed in a cold frame about the first of March, in drills 4 inches apart. Transplant to a rich soil and set in rows 12 inches apart each way. Transplant again early in next spring to permanent location, setting roots 4 feet apart each way in rich soil. Rhubarb is ready for use the second year from seed.

**9375 MYATT'S LINNAEUS GIANT.** An early variety, immense stalk and very tender. Pkt., 10c; oz., 15c;  $\frac{1}{4}$  lb., 45c.

## SPINACH

1 ounce will sow 100 feet of drill, 10-12 pounds per acre.

**Culture**—Most popular of plants for greens. Plant seed in rich ground, in rows 12 to 14 inches apart, and cover 1 inch deep. Thin to about 6 inches apart. Cut before hot weather, when young and tender. For early spring plants, sow seed in August or September and protect with a light covering of leaves or straw. Spring planting should be made as early as the ground can be worked, and, for succession, until May 1st. To produce large leaves and luxuriant growth, good soil is necessary.

**9435 KING OF DENMARK.** The best long standing Spinach, remaining two weeks longer than others before bolting to seed. Large spreading leaves, crumpled and blistered. Of most vigorous habit. Delicious flavor. Pkt., 10c; oz., 15c;  $\frac{1}{4}$  lb., 35c; lb., 90c.

**9440 LONG SEASON.** Plant makes a flat rosette with very dark green, crumpled, broad and pointed leaves.

An excellent long-standing variety. Pkt., 10c; oz., 15c;  $\frac{1}{4}$  lb., 35c; lb., 90c.

**9445 NEW ZEALAND.** Entirely distinct from the true Spinach; plant tall and spreading with numerous side shoots; leaves medium green, pointed; grows well in hot weather and under adverse conditions. Pkt., 10c; oz., 15c;  $\frac{1}{4}$  lb., 35c; lb., 90c.

## SALSIFY

1 ounce for 50 feet of drill, 9 pounds per acre.

**Culture**—Sow in drills 12 to 18 inches apart, 1 inch deep. After plants are up 3 inches high, thin to 5 inches apart in the row. Cultivate about the same as for carrots. The roots will carry through the winter if left standing in rows. This vegetable can be served in a number of different ways, as soups, or fried or mashed like potatoes or turnips. You should grow this excellent vegetable in your garden.

**9410 MAMMOTH SANDWICH ISLAND.** The largest and most profitable Salsify under cultivation. Roots heavy, of agreeable flavor, white in color and a satisfactory sort in every way. Pkt., 10c; oz., 30c;  $\frac{1}{4}$  lb., 85c; lb., \$3.00.

## SQUASH

1 ounce will plant 25 hills, 3 to 4 pounds per acre.

**Culture**—The general principles of culture are the same as for cucumbers and melons. The summer varieties should be planted 4 feet apart each way and the winter sorts 6 feet. Four plants are sufficient for a hill. Care should be taken not to break the stems from the squashes intended for winter use, as the slightest injury will increase the liability to decay.

## SUMMER VARIETIES

**9490 MAMMOTH WHITE BUSH SCALLOP.** A mammoth variety of unusually good quality, often growing 12 inches in diameter, somewhat warted and of a clear, waxy white color. Excellent flavor and very productive. Pkt., 10c; oz., 20c;  $\frac{1}{4}$  lb., 60c; lb., \$1.95.

**9477 GIANT SUMMER CROOKNECK (Bush).** One of the earliest summer varieties; fruits often 2 to  $2\frac{1}{4}$  feet long, very warty and deep orange in color. Pkt., 10c; oz., 20c;  $\frac{1}{4}$  lb., 60c; lb., \$1.95.

**9475 ENGLISH MARROW (Bush).** An English variety for summer and fall use; grows about 9 inches long and perfect oblong in form; shell pale yellow; flesh white. Pkt., 10c; oz., 30c;  $\frac{1}{4}$  lb., 85c.

## WINTER VARIETIES

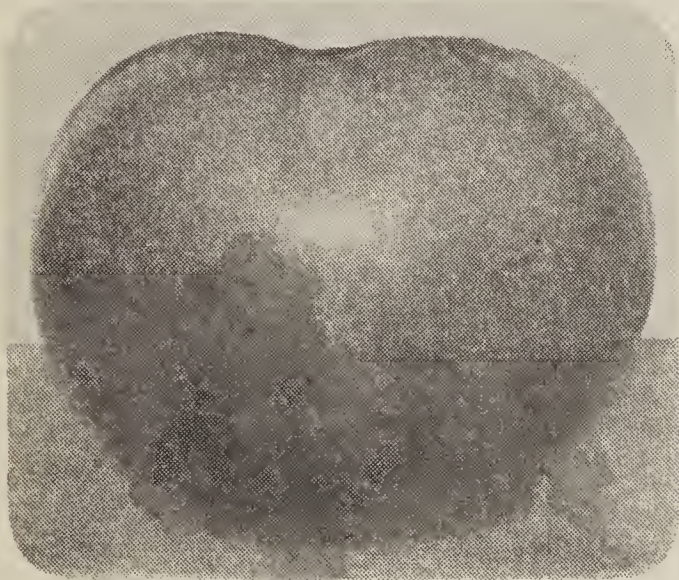
**9480 GOLDEN HUBBARD.** An excellent, very early variety; the shell moderately warty, hard, strong and of a rich orange-red color, with occasional creamy stripes running toward the blossom end, and deep green on button; flesh deep orange, dry and of best quality; an excellent keeper. We highly recommend this variety. Pkt., 10c; oz., 20c;  $\frac{1}{4}$  lb., 60c; lb., \$1.95.



SQUASH

9470 DELICIOUS. One of the finest flavored of all squashes. Grows to weigh five to ten pounds; keeps well. Color a green shade; flesh is very thick, dry and deep orange in color. Pkt., 10c; oz., 25c; ¼ lb., 70c; lb., \$2.25.

9485 WARTED HUBBARD. Similar in size and quality to the well-known Hubbard, but is more heavily warted and a very dark green. Pkt., 10c; oz., 20c; ¼ lb., 60c; lb., \$1.95.



STONE TOMATO

TOMATOES

1 ounce of seed will produce from 3,000 to 4,000 plants.

**Culture**—Sow seed in a box or hotbed early and transplant into flats at least once to get a strong root growth. When danger of frost is over, set in open ground 3 to 5 feet apart each way and cultivate thoroughly.

9580 ROCK'S PERFECTED EARLIANA. The earliest and best of the early tomatoes; very productive. Fruit round, very smooth and solid and produced in clusters in center of the plant; color bright scarlet. Rock's perfected strain of this variety is unsurpassed. Pkt., 10c; ½ oz., 30c; oz., 50c; ½ lb., \$1.50.

9598 OXHEART. Much in demand for reason of its large size and attractive shape. The skin is pink, firm and very fleshy, often without a seed cavity. Fine for slicing. Pkt., 15c; ½ oz., 40c; oz., 70c.

9590 JOHN BAER. Produces 50 to 100 fruits to each plant. Ripens evenly without cripples, cracked or scarred fruit. Bright scarlet color; mild, deliciously sweet flesh, which is almost seedless. Pkt., 10c; ½ oz., 30c; oz., 50c; ¼ lb., \$1.50.

9595 NEW MARGLOBE. This excellent new variety was developed by the Bureau of Plant Industry, U. S. Department of Agriculture, and is undoubtedly the finest second early type in the country. It is an extremely heavy producer in all sections and especially so in the central and southern states where Tomatoes are affected by wilt and rust; this strain is immune. Fruits ripen evenly and are of globular form, large, smooth and meaty and free from cracks. Pkt., 15c; ½ oz., 40c; oz., 70c.

9600 PONDEROSA. An exceptionally large, purple-fruited tomato and for home use one of the best; fruit very solid, with but few seeds. Rock's strain of this variety has been perfected to remove roughness and tendency to split, which it formerly possessed. Pkt., 15c; ½ oz., 40c; oz., 70c; ¼ lb., \$2.25.

9605 STONE. One of the heaviest and most solid fruited of the large tomatoes of good quality. Vines vigorous and productive. Fruit round, deep scarlet, slightly flattened, very large and astonishingly heavy. The quality is unexcelled. Pkt., 10c; ½ oz., 30c; oz., 50c; ¼ lb., \$1.50.

9585 GOLDEN DWARF CHAMPION. In our estimation it is the finest of all yellow-fruited tomatoes. Fruits are round, smooth, lemon-yellow skin and flesh. Very tender and with small seed cavity. It is of wonderful flavor and said to be the least acid of all tomatoes. Pkt., 15c; ½ oz., 40c; oz., 75c; ¼ lb., \$2.25.

SMALL FRUITED TOMATOES

	Pkt.	Oz.
9625 RED PEAR. Used to make Tomato Figs.	\$0.15	\$0.60
9635 YELLOW PEAR. Pickled in unbroken form	.15	.70
9640 YELLOW PLUM. Yellow flesh, fine flavor	.15	.60
9630 STRAWBERRY OR HUSK TOMATO, Highly esteemed for preserves	.15	.70

TURNIPS

1 ounce will sow 200 feet of drill; 2 pounds will sow an acre.

**Culture**—For early use, sow as soon as the ground can be worked in spring in drills 15 inches apart and thin to 5 or 6 inches apart. For succession, sow at intervals of a fortnight until the last week of July, from which time until the end of August sowings may be made for main and late crops.

9550 EARLY WHITE FLAT DUTCH (Strap-Leaved). An old standard sort, and one of the most popular varieties for either spring or fall planting. Of medium size and a quick grower. Is flat with very small fine tap-root. Flesh and skin pure white; fine-grained and sweet. Pkt., 10c; oz., 15c; ¼ lb., 35c; lb., \$1.00.

9540 PURPLE TOP STRAP-LEAVED. The most widely cultivated and best known variety. Roots flat, white on the bottom and reddish purple above ground; very early. A fine table variety which we may safely recommend. Pkt., 10c; oz., 15c; ¼ lb., 35c; lb., \$1.00.

9530 EXTRA EARLY PURPLE TOP MILAN. A fine, medium-sized turnip and one of the earliest. Smooth white flesh, purple top, and flat in shape. One of the best standard varieties. Pkt., 10c; oz., 20c; ¼ lb., 50c; lb., \$1.50.

9535 PURPLE TOP WHITE GLOBE. Of a perfect globe-shape with smooth, white skin; flesh pure white, firm and crisp, and of quick growth. A good keeper and is fine for market. Pkt., 10c; oz., 15c; ½ lb., 30c; lb., 90c.

9525 IMPROVED GOLDEN BALL. The best of the yellow-fleshed turnips; the tops are small, round, smooth and deep yellow; flesh firm, crisp and of most excellent quality. Pkt., 10c; oz., 15c; ¼ lb., 30c; lb., 90c.



RUTABAGAS

OR SWEDISH TURNIP

1 ounce will sow 200 feet of drill, 1 to 2 pounds per acre.

9390 IMPROVED AMERICAN PURPLE TOP. One of the most desirable sorts. Hardy and productive; flesh yellow, of solid texture, sweet and well flavored; shape slightly oblong, with little or no neck. Smooth, with only small tap-root; color of skin purplish red above the ground and bright yellow below. Pkt., 10c; oz., 15c; ¼ lb., 35c; lb., \$1.00.



# Terms of Sale

It is necessary that you read these terms before ordering, to insure the careful and prompt service **ROCK'S** endeavor to render at all times.

## Delivery Charges

All items of flower and vegetable seed will be forwarded at our expense. No charges are made for packing. Garden requisites, insecticides, bulbs and lawn grass seed are forwarded at purchaser's expense unless otherwise noted. Parcel post rates listed below.

## Charge Accounts.

Parties ordering goods without remittance must furnish satisfactory reference for opening an account. A Kansas City reference is preferable, on account of the shorter delay pending investigation.

## Remittances

May be made by Express Money Order, P. O. Money Order, Bank Draft or Check. Stamps or Cash sent through the mails go at purchaser's risk, unless letter is registered.

## In Ordering

Write plainly, using greatest care to copy the correct items. It may be well to keep a duplicate of your order for comparison. Address all communications to Rock's Seeds, 1106 Grand Ave., Kansas City, Mo.

## C. O. D. Orders

We must decline sending orders C. O. D. unless 25 per cent of the amount is remitted with the order. All transportation charges will be collected on delivery.

## Non-Warranty.

Most of the failures with seeds are due to causes entirely beyond our control, such as unfavorable weather, soil conditions, too deep or too shallow planting, etc. While we exercise the greatest care to furnish only the best quality of seed, and deem it necessary to our best interests to send out only such stock, we cannot guarantee description, quality or productiveness of any seed sent out. This is the universal custom of the Seed Trade. If any Bulbs prove untrue to the description under which they are sold, we hold ourselves in readiness, on proper proof, to replace all such stock that may prove otherwise, or refund the amount paid; but we shall in no case be liable for a sum greater than the amount originally received for said stock.

**We Guarantee the Safe Arrival in the United States  
of All Goods Shipped by Express or Parcel Post**

## Parcel Post Rates

(Approximate)

DOMESTIC PARCEL POST RATES Within the United States and Possessions	First Pound (over 8 oz. rates as 1 lb.)
Weight Limit for all zones, 70 lbs. Size limit, 100 inches for combined • length and largest girth.	
First Zone, within 50 miles of Kansas City, Mo.....	8c
Second Zone, within 50 to 150 miles of Kansas City, Mo.....	8c
Third Zone, within 150 to 300 miles of Kansas City, Mo.....	9c
Fourth Zone, within 300 to 600 miles of Kansas City, Mo.....	10c
Fifth Zone, within 600 to 1,000 miles of Kansas City.....	11c
Sixth Zone, within 1,000 to 1,400 miles of Kansas City, Mo.....	12c
Seventh Zone, within 1,400 to 1,800 miles of Kansas City, Mo.....	14c
Eighth Zone, all over 1,800 miles from Kansas City, Mo.....	15c

















Rock's Country Club Lawn Grass Seed will Produce Better Lawns.

# ROCK'S LAWN GRASS SEED

The lawn furnishes the setting for every home and no single feature is so highly important to the beautification of the home grounds as is this one factor. It should be primary in every planting.

It is not impossible to produce a rich, velvety lawn even in the hot, dry climate of the middle-western and southern states. One may be had with very little expense and trouble if care is made in the selection of seeds and sown properly at the right time.

If we can assist in solving your turf problems, do not hesitate to call upon us.

Our mixtures are the results of many years experimenting with various grasses and their adaptability to trying climatic conditions.

## ROCK'S COUNTRY CLUB LAWN GRASS SEED

The most celebrated mixture of grass seed in the West, and justly so, considering its adaptability to the trying weather conditions of this climate. Many exhaustive trials covering a long period of years have produced this superb mixture, a combination of fine-leaved, dwarf, hardy grasses that will produce and retain a beautiful lawn throughout the summer. It is prepared from our own formula and is absolutely free from weeds and chaff. For new lawns we recommend about 125 pounds per acre, or for small plots 1 pound to 17 feet square. Lb., 50c; 3 lbs., 85c; 5 lbs., \$1.30; 10 lbs., \$2.50; 100 lbs., \$23.00.

## ROCK'S SHADY PARK LAWN GRASS SEED

An especially adapted mixture for the shaded lawn where so many unsightly bare spots are noticeable. It is well to make an application of agricultural slaked lime occasionally in such places that are shaded heavily; this prevents the soil from becoming sour. Sow 125 pounds per acre or 1 pound to 17 feet square. Lb., 50c; 3 lbs., 85c; 5 lbs., \$1.30; 10 lbs., \$2.50; 100 lbs., \$23.00.

**FOR TERRACES:** A selection of the grasses that root deeply and yet retain a rich, velvety green so uncommon in terraces. 1 lb., 40c; 3 lbs., \$1.14; 5 lbs., \$1.80; 10 lbs., \$3.40; 100 lbs., \$30.00.

## ROCK'S VARIOUS GRASSES

The same high quality as used in our mixtures. All varieties are re-cleaned, tested and free from foreign seeds.

	1 lb.	3 lbs.	5 lbs.	10 lbs.	100 lbs.
Kentucky Blue Grass	\$0.50	\$0.85	\$1.50	\$2.50	\$23.00
White Clover	.50	1.44	2.30	4.40	40.00
Perennial Rye	.40	1.14	1.80	3.50	30.00
Red Top	.50	.85	1.30	2.50	23.00
Poa Trivialis	.60	1.75	2.80	5.30	48.00

For Shady Places—  
 Bermula—Write for prices.  
 Seaside Bent—Write for prices.

# Rock's SEEDS