

N^o 27,146



A.D. 1902

Date of Application, 9th Dec., 1902—Accepted, 19th Feb., 1903

COMPLETE SPECIFICATION.

Improvements in the Construction of Theatres and other Places of Public Resort.

We, ROBERT ALEXANDER BRIGGS, Engineer and FRANK MATCHAM, Architect, both of 9 Warwick Court, in the City of Westminster, do hereby declare the nature of this invention and in what manner the same is to be performed, to be particularly described and ascertained in and by the following statement.

5 This invention relates to the construction of theatres and other places of public resort, hereinafter referred to as theatres, and has special reference to an improvement in or applicable to the construction of the dress and other circles galleries and like parts, hereinafter referred to as circles, of theatres, its object being to avoid the irregularities of appearance and the inconveniences incidental
10 to the construction of such theatre parts with straight-across girders supported by the theatre side walls with angularly disposed girders connecting the same with more forward parts of the side walls, as customarily used, and to simplify improve and strengthen the construction of such theatre parts.

To this end, the invention is characterized by the construction of such circle
15 gallery and like parts of theatres with a continuous bow girder made concentric or substantially so with the front railing of the circle for the greater part of its length in particular as regards the part facing towards the stage with the terminating tangential ends resting on the theatre side walls, the intervening part of the girder being supported by a plurality of spoke-like crossing girders
20 rivetted or bolted thereto and radiating from a centre common to the curve of such railing and girder or substantially so and the outer ends of which are adapted to rest on the theatre side and back walls so as to be supported thereby and thus adapted to support both the girder and the front railing of the circle.

On the accompanying drawings, Fig. 1, represents a plan view.

25 Fig. 2 represents a sectional elevation on the line 2—2, Fig. 1, and Fig. 3, represents a perspective view.

a, represents the back wall, and, *b*, the side walls of the theatre, and *c*, represents the front railing of the dress or other circle gallery or like part of the theatre to which the improved construction is applied, the ends of the railing not
30 being shown as they may be continued indefinitely or variously and are of no moment in relation to the present invention.

d, represents the bow girder, which, as regards its main extent, the part following the stage fronting curve of the circle railing, *e*, is made concentric therewith, or substantially so, its ends, *d'*, where the railing, *c*, curves towards
35 parallelism with the side walls, being made tangential in relation to its own curve, to minimize the leverage of the intermediate part of the girder, and resting on the side walls.

The girder is crossed by a plurality of radiating girders *e*, which are rivetted or bolted thereto and carry the circle railing at their fore ends, and which
40 together with the girder form a spoke-like framework adapted to be supported by the outer ends of the girders resting on the side and back theatre walls, and to support the theatre part to which it is applied without any necessity of loading the crossing girder ends.

[Price 8s.]



Improvements in the Construction of Theatres and other Places of Public Resort.

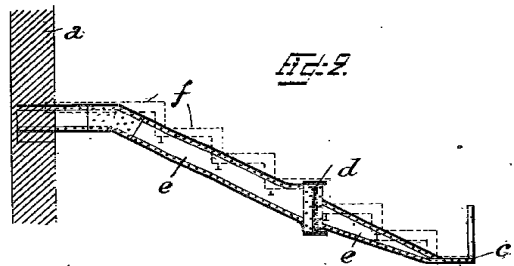
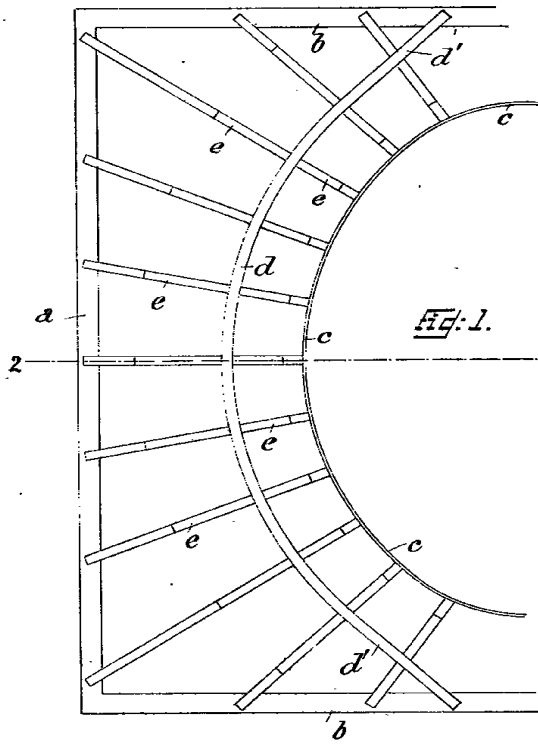
Fig. 2, may be taken as a typical sectional illustration, at each of the cross girders, in showing that, at all parts, excepting the extreme ends, the bow girder occupies practically the same relation to the circle front railing throughout the stage fronting curve of the circle, whereby the stepping, *f*, as also the seating of the circles, is regular throughout such extent, as is also the ceiling below, the headway under which is unencumbered by irregular projections, whereby the irregularities of appearance and inconveniences above referred to are avoided. 5

Having now particularly described and ascertained the nature of the said invention and in what manner the same is to be performed, we declare that what we claim is:— 10

In the construction of the circles galleries and like parts of theatres and like places of public resort, in combination, a bowed girder made concentric or substantially so with the front rail of the circle theatre part and with tangential ends, and a plurality of radiating girders crossing the bowed girder and secured thereto and forming therewith an inner and outer spoked framework, the outer ends of the girders of which are adapted to rest on so as to be supported by the theatre side and back walls, and to support the whole theatre part, without being loaded, and the inner ends of the crossing girders of which are adapted to carry the circle front railing, as set forth. 15 20

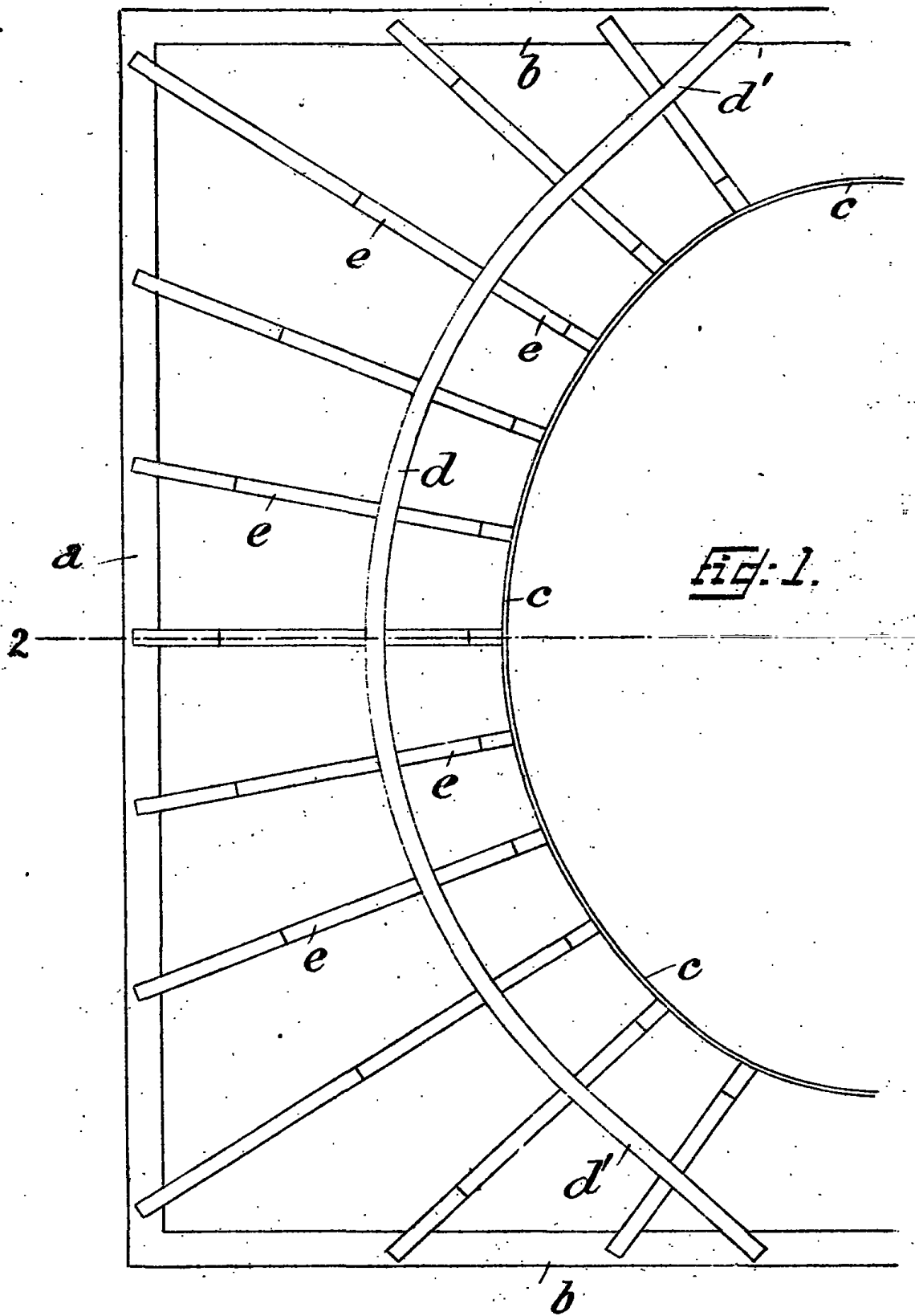
Dated this 9th day of December. 1902.

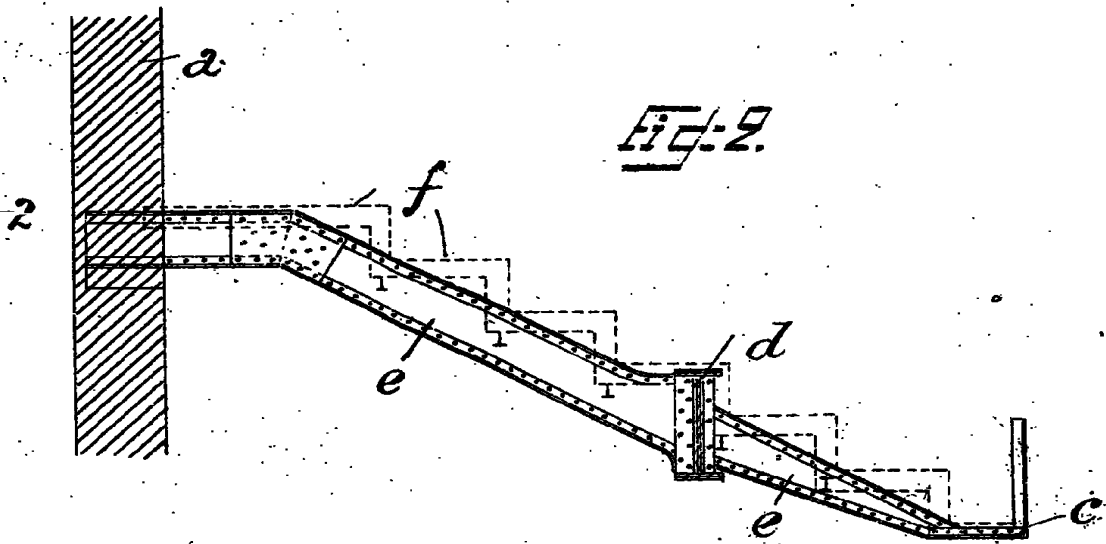
DAY, DAVIES & HUNT,
Chartered Patent Agents.
321, High Holborn. London. W.C.
Agents for the Applicant. 25



[This Drawing is a reproduction of the Original on a reduced scale.]

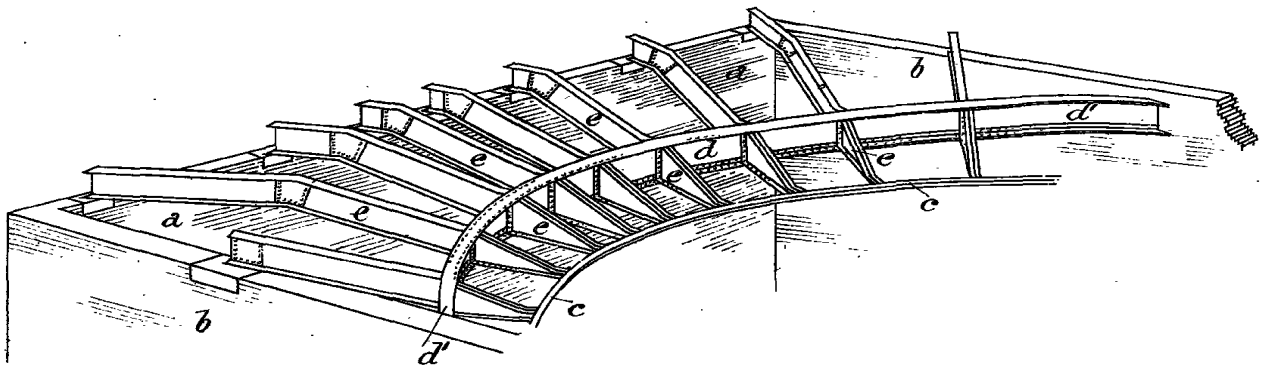
Masby & Sons
BIRMINGHAM
ENGINEERS
LIBRARIERS





[This Drawing is a reproduction of the Original on a reduced scale.]

FIG. 3



[This drawing is a reproduction of the original on a reduced scale.]

A.D. 1902. Dec. 9. N^o: 27,146.

BRIGGS & another's COMPLETE SPECIFICATION.

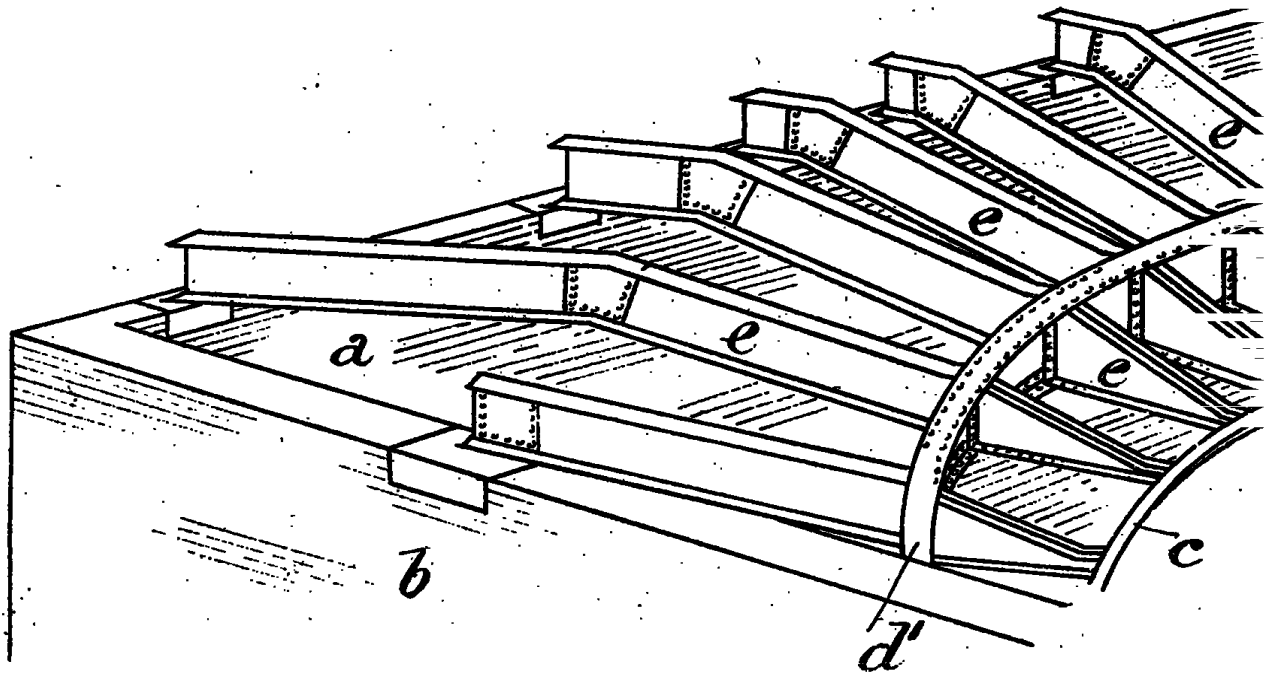
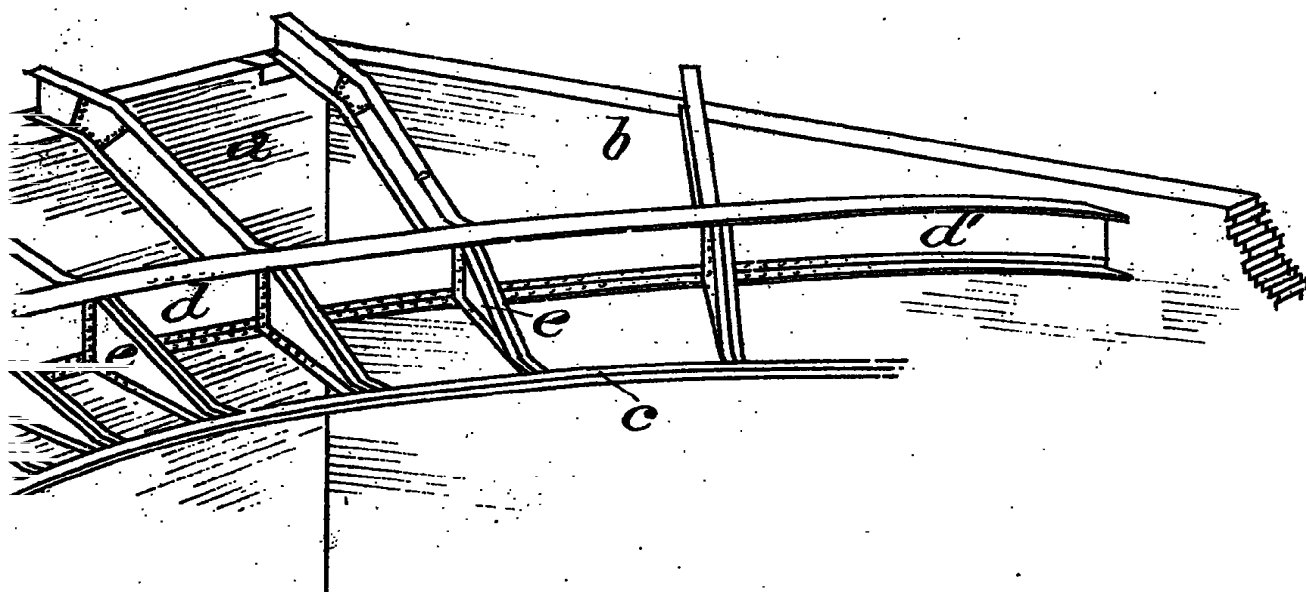


FIG. 3



[This Drawing is a reproduction of the Original on a reduced scale.]