

# Capacitor in an AC circuit

---

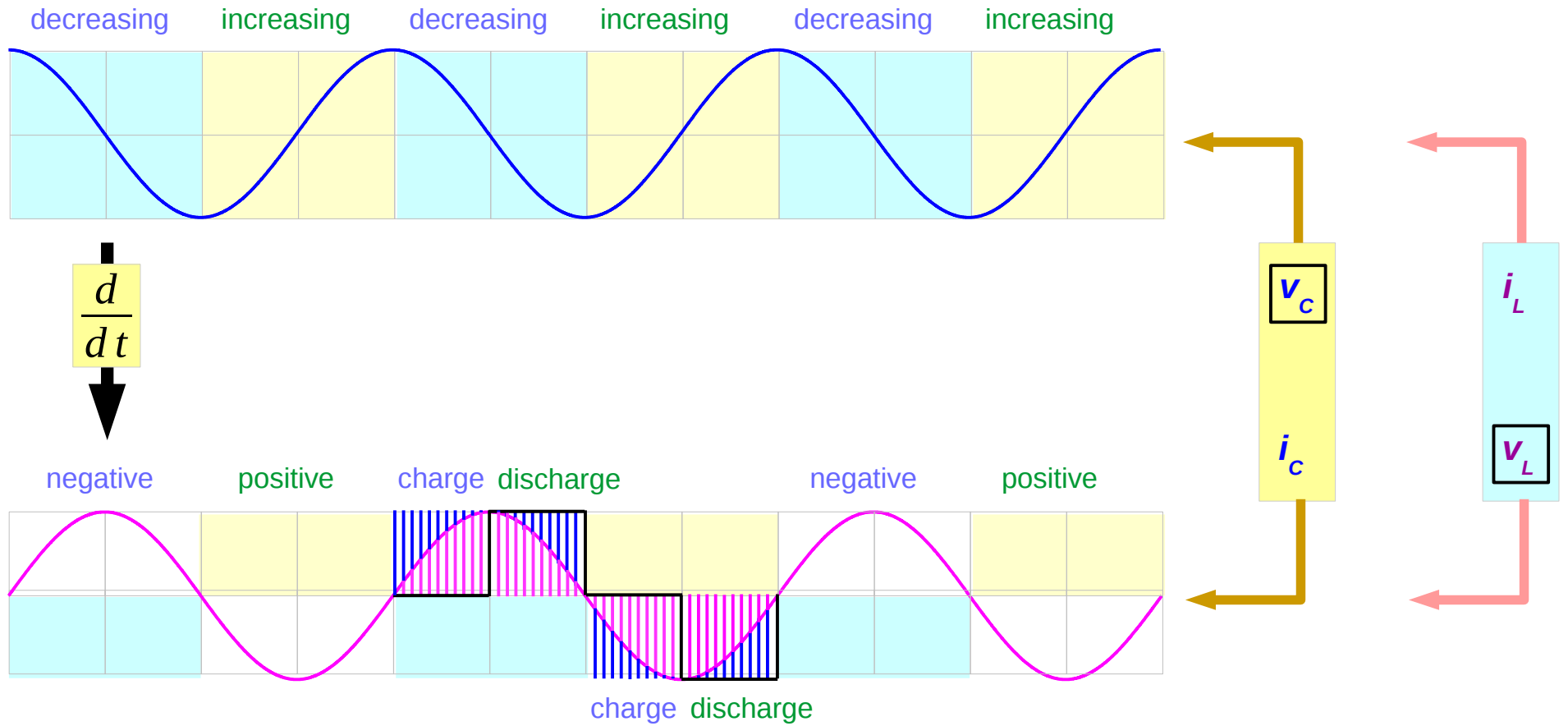
Copyright (c) 2011 - 2017 Young W. Lim.

Permission is granted to copy, distribute and/or modify this document under the terms of the GNU Free Documentation License, Version 1.2 or any later version published by the Free Software Foundation; with no Invariant Sections, no Front-Cover Texts, and no Back-Cover Texts. A copy of the license is included in the section entitled "GNU Free Documentation License".

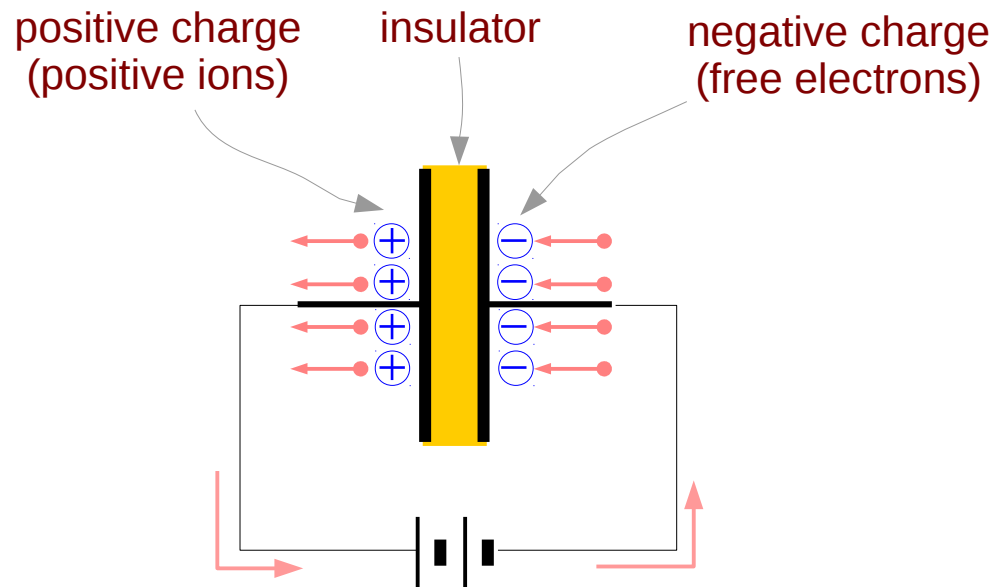
Please send corrections (or suggestions) to [youngwlim@hotmail.com](mailto:youngwlim@hotmail.com).

This document was produced by using OpenOffice and Octave.

# Everchanging signal pairs



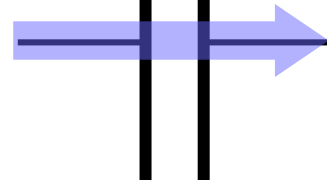
# Capacitor Current



No actual electrons movement across insulator materials



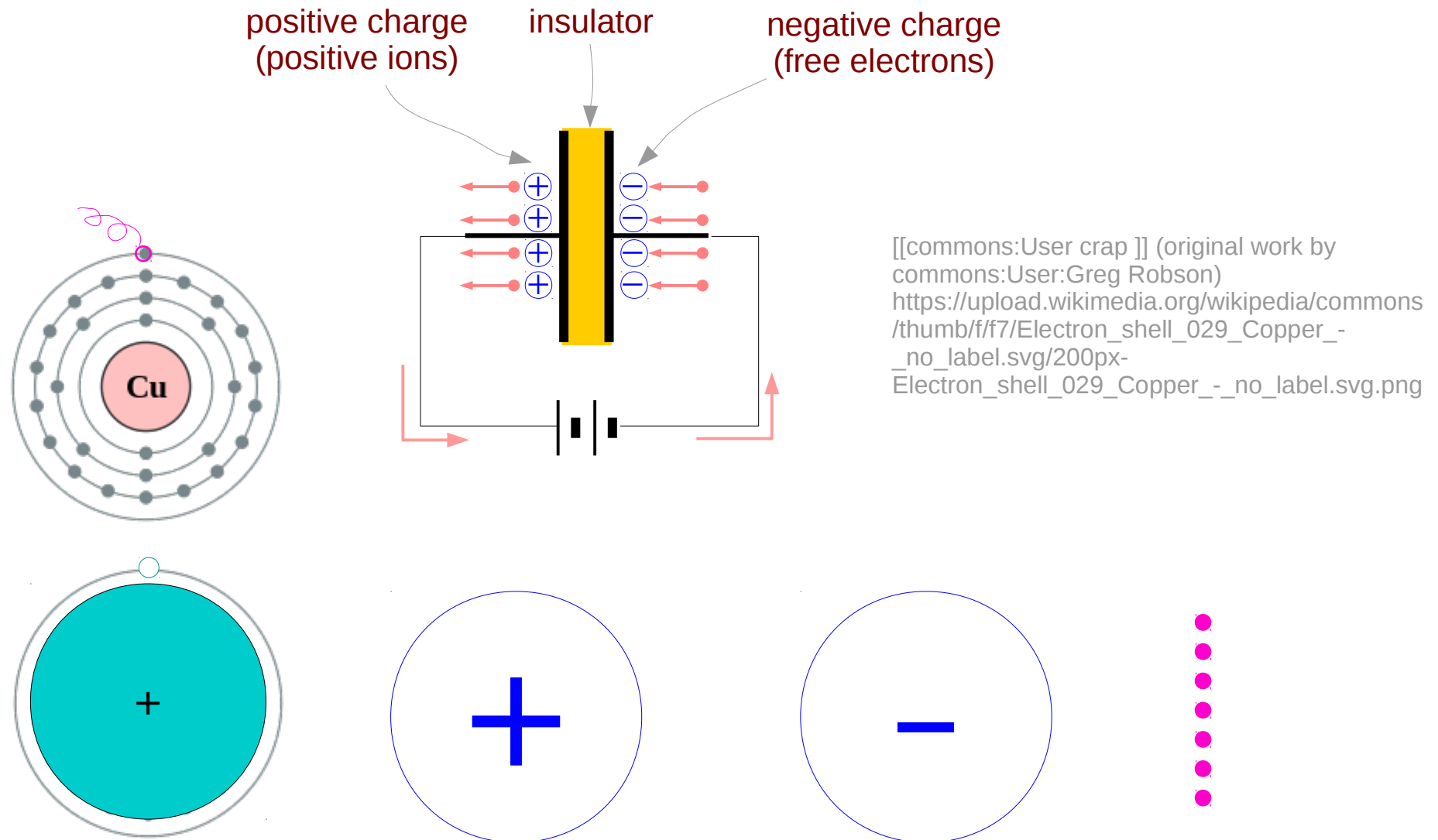
But, think as



**Displacement Current**

flows through the capacitor

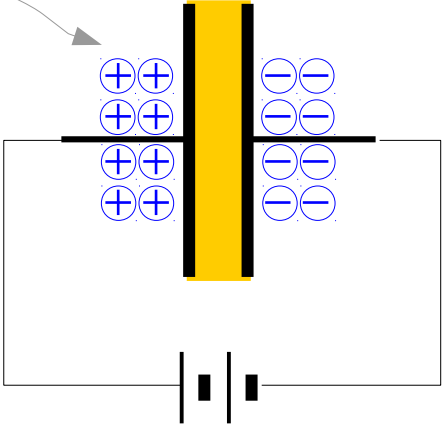
# Positive ions and free electrons



# Three States

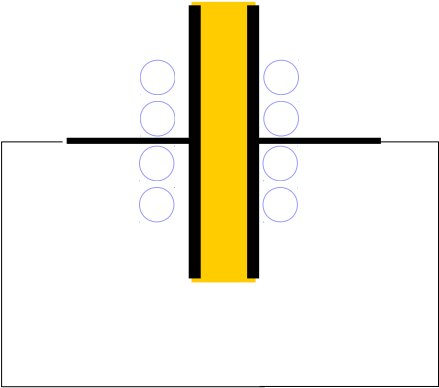
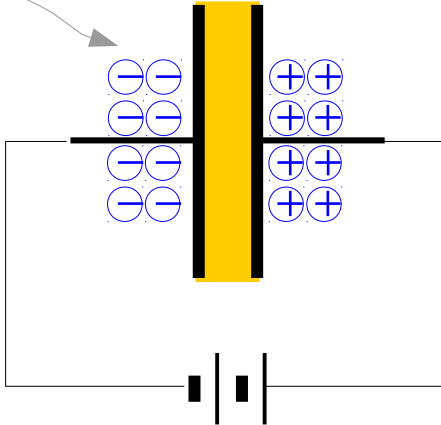
positive charge  
(positive ions)

**Positively Charged State**  
fully charged → no current



negative charge  
(free electrons)

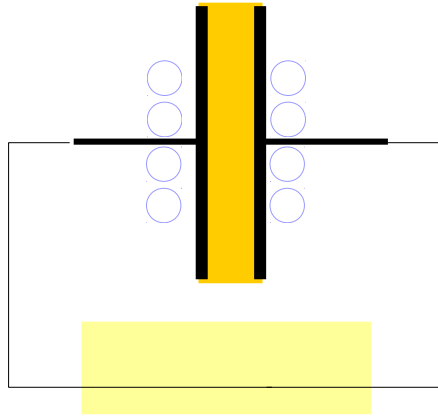
**Negatively Charged State**  
fully charged → no current



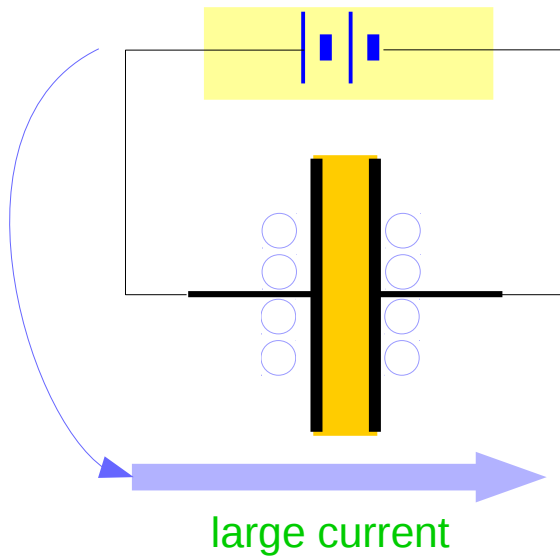
**Fully Discharged State**  
possible large current

# Currents in the Fully Discharged State

Initially no current



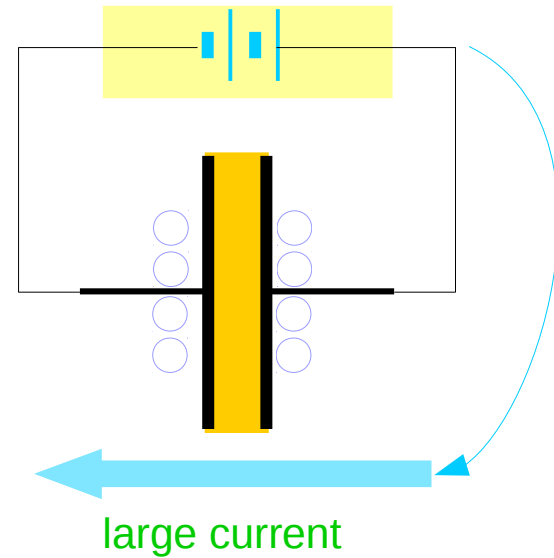
Fully Discharged State



Fully Discharged State

This state can flow large current in either direction

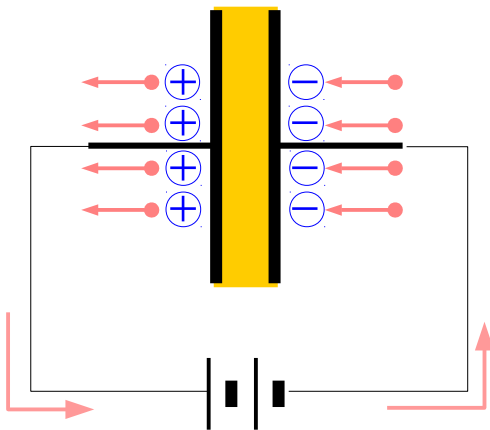
Fully Discharged State



# Inter-State Current Flowing

## Under Positively Charging

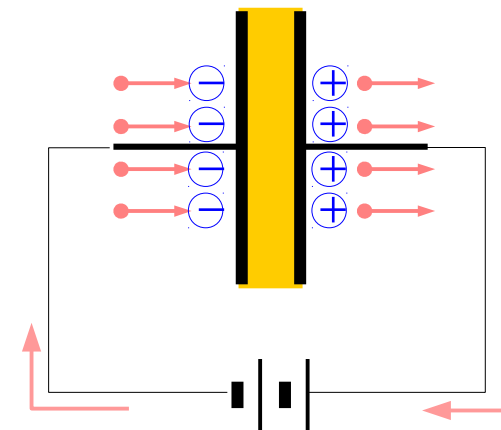
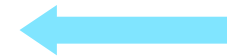
(+) current flow direction



electron flow direction

## Under Negatively Charging

(-) current flow direction



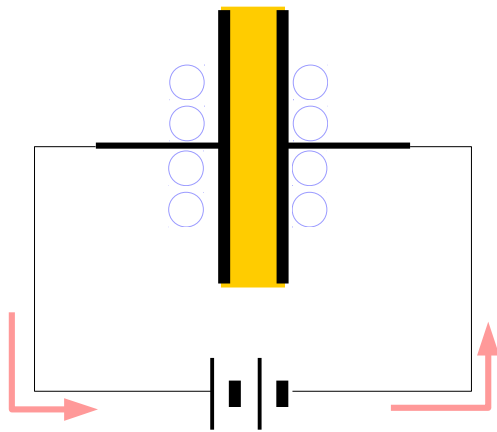
electron flow direction



# Inter-State Current Flowing

## Fully Discharged State

(+) current flow direction

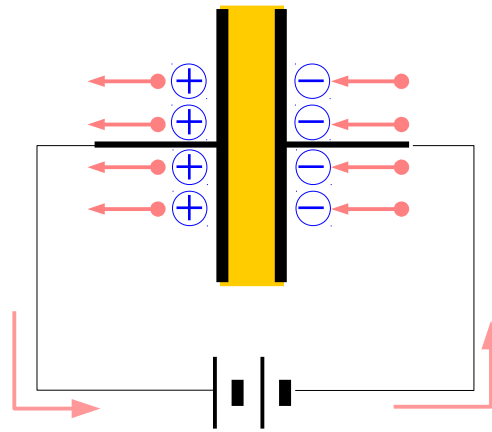
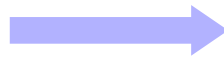


electron flow direction

Initial large current

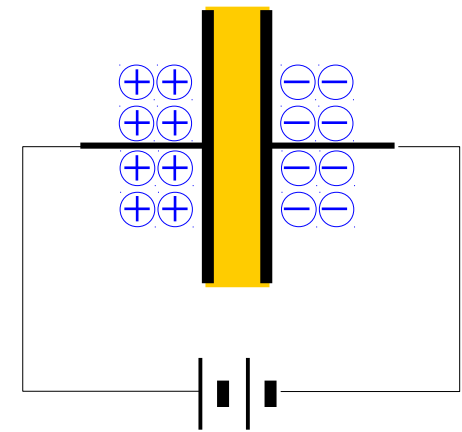
## Under Positively Charging

(+) current flow direction



electron flow direction

## Positively Charged State



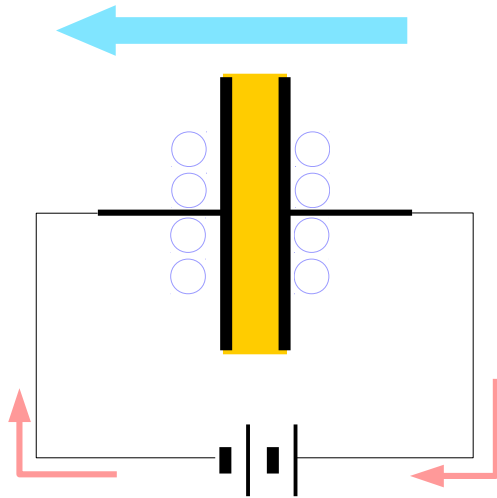
Crowded →  
No more space

no current

# Inter-State Current Flowing

## Fully Discharged State

(-) current flow direction

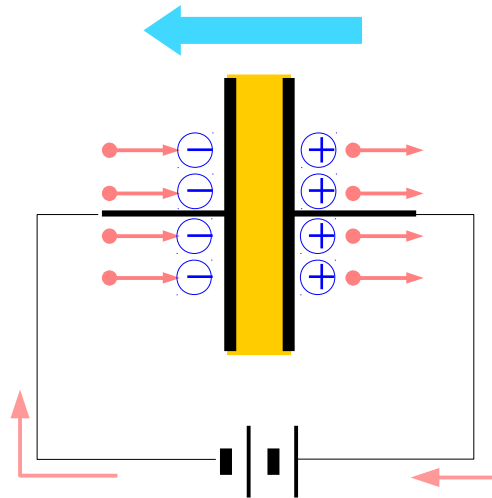


electron flow direction

Initial large current

## Under Negatively Charging

(-) current flow direction

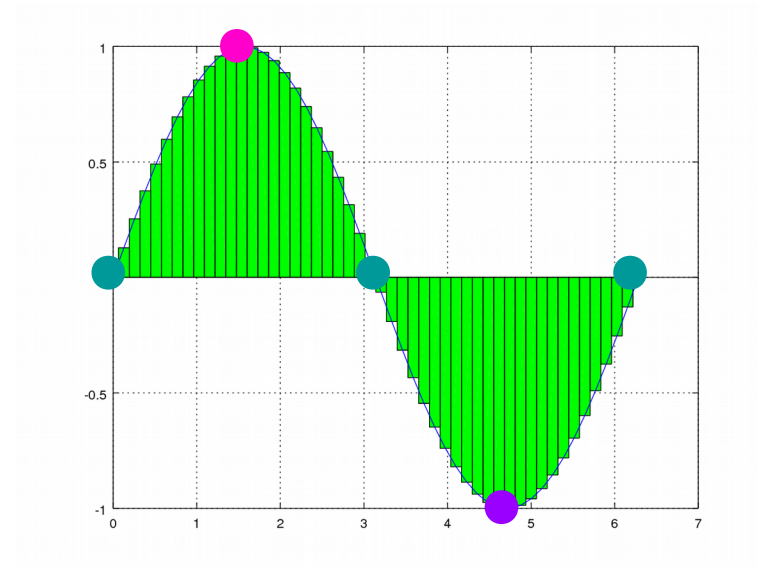
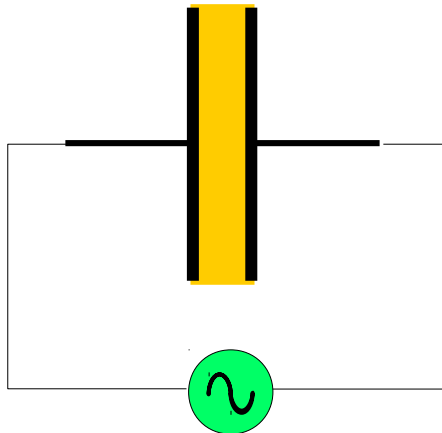


electron flow direction

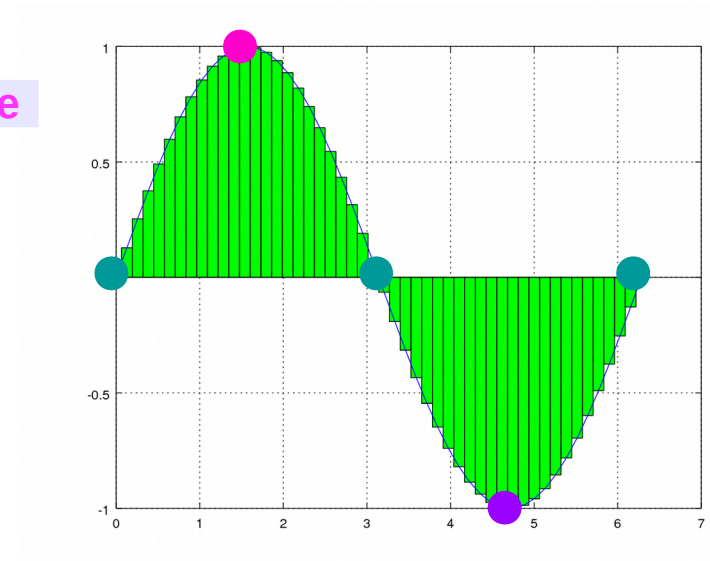
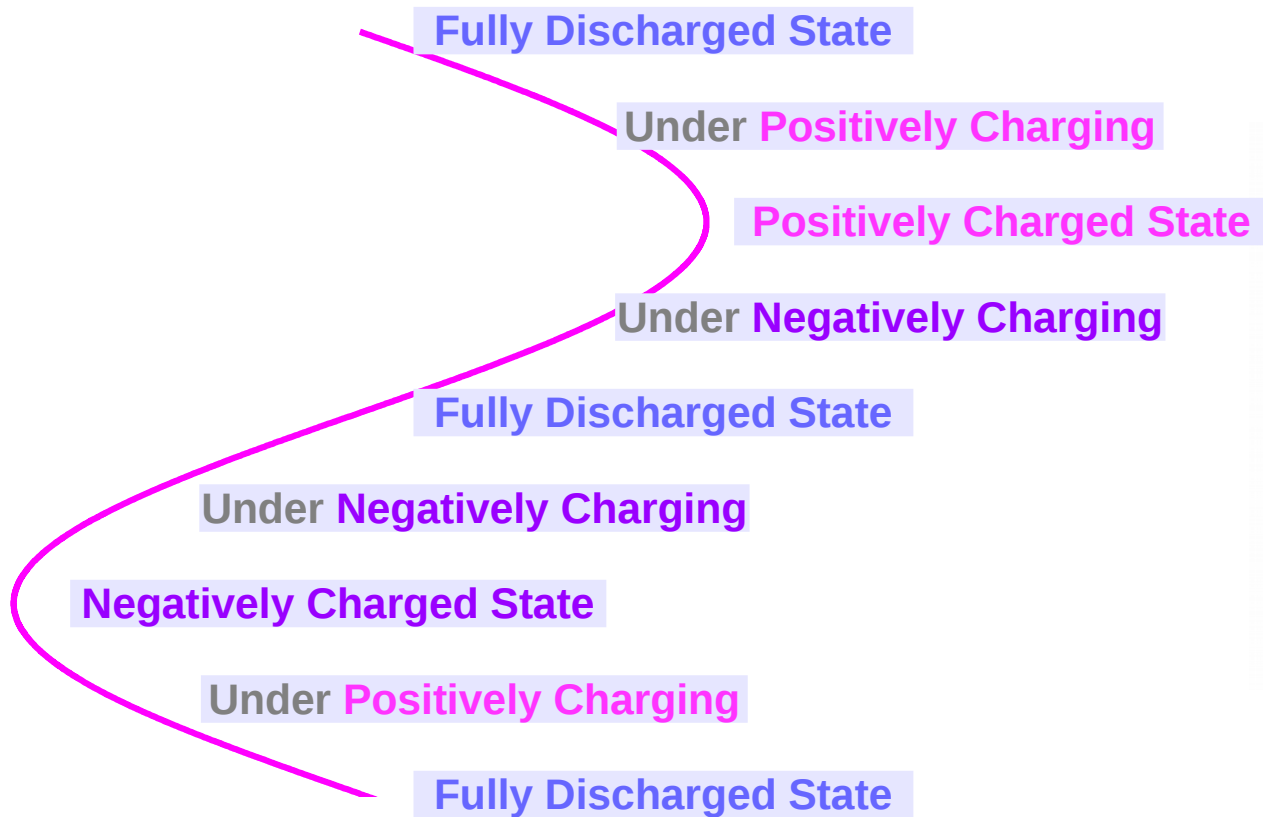
Crowded →  
No more space

no current

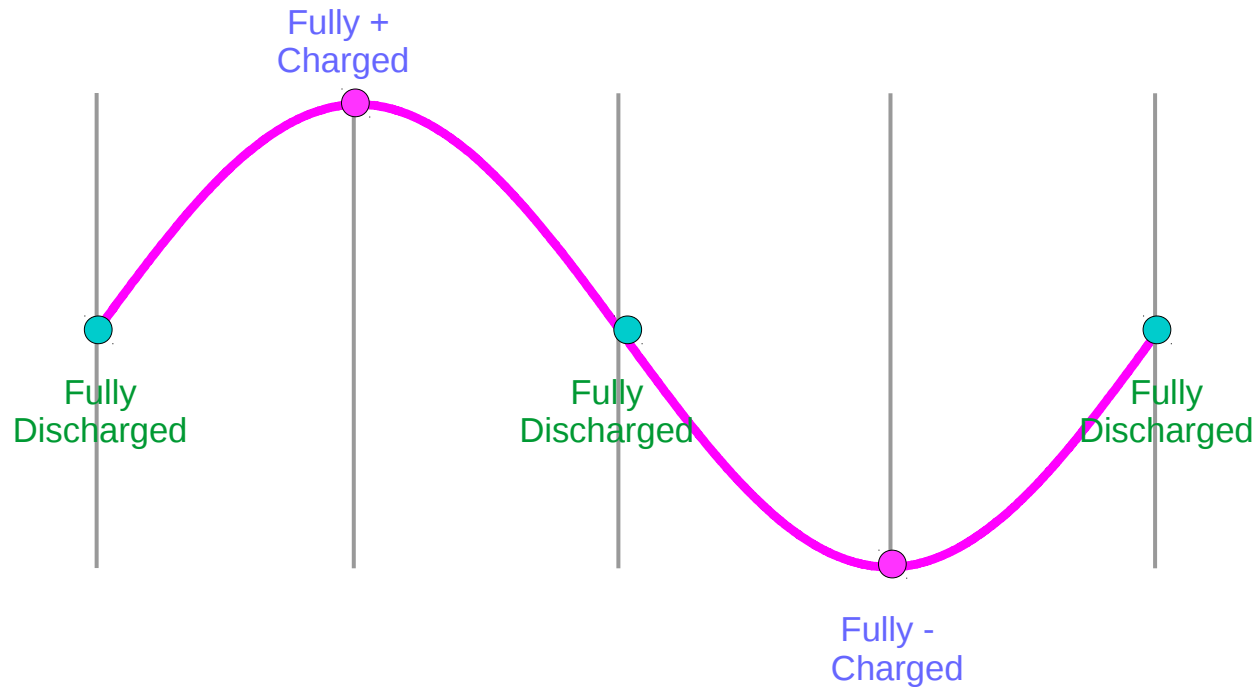
# An AC Voltage Source



# An AC Voltage Source

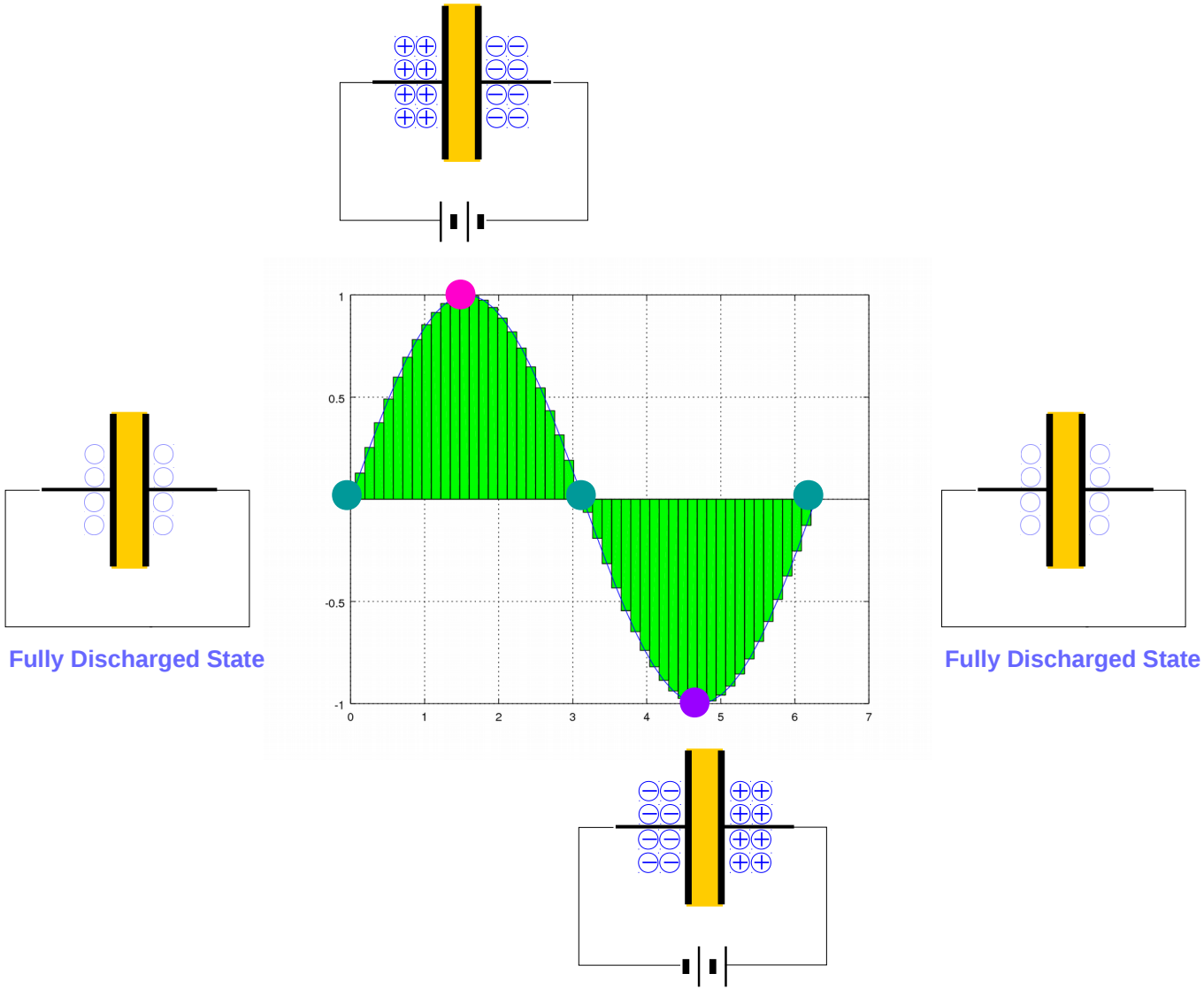


# Fully Charged and Fully Discharged

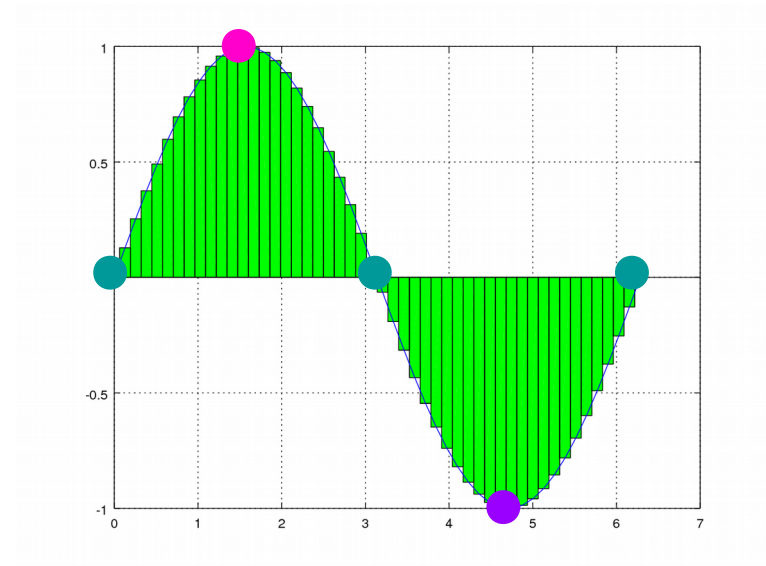
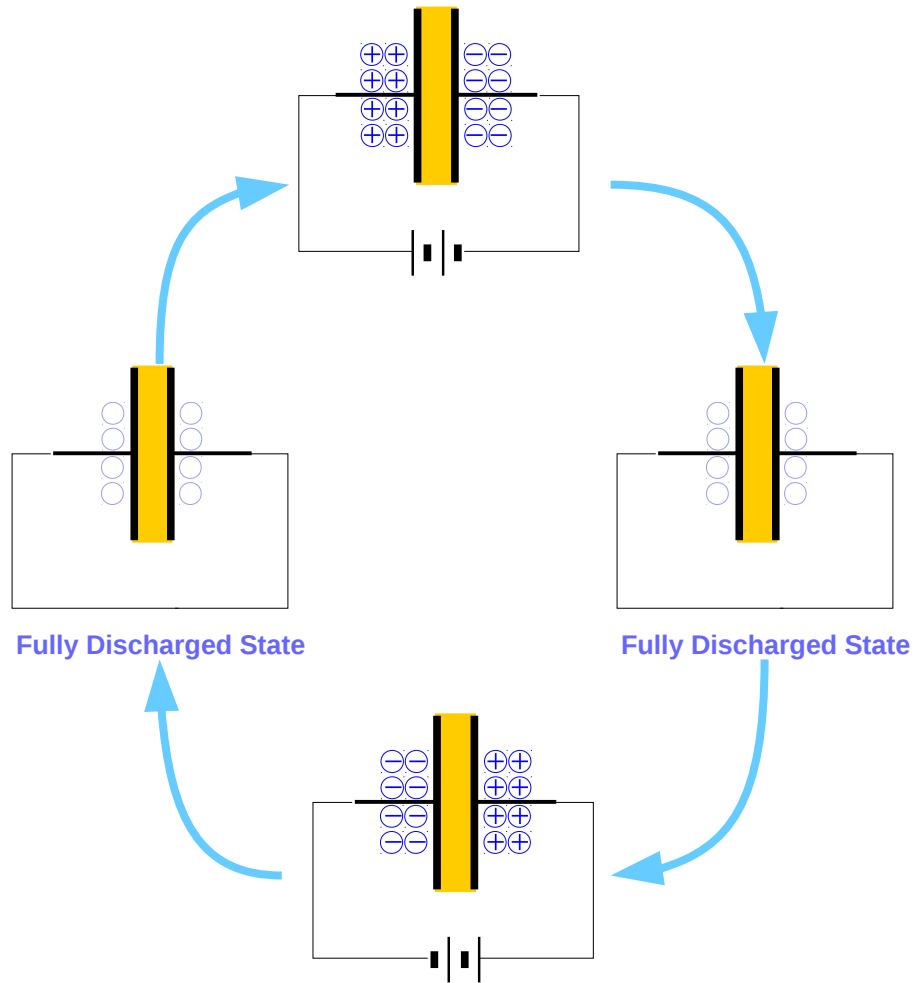


(+) Charging	(-) Charging	(-) Charging	(+) Charging
(+) current	(-) current	(-) current	(+) current
(+) Charging	(+) <b>Discharging</b>	(-) Charging	(-) <b>Discharging</b>

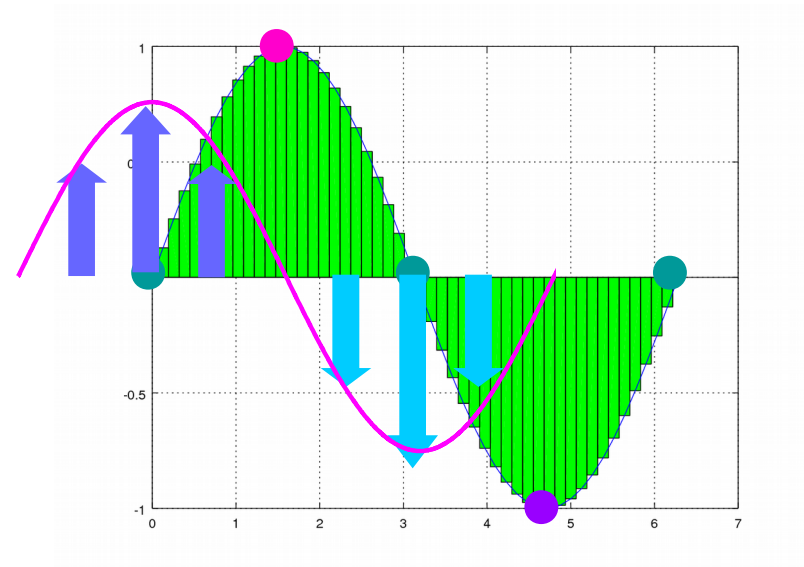
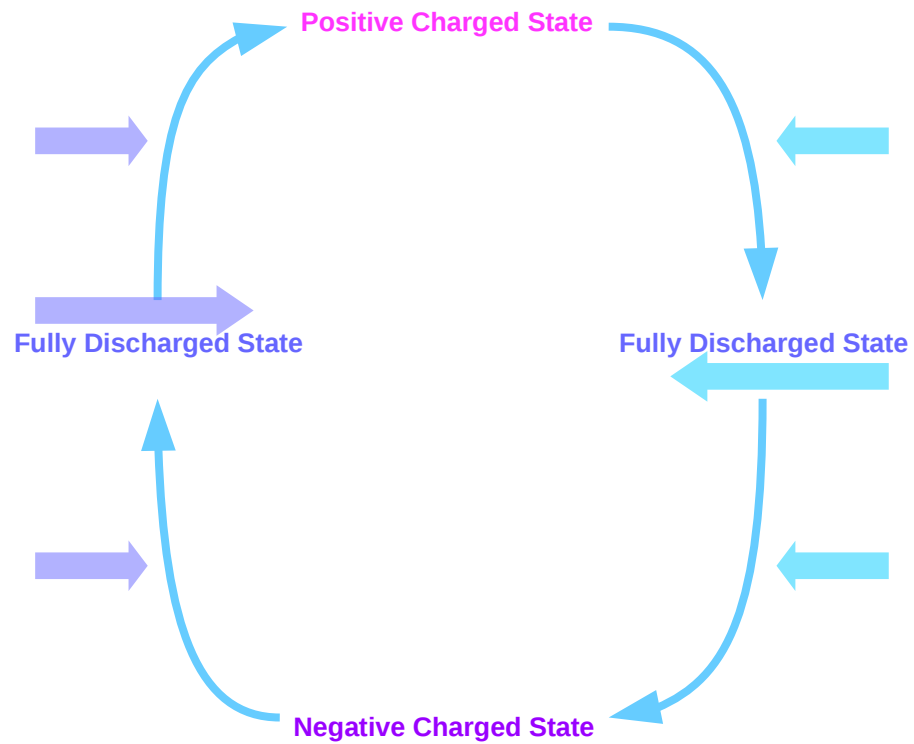
# A Cycle



# State Transition Diagram



# Current Flow

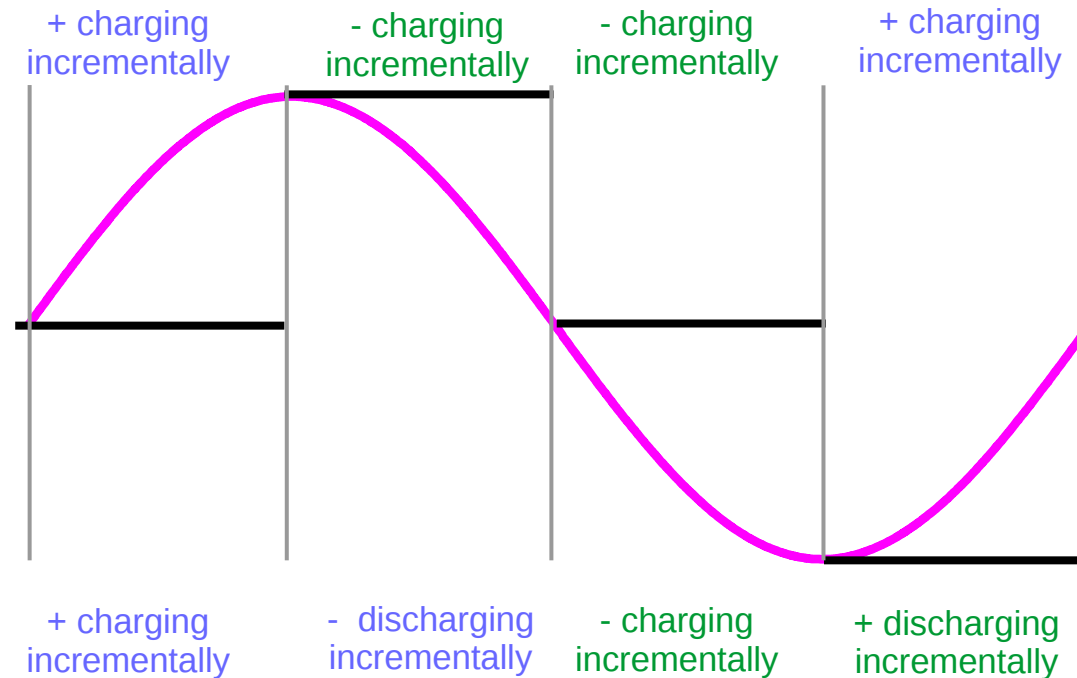




# Continuous Charging and Discharging Operations

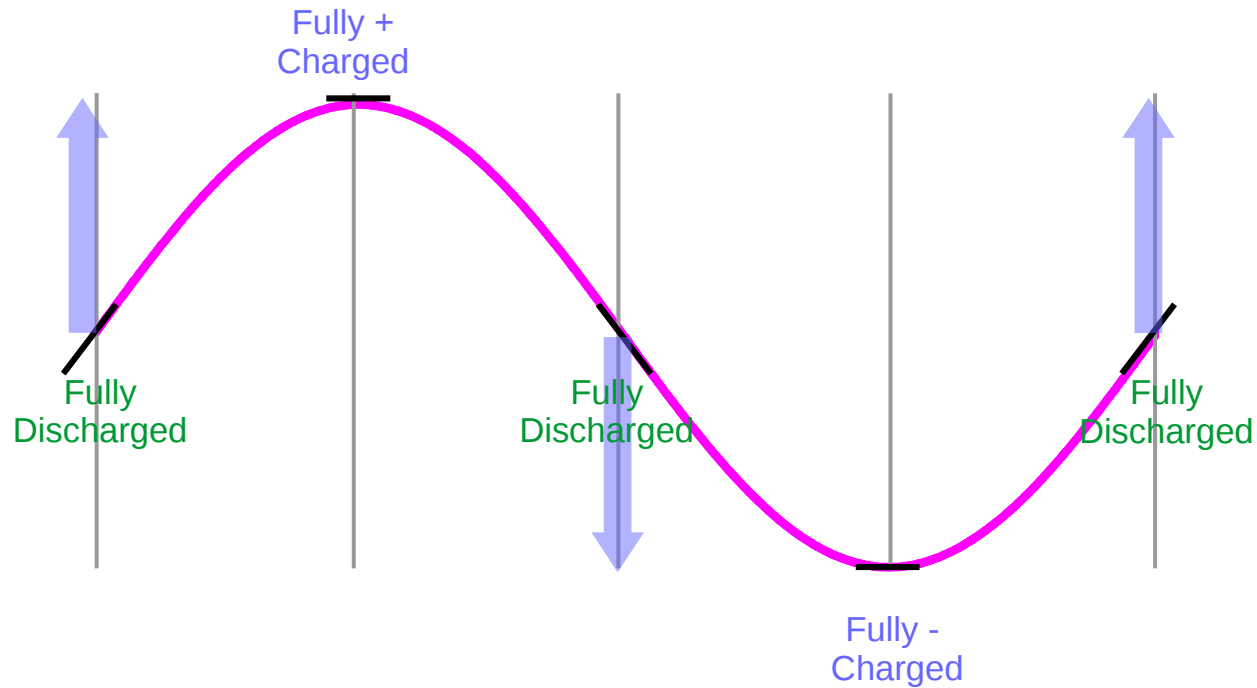
Incremental Voltage Increment  $\rightarrow$  + Charging incrementally

Incremental Voltage Decrement  $\rightarrow$  - Charging incrementally

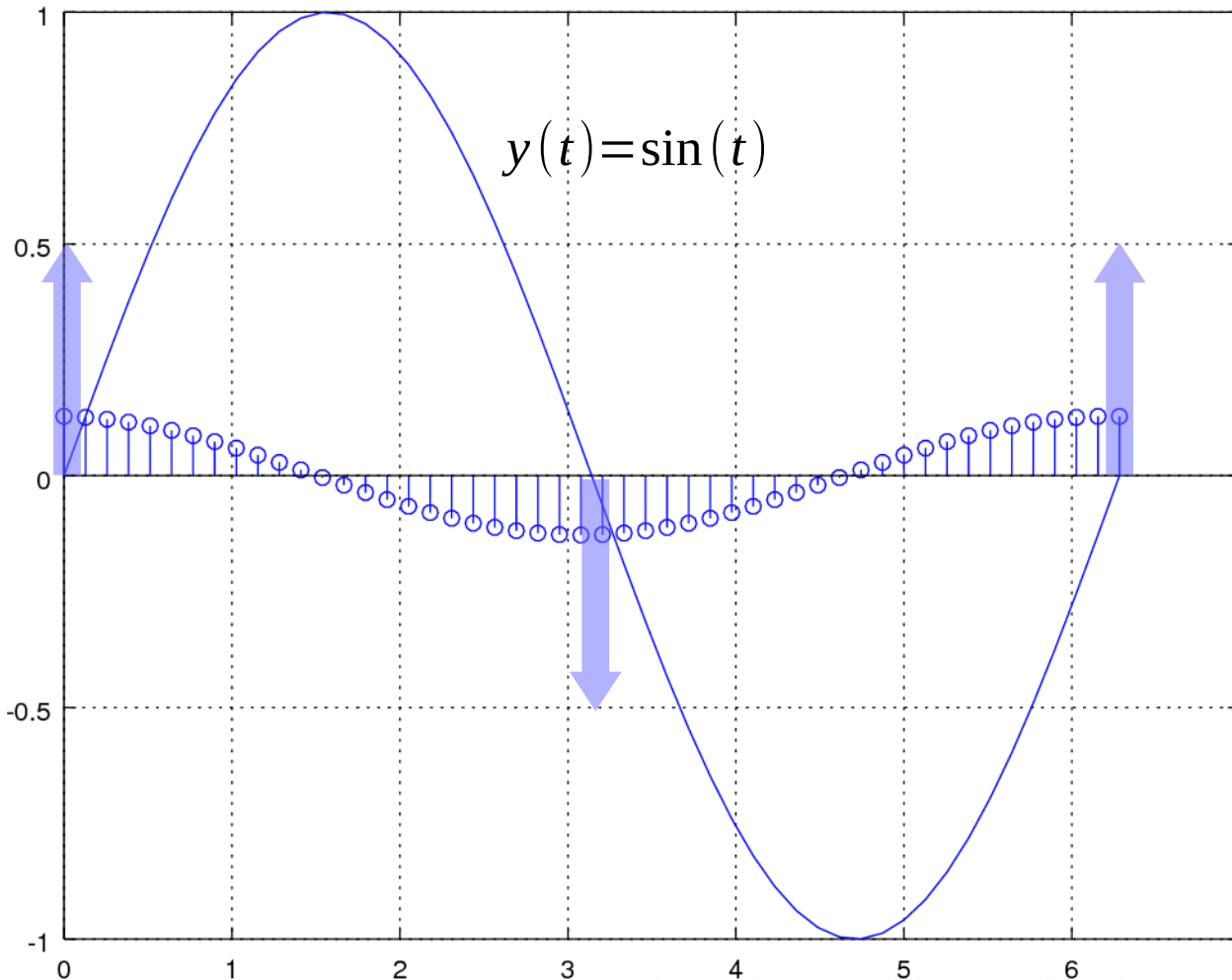


# Fully Discharged : Large Current

Incremental Voltage Increment → Continuous Charging  
Incremental Voltage Decrement → Continuous Discharging



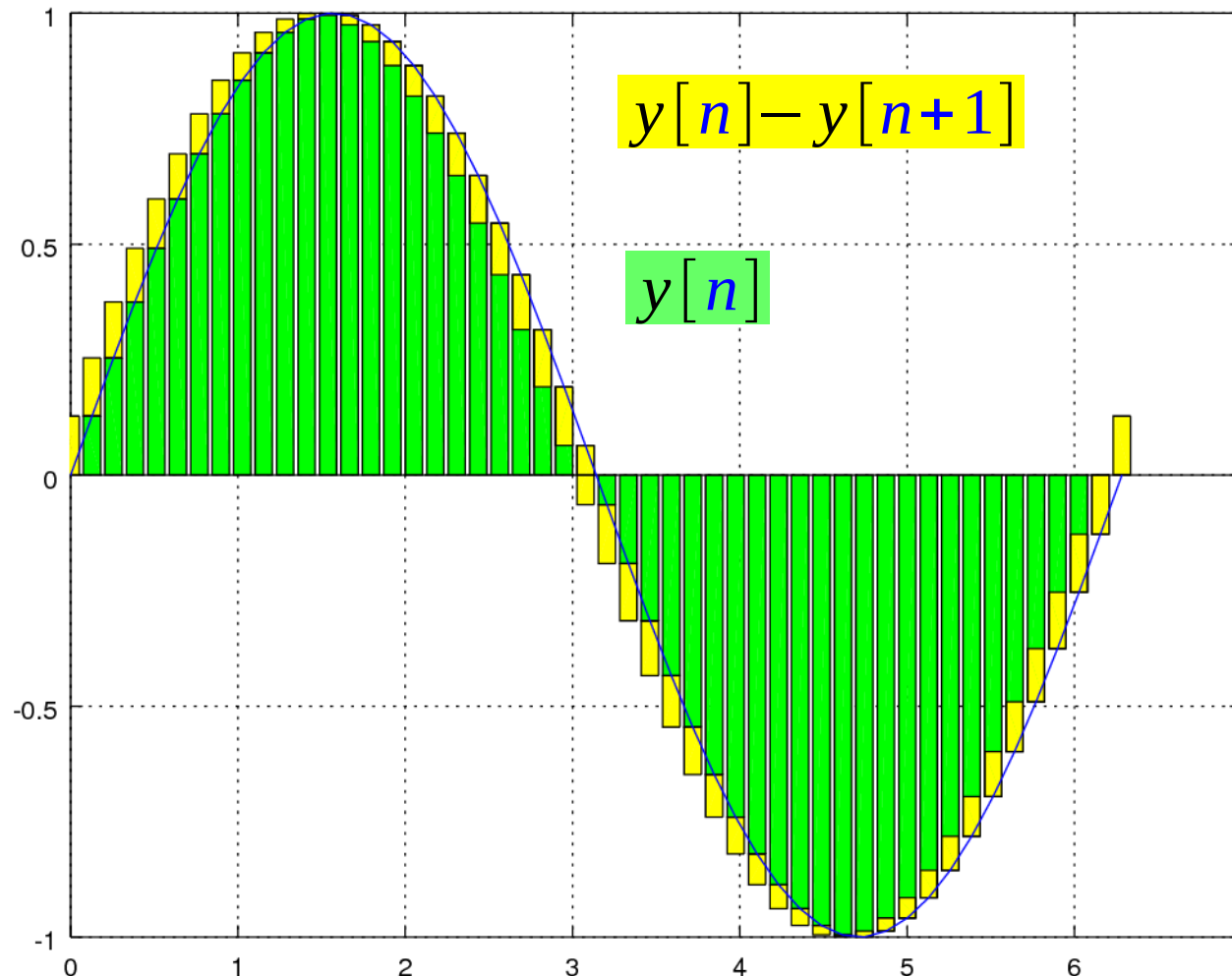
# $y[n+1] - y[n]$



```
t = linspace(0, pi*2, 50);  
t1 = t;  
t2 = t + t(2);  
y1 = sin(t1);  
y2 = sin(t2) - sin(t1);  
stem(t1, y2)  
hold on  
plot(t1, y1)
```

$$y[n] - y[n+1] = y(nT) - y((n+1)T) = \sin(nT) - \sin((n+1)T)$$

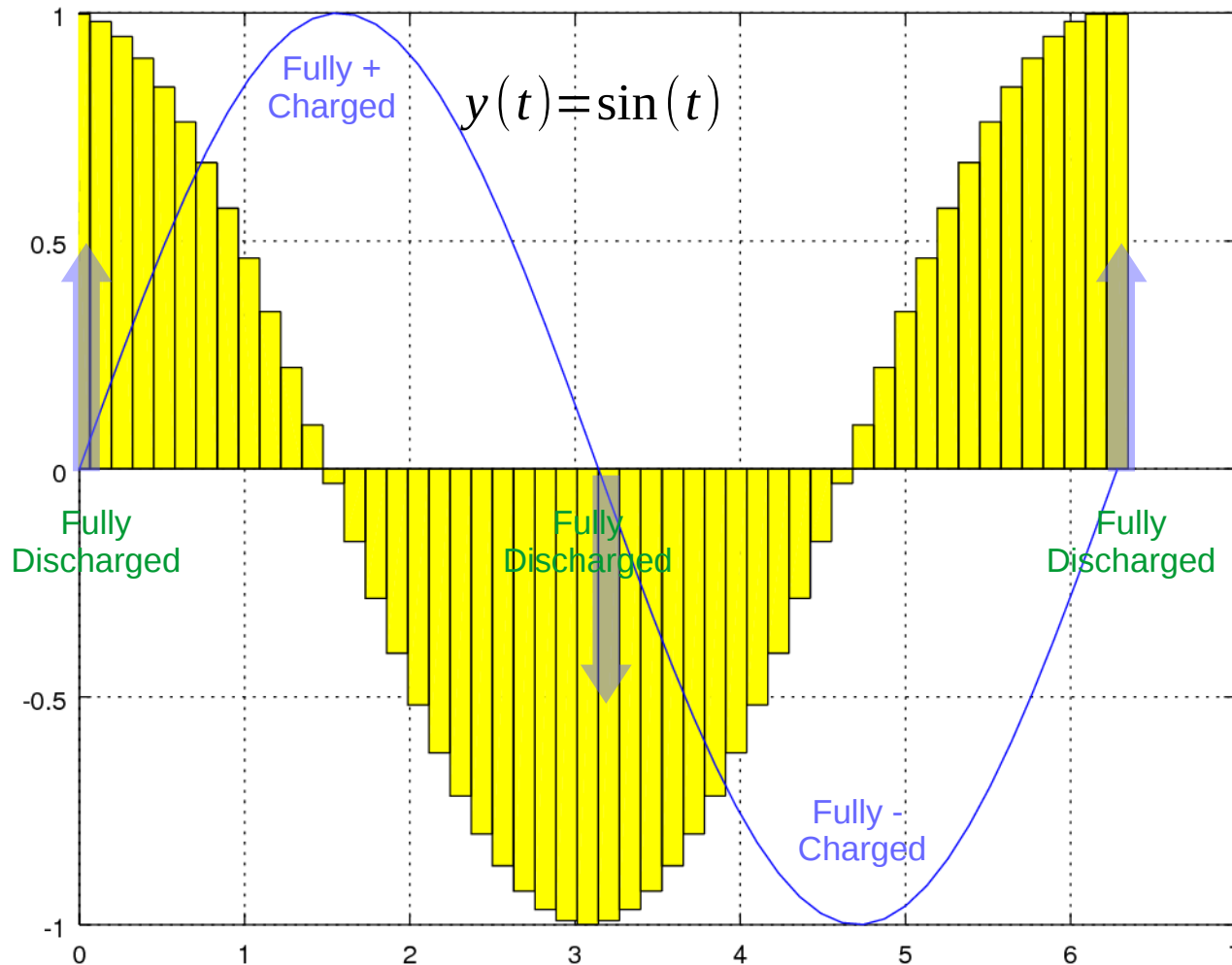
# Fully Charged and Fully Discharged



```
h = bar(t1, [y1' y2'],  
"stacked")  
set(h(1), "facecolor", "g");  
set(h(2), "facecolor", "y");  
hold on  
plot(t1, y1)  
axis([0 7 -1 1]);
```

$$y[n] - y[n+1] = y(nT) - y((n+1)T) = \sin(nT) - \sin((n+1)T)$$

# Fully Charged and Fully Discharged

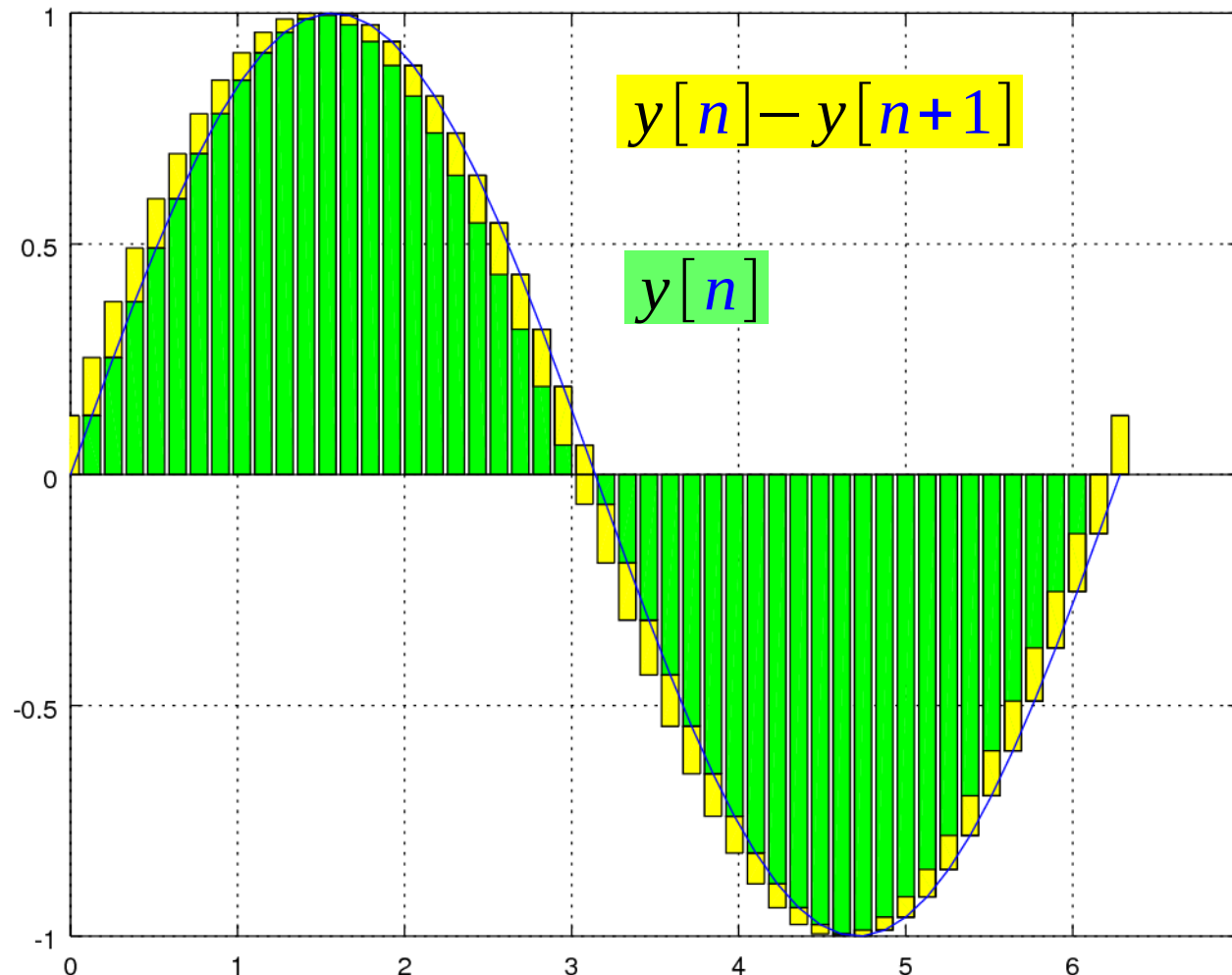


```
h = bar(t1, y2/t(2), "hist")
set(h(1), "facecolor", "y");
hold on
plot(t1, y1)
axis([0 7 -1 1]);
```

$$\frac{y[n] - y[n+1]}{T}$$

$$\propto \frac{dy}{dt}$$

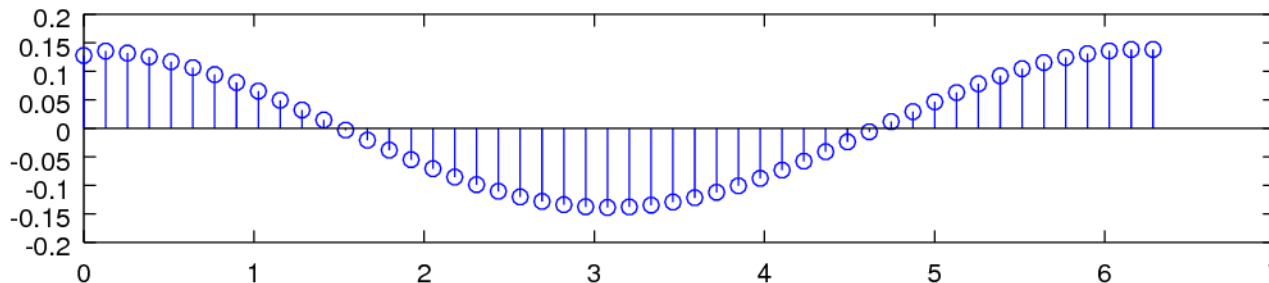
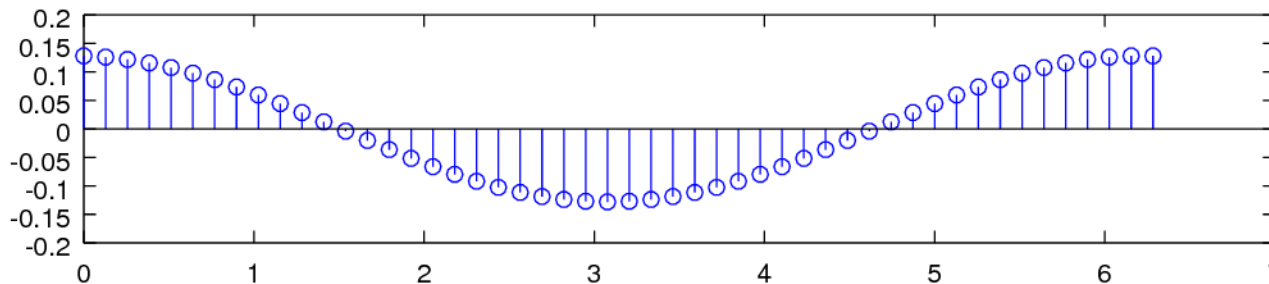
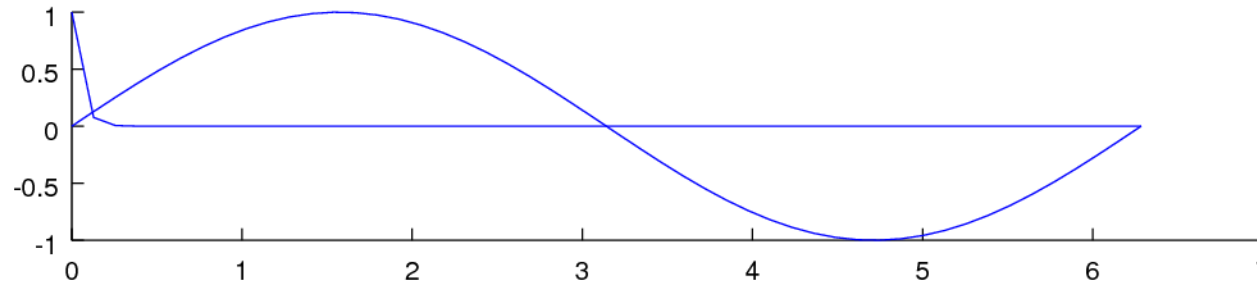
# Fully Charged and Fully Discharged



```
h = bar(t1, [y1' y2'],  
"stacked")  
set(h(1), "facecolor", "g");  
set(h(2), "facecolor", "y");  
hold on  
plot(t1, y1)  
axis([0 pi]);
```

$$y[n] - y[n+1] = y(nT) - y((n+1)T) = \sin(nT) - \sin((n+1)T)$$

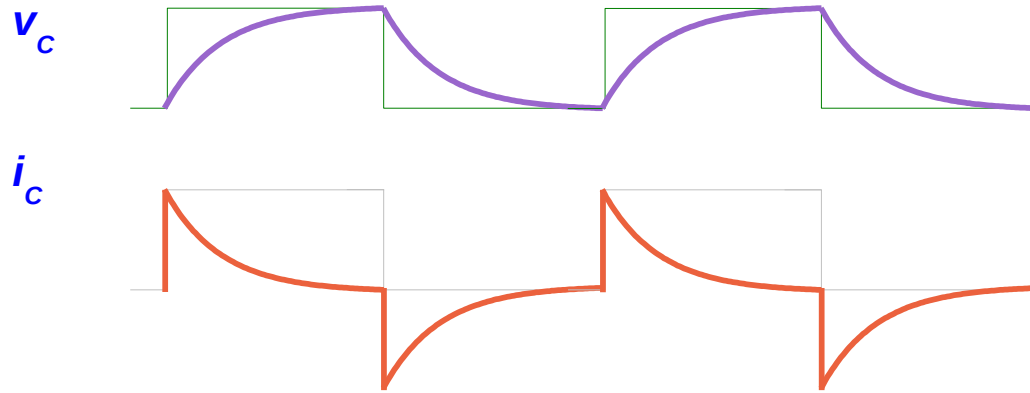
# Fully Charged and Fully Discharged



```
clf
t = linspace(0, pi*2, 50);
t1 = t;
t2 = t + t(2);
y1 = sin(t1);
y2 = sin(t2) - sin(t1);
y3 = e.^(-20*t);
y4 = conv(y2, y3);
y5 = y4([1:length(t1)]);
```

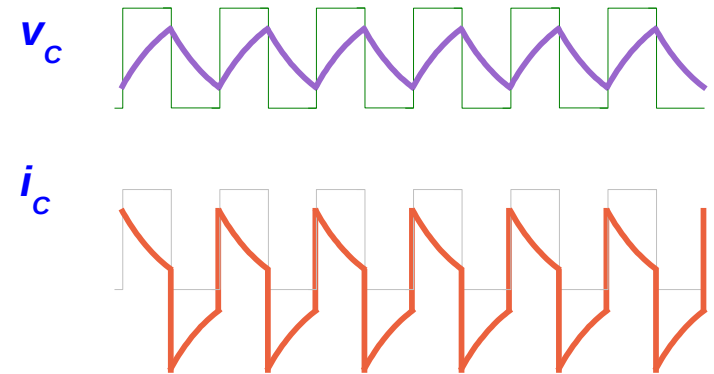
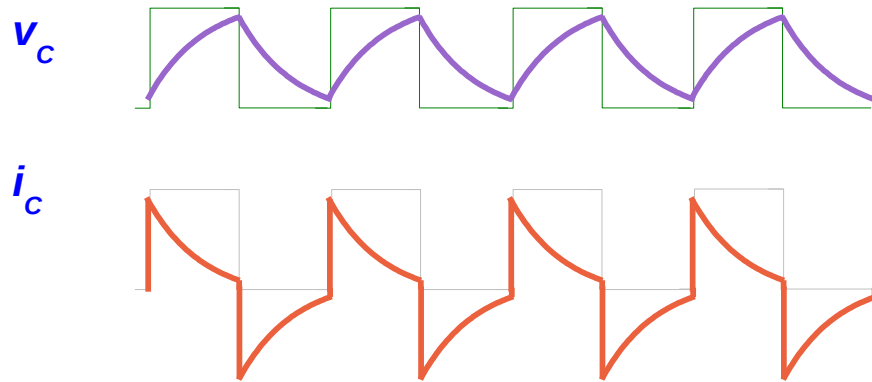
```
subplot(3, 1, 2);
stem(t1, y2)
subplot(3, 1, 1);
hold on
plot(t1, y1);
plot(t1, y3);
subplot(3, 1, 3);
stem(t1, y5);
```

# Pulse



$$i_c = C \frac{dv_c}{dt}$$

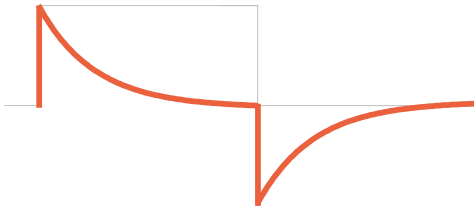
$\omega$  ↑    $i_c$  ↑    $X_c$  ↓



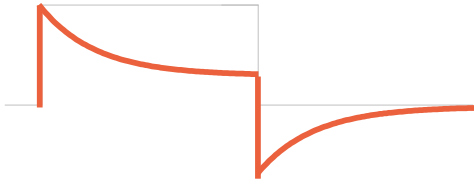


# Time Constants

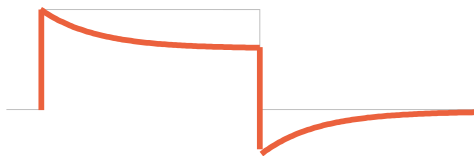
$i_c$



$\tau = RC$  *small time constant*

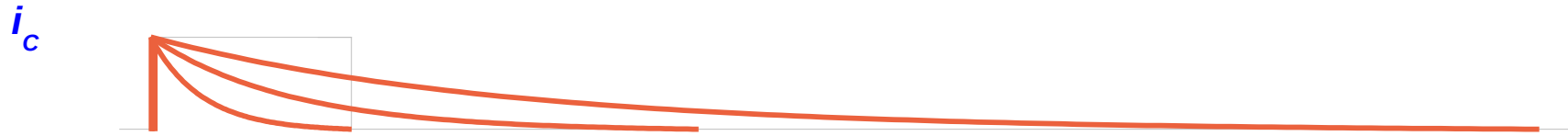


$\tau = RC$  *medium time constant*



$\tau = RC$  *large time constant*

# Time Constants



$$\tau_1 < \tau_2 < \tau_3$$

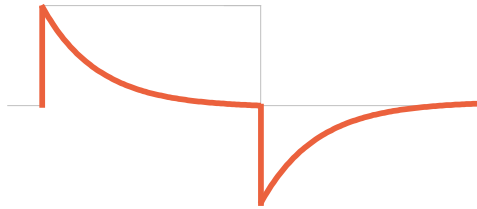
$$a_1 > a_2 > a_3$$

$$e^{-\frac{t}{\tau}} = e^{-\frac{t}{RC}} = e^{-at}$$

$$\tau = RC = \frac{1}{a}$$

# Time Constants

$i_c$



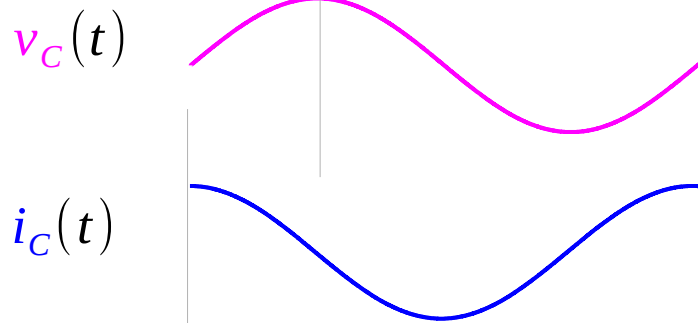
$$\tau = RC$$

$$e^{-\frac{t}{\tau}} = e^{-\frac{t}{RC}}$$

*small  $\tau$*   
*small  $C$*

$$\text{large } \frac{1}{\omega C} \gg R$$

Fully Capacitive



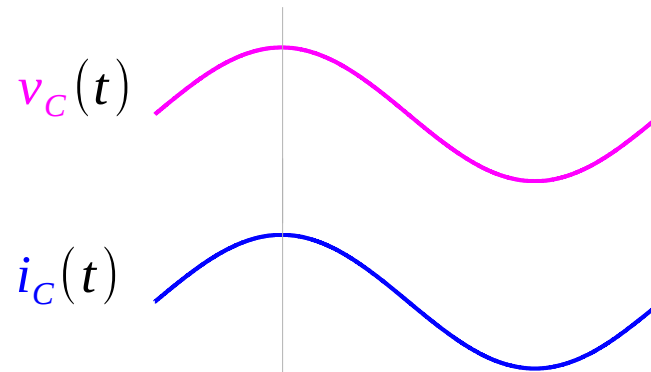
$$\tau = RC$$

$$e^{-\frac{t}{\tau}} = e^{-\frac{t}{RC}}$$

*large  $\tau$*   
*large  $C$*

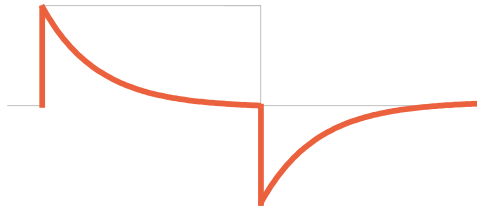
$$\text{small } \frac{1}{\omega C} \ll R$$

Fully Resistive



# Time Constants

$i_c$

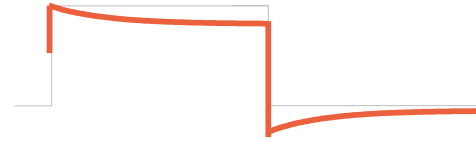


$$\tau = RC$$
$$e^{-\frac{t}{\tau}} = e^{-\frac{t}{RC}}$$

*small  $\tau$*   
*small  $C$*

$$\text{large } \frac{1}{\omega C} \gg R$$

Fully Capacitive



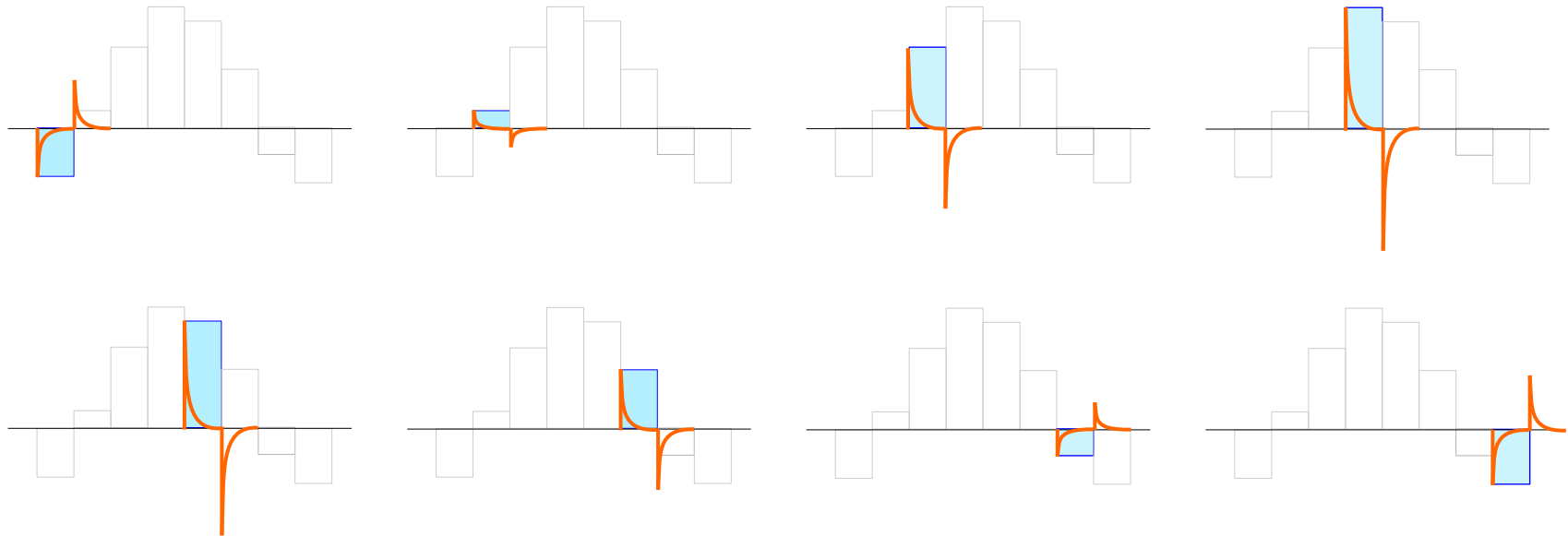
$$\tau = RC$$
$$e^{-\frac{t}{\tau}} = e^{-\frac{t}{RC}}$$

*large  $\tau$*   
*large  $C$*

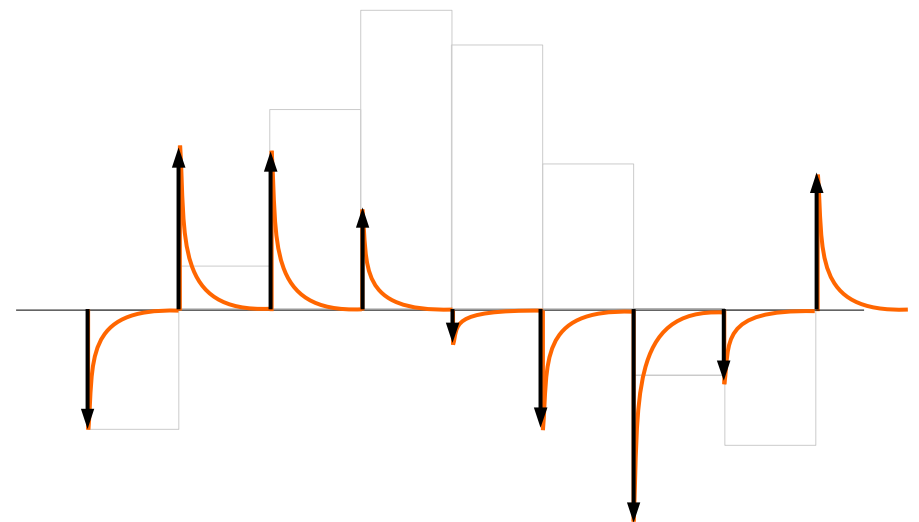
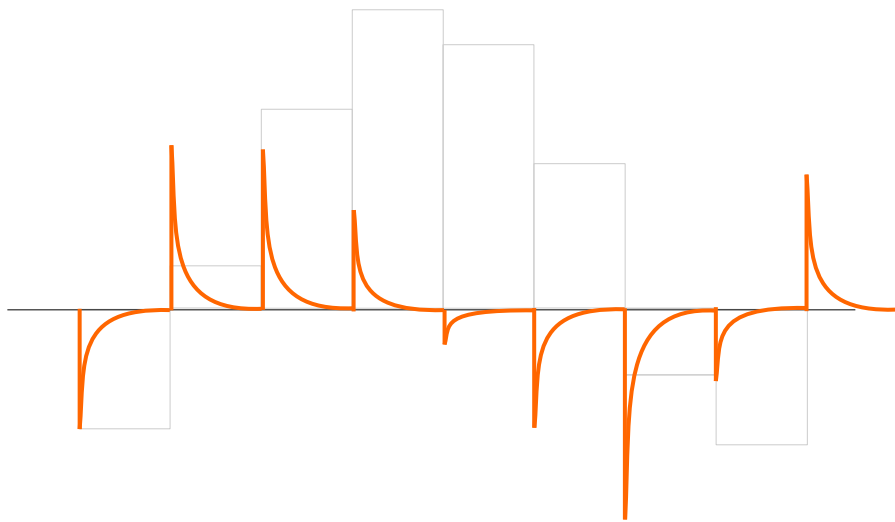
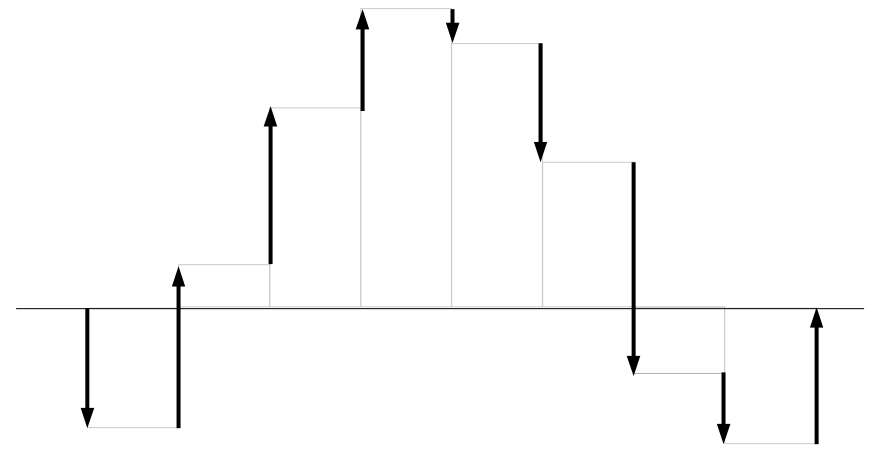
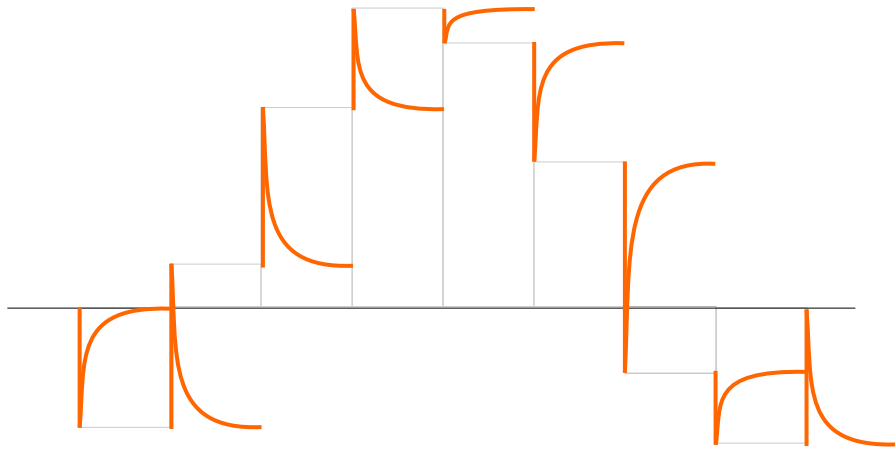
$$\text{small } \frac{1}{\omega C} \ll R$$

Fully Resistive

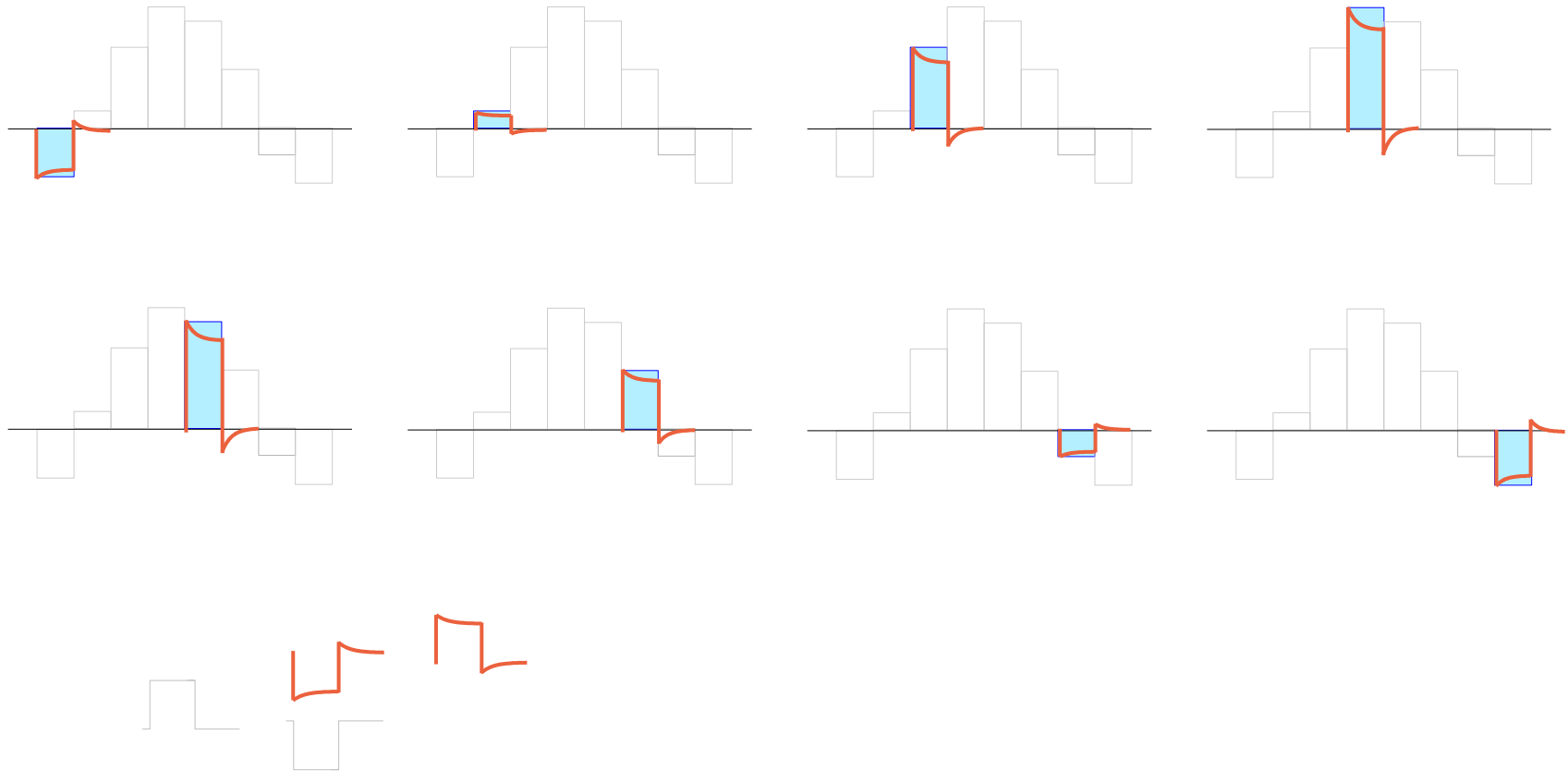
# Superposition - Small Time Constant



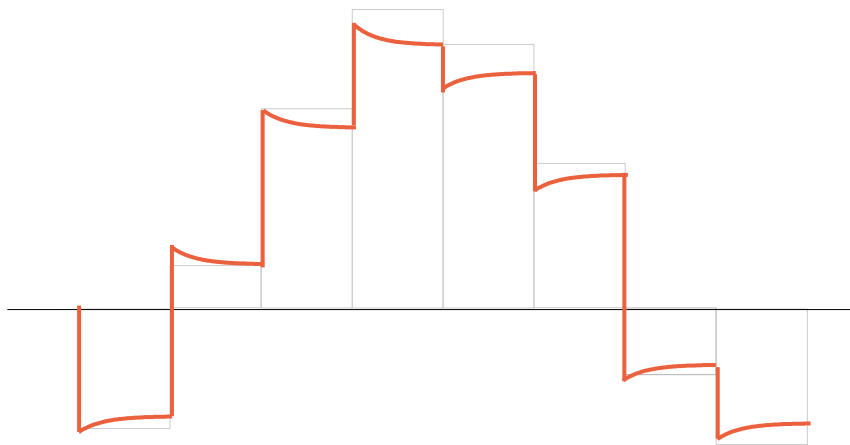
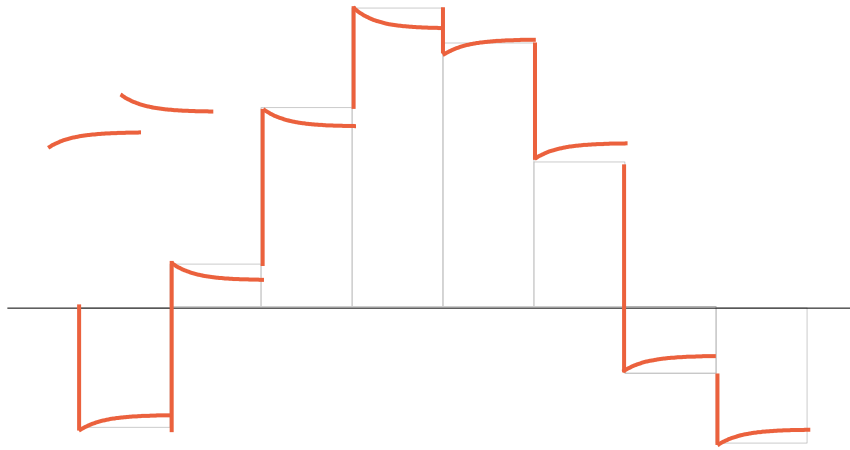
# Small Time Constants



# Superposition - Large Time Constant



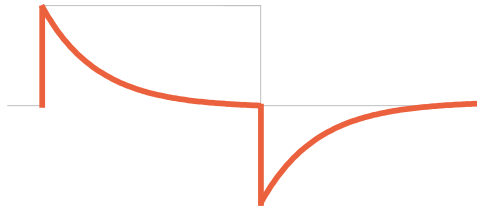
# Large Time Constants





# Time Constants

$i_c$



$$\tau = RC$$

$$e^{-\frac{t}{\tau}} = e^{-\frac{t}{RC}}$$

*small  $\tau$*   
*small  $C$*

$$\text{large } \frac{1}{\omega C} \gg R$$

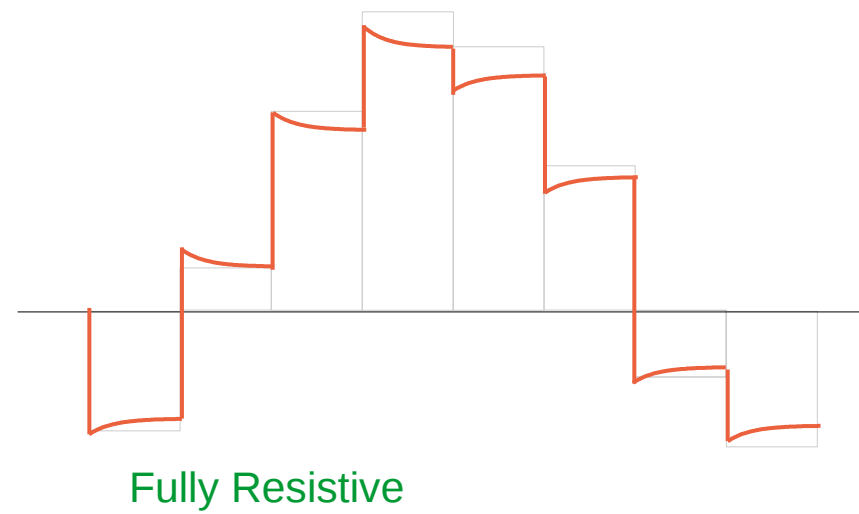
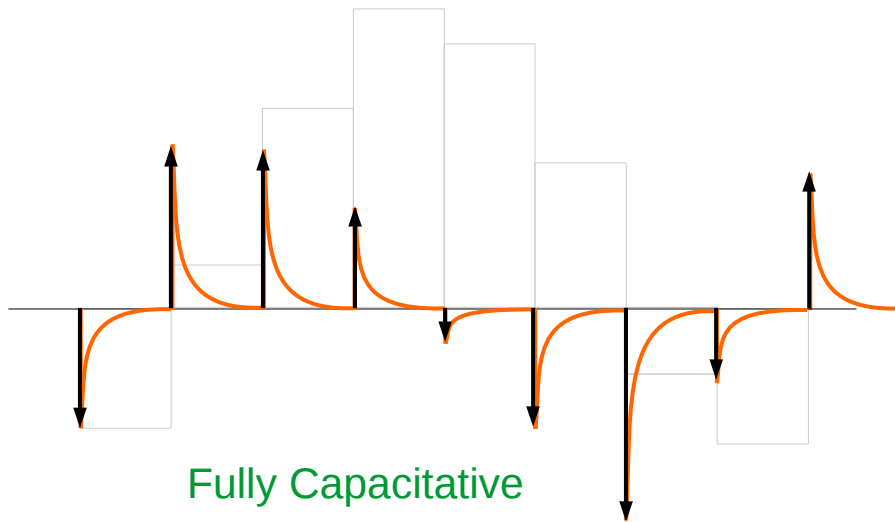


$$\tau = RC$$

$$e^{-\frac{t}{\tau}} = e^{-\frac{t}{RC}}$$

*large  $\tau$*   
*large  $C$*

$$\text{small } \frac{1}{\omega C} \ll R$$



# Plotting superposition results

```
clf
t = linspace(0, pi*2, 50);
tt= linspace(0, pi*2, 500);
N = length(t);
NN= length(tt);

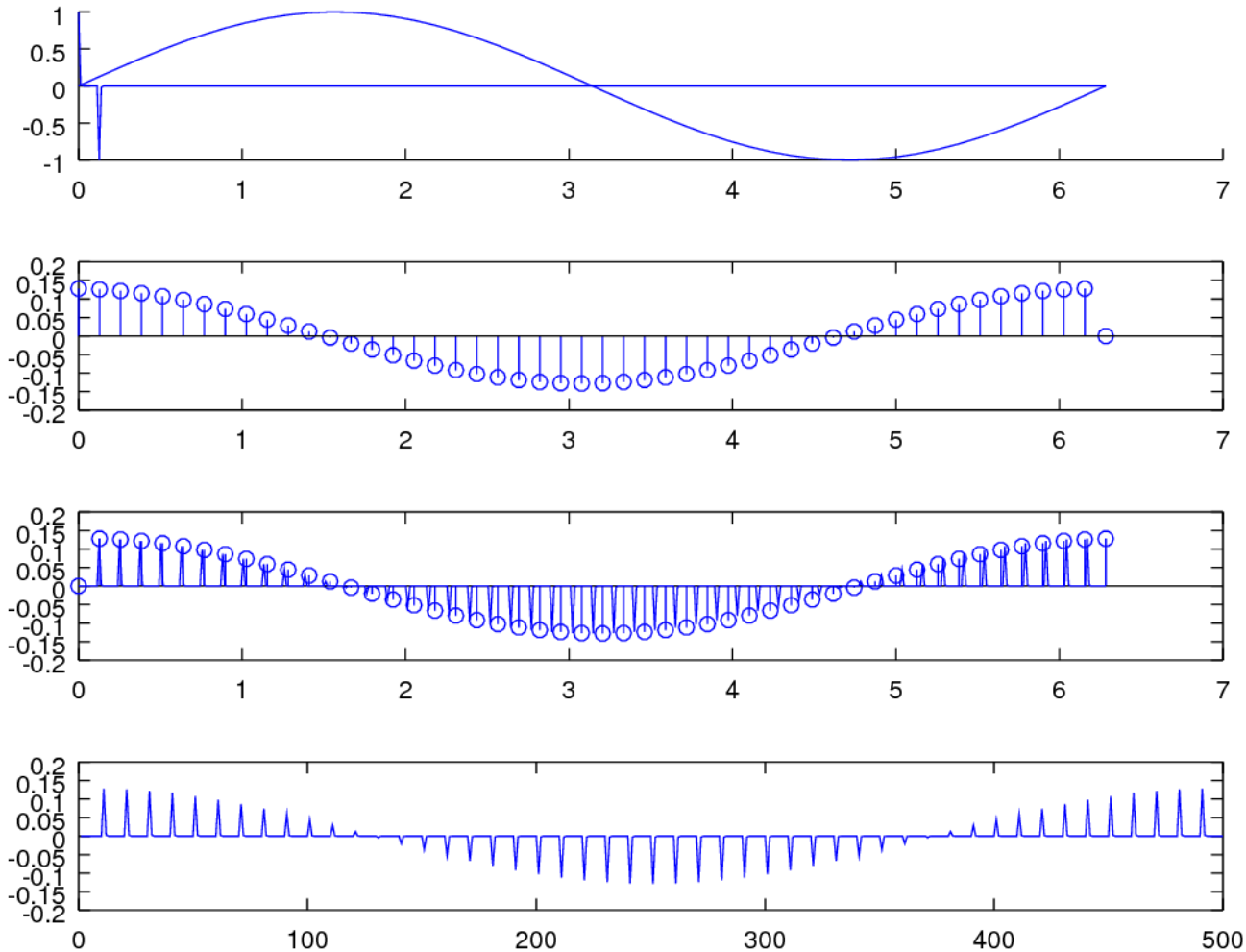
t1 = t;
t2 = [t(2:N), t(N)];
y1 = sin(t1);
y2 = sin(t2) - sin(t1);

yy = [y1; zeros(NN/N-1, N)];
yy2= yy(:)';
a = 1/300;
yy3= e.^(-a*tt);
yy3 =yy3 - [zeros(1, NN/N),
e.^(-a*tt)](1:NN);

svec = zeros(1, NN);
for i = 1:NN;
    tvec = zeros(1, NN);
    tvec = [zeros(1, i-1), yy3];
    tvec = yy2(i) * tvec(1:NN);
    svec = svec + tvec;
endfor
yy4 = svec;
% yy4= conv(yy2, yy3);
y5 = yy4([1:NN/N:NN]);
yy5= yy4([1:NN]);

subplot(4, 1, 2);
stem(t1, y2)
subplot(4, 1, 1);
hold on
plot(t1, y1);
plot(tt, yy3);
subplot(4, 1, 3);
stem(t1, y5); hold on
plot(tt, yy5)
subplot(4, 1, 4);
plot(yy4);
```

# Small Time Constant



```
yy = [y1;  
zeros(NN/N-1, N)];  
yy2= yy(:)';  
a = 300;  
yy3= e.^(-a*tt);  
yy3 =yy3 -  
[zeros(1, NN/N),  
e.^(-a*tt)](1:NN);
```

$$\tau = RC$$

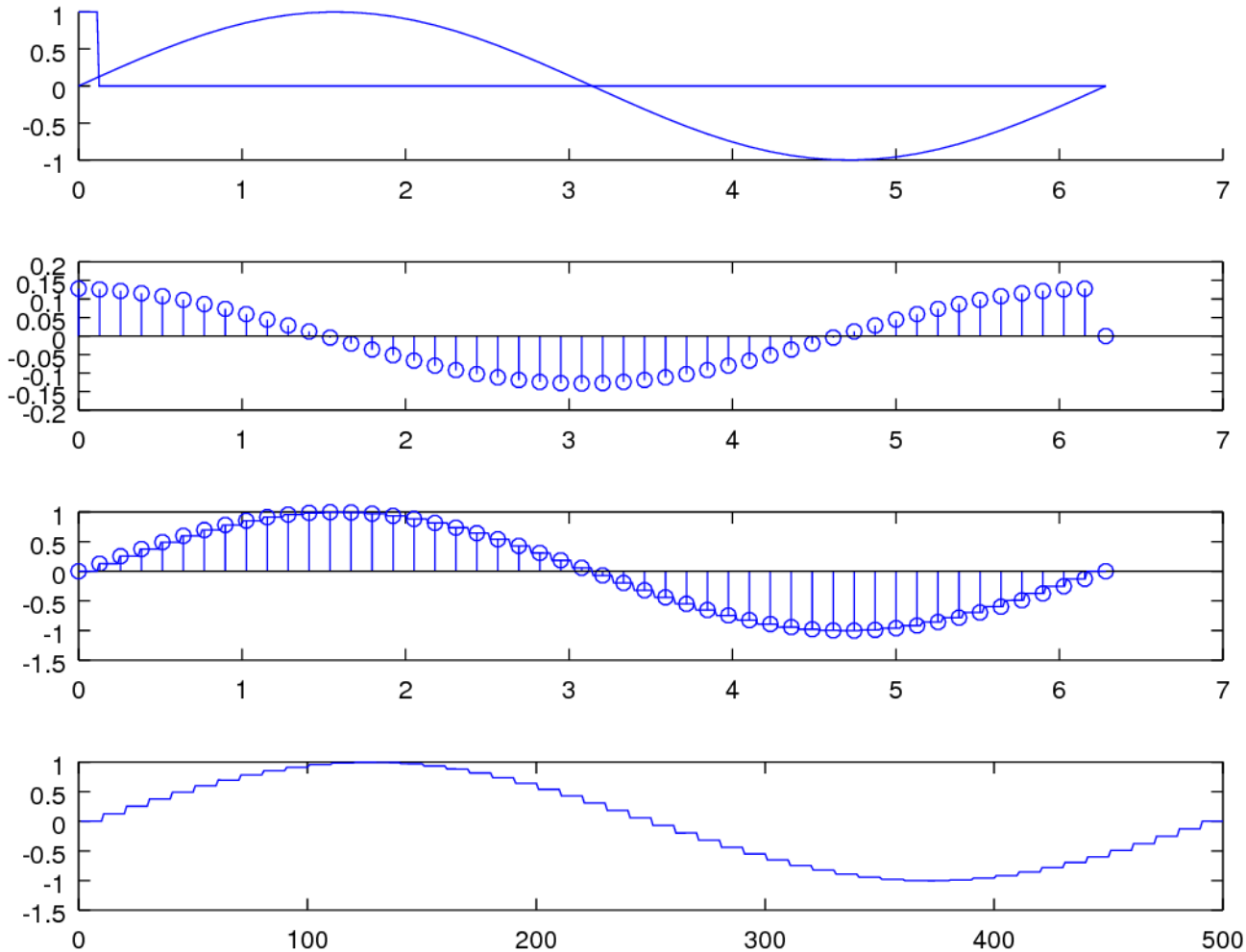
$$e^{-\frac{t}{\tau}} = e^{-\frac{t}{RC}}$$

*small*  $\tau$

*small*  $C$

*large*  $\frac{1}{\omega C}$

# Large Time Constant



```
yy = [y1;
zeros(NN/N-1, N)];
yy2= yy(:)';
a = 1/300;
yy3= e.^(-a*tt);
yy3 =yy3 -
[zeros(1, NN/N),
e.^(-a*tt)](1:NN);
```

$$\tau = RC$$

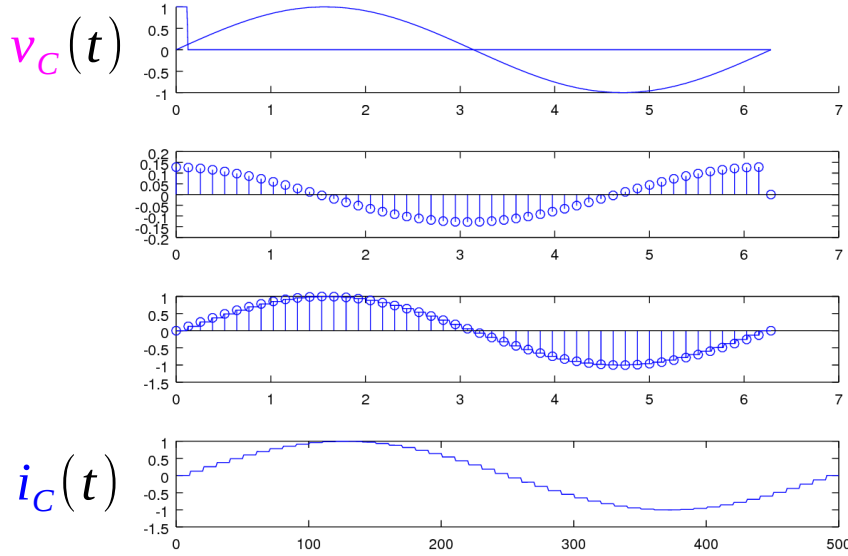
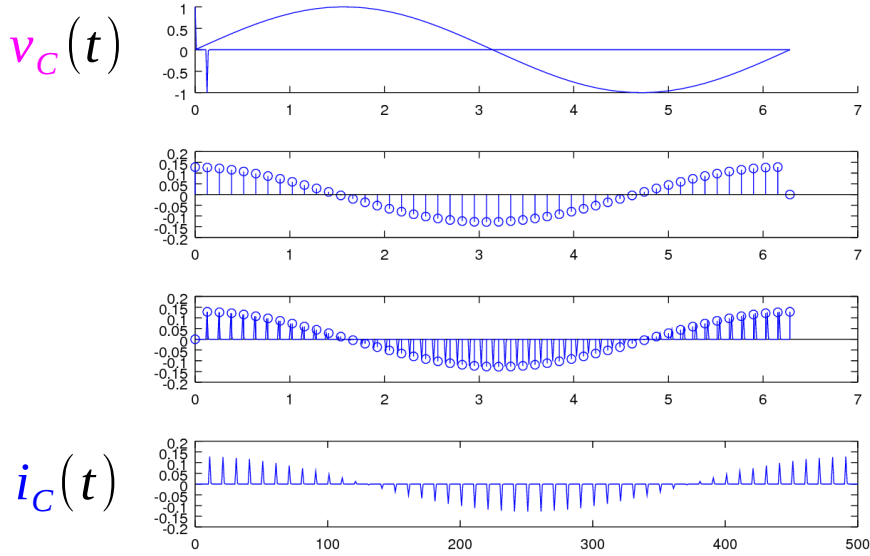
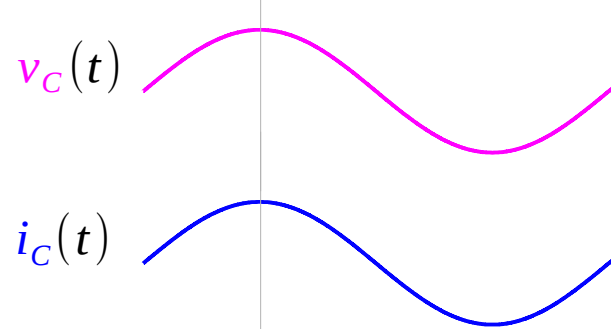
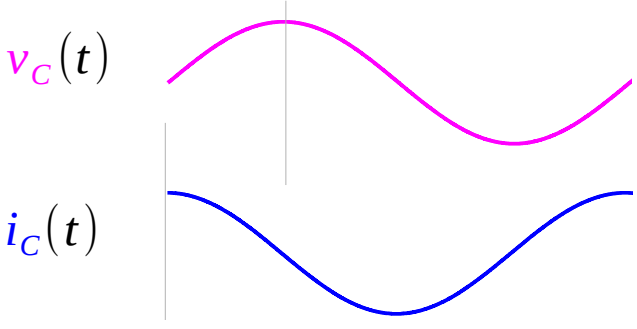
$$e^{-\frac{t}{\tau}} = e^{-\frac{t}{RC}}$$

large  $\tau$

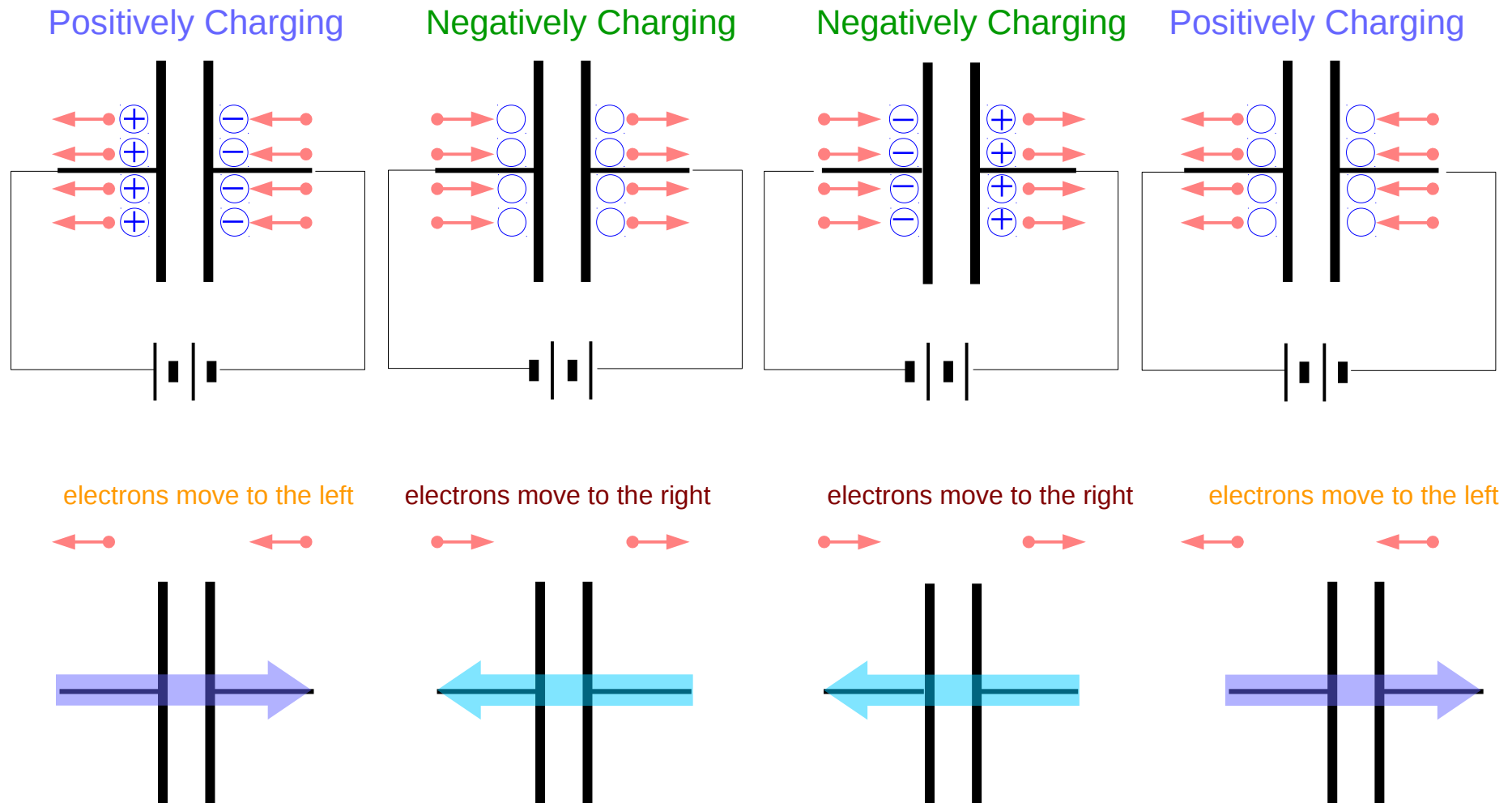
large  $C$

small  $\frac{1}{\omega C}$

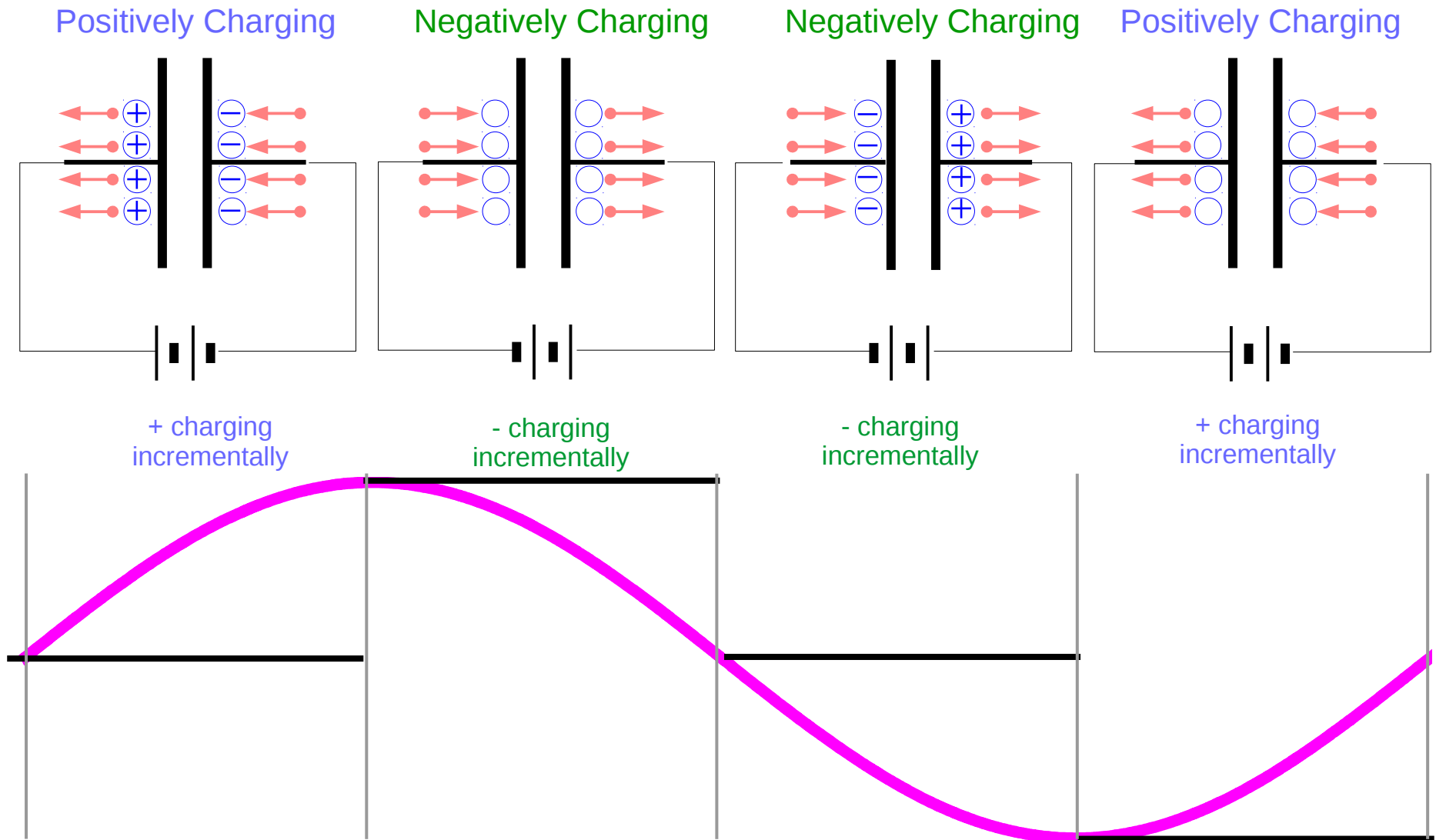
# Time Constants



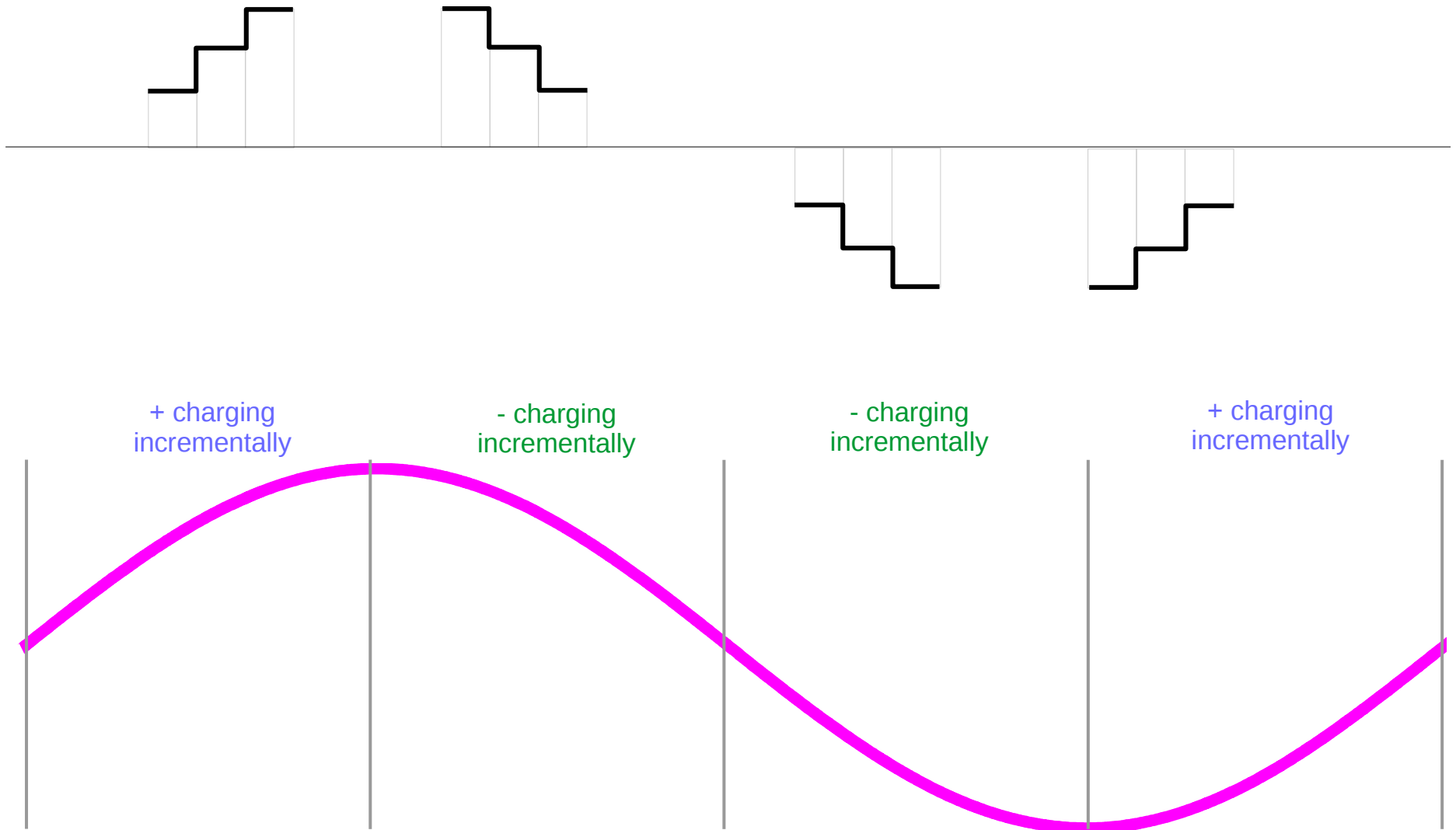
# Evercharging signal pairs



# Continuous Charging and Discharging Operations



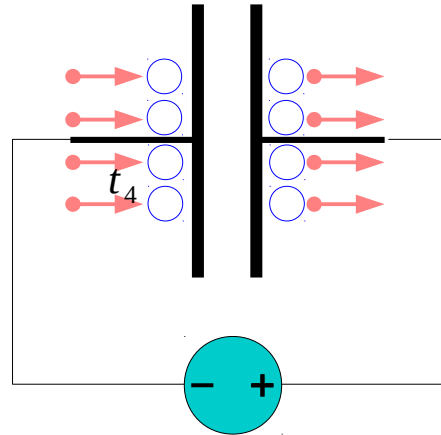
# Continuous Charging and Discharging Operations



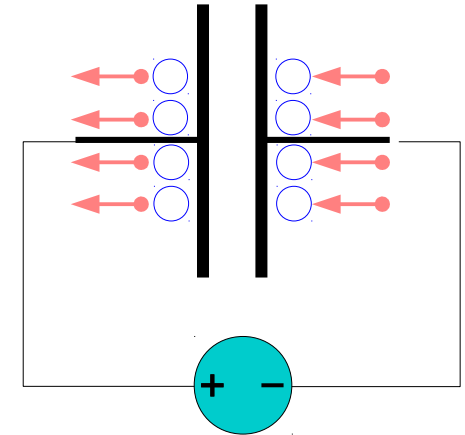


# Continuous Charging and Discharging Operations

Negatively Charging



Positively Charging

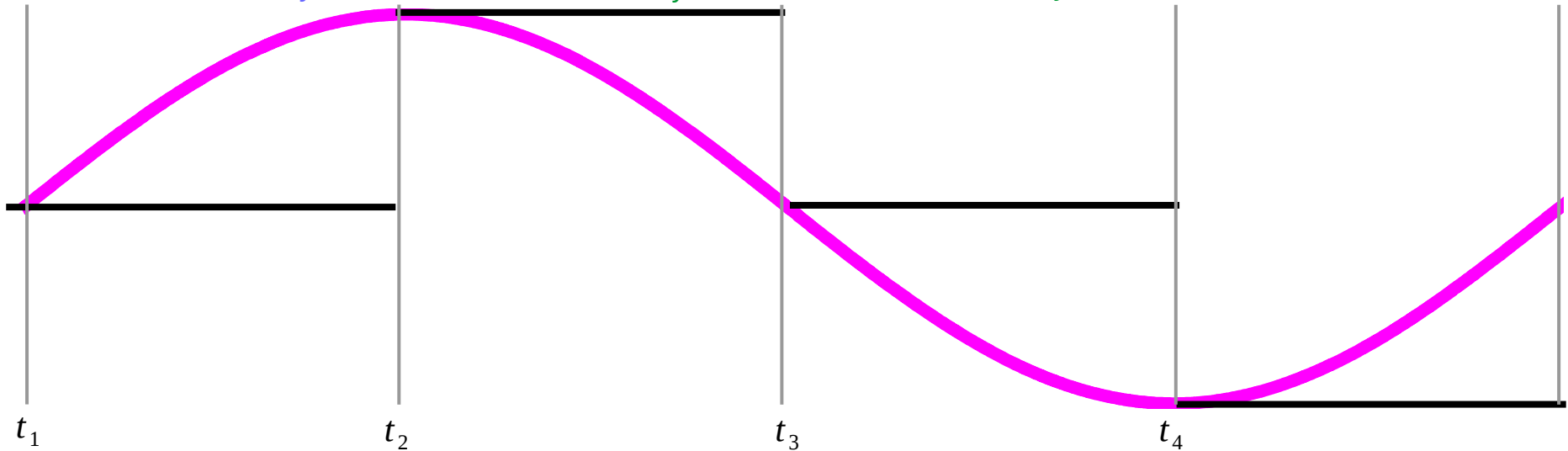


+ charging incrementally

- charging incrementally

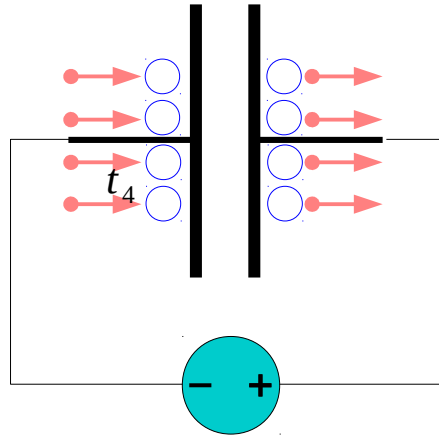
- charging incrementally

+ charging incrementally

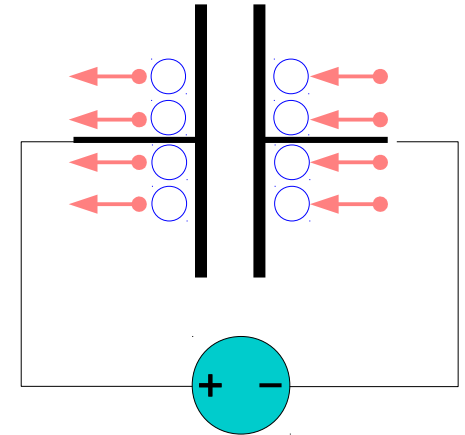


# Continuous Charging and Discharging Operations

Negatively Charging



Positively Charging

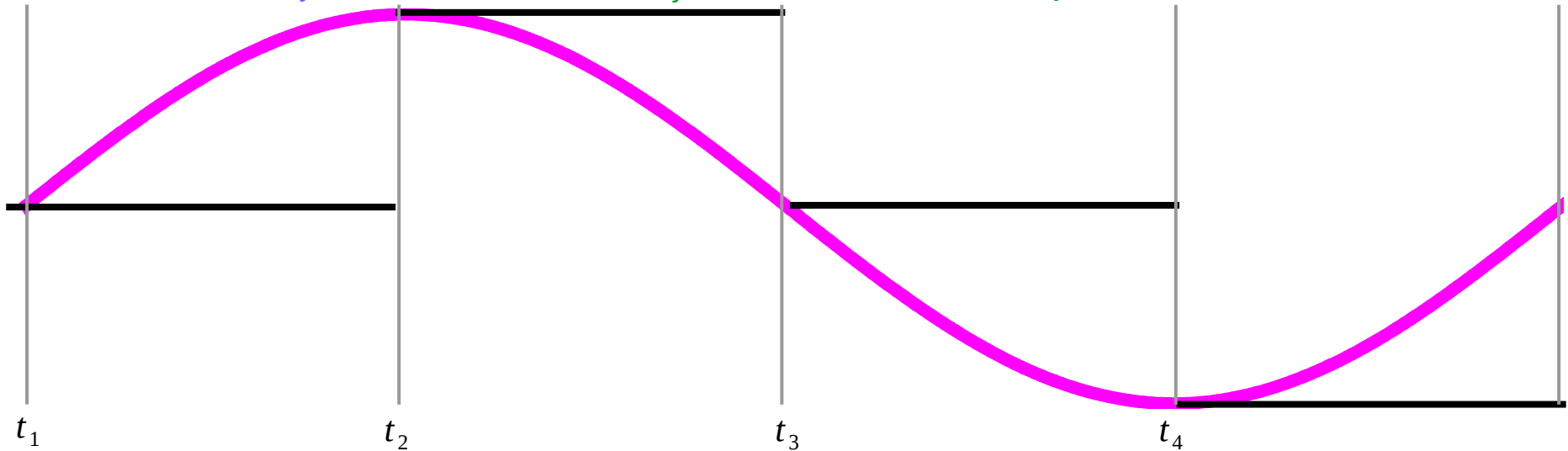


+ charging incrementally

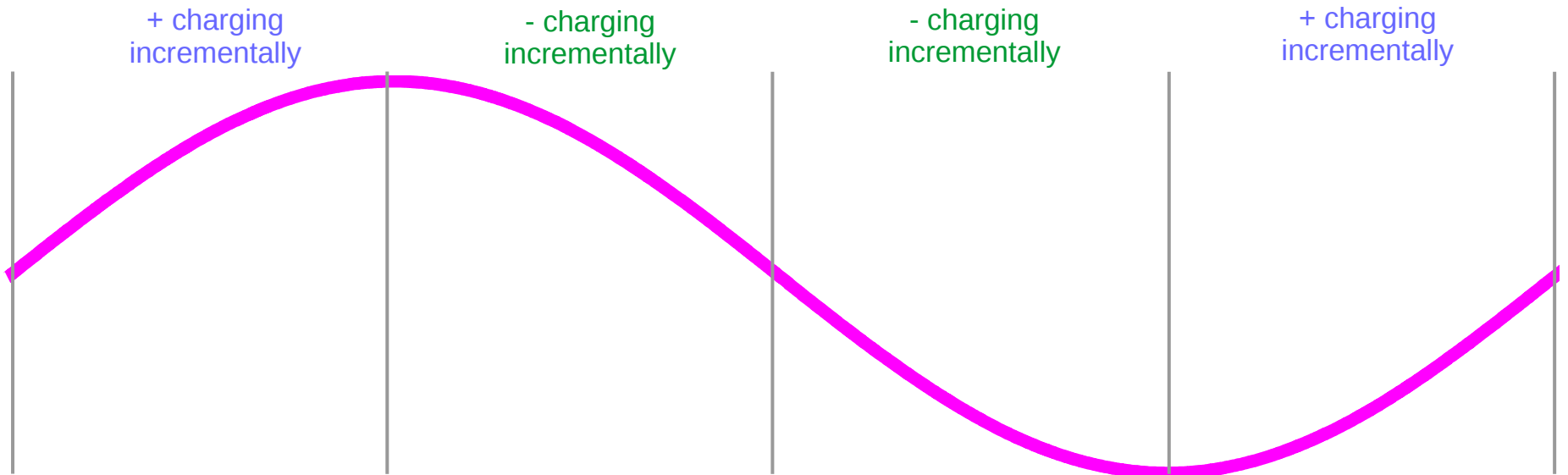
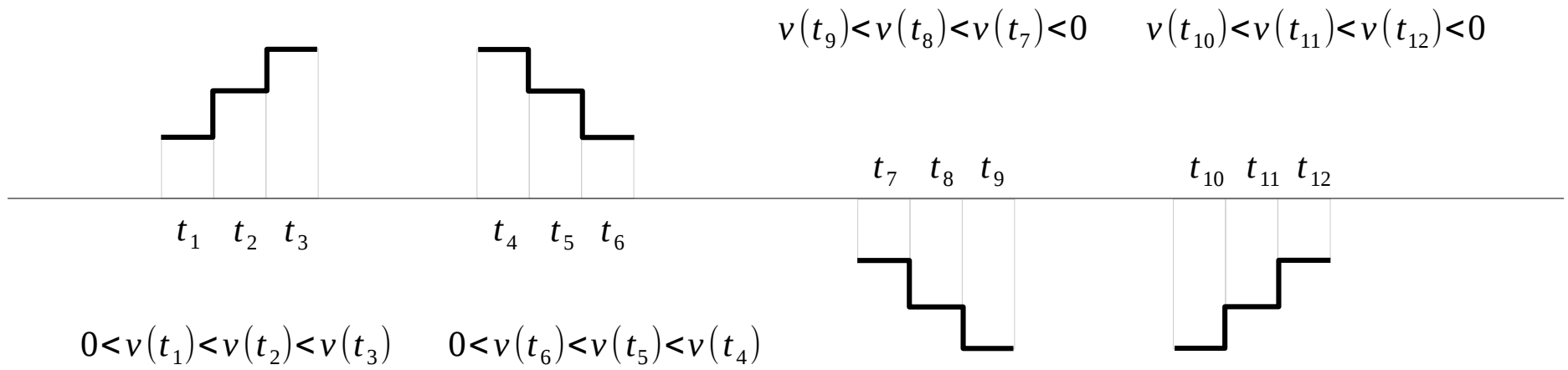
- charging incrementally

- charging incrementally

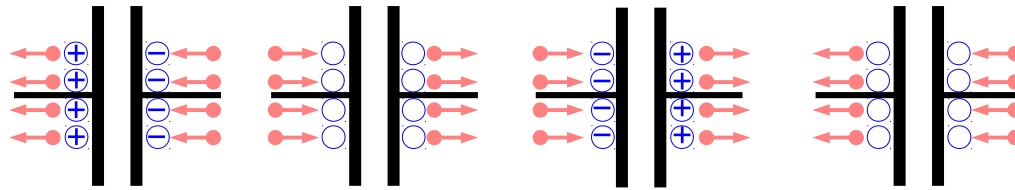
+ charging incrementally



# Incremental Charging

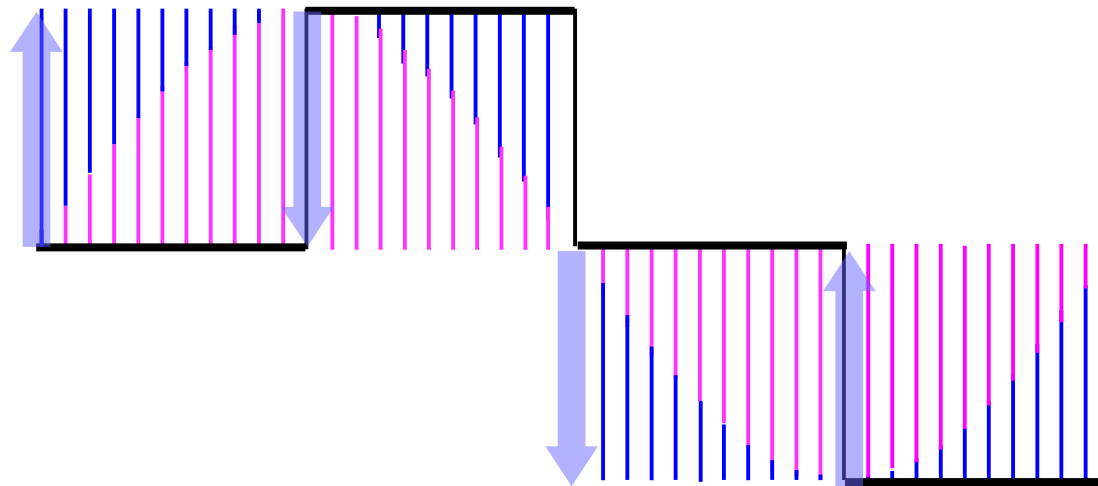


# Everchanging signal pairs



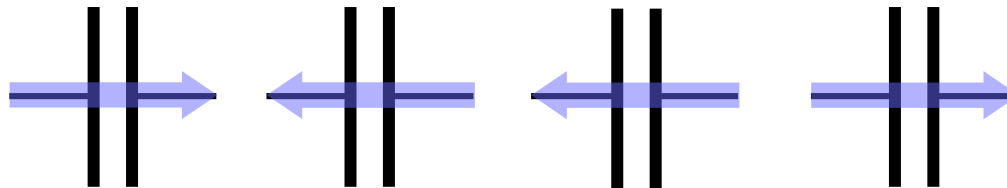
charge

discharge

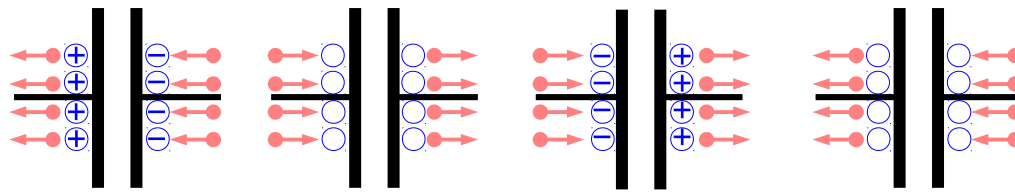


charge

discharge

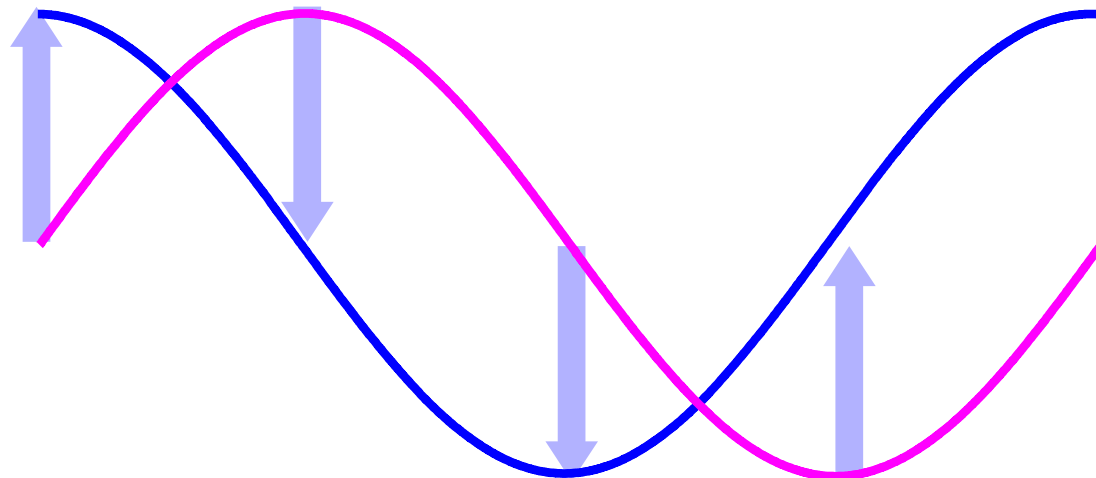


# Everchanging signal pairs



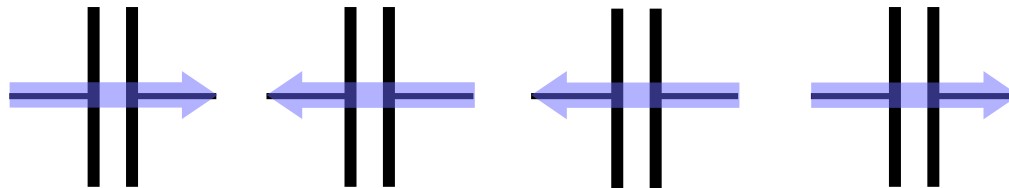
charge

discharge

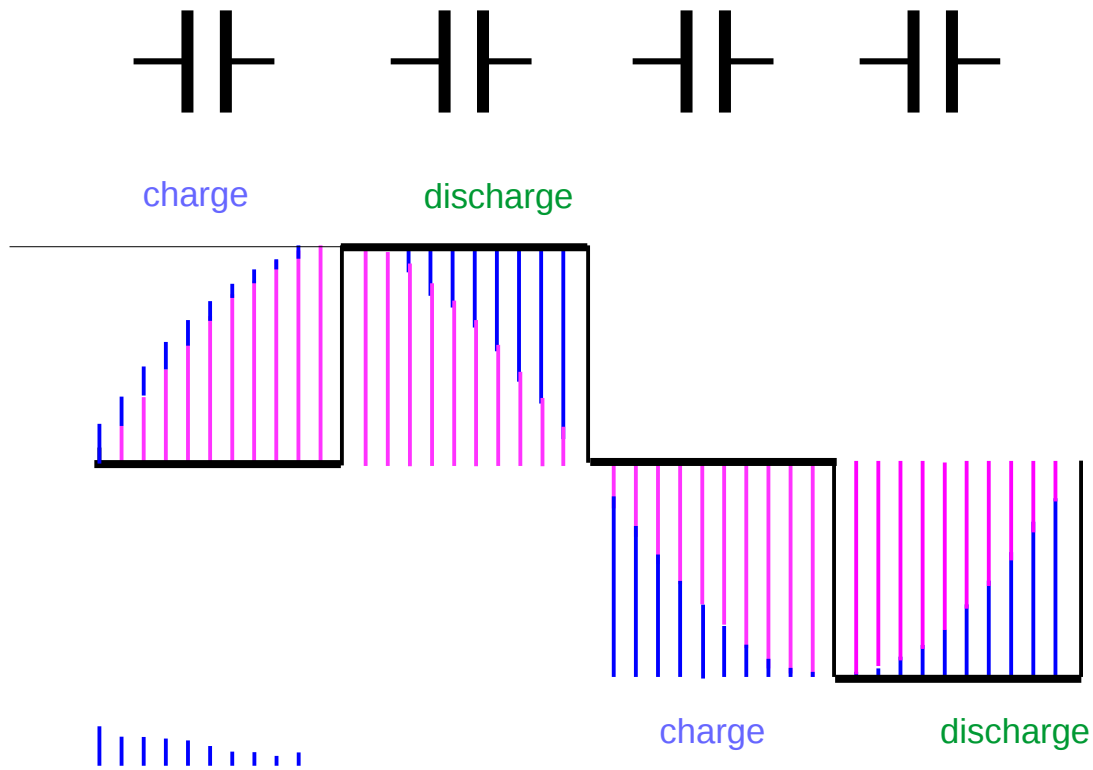


charge

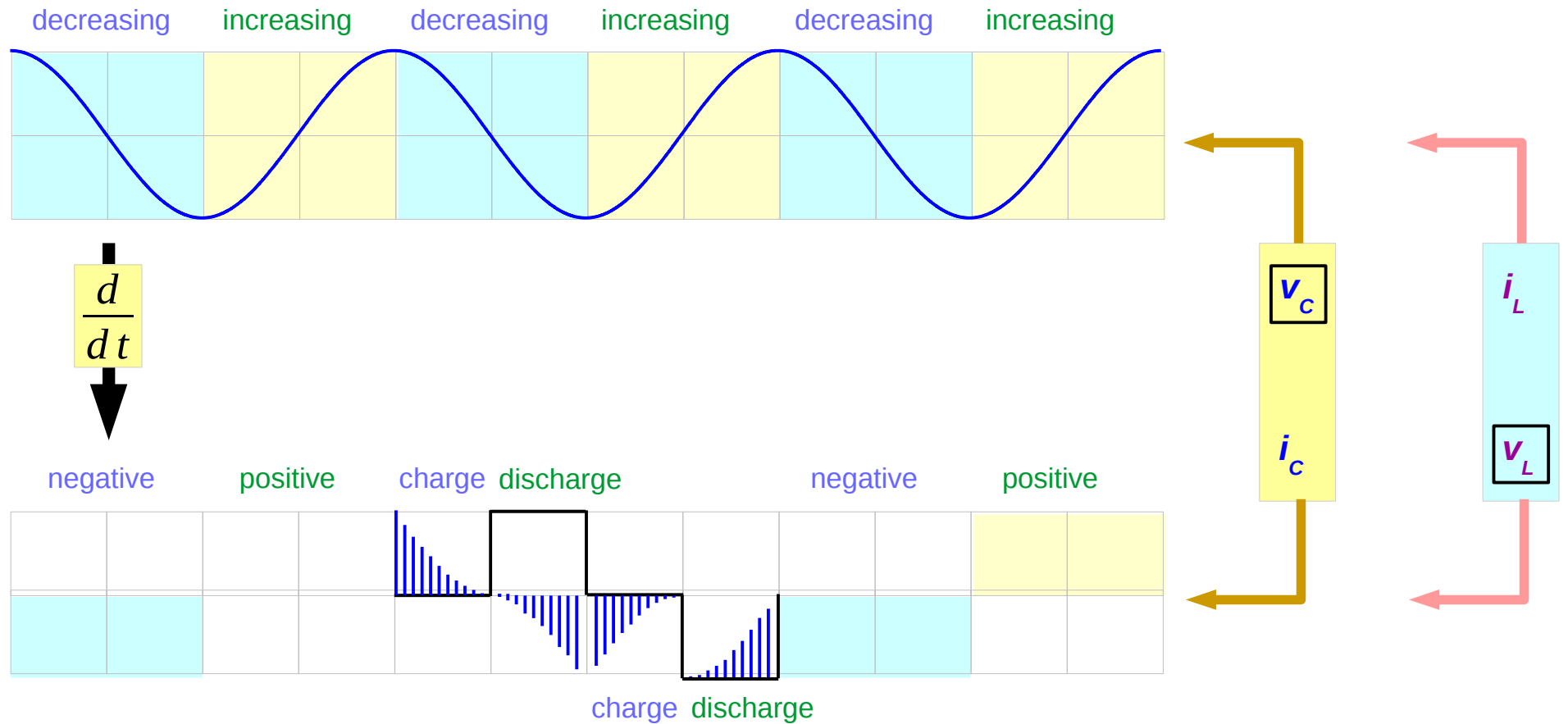
discharge



# Everchanging signal pairs

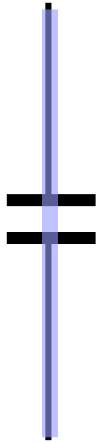


# Everchanging signal pairs



# I leads V by 90°

*Initial charge*

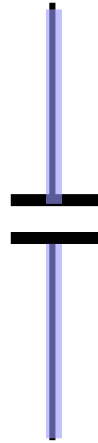


*SHORT*

*V = 0*

*I : peak*

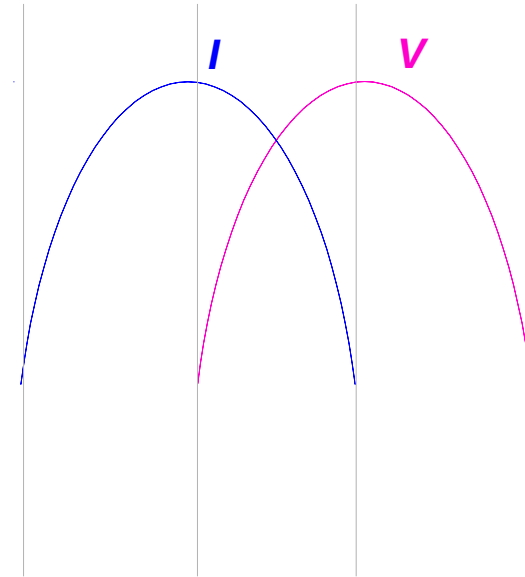
*Full charge*



*OPEN*

*I = 0*

*V : peak*





## References

[1] <http://en.wikipedia.org/>

[2] J.H. McClellan, et al., Signal Processing First, Pearson Prentice Hall, 2003