

AstroMars

The LaTeX code that creates this quiz is released to the Public Domain
Attribution for each question is documented in the Appendix

Wednesday 19th December, 2018



For more information visit:

<https://en.wikiversity.org/wiki/Quizbank>

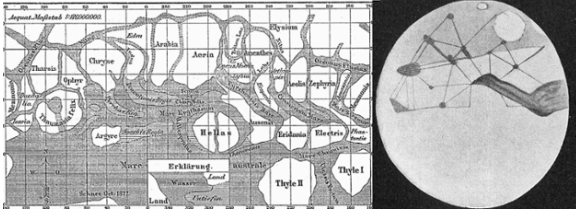
https://bitbucket.org/Guy_vandegrift/qbwiki/wiki/Home

<https://en.wikiversity.org/wiki/special:permalink/1863357>

Contents

| | |
|----------------------|----------|
| 1 Quiz | 2 |
| 2 Attribution | 4 |

1 Quiz

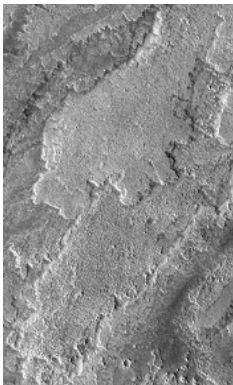


1. These drawings by Schiaparelli and Lowell were ultimately shown to be:¹⁾

- A. slip faults
- B. subduction zones
- C. rilles
- D. optical illusions**
- E. rift valleys

2. Antipodal to the Tharsis bulge is²⁾

- A. What Wikipedia contends IS an impact basin**
- B. What Wikipedia contends MIGHT BE an impact basin
- C. What Wikipedia contends IS an active volcano
- D. What Wikipedia contends MIGHT BE an active volcano
- E. the northern lowlands



3. The lobate feature shown in the figure is evidence of ³⁾

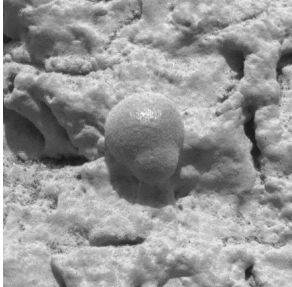
- A. dust storms
- B. plate tectonics
- C. water flow
- D. lava flow**
- E. wind erosion

4. The Martian dichotomy separates⁴⁾

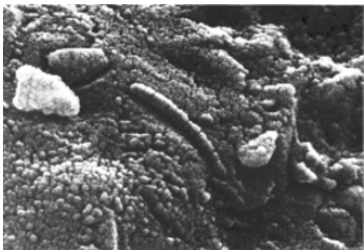
- A. Valles Marineris from Olympus Mons
- B. the rift valley from the volcanoes
- C. the highlands from the lowlands**
- D. the Tharsus buldge from Hellas basin
- E. the crust from the mantle

5. According to Wikipedia, ----- was formed due to swelling of the Tharsis bulge which caused the crust to collapse⁵⁾

- A. Valles Marineris
- B. Elysium
- C. the southern lowlands
- D. Hellas basin
- E. the northern lowlands



6. What is this hematite?⁶⁾
- A. **evidence that Mars once had oceans**
 - B. irrefutable evidence that Mars once had life
 - C. controversial evidence that Mars once had life
 - D. evidence that Mars once had active volcanoes
 - E. evidence that Mars now has active volcanoes
7. The polar ice caps on Mars are ___⁷⁾
- A. caused by geysers
 - B. actually clouds above the surface of Mars
 - C. a nearly equal mix of water and carbon dioxide
 - D. **mostly water**
 - E. mostly carbon dioxide
8. Liquid water cannot exist on Mars due to ___⁸⁾
- A. high pressure
 - B. **low pressure**
 - C. high temperature
 - D. low temperature
 - E. the solar wind



9. What is at the center of this magnified image of a Martian meteorite?⁹⁾
- A. evidence that Mars once had oceans
 - B. irrefutable evidence that Mars once had life
 - C. **controversial evidence that Mars once had life**
 - D. evidence that Mars once had active volcanoes
 - E. evidence that Mars now has active volcanoes

2 Attribution

Notes

- ¹ placed in Public Domain by Guy Vandegrift: <https://en.wikiversity.org/wiki/special:permalink/1863357>
- ² placed in Public Domain by Guy Vandegrift: <https://en.wikiversity.org/wiki/special:permalink/1863357>
- ³ placed in Public Domain by Guy Vandegrift: <https://en.wikiversity.org/wiki/special:permalink/1863357>
- ⁴ placed in Public Domain by Guy Vandegrift: <https://en.wikiversity.org/wiki/special:permalink/1863357>
- ⁵ placed in Public Domain by Guy Vandegrift: <https://en.wikiversity.org/wiki/special:permalink/1863357>
- ⁶ placed in Public Domain by Guy Vandegrift: <https://en.wikiversity.org/wiki/special:permalink/1863357>
- ⁷ placed in Public Domain by Guy Vandegrift: <https://en.wikiversity.org/wiki/special:permalink/1863357>
- ⁸ placed in Public Domain by Guy Vandegrift: <https://en.wikiversity.org/wiki/special:permalink/1863357>
- ⁹ placed in Public Domain by Guy Vandegrift: <https://en.wikiversity.org/wiki/special:permalink/1863357>